

# AVALON PARK 2ND

## AN ADDITION TO WICHITA

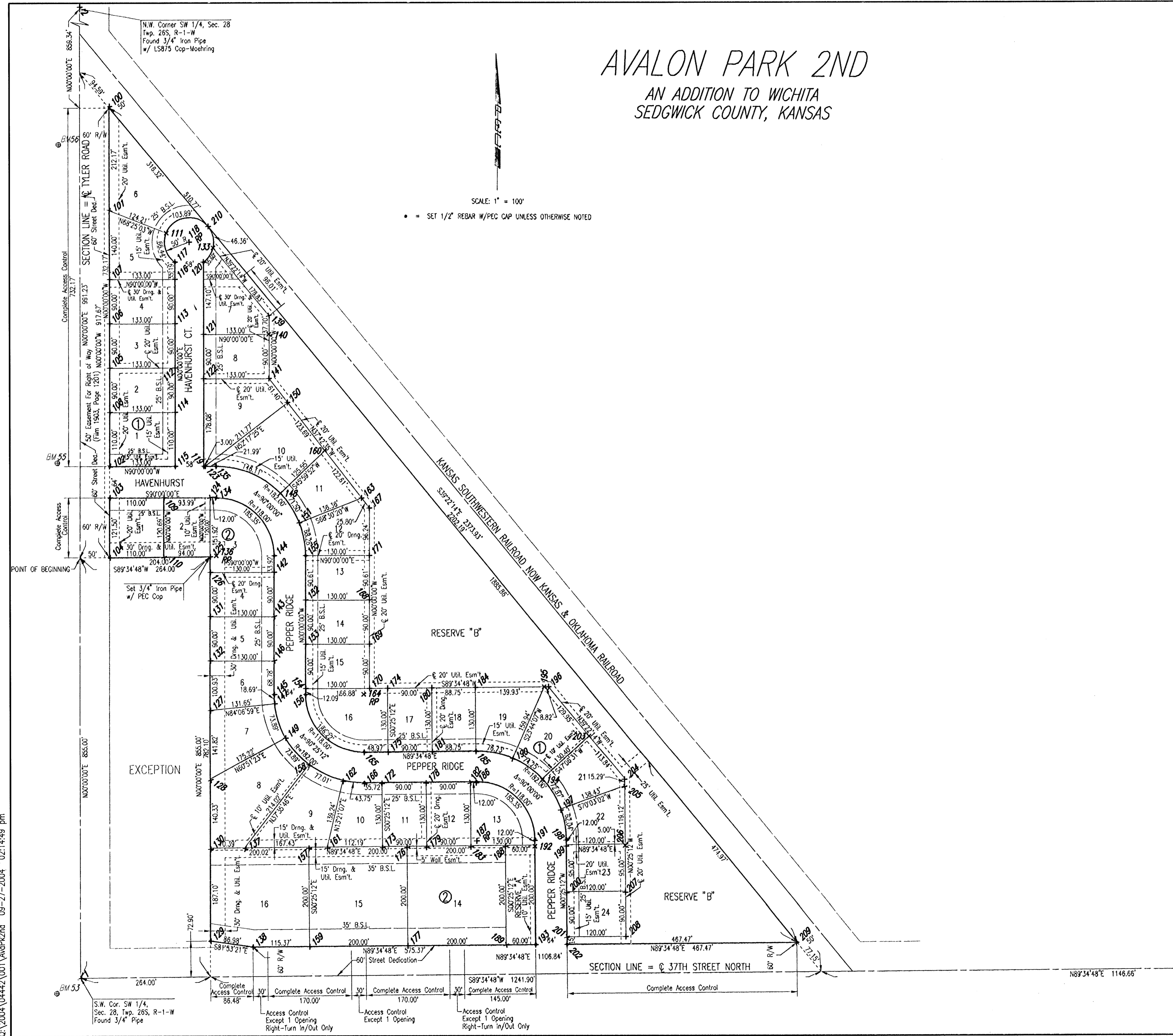
### SEDGWICK COUNTY, KANSAS

SCALE: 1" = 100'

• = SET 1/2" REBAR W/PEC CAP UNLESS OTHERWISE NOTED

PLAT COORDINATES		
PT#	NORTHING	EASTING
1	10000.000000	10000.000000
2	12632.440000	10000.000000
3	10019.444100	12652.487400
100	11773.104889	10060.000000
101	11560.935204	10060.000000
102	11040.935204	10060.000000
103	10976.935204	10060.000000
104	10855.439831	10060.000000
105	11240.935204	10060.000000
106	11330.935204	10060.000000
107	11420.935204	10060.000000
108	11150.935204	10060.000000
109	10976.935204	10170.000000
110	10856.246188	10170.000000
111	11515.242293	10175.505534
112	11240.935204	10193.000000
113	11330.935204	10193.000000
114	11150.935204	10193.000000
115	11040.935204	10193.000000
116	11420.935204	10193.000000
117	11456.121498	10193.000000
118	11496.852322	10222.000000
119	11040.935204	10251.000000
120	11456.121498	10251.000000
121	11309.018603	10251.000000
122	11219.018603	10251.000000
123	11040.935204	10254.000000
124	10976.935204	10263.992907
125	10856.935204	10263.992907
126	10825.018603	10263.992907
127	10544.085927	10263.992907
128	10402.268732	10263.992907
129	10074.839771	10263.992907
130	10261.942190	10263.992907
131	10735.018603	10263.992907
132	10645.018603	10263.992907
133	11484.959852	10270.565102
134	10976.935204	10275.992907
135	11040.935204	10275.992907
136	10858.935204	10275.992907
137	10262.458191	10334.383794
138	10062.568044	10350.102566
139	11346.716679	10384.000000
140	11309.018603	10384.000000
141	11219.018603	10384.000000
142	10825.018603	10393.992907
143	10735.018603	10393.992907
144	10858.935204	10393.992907
145	10576.237693	10393.992907
146	10645.018603	10393.992907
147	10557.581295	10394.951644
148	10985.368285	10406.907673
149	10487.603323	10417.033955
150	11170.467813	10421.537361
151	10925.621683	10445.335499
152	10768.325982	10457.992907
153	10678.325982	10457.992907

PLAT COORDINATES		
PT#	NORTHING	EASTING
154	10588.325982	10457.992907
155	10858.935204	10457.992907
156	10576.237693	10457.992907
157	10263.408384	10464.005373
158	10432.033506	10464.956190
159	10663.413758	10465.471437
160	11072.585073	10497.216043
161	10263.685511	10501.809973
162	10399.157102	10533.963580
163	10975.585220	10572.212115
164	10576.237693	10575.992907
165	10458.240864	10576.857885
166	10394.242583	10577.327025
167	10955.174357	10587.992907
168	10768.325982	10587.992907
169	10678.325982	10587.992907
170	10588.325982	10587.992907
171	10588.935204	10587.992907
172	10394.504439	10613.048402
173	10264.507932	10614.001343
174	10588.596322	10624.871608
175	10458.599815	10625.824549
176	10264.874448	10664.000000
177	10064.879821	10665.466064
178	10395.164168	10703.045984
179	10265.167661	10703.998925
180	10589.256051	10714.869190
181	10459.259543	10715.822131
182	10395.823897	10793.043566
183	10265.827389	10793.996507
184	10589.906648	10803.621162
185	10459.910141	10804.574103
186	10395.911860	10805.043243
187	10277.915031	10805.908221
188	10266.340512	10863.994627
189	10066.345885	10865.460690
190	10444.520602	10879.165191
191	10278.780008	10923.905051
192	10266.780331	10923.993015
193	10066.785704	10925.459078
194	10401.786077	10939.249752
195	10590.932347	10943.542875
196	10590.996984	10952.360482
197	10340.012008	10976.987049
198	10279.249149	10987.903331
199	10267.249471	10987.991295
200	10172.252024	10988.687675
201	10062.254442	10989.347404
202	10067.254845	10989.457359
203	10490.540405	11034.789737
204	10402.534291	11107.002812
205	10387.244888	11107.114891
206	10268.129109	11107.986071
207	10173.131662	11108.684451
208	10083.134080	11109.344180
209	10070.681564	11456.916841
210	11528.568922	10260.653037



DSNR: OPER: ILS SCALE: 1"=100.00  
 Q:\2004\04442\001\AvalonPark2nd 09-27-2004 02:14:49 pm

S.E. Corner SW 1/4,  
 Sec. 28, Twp. 26S, R-1-W  
 Found 5/8" Rebar

Revision No. _____ By _____ Date _____	
LATERAL 16, MAIN 19 OF THE SOUTHWEST INTERCEPTOR SEWER <b>PLAT</b> JAMES L. ARMOUR, P.E. - ACTING CITY ENGINEER CITY OF WICHITA PROJECT NO. 468-83186 <b>Professional Engineering Consultants, P.A.</b> 303 S. TOPEKA • WICHITA, KANSAS 67202 316-262-2691 • FAX 316-262-3003	
Designed by MDK Drawn by JCA	Job No. 35-04442-1-042 Date July 2004 SM. 3 of 17

