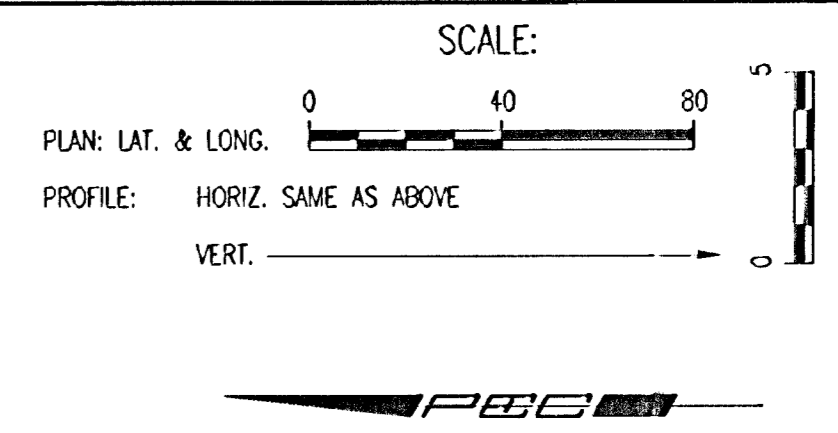
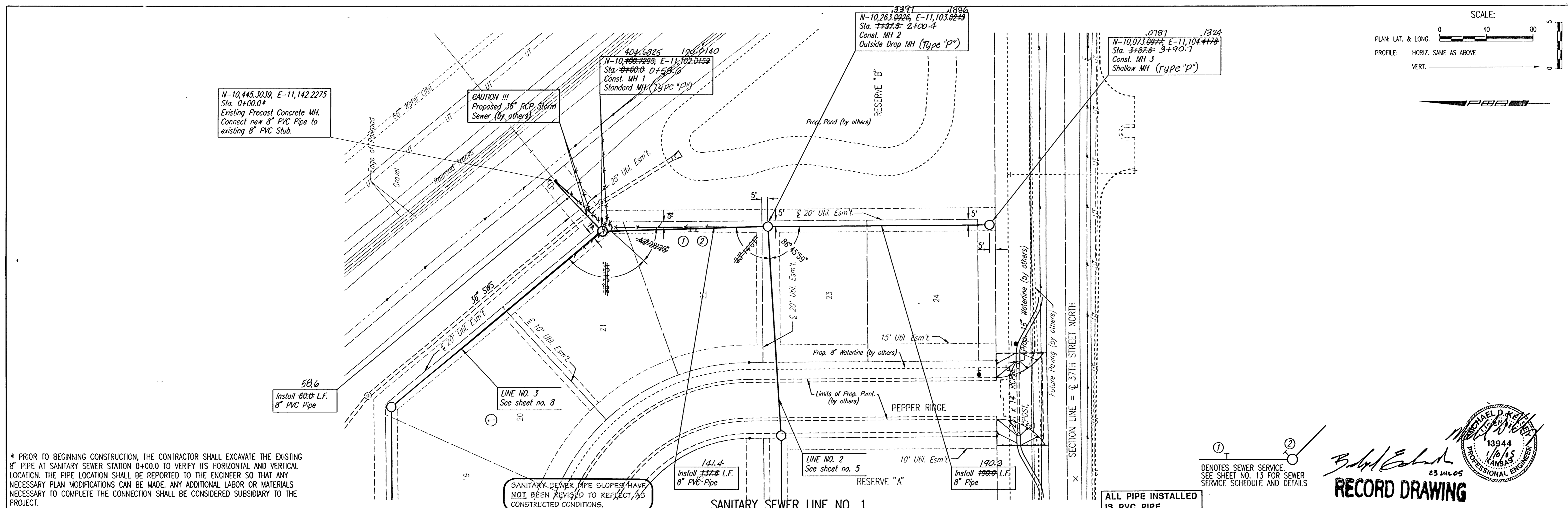


PLAN	CHECKED	DATE
	CHECKED	

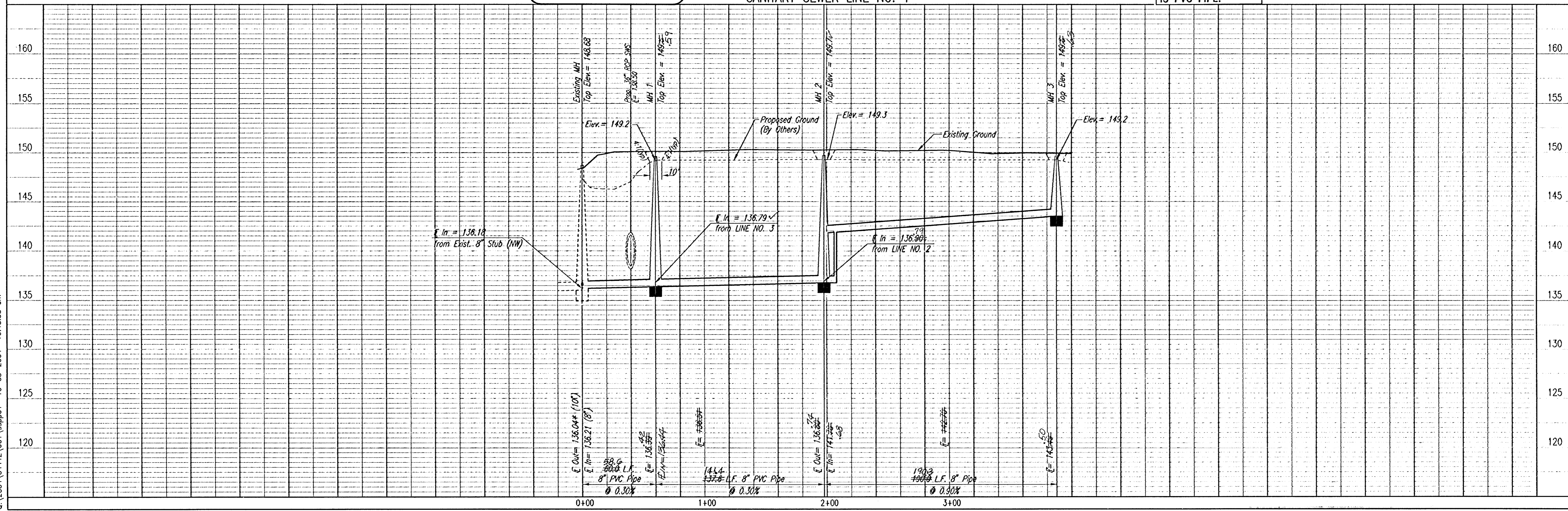
PROFILE	CHECKED	DATE
	CHECKED	

DSNR: OPER. ILS SCALE: 1"=40.00'
 C:\2004\04442\001\sspp01 10-05-2004 10:48:35 am



* PRIOR TO BEGINNING CONSTRUCTION, THE CONTRACTOR SHALL EXCAVATE THE EXISTING 8" PIPE AT SANITARY SEWER STATION 0+00.0 TO VERIFY ITS HORIZONTAL AND VERTICAL LOCATION. THE PIPE LOCATION SHALL BE REPORTED TO THE ENGINEER SO THAT ANY NECESSARY PLAN MODIFICATIONS CAN BE MADE. ANY ADDITIONAL LABOR OR MATERIALS NECESSARY TO COMPLETE THE CONNECTION SHALL BE CONSIDERED SUBSIDIARY TO THE PROJECT.

① ②
 DENOTES SEWER SERVICE. SEE SHEET NO. 13 FOR SEWER SERVICE SCHEDULE AND DETAILS.
RECORD DRAWING
 23 JUL 05
 James L. Amour, P.E. - ACTING CITY ENGINEER
 CITY OF WICHITA PROJECT NO. 443-83748



LATERAL 16 MAIN 19 OF THE SOUTHWEST INTERCEPTOR SEWER
SANITARY SEWER LINE NO. 1
 JAMES L. AMOUR, P.E. - ACTING CITY ENGINEER
 CITY OF WICHITA PROJECT NO. 443-83748

Professional Engineering Consultants, P.A.
 303 S. TOPEKA • WICHITA, KANSAS 67202
 316-262-2691 • FAX 316-262-3003

Job No. 35-04442-001-042
 Date July 2004

Designed By MOK
 Drawn By JCA

Sheet 4 of 17