

DATE	
BY	
CHECKED	
CHECKED	
PLAN	

DATE	
BY	
CHECKED	
CHECKED	
PROFILE	

DSNR: OPER: ILS SCALE: 1"=40.00
 G:\2004\04442\001\sspp05 09-27-2004 02:28:20 pm

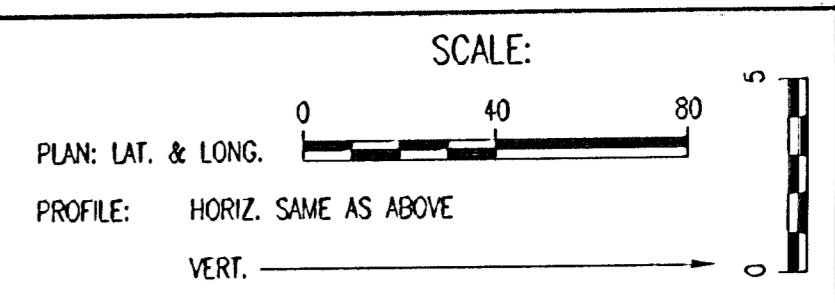
404.6825 100.0140
 N-10,585.9844 E-11,102.0158
 LINE NO. 1, Sta. 0+00.0 D+58.6
 LINE NO. 3, Sta. 0+00.0
 MH 1

LINE NO. 1
 See sheet no. 4

6748 949.8391
 N-10,585.9844 E-10,950.0059
 Sta. 2+39.8 2+35.2
 Const. MH 12
 Standard MH (Type "P")

CAUTION !!!
 Proposed 24" RCP Storm
 Sewer (by others)

9076 3840
 N-10,584.0044 E-10,582.9929
 Sta. 6+06.6 6+02.7
 Const. MH 13
 Standard MH (Type "P")



50' Permanent Pipeline Right of Way
 (Condemnation Case # A 45682)

Install 235.2 L.F.
 8" Pipe

SANITARY SEWER PIPE SLOPES HAVE
 NOT BEEN REVISED TO REFLECT AS
 CONSTRUCTED CONDITIONS.

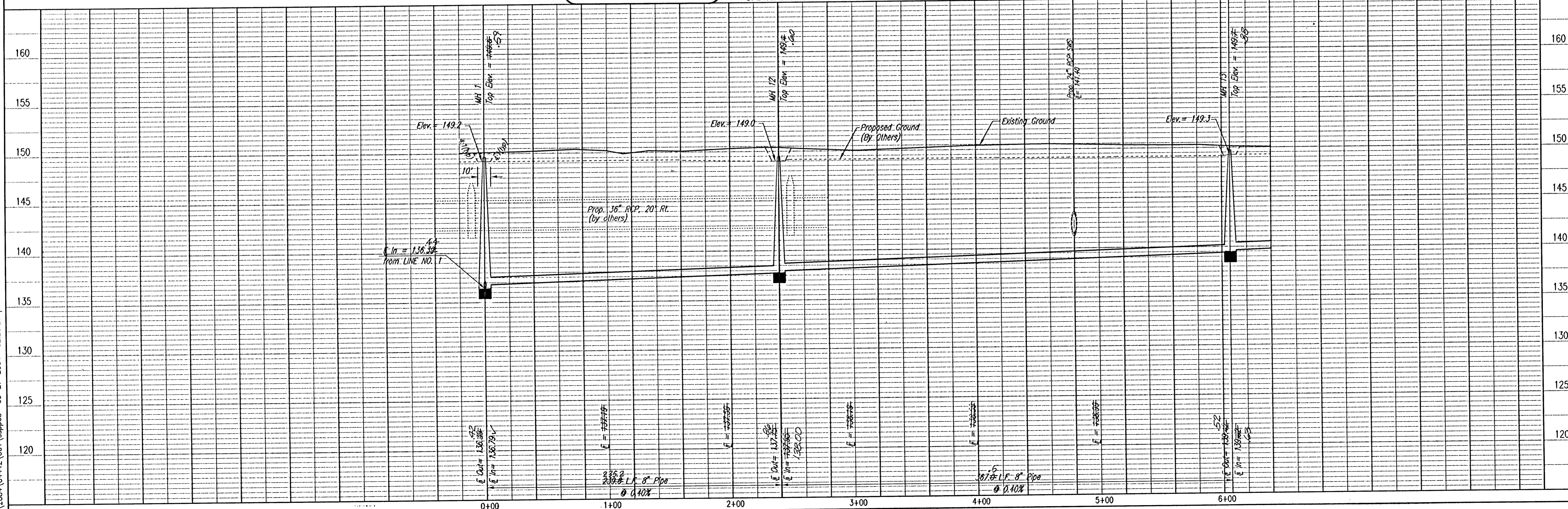
SANITARY SEWER LINE NO. 3

Install 367.8 L.F.
 8" Pipe

ALL PIPE INSTALLED
 IS PVC PIPE.

23 JUL 05
 DENOTES SEWER SERVICE.
 SEE SHEET NO. 13 FOR SEWER
 SERVICE SCHEDULE AND DETAILS

James L. Armour
 13944
 1/10/05
 KANSAS
 PROFESSIONAL ENGINEER
RECORD DRAWING



LATERAL 16, MAIN 19 OF THE
 SOUTHWEST INTERCEPTOR SEWER
SANITARY SEWER LINE NO. 3

Professional Engineering Consultants, P.A.
 303 S. TOPKA - WICHITA, KANSAS 67202
 316-265-2691 • FAX 316-265-3003

Designed By: MDK
 Drawn By: JCA
 Job No.: 35-04442-001-042
 Date: July 2004

JAMES L. ARMOUR, P.E. - ACTING CITY ENGINEER
 CITY OF WICHITA PROJECT NO. 488-83748