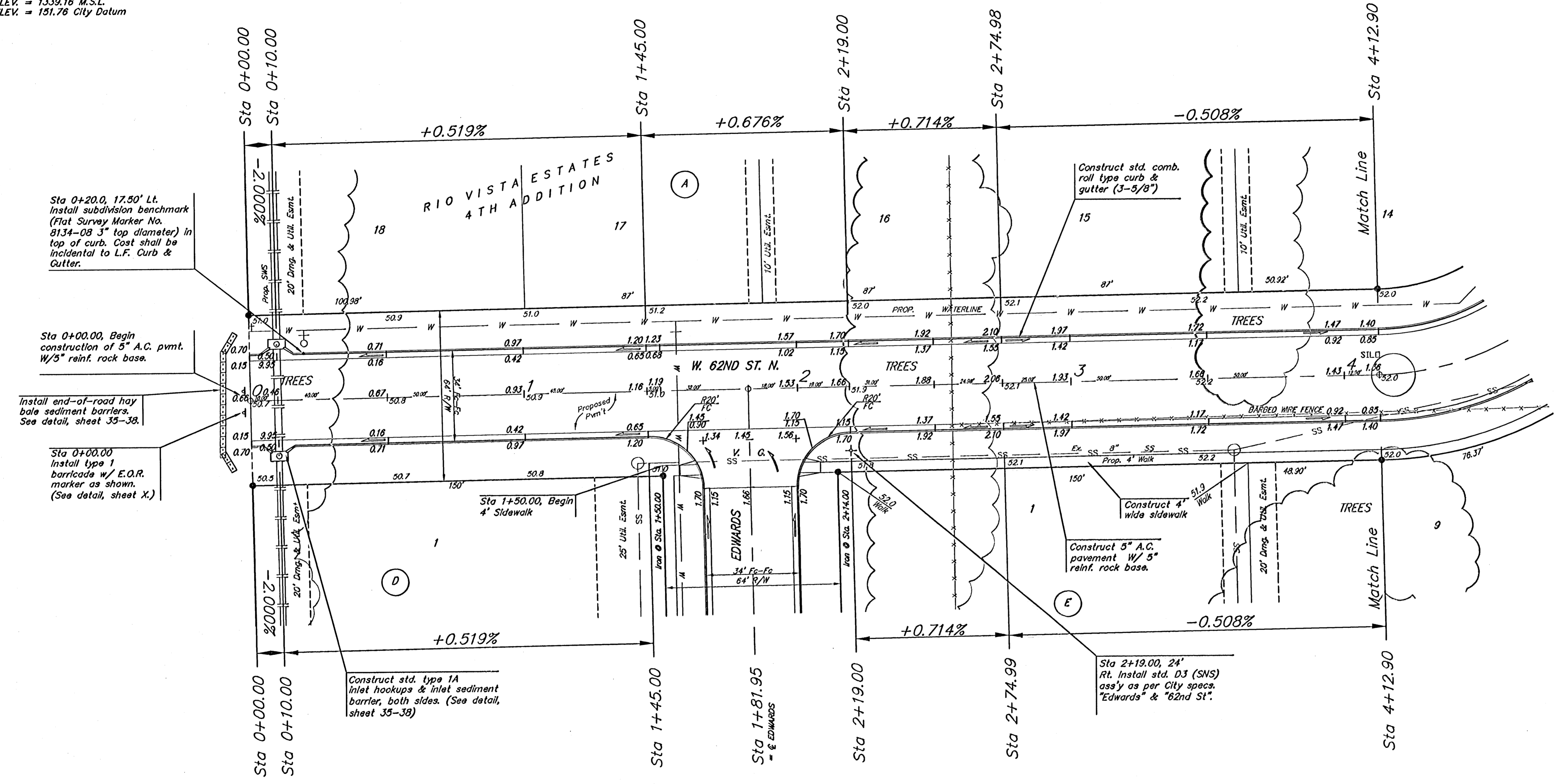
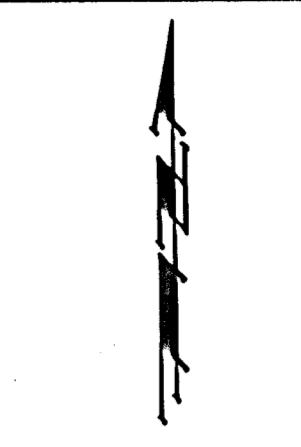


BENCHMARK:
 R.R. SPIKE IN HLP, 150' E. & 30'
 S. OF THE S.W. COR., S.E. 1/4,
 SEC. 12-26-1W
 ELEV. = 1338.96 M.S.L.
 ELEV. = 151.56 City Datum

"0" IN OPEN, TOP FLANGE OF FIRE
 HYDRANT AT THE S.W. CORNER
 OF 61ST. ST. N. & MERIDIAN AVE.
 ELEV. = 1339.16 M.S.L.
 ELEV. = 151.76 City Datum



Sta 0+20.0, 17.50' Lt.
 Install subdivision benchmark
 (Flat Survey Marker No.
 8134-08 3" top diameter) in
 top of curb. Cost shall be
 incidental to L.F. Curb &
 Gutter.

Sta 0+00.00, Begin
 construction of 5" A.C. pvmt.
 w/ 5" reinf. rock base.

Install end-of-road hay
 bale sediment barriers.
 See detail, sheet 35-38.

Sta 0+00.00
 Install type 1
 barricade w/ E.O.R.
 marker as shown.
 (See detail, sheet X.)

Construct std. type 1A
 inlet hookups & inlet sediment
 barrier, both sides. (See detail,
 sheet 35-38)

Sta 2+19.00, 24'
 Rt. Install std. D3 (SNS)
 ass'y as per City specs.
 "Edwards" & "62nd St."

Subdivision Bench Marks

Street & Station	Location Description	Elevation
Rio Vista 0+37.0, 17.50' Lt.	Adjacent to Fire Hydrant at the Southwest corner of Lot 4, Block C	
W 62nd St. North 0+20.0, 17.50' Lt.	Adjacent to Fire Hydrant at the Southwest corner of Lot 18, Block A	
Richmond 15+13.62, 17.50' Lt.	Adjacent to Fire Hydrant at the Northeast corner of Lot 1, Block A	
Richmond Ct. 0+37.71, 14.50' Lt.	Adjacent to Fire Hydrant at the Northeast corner of Lot 13, Block A	
Richmond 8+32.84, 17.50' Lt.	Adjacent to Fire Hydrant at the Northeast corner of Lot 9, Block C	
Rio Vista Ct. 0+36.77, 14.50' Lt.	Adjacent to Fire Hydrant at the Northwest corner of Lot 1, Block E	

Adjust water valve
 boxes as needed
 to grade.
 Incidental to 'Site
 Clearing and
 Restoration'.

Contractor to remove
 existing trees, fence, etc.
 as needed to complete
 paving project. Removal
 shall be incidental to bid
 item 'Site Clearing and
 Restoration'.

NOTE:
 ROLL TYPE CURB & GUTTER TO
 BE CONSTRUCTED ON THE
 PAVEMENT SHOWN ON THIS SHEET.
 TOP OF CURB ELEVATIONS ARE
 GIVEN FOR FULL HEIGHT CURB.

		Rio Vista Estates 4th Addition	
		W. 62nd St. N.	
PROJECT NUMBER 472-84056		DATE 7/05	
REVISIONS		DRAWN JWH	
		APPROVED	
		SCALE Noted	
		SHEET 8 OF 51	
Rio Vista\url.dwg		05-03-B204	