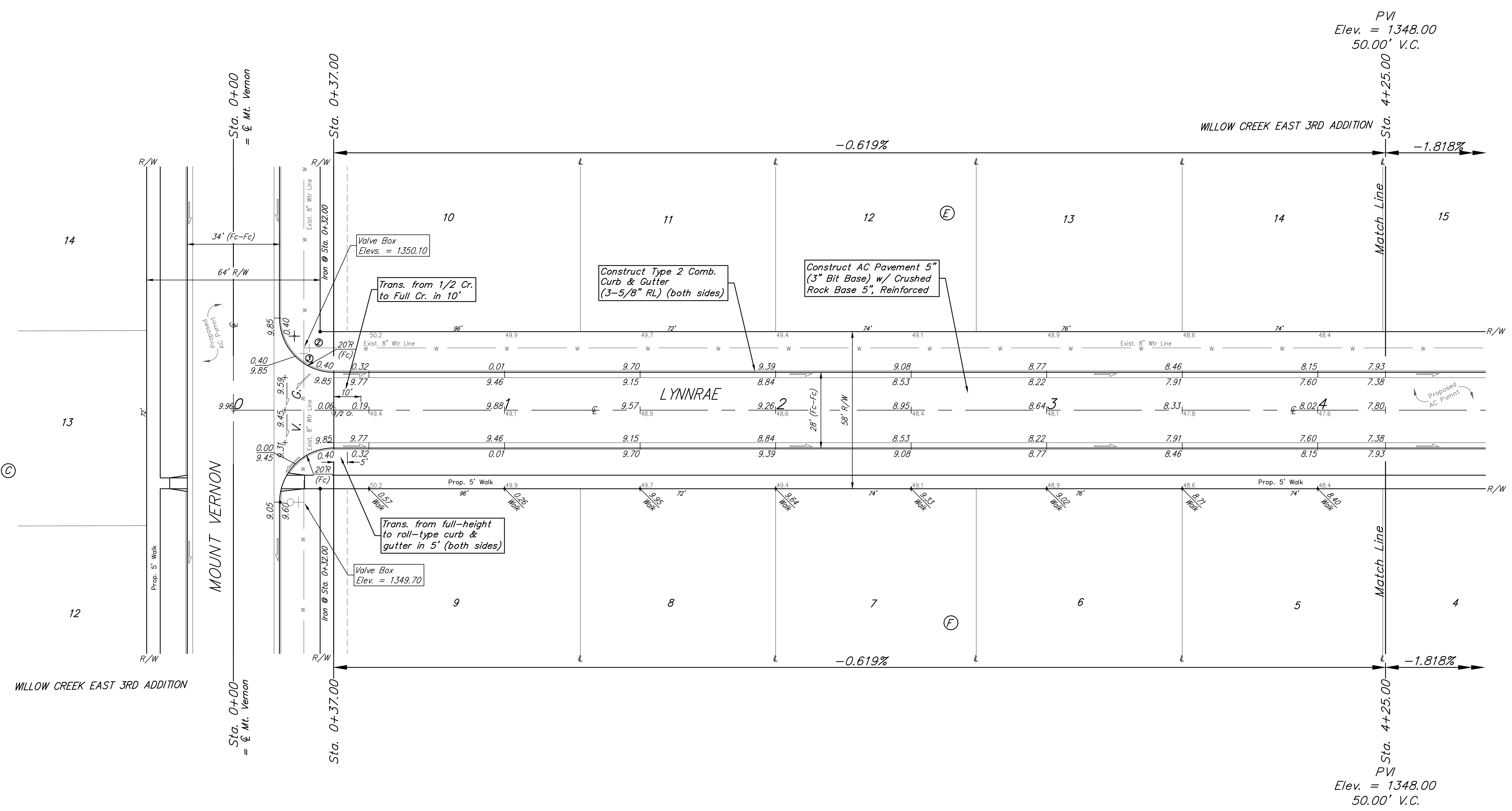
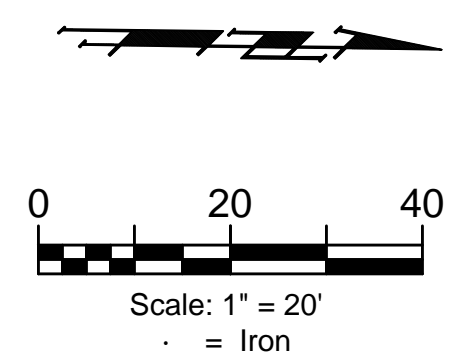


BENCHMARKS:
 Brass benchmark disc in top of curb, east of wheelchair ramp NE cor. of Funston and Lynnrae Elev. = 1343.69 NAVD88

Brass benchmark disc in top of curb, north of wheelchair ramp NW cor. of Funston and Herrington Elev. = 1344.71 NAVD88



Roll type curb & gutter to be constructed on the pavement on this sheet. Top of curb elevation are given for full height curb.



BAUGHMAN COMPANY
 315 Ellis St.
 Wichita, KS 67211
 316-262-7271
 BaughmanCo.com

WILLOW CREEK EAST 3RD ADDITION - PHASE III
LYNNRAE
 Sta. 0+37.00 to Sta. 4+25.00
 STREET IMPROVEMENTS

PROJECT NUMBER:
 472-85508
 DESIGN: DMV DRAWN: JAK
 DATE: Feb. 20, 2024
 SHEET 11 OF 23

File: E:\Projects\Willow Creek East 3rd Addition_17-04-P283\Engineering\Phase 3\STR_22-01-E099\STR_22-01-E099.dwg