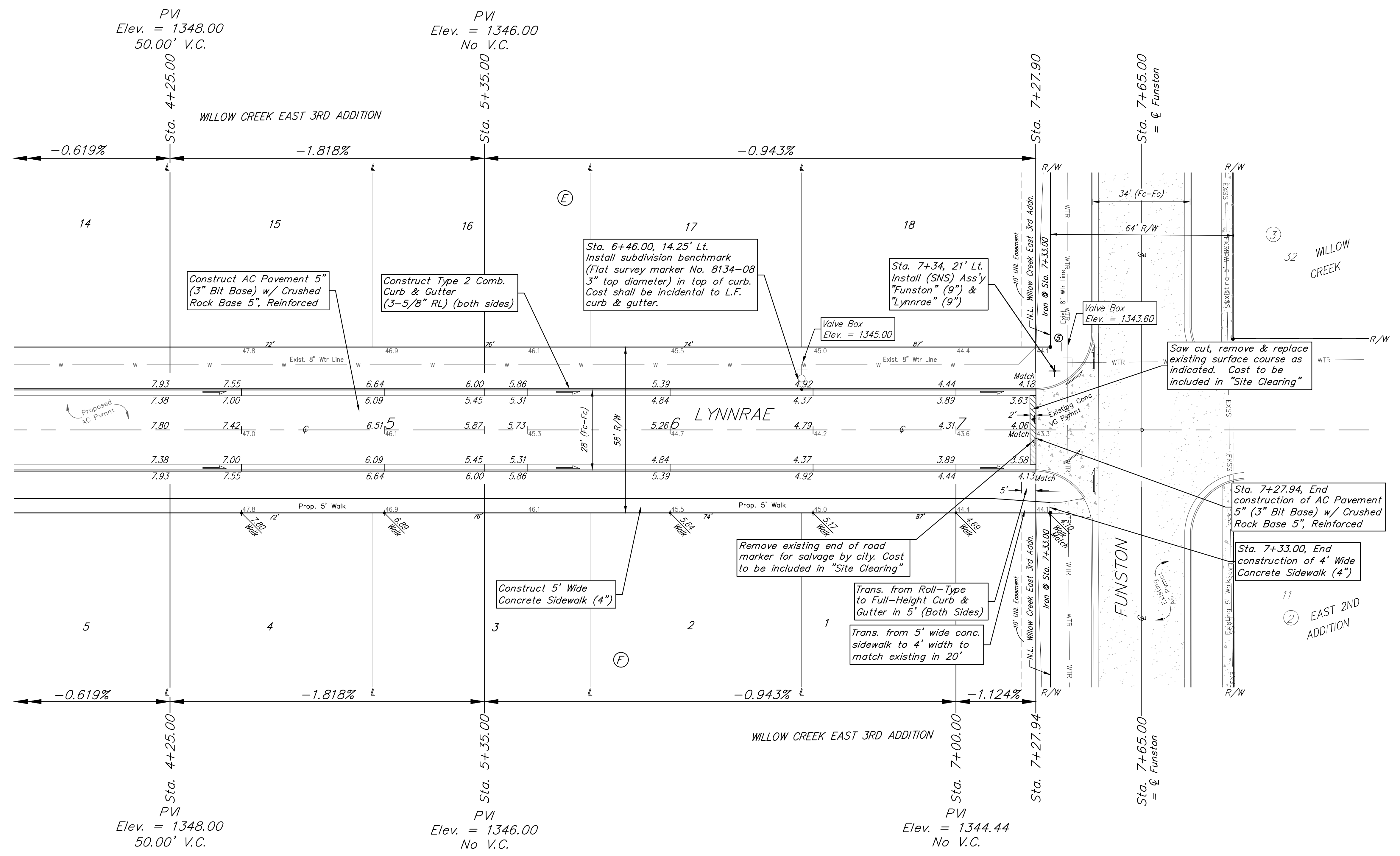
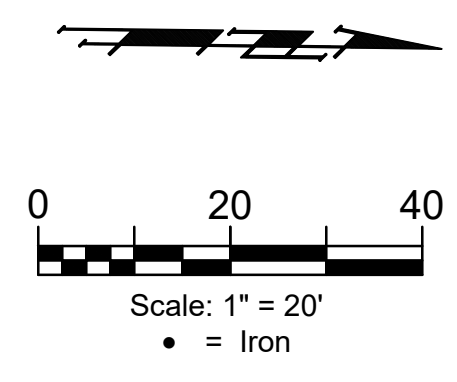


BENCHMARKS:
 Brass benchmark disc in top of curb, east of wheelchair ramp NE cor. of Funston and Lynnrae Elev. = 1343.69 NAVD88

Brass benchmark disc in top of curb, north of wheelchair ramp NW cor. of Funston and Herrington Elev. = 1344.71 NAVD88



SUBDIVISION BENCHMARKS

Street & Station	Location Description	Elevation
Mount Vernon 3+32.00, 17.25' Lt.	Adjacent to Fire Hydrant at the South End of the East Return Lynnrae & Mount Vernon, South of the SW Cor., Lot 9, Blk F, Willow Creek East 3rd Addn.	
Herrington 8+35.45, 17.25' Lt.	Adjacent to Fire Hydrant East of the NE Cor., Lot 12, Blk F, Willow Creek East 3rd Addn.	
Herrington 12+67.49, 17.25' Lt.	Adjacent to Fire Hydrant East of the NE Cor., Lot 17, Blk F, Willow Creek East 3rd Addn.	
Lynnrae 11+83.71, 17.25' Rt.	Adjacent to Fire Hydrant East of the NE Cor., Lot 18, Blk E, Willow Creek East 3rd Addn.	

VALVE LOCATION TABLE

VALVE NUMBER	STREET	BASELINE STATION	OFFSET DISTANCE	OFFSET DIRECTION
1	Mt. Vernon	0+43.81	26'	Lt.
2	Mt. Vernon	2+75.00	28'	Lt.
3	Mt. Vernon	2+77.00	26'	Lt.
4	Herrington	12+80.78	32'	Lt.
5	Lynnrae	7+33.00	29'	Lt.

Roll type curb & gutter to be constructed on the pavement on this sheet.
 Top of curb elevation are given for full height curb.

BAUGHMAN COMPANY
 315 Ellis St.
 Wichita, KS 67211
 316-262-7271
 BaughmanCo.com

WILLOW CREEK EAST 3RD ADDITION - PHASE III

LYNNRAE

Sta. 4+25.00 to Sta. 7+27.94
 STREET IMPROVEMENTS

PROJECT NUMBER:
 472-85508

DESIGN: DMV DRAWN: JAK
 DATE: Feb. 20, 2024

SHEET OF
12 23

File: E:\Projects\Willow Creek East 3rd Addition - 17-04-P283\Engineering\Phase 3\STR_22-01-E099\STR_22-01-E099.dwg