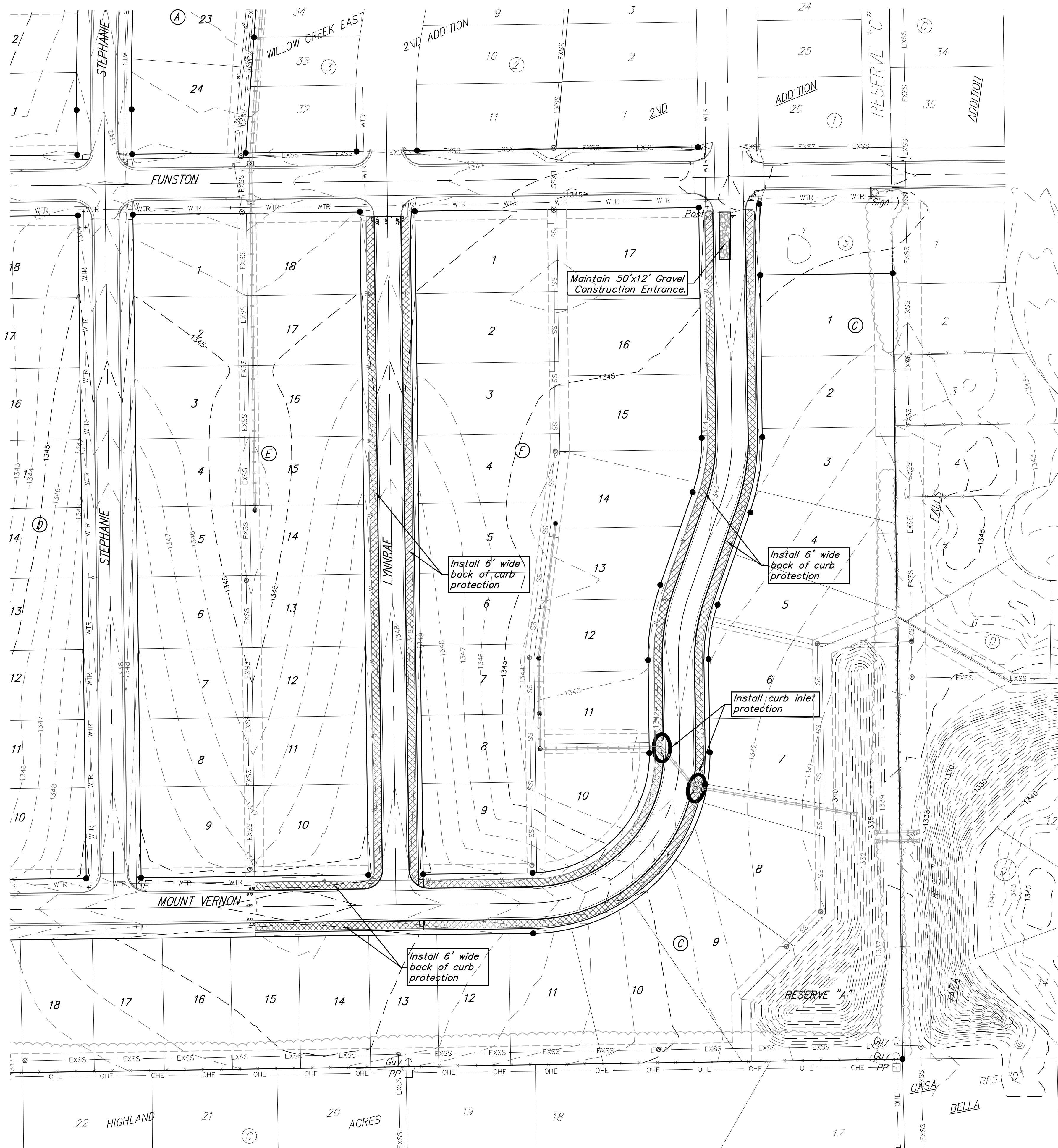


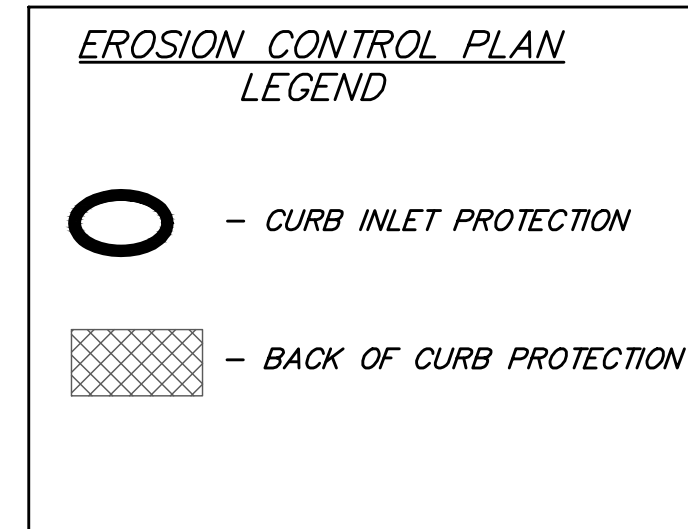
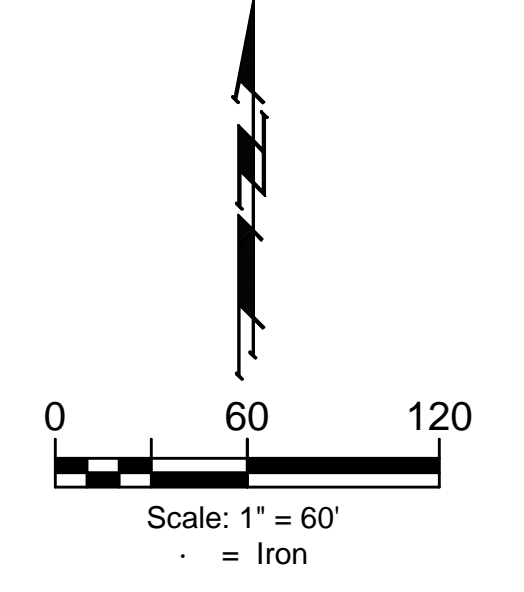
BENCHMARKS:
 Brass benchmark disc in top of curb, east of wheelchair ramp NE cor. of Funston and Lynnrae Elev. = 1343.69 NAVD88

Brass benchmark disc in top of curb, north of wheelchair ramp NW cor. of Funston and Herrington Elev. = 1344.71 NAVD88

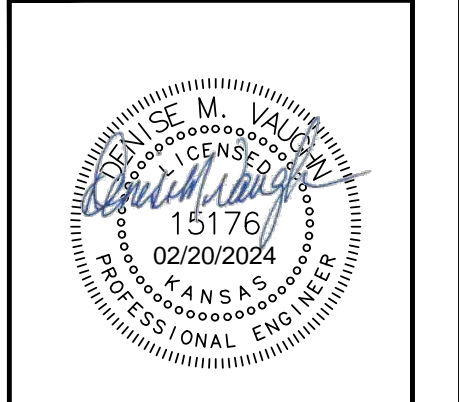


EROSION CONTROL MEASURE	INSTALL	MAINTAIN
CONSTRUCTION ENTRANCE (EA)	0	1
CURB INLET BARRIER (EA)	2	0
BACK OF CURB PROTECTION (LF)	3,620	0
MAINTAIN EROSION CONTROL BMP's (LS)	0	1

* ALL EXISTING BMPs INCLUDING CONSTRUCTION ENTRANCE, SEDIMENT BARRIERS, SILT FENCE, CUT-OFF TRENCH, AND EROSION CONTROL MAT SHALL BE MAINTAINED AND REPAIRED IF NECESSARY.



- NOTES:**
- Contractor shall make sure all erosion control is in place before project is accepted. This plan represents the minimum standard. Any additional erosion control measures shall be installed by the Contractor as needed.
 - Removal of Gravel Construction Entrance for pavement construction shall be included in bid item "Site Clearing"
 - All areas disturbed during construction shall be seeded, mulched, and fertilized as per Cover Sheet General Notes.



BAUGHMAN COMPANY

315 Ellis St.
 Wichita, KS 67211
 316-262-7271
 BaughmanCo.com

WILLOW CREEK EAST 3RD ADDITION - PHASE III

EROSION CONTROL

STREET IMPROVEMENTS

PROJECT NUMBER:
472-85508

DESIGN: DMV DRAWN: JAK

DATE: Feb. 20, 2024

SHEET 13 OF 23

File: E:\Projects\Willow Creek East 3rd Addition_17-04-P283\Engineering\Phase 3\STR_22-01-E099.dwg