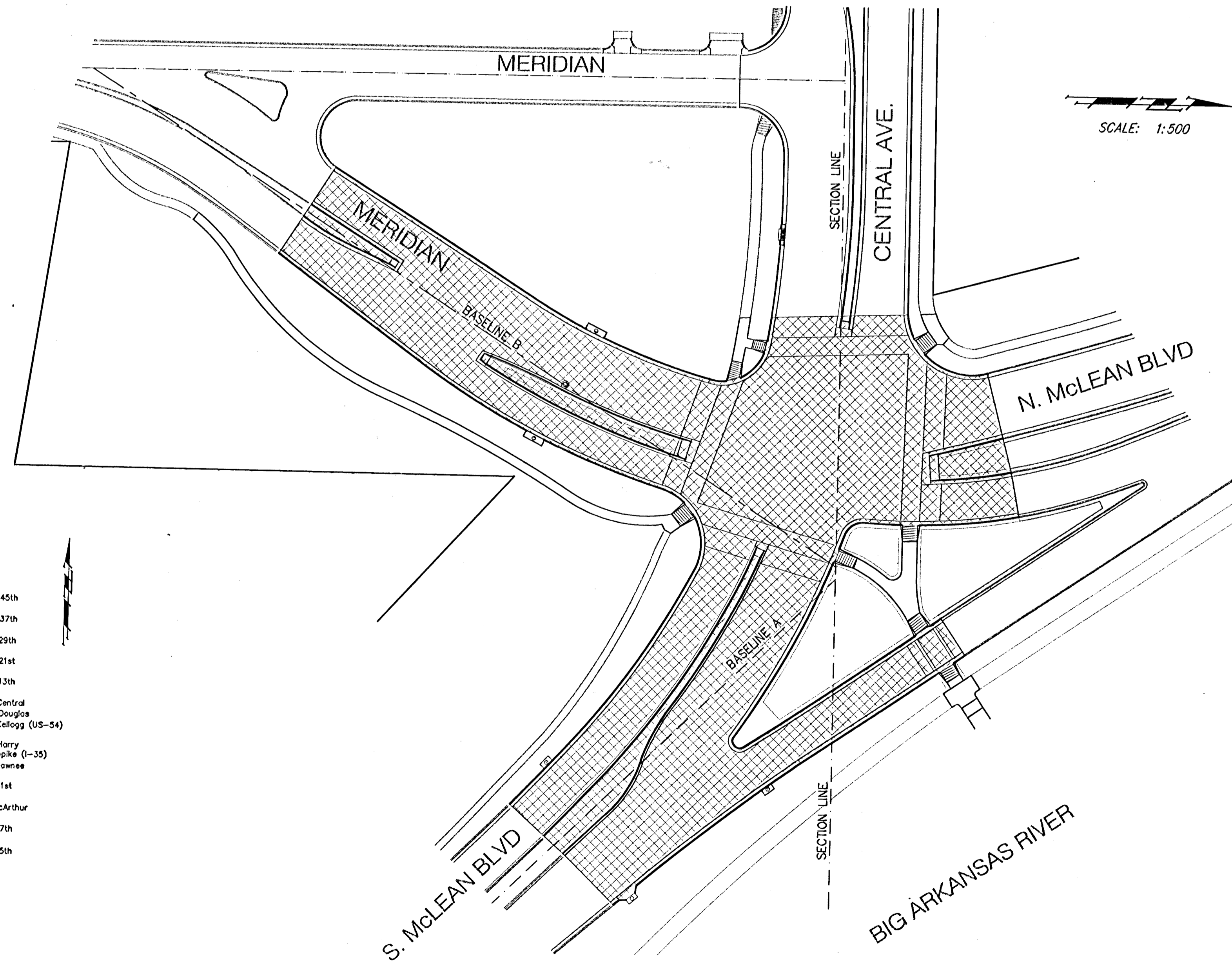


CENTRAL AND McLEAN INTERSECTION IMPROVEMENTS

Project No. **472-76-245-82910** O.C.A. **706663**

CITY OF WICHITA, KANSAS
Michael E. Lindebak, P.E. City Engineer

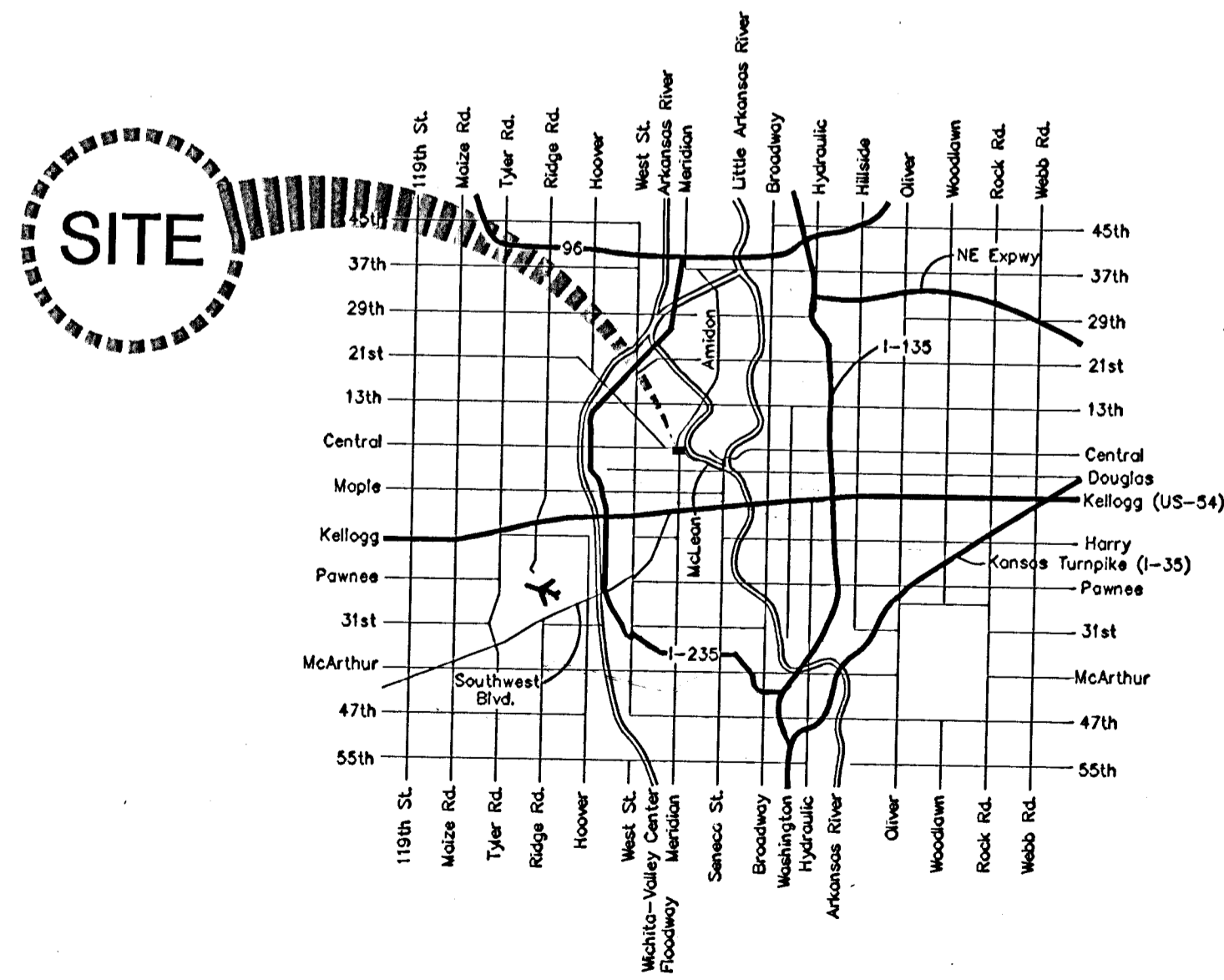


Benchmark

City Disc Located @ 12.89 m South
and 10.91 m West of the Centerline
of both Meridian & Central Ave.
Elev. = 397.376 SI Units
(1303.71 MSL Datum)

Index

- 1 Cover Sheet
- 2 Key Sheet
- 3 General Notes
- 4-5 Typical Sections
- 6-8 Plan Sheets - Paving
- 9-10 Intersection Details
- 11-16 Pavement Details
- 17-20 Inlet & Manhole Details
- 21 Plan-Profile Sheet - Sws Lines 1-4
- 22 Summary of Quantity Sheet
- 23-24 Light Column Site Plan & Details
- 25-26 Traffic Signalization Plan Sheets
- 27-31 Traffic Signalization Details
- 32 Pavement Marking & Signing Plan
- 33-37 Signing Details
- 38-40 Construction Sequencing



Vicinity Map

April, 2000

