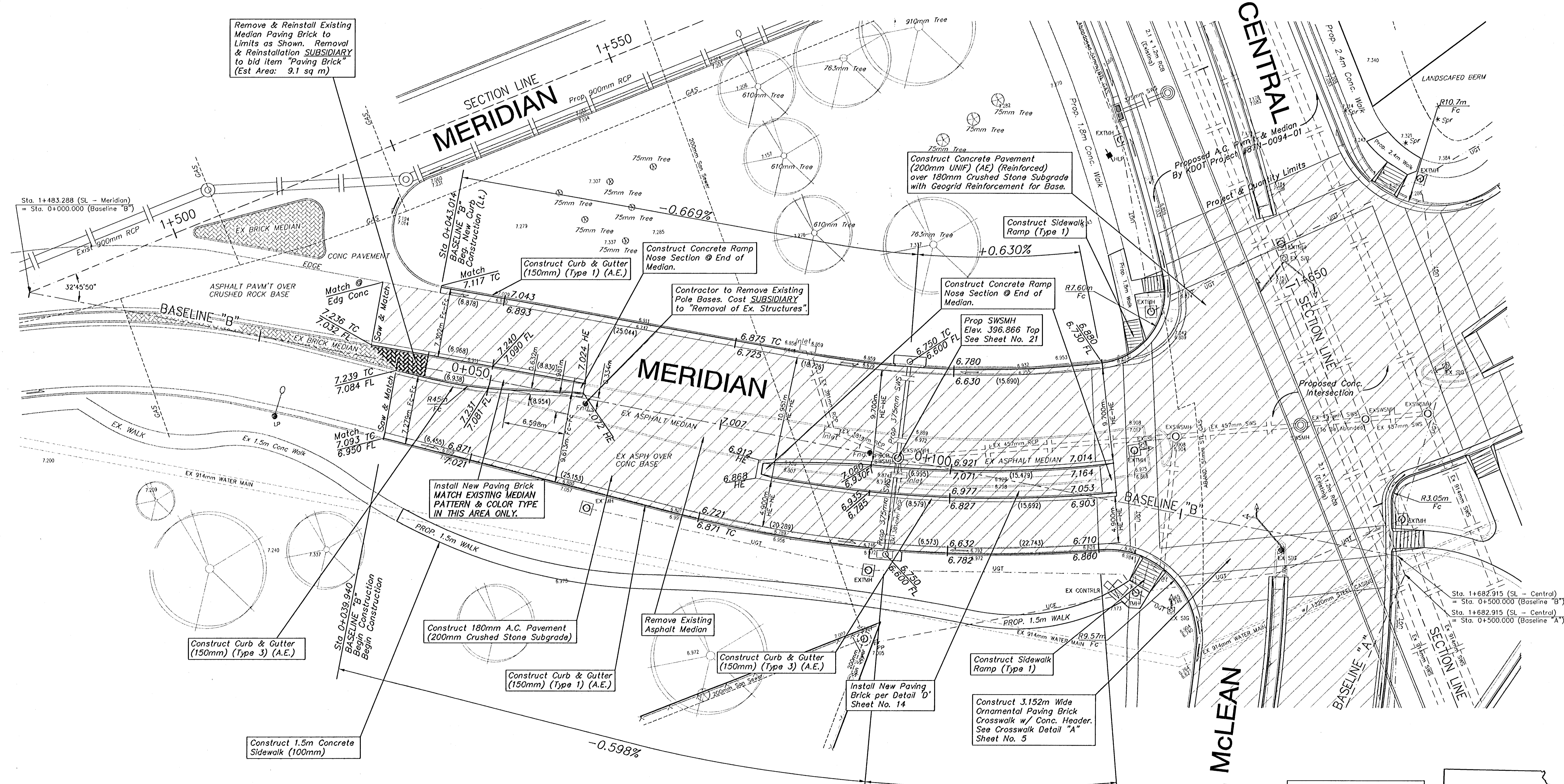
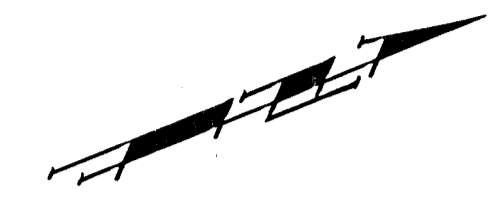
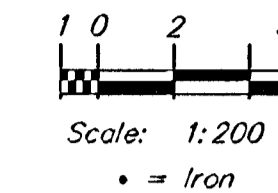


Benchmark

BM #1 - City Disc Located @ 12.89m South and 10.91m West of the Centerline of both Meridian and Central.
Elev. = 397.376 SI Units
(1303.71 MSL Datum)



Remove & Reinstall Existing Median Paving Brick to Limits as Shown. Removal & Reinstallation **SUBSIDIARY** to bid item "Paving Brick" (Est Area: 9.1 sq m)

Construct Concrete Pavement (200mm UNIF) (A.E) (Reinforced) over 100mm Crushed Stone Subgrade with Geogrid Reinforcement for Base.

Construct Concrete Ramp Nose Section @ End of Median.

Construct Concrete Ramp Nose Section @ End of Median.

Prop SWSMH Elev. 396.866 Top See Sheet No. 21

Install New Paving Brick MATCH EXISTING MEDIAN PATTERN & COLOR TYPE IN THIS AREA ONLY.

Construct Curb & Gutter (150mm) (Type 3) (A.E.)

Construct 1.5m Concrete Sidewalk (100mm)

Construct 180mm A.C. Pavement (200mm Crushed Stone Subgrade)

Construct Curb & Gutter (150mm) (Type 1) (A.E.)

Construct Curb & Gutter (150mm) (Type 3) (A.E.)

Construct Sidewalk Ramp (Type 1)

Install New Paving Brick per Detail "D" Sheet No. 14

Construct 3.152m Wide Ornamental Paving Brick Crosswalk w/ Conc. Header. See Crosswalk Detail "A" Sheet No. 5

NOTE:
Utility poles, electrical junction pedestals, boxes, and etc. are to be REMOVED & RELOCATED as necessary by the Respective Utility Company/ Owner PRIOR TO CONSTRUCTION of this Project.

NOTE:
Pavement, Sidewalks, and Etc. To Be Removed Are Indicated By

For Intersection Details, See Grading and Jointing Plans on Sheet No. 9-10

METRIC

DESIGN	DATE	CITY PROJECT NUMBER	BAUGHMAN PROJECT NUMBER
JFB	JULY99	472-78-245-82910	99-01-E966
DRAWN	SCALE	APPROVED	PROJECT
AZIERE	NOTED	JFB	F\MCLNINTP\AV
			DRWEN 2300
			INTRPAV2.DWG

CAPITAL IMPROVEMENT PROJECT
INTERSECTION IMPROVEMENTS AT CENTRAL & McLEAN

BAUGHMAN COMPANY P. A.
ENGINEERING, SURVEYING, & PLANNING
316-262-7271 • 315 ELLIS • WICHITA, KANSAS 67211

SHEET **7** OF **40**