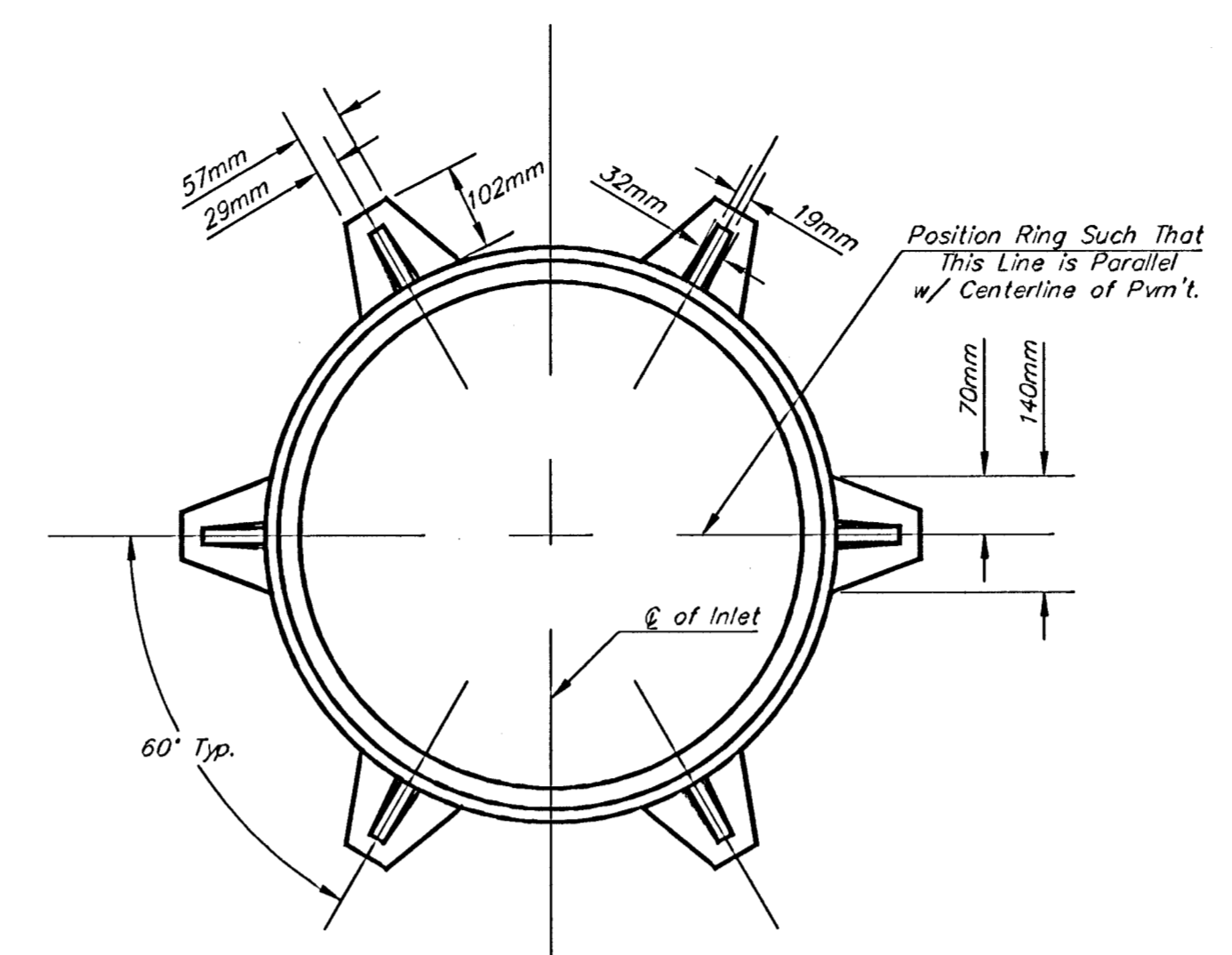


PLAN



MANHOLE RING AND COVER

PRECAST SLAB AND FLOOR REINFORCING

| MARK | SIZE | W = 1.321m | | W = 1.626m | | W = 1.930m | | W = 2.235m | | W = 2.540m | |
|------|------|------------|--------|------------|--------|------------|--------|------------|--------|------------|--------|
| | | NO. | LENGTH | NO. | LENGTH | NO. | LENGTH | NO. | LENGTH | NO. | LENGTH |
| a1 | #M13 | 13 | 2.007m | 13 | 2.616m | 13 | 3.226m | 13 | 3.835m | 13 | 4.445m |
| * a2 | #M13 | 4 | 1.829m | 4 | 2.438m | 4 | 3.048m | 4 | 3.658m | 4 | 4.267m |
| a3 | #M13 | 23 | 1.245m | 23 | 1.549m | 23 | 1.854m | 23 | 2.159m | 23 | 2.464m |
| b1 | #M13 | 1 | 2.972m | 1 | 2.972m | 1 | 2.972m | 1 | 2.972m | 1 | 2.972m |
| * b2 | #M13 | 23 | 3.378m | 29 | 3.378m | 35 | 3.378m | 41 | 3.378m | 47 | 3.378m |
| x1 | #M13 | 8 | 1.168m | 8 | 1.270m | 8 | 1.372m | 8 | 1.473m | 8 | 1.575m |

WALL REINFORCING

| MARK | SIZE | W = 1.321m | | W = 1.626m | | W = 1.930m | | W = 2.235m | | W = 2.540m | |
|------|------|------------|--------|------------|--------|------------|--------|------------|--------|------------|--------|
| | | NO. | LENGTH | NO. | LENGTH | NO. | LENGTH | NO. | LENGTH | NO. | LENGTH |
| w1 | #M13 | ① | 3.378m | ① | 3.378m | ① | 3.378m | ① | 3.378m | ① | 3.378m |
| w2 | #M13 | ② | 1.245m | ② | 1.550m | ② | 1.854m | ② | 2.159m | ② | 2.464m |
| w3 | #M13 | ③ | 30 | ③ | 34 | ③ | 38 | ③ | 42 | ③ | 46 |
| w4 | #M13 | ④ | 22 | ④ | 22 | ④ | 22 | ④ | 22 | ④ | 22 |

* Field Bend or Cut Reinforcing as Required for Clearance.
 ① (H - 572mm)/152mm + ((H - 851mm)/152mm)
 ② 2(H - 572mm)/152mm
 ③ H - 327mm
 ④ H - 622mm

STANDARD CURB INLET PRECAST TOPS

| W | PRE-CAST TOP SIZE | PIPE SIZE | CU. M. CONC. |
|--------|-------------------------|-----------------|--------------|
| 1.321m | 1.118m x 3.454m x 191mm | 533mm & SMALLER | 0.63± |
| 1.626m | 1.422m x 3.454m x 191mm | 610mm & 762mm | 0.83± |
| 1.930m | 1.727m x 3.454m x 191mm | 914mm & 1.067m | 1.03± |
| 2.235m | 2.032m x 3.454m x 191mm | 1.219m & 1.372m | 1.23± |
| 2.540m | 2.337m x 3.454m x 191mm | 1.524m & 1.676m | 1.43± |

BENDING DIAGRAM

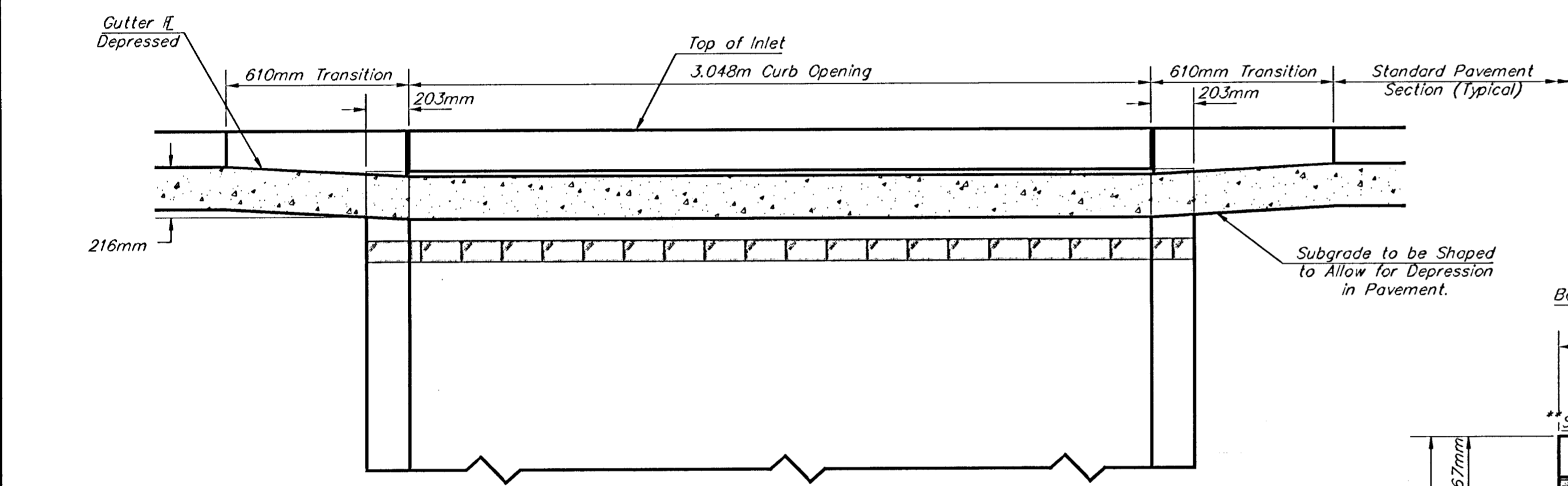
GENERAL NOTES:

Concrete shall be C.O.W. standard paving mix. All exposed edges shall be finished with an edging tool. Reinforcing bars shall be field bent or cut to clear pipes and inlet rings. All bars are #M13 bars @ 152mm spacing and shall have a minimum clearance of 38mm unless otherwise noted. Floors of inlet shall be shaped with 8 sack sand mix concrete to increase hydraulic efficiency such that the inlet will be self cleaning between all inlet and/or outlet pipe(s).

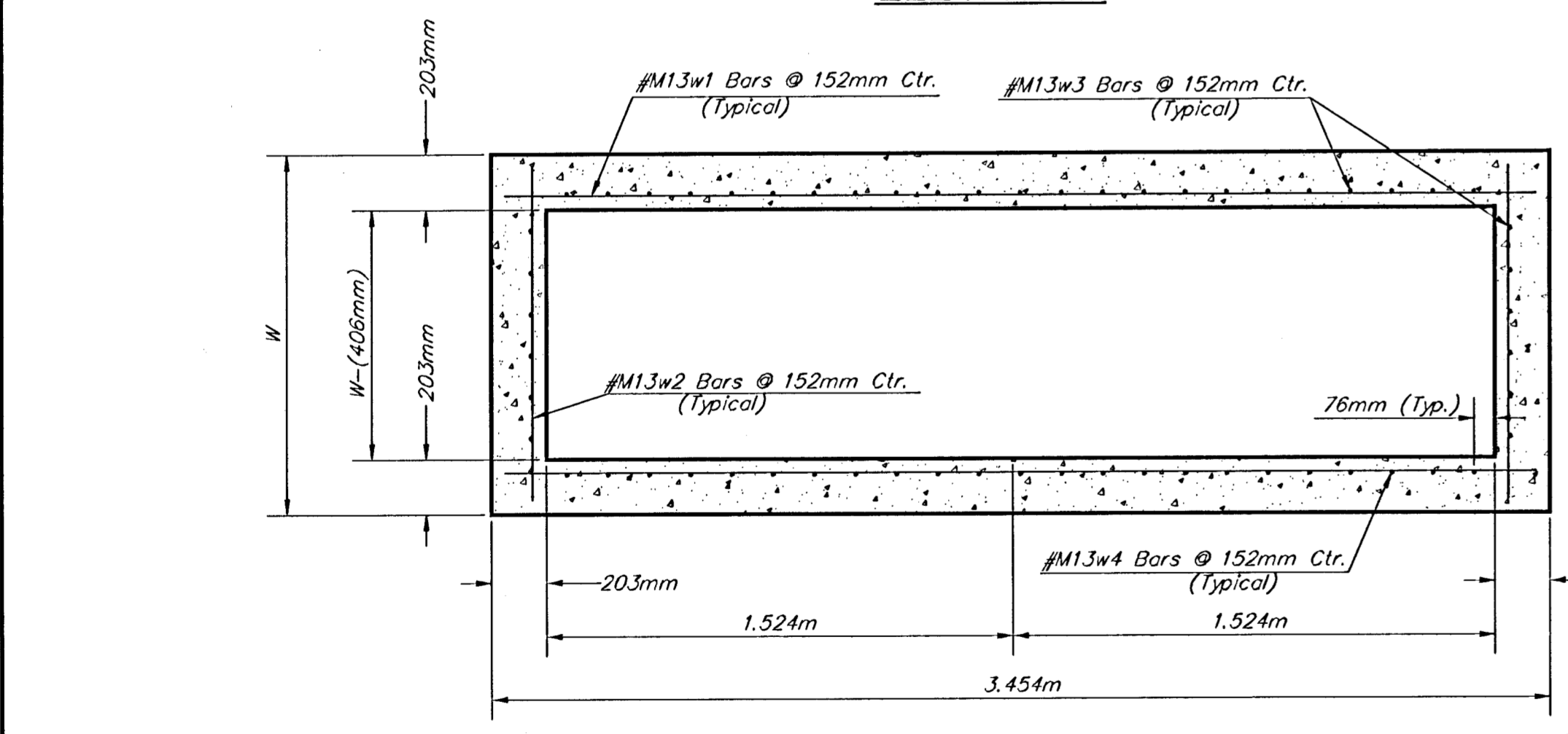
Concrete tops to be installed on thin mortar cushion to insure full support along walls. Concrete tops may be cast in place or precast.

The ends of all pipes installed in inlets shall be cut off flush with the inside face of the inlet wall.

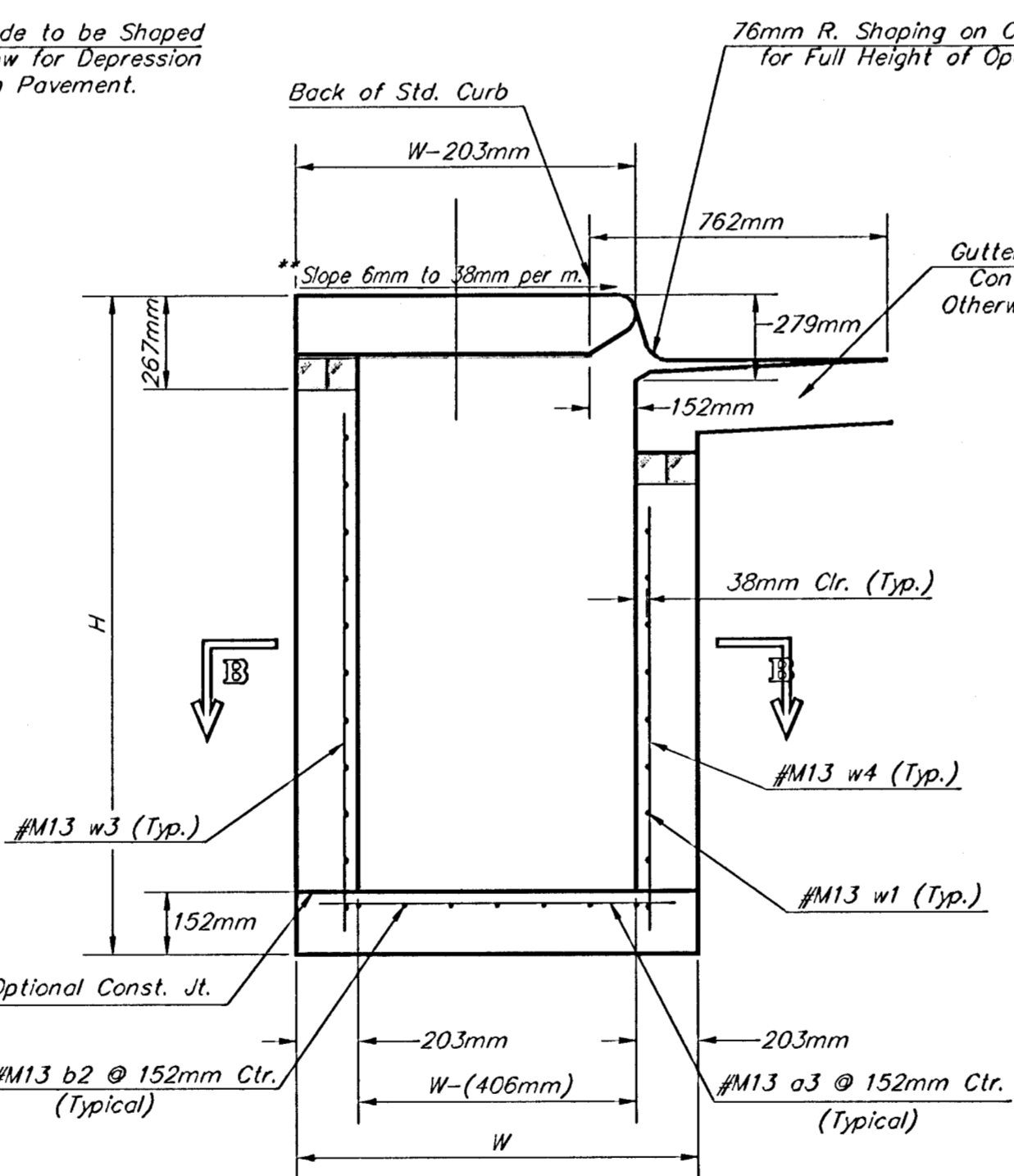
See Pavement Underdrain Detail, Sheet 1.3.



ELEVATION

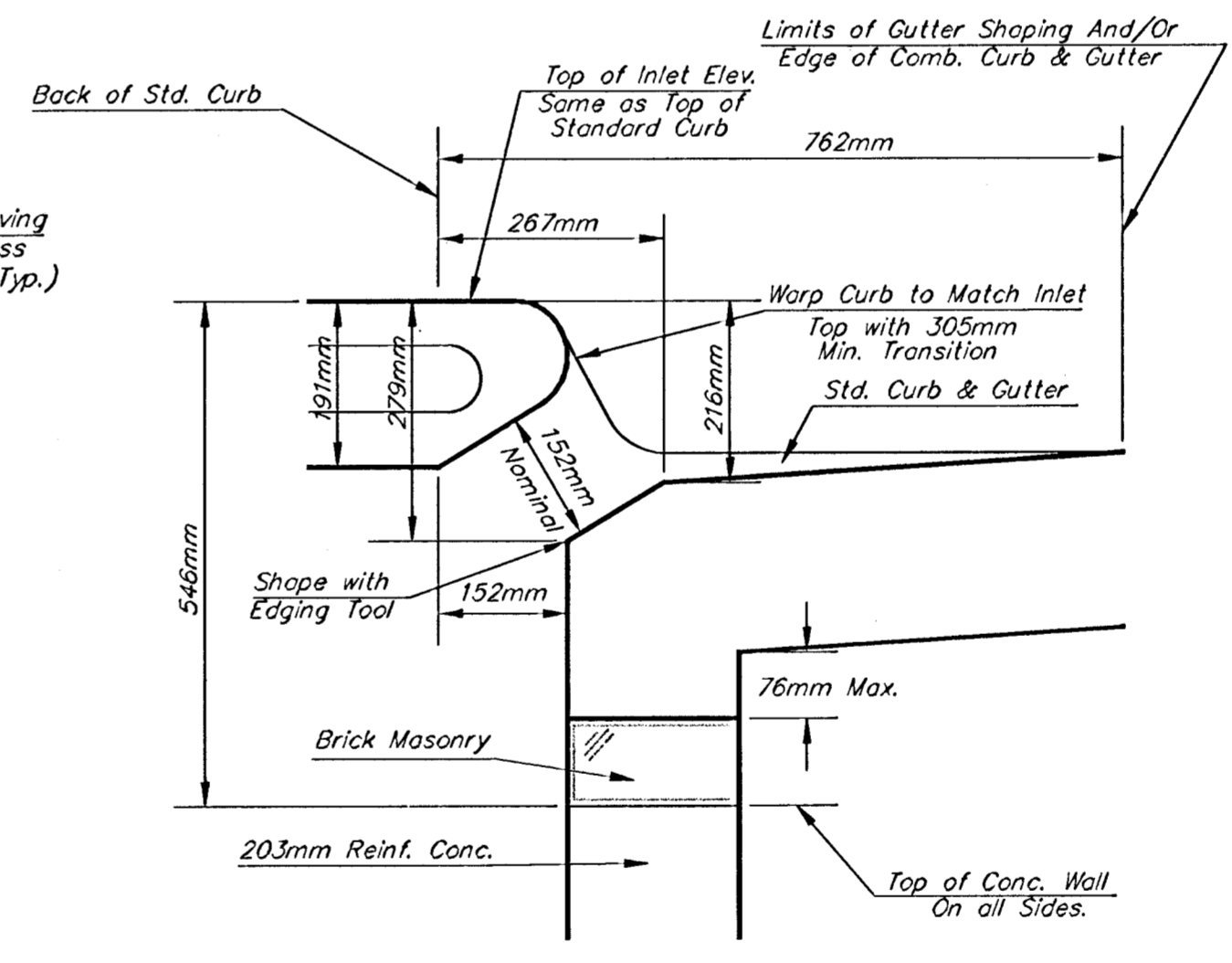


SECTION B-B

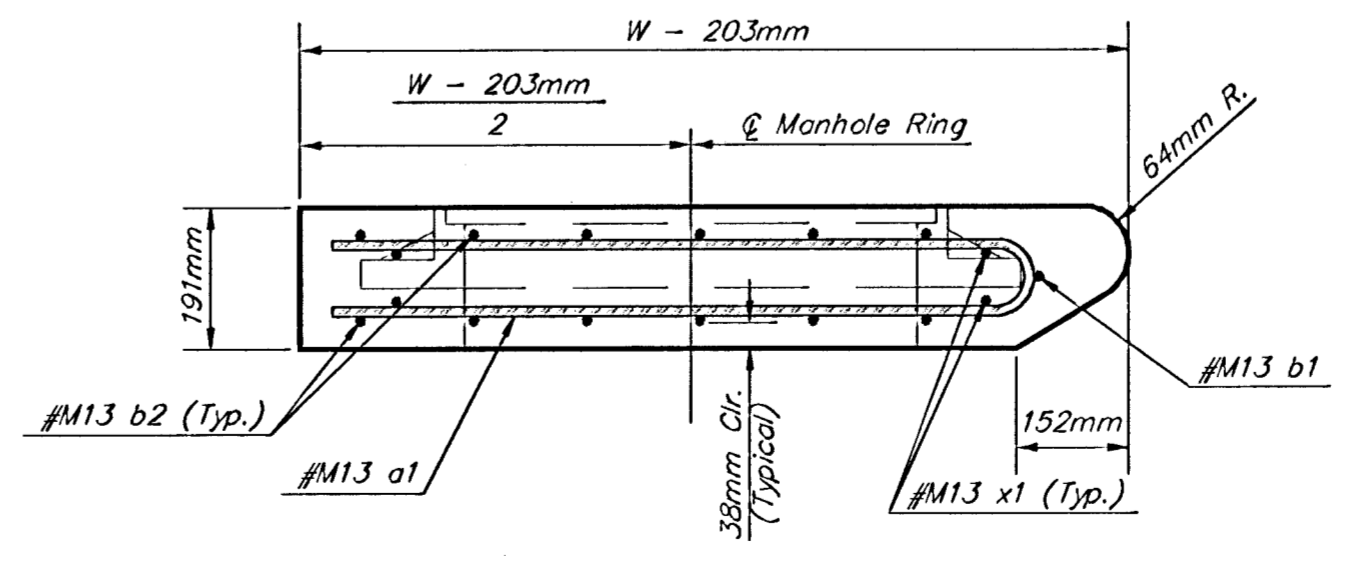


SECTION D-D

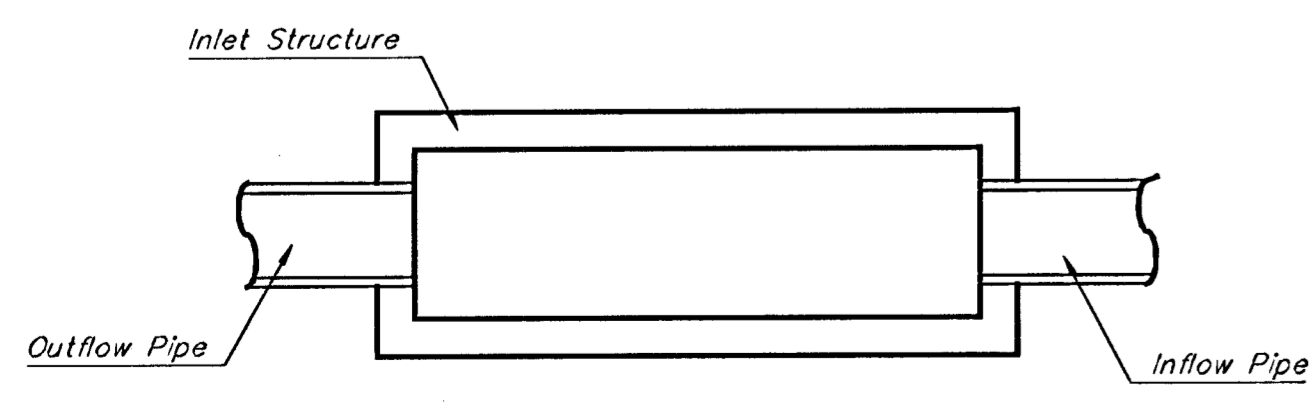
NOTES:
 ** Slope of inlet tops to match sidewalk of parking slopes within limits indicated



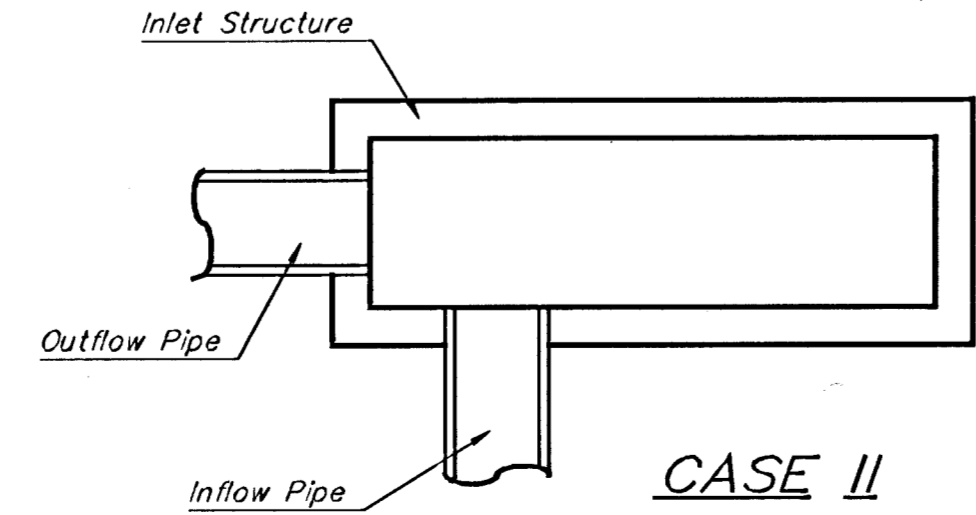
SECTION C-C



SECTION A-A



CASE I



CASE II

| | | | |
|--------|--------|---------------------|-------------------------|
| DESIGN | DATE | CITY PROJECT NUMBER | BAUGHMAN PROJECT NUMBER |
| STAFF | JULY99 | 472-78-245-82810 | 98-01-E985 |
| DRAWN | SCALE | APPROVED | FUNCTIONALITY |
| STAFF | NONE | JFB | MS1TYPI-D.DWG |

CITY OF WICHITA, KANSAS
STANDARD TYPE 1 DOUBLE CURB INLET DETAILS
 INLET OPENING - 152mm x 3.048m

BAUGHMAN COMPANY P. A.
 ENGINEERING, SURVEYING, & PLANNING
 316-262-7271 • 315 ELLIS • WICHITA, KANSAS 67211

Revised - July 23, 1998
 Revised - Feb. 16, 1989
 SHEET 18 OF 40