

GENERAL NOTES:

- The Contractor shall comply with all applicable safety regulations. All construction shall be completed following current City Standard Specifications and Special Provisions.
- Contractor will be required to provide notice to utility companies a minimum of seventy-two (72) hours prior to any excavation, as follows:

Kansas One-Call 687-2470

The Contractor must notify the following in case of an emergency:

AT&T	1-800-246-8464
Black Hills Energy	1-800-694-8989
City of Wichita Water & Sewer	1-316-219-8921
City of Wichita Stormwater	1-316-268-4090
City of Wichita Traffic	1-316-268-4034
Cox Communications	1-888-249-3530
Kansas Gas Service	1-888-482-4950
Evergy	1-800-544-4857

- Utility service lines, poles, etc. are to be adjusted as necessary by others prior to construction unless the plans specifically call for their adjustment by the Contractor or unless the plans specifically identify a utility to be adjusted by its owner during construction. Existing utilities and their location, as shown on the plans, represent the best information obtainable for design. The Contractor will be required to work around existing utilities within the right-of-way which do not conflict with proposed construction.

- Rubble from the removal of miscellaneous structures and excess excavation which is to be wasted shall be disposed of on sites to be provided by the Contractor. These sites shall be approved by the Engineer as to suitability, appearance and site location. Locations, in the opinion of the Engineer, that will leave an unsightly appearance will not be approved. All disposal sites must be approved by the Kansas Department of Health and Environment. Material either stockpiled or disposed of in a flood plain will require a Kansas State Board of Agriculture permit. Any material dumped in waters of the United States or wetlands is subject to U.S. Corps of Engineers permitting regulations. Any material buried or stockpiled beyond approved construction limits will require additional archaeological investigations unless buried in a previously approved borrow location.

- Trees and shrubs in public right-of-way which are in direct conflict with proposed new construction shall be removed by the Contractor with the City Engineer's approval. Trees and shrubs which are not in direct conflict with proposed new construction shall be saved and protected from damage.

- The Contractor shall give all property owners and/or tenants of developed property abutting the construction of this project a minimum of ten (10) days notice prior to start of construction.

- The Contractor shall be responsible for preserving property irons. The Contractor will be required to re-establish any property irons which are damaged or destroyed by his construction operations. Such irons shall be re-established by a licensed land surveyor in accordance with state laws.

- All elevations shown are NAVD88.

- Contractor shall limit the extent of trench openings overnight and weekends to less than 50 feet.

- The Contractor shall protect from damage and support existing utilities through construction as approved by the utility owner and the Engineer at the contractor's expense.

- All existing and proposed erosion control measures including silt fencing, erosion control mat, straw bales, inlet barriers, and const. entrance shall be maintained throughout construction by the contractor and until project is accepted by the City of Wichita. The on-site engineer shall complete weekly reports on the status of erosion control measures. The contractor shall be required to comply with maintenance and/or replacement of erosion control measures as determined by the on-site engineer until project is accepted by City of Wichita. Maintenance and/or replacement of erosion control measures to be paid by L.S. bid item "Maintain Existing BMPs".

- All excess excavation shall be removed from site, incidental to lump sum bid item "Site Restoration".
- All areas disturbed during construction that are not under pavement shall be sodded with Fescue upon completion. All costs associated with sodding including mobilization, preparation of ground, fertilizing, etc. shall be included in the L.S. bid item "Sodding".

An additional bid item for "Seeding, Temporary" has been included and must be used at the discretion of the design engineer. Temporary seed shall be Annual Rye at 5 lbs./1000 Sq. Ft. unless otherwise noted and shall be planted when permanent seed or sod cannot be used due to seasonal limitations. If the "Seeding, Temporary" bid item is not used, 100% of the pay item will be deducted from the contract. All costs associated with temporary seeding including mobilization, preparation of ground, seeding, etc., shall be included in the L.S. bid item "Seeding, Temporary".

- Total area disturbed estimated to be 750 sq. yds., to be used for bidding purposes only. Actual area disturbed will be based on contractors means and methods and should be limited to least amount practical.

- This project falls under the Jurisdiction of the US Army Corp of Engineers. A determination has been acquired and is authorized by the Department of the Army by nationwide permit (NWP) 58 Utility Line Activities for Water and Other Substances. Permit No. NWK-2023-00705. A partial list of conditions that the Contractor shall be required to meet is provide below for information and bidding purposes. A complete list is included with the permit which can be obtained from the City by request and is a condition of the Construction Contract.

- Construction Complete by March 14, 2026.
- Notify the Kansas Department of Health and Environment (KDHE) when construction starts via email at kdhe.nps@ks.gov.
- Notify the City of Wichita upon project completion to allow City Staff to submit a signed Compliance Certification to the US Army Corp of Engineers.

Benchmarks

BM #1: "□" cut on top of curb in front of fire hydrant near the common front lot corner of Lots 5 & 6, Rolling Hills Addition.
Elev. = 1328.62 (NAVD88)

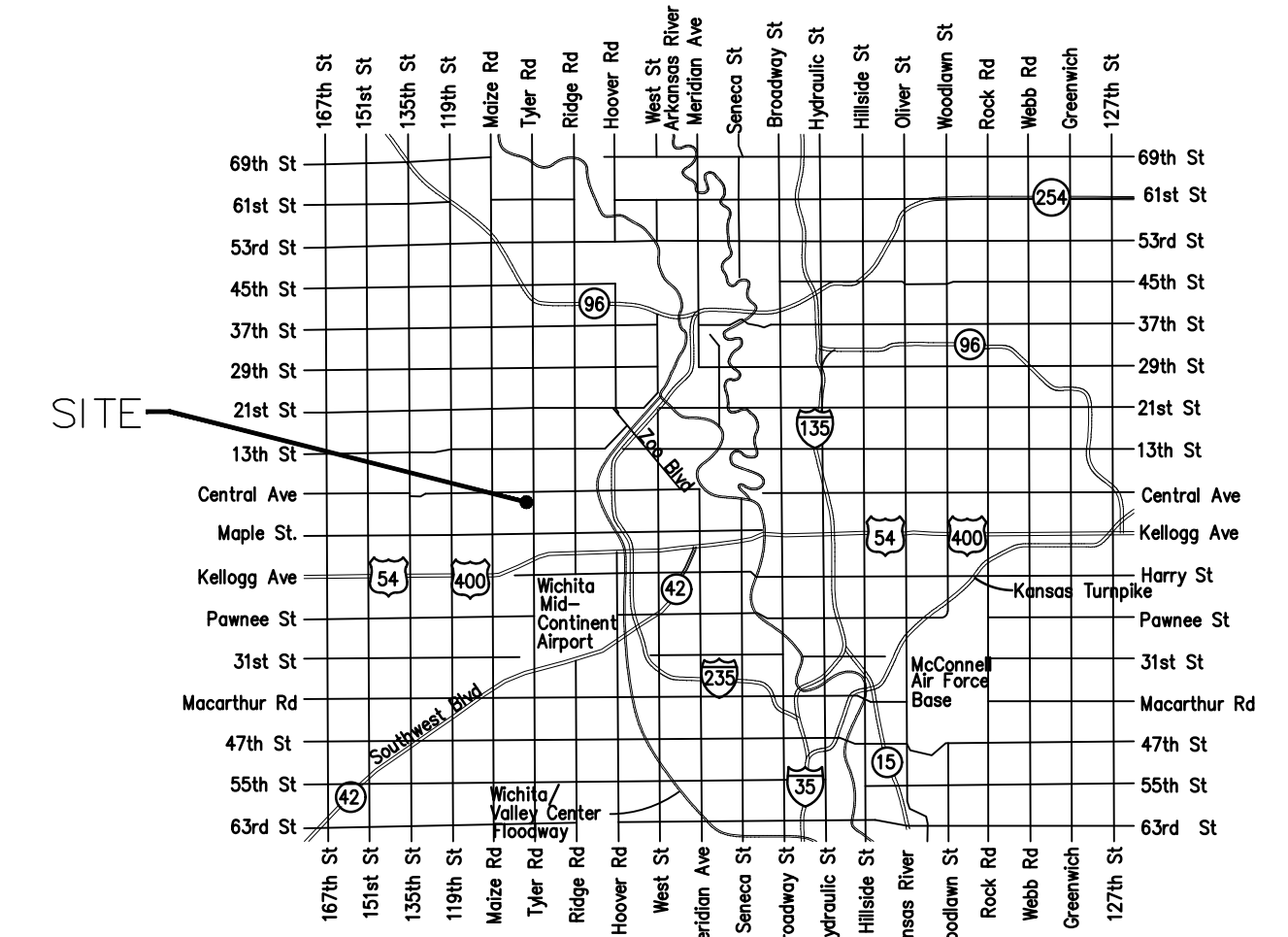
BM #2: "□" cut on top of curb, west end of NW curb return at the intersection of Rolling Hills Dr. and Wood Lane.
Elev. = 1327.42 (NAVD88)

Summary of Quantities

Site Clearing	1	LS
Site Restoration	1	LS
Traffic Control	1	LS
Irrigation System Repair	1	LS
Fill, Sand (Flushed & Vibrated)	211	LF
Grading, Ditch	1	LS
AC Pavement Removed	150	SY
Concrete Base 7"	150	SY
Concrete C & G Removed & Replaced	210	LF
AC Pavement 2"	150	SY
Rip-Rap, Heavy Stone	25	SY
Pipe, 36" End Section	1	EA
Pipe, SWS 24"	73	LF
Pipe, SWS 36"	320	LF
Inlet Underdrain	80	LF
Inlet, Curb (Type 2) (L=6'2-1/2" W=3'4-3/8")	1	EA
Inlet, Curb (Type 2) Special	3	EA
Inlet, Backyard	1	EA
Sodding	1	LS
Seeding, Temporary	1	LS
Tree Removal (Small) (<15"D)	5	EA
BMP, Curb Inlet Protection	4	EA
BMP, Ditch Check	2	EA
BMP, Drop Inlet Protection	1	EA

STORM SEWER IMPROVEMENTS to serve ROLLING HILLS ADDITION CITY OF WICHITA, KANSAS

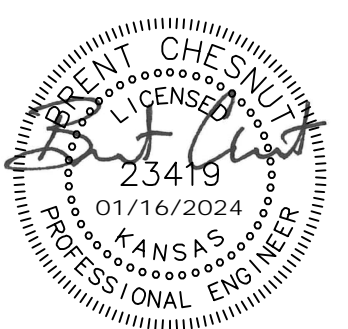
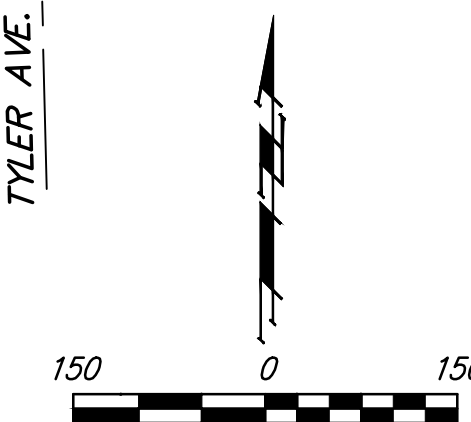
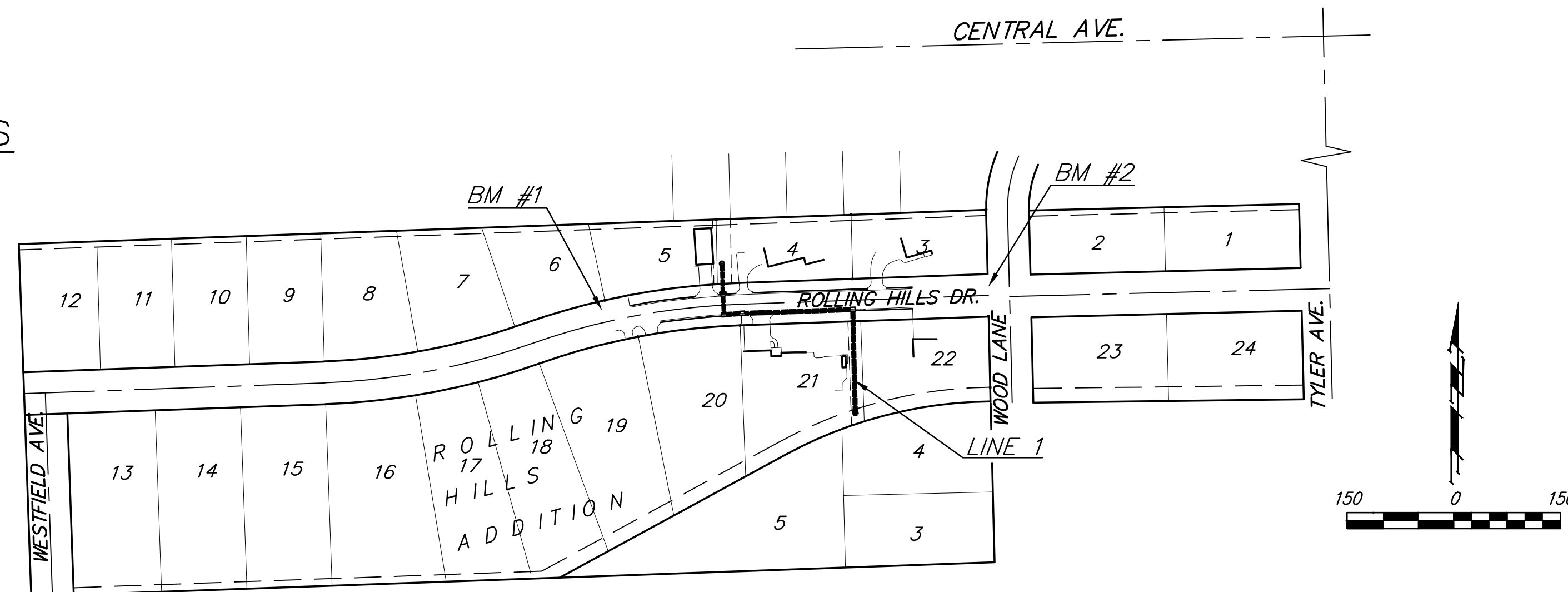
Paul Gunzelman, P.E. City Engineer
Project Number
SWS #795
458-2023-085560



Vicinity Map

Sheet Index

Title Sheet	1
Line 1	2-3
Erosion Control Plan	4
Type 2 Double Inlet Detail	5
Special Type II Inlet/Manhole	6
Curb Inlet Pavement Underdrain Detail	7
Backyard Inlet	8
Miscellaneous Detail (Storm Sewer)	9
Erosion Control BMP Details	10-14
Coordinate Sheet	15
Hydrology and Hydraulics Summary	16



January 16, 2024