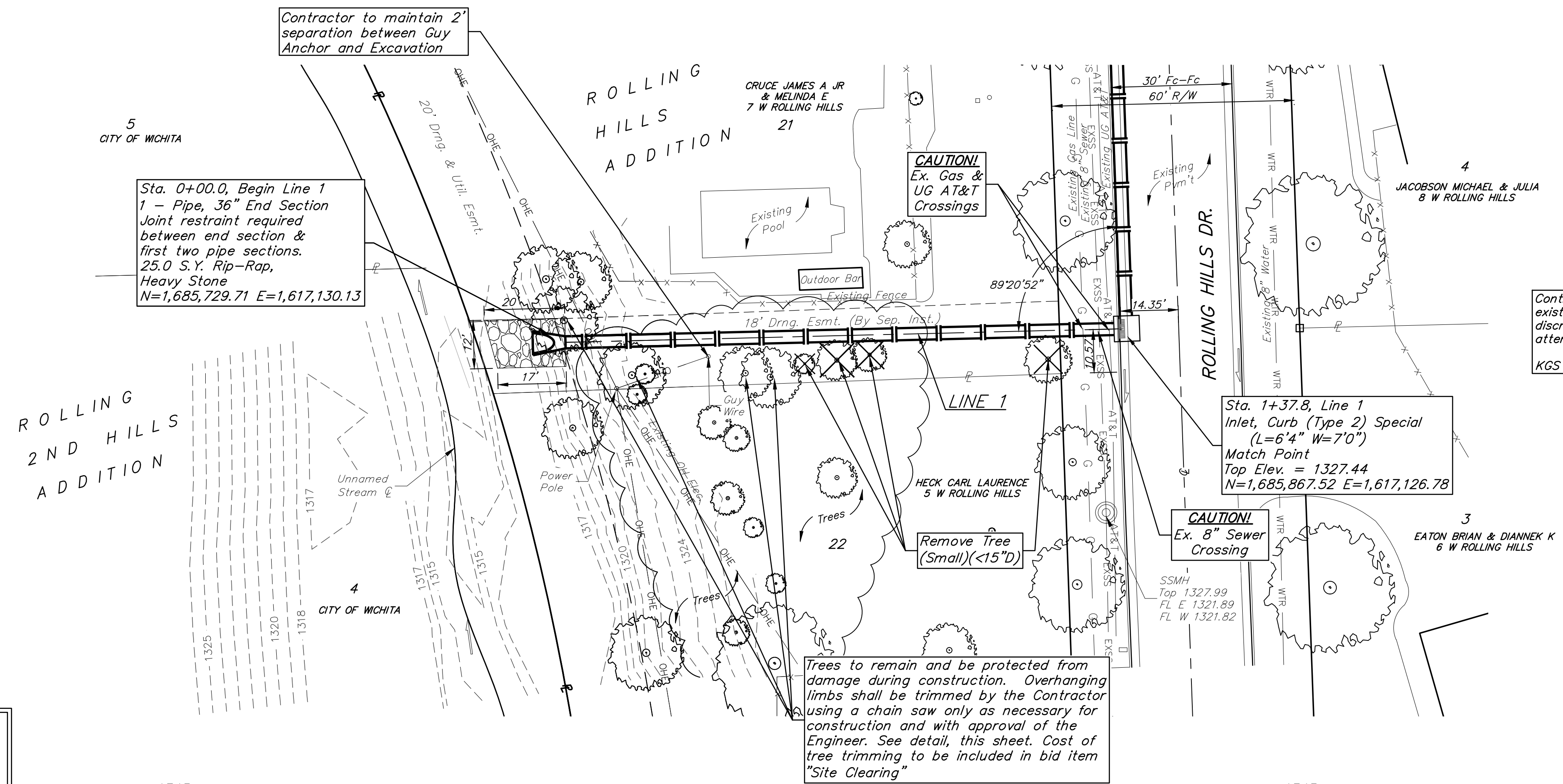
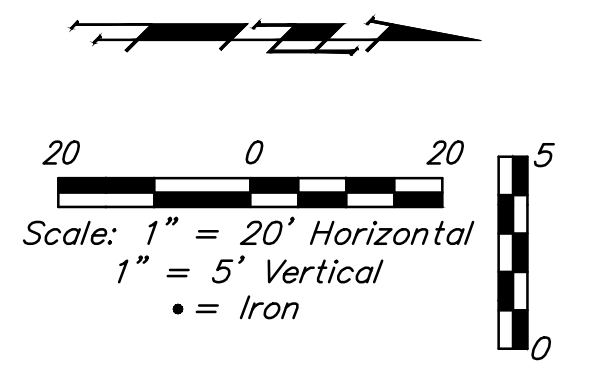


BENCHMARKS:

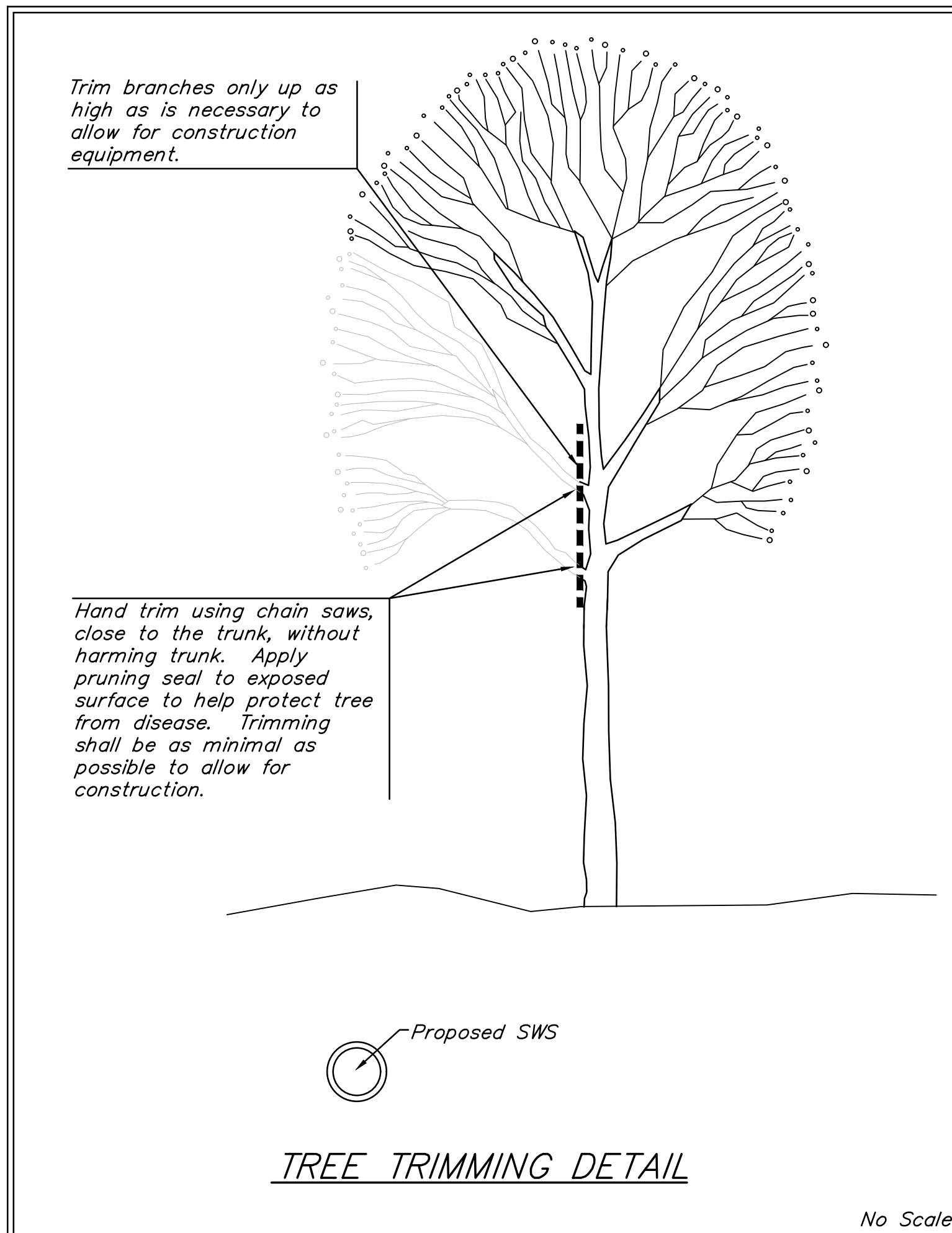
BM #1: "□" cut on top of curb in front of fire hydrant near the common front lot corner of Lots 5 & 6, Rolling Hills Addition.
Elev. = 1328.62 (NAVD88)

BM #2: "□" cut on top of curb, west end of NW curb return at the intersection of Rolling Hills Dr. and Wood Lane.
Elev. = 1327.42 (NAVD88)

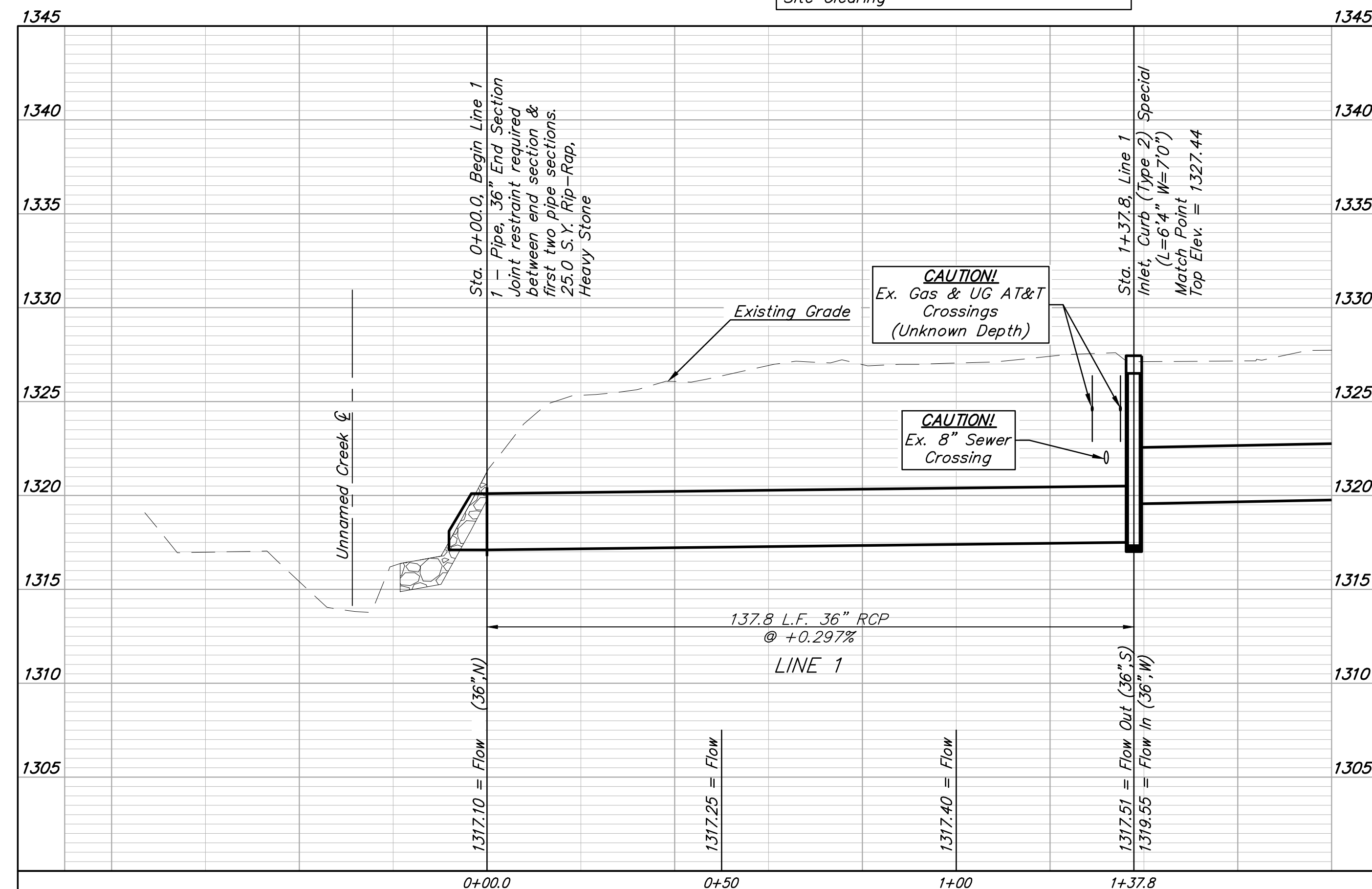


Contractor to field verify depth and location of existing utilities prior to construction. Any discrepancies or conflicts shall be brought to the attention of the Engineer and utility owner.
KGS Adam Knolla 316-832-3123

Trees to remain and be protected from damage during construction. Overhanging limbs shall be trimmed by the Contractor using a chain saw only as necessary for construction and with approval of the Engineer. See detail, this sheet. Cost of tree trimming to be included in bid item "Site Clearing"



No Scale



BAUGHMAN COMPANY

315 Ellis St.
Wichita, KS 67211
316-262-7271
BaughmanCo.com

ROLLING HILLS ADDITION

LINE 1

STORM WATER SEWER IMPROVEMENTS

PROJECT NUMBER:
23-08-E579

DESIGN: BC DRAWN: TMS

DATE: January 16, 2024

SHEET **2** OF **16**

File: E:\Projects\Wichita Rolling Hills Dr Stormwater (23-08-E579)\Engineering\SW\SW\SW.dwg