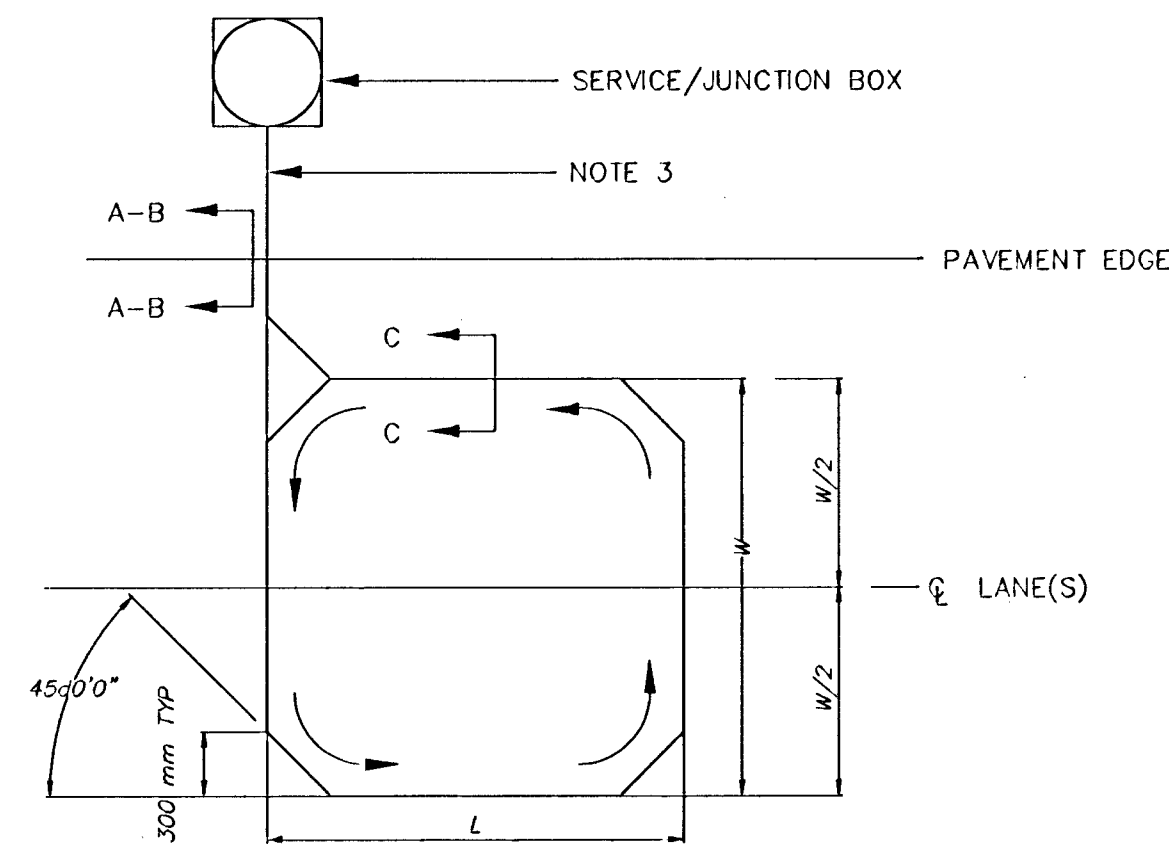
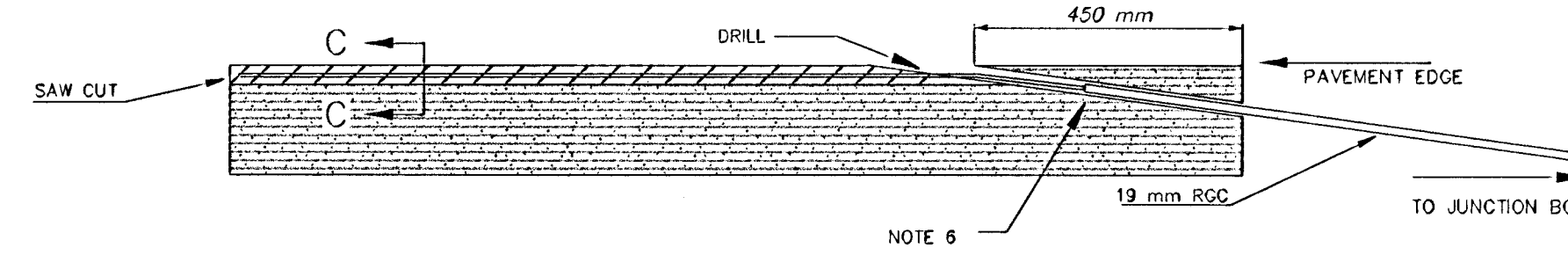


Loop Construction/Installation Details

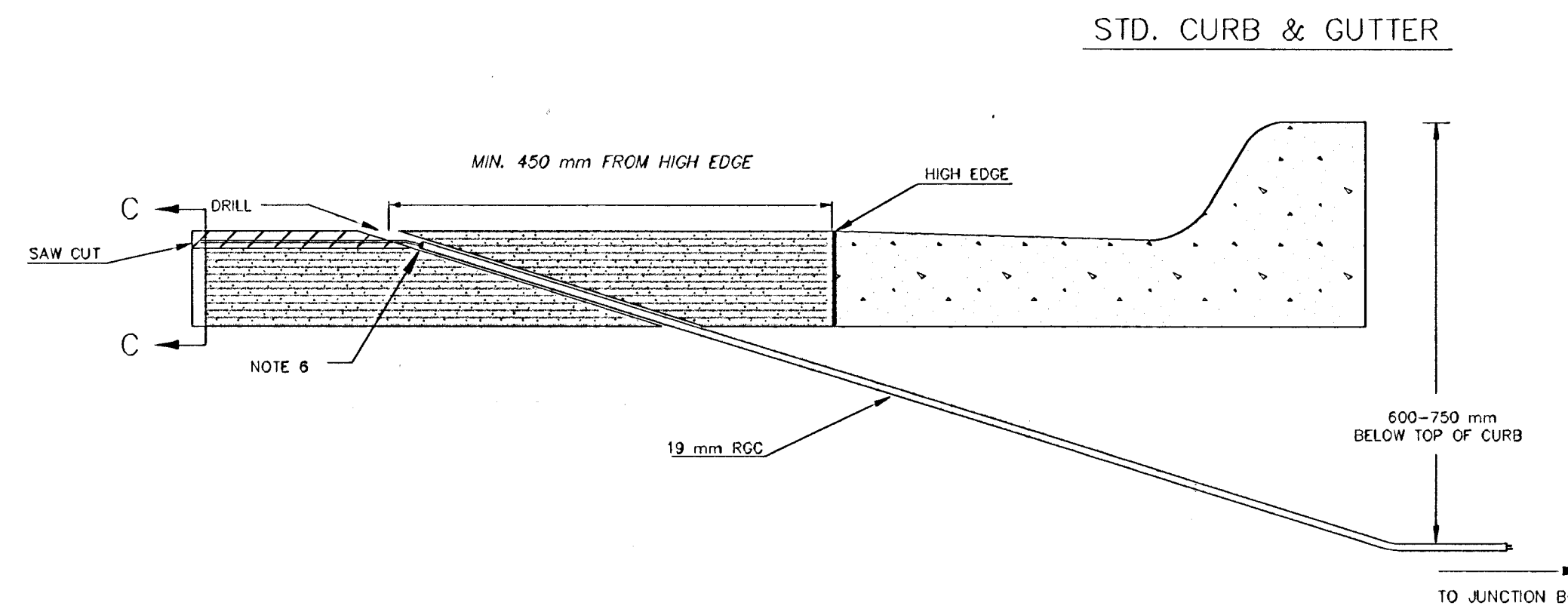
Typical Conventional Loop Installation



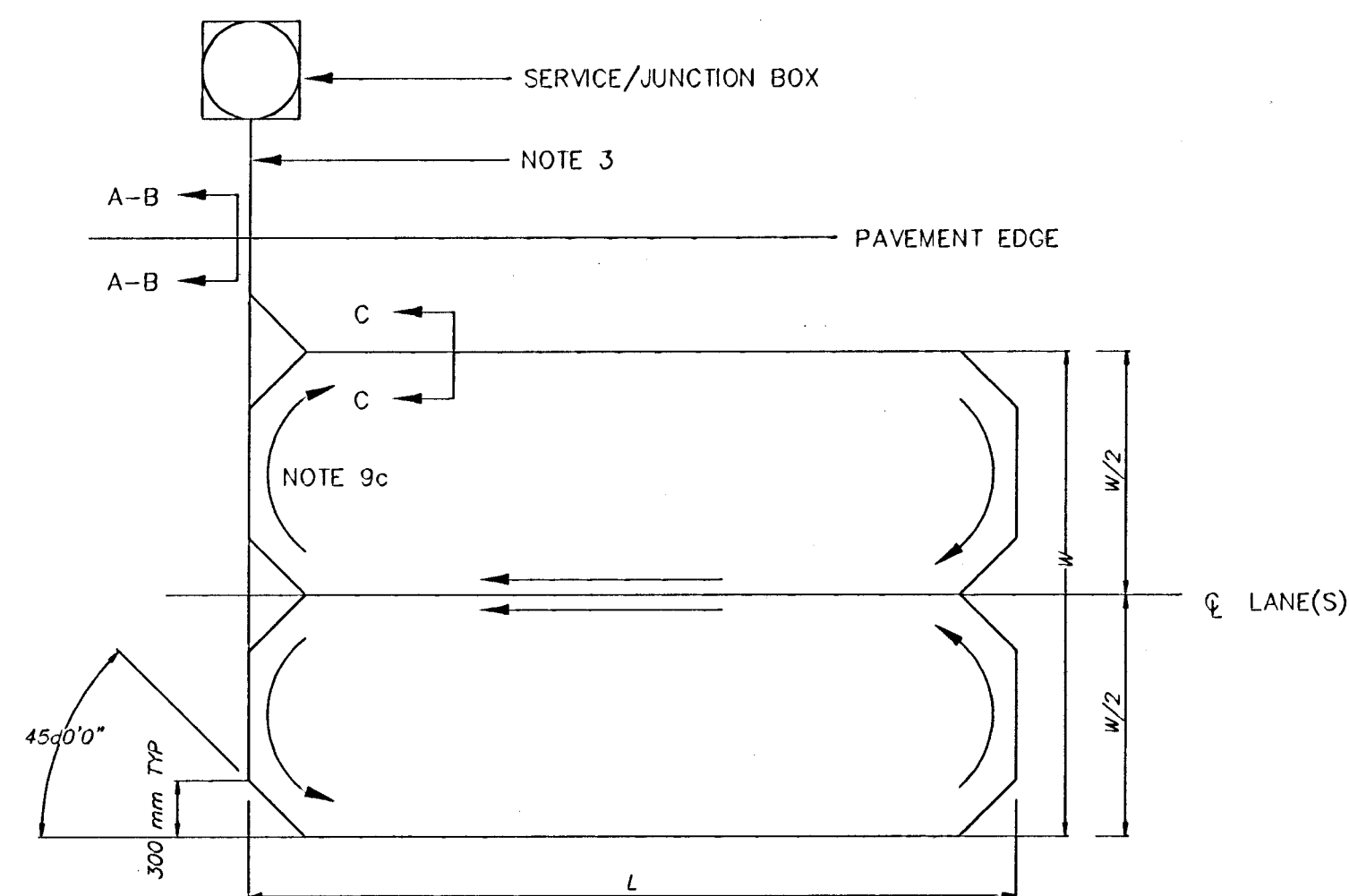
Detail A - No Curb & Gutter



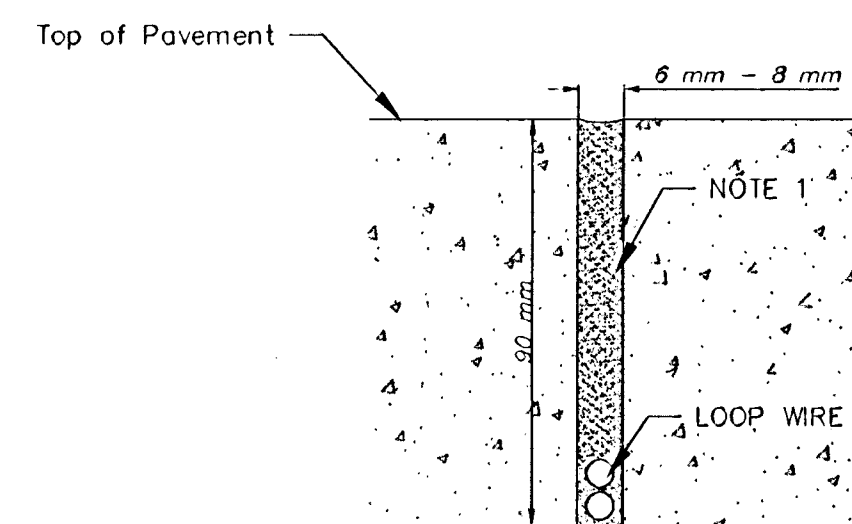
Detail B - Full Curb & Gutter



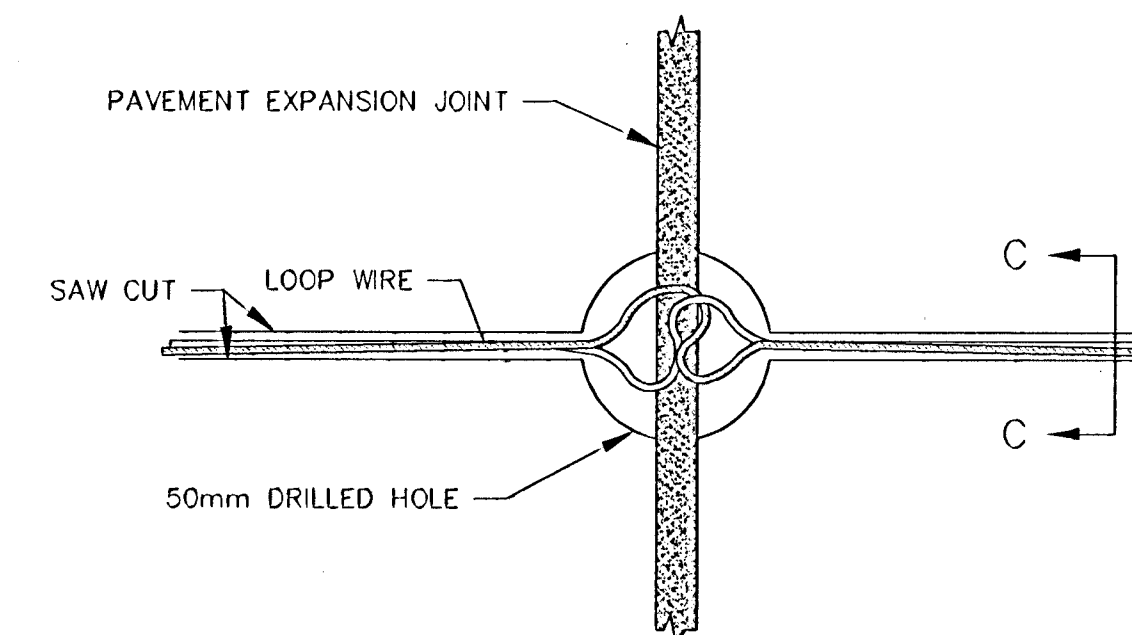
Typical Quadrapole Loop Installation



Detail C - Saw Cut



Detail D - Pavement Joint Crossing



NOTES:

1. Loop saw cut shall be filled with approved sealant to within 3 mm of pavement surface.
2. All loops shall be wound in the same direction.
3. Loop wire between the loop and the service/junction box shall be twisted 6 turns per meter.
4. No expansion joint in the pavement or curb & gutter shall be utilized in the placement of loop wire runs or conduit embedding.
5. The loop wire shall not pass through any part of any drive approach and/or corner radius.
6. All conduit ends shall be sealed with duct seal to prevent loop sealant from entering conduit.
7. Loop feeder conduit shall be a minimum of 300 mm from any other loop feeder conduit.
8. Saw cuts running parallel with expansion joint or any other saw cut shall be a minimum of 300 mm apart.
9.
 - a. Loops 8 m or less - 4 turns.
 - b. Loops over 8 m - 3 turns.
 - c. Quadrapole loops - 2-4-2 turns.
10. The loop wire shall have 50 mm slack at all crossings of pavement joints to allow for expansion/contraction of pavement. - Detail "D"

REV. DATE	COMMENTS	INT

DESIGN	DATE	QTY PROJECT NUMBER	BAUGHMAN PROJECT NUMBER
STAFF	JULY99	472-76-245-82910	09-01-E965
DRAWN	SCALE	APPROVED	DIRECTOR
STAFF	NONE	JFB	F. W. MCLENNAN/TRAFFIC
SHEET TITLE			LOOP1M.DWG

CAPITAL IMPROVEMENT PROJECT	
LOOP DETAILS	
CENTRAL & MCLEAN INTERSECTION IMPROVEMENTS	

BAUGHMAN COMPANY P. A. ENGINEERING, SURVEYING, & PLANNING 316-262-7271 • 315 ELLIS • WICHITA, KANSAS 67211	SHEET
	27

OF
40