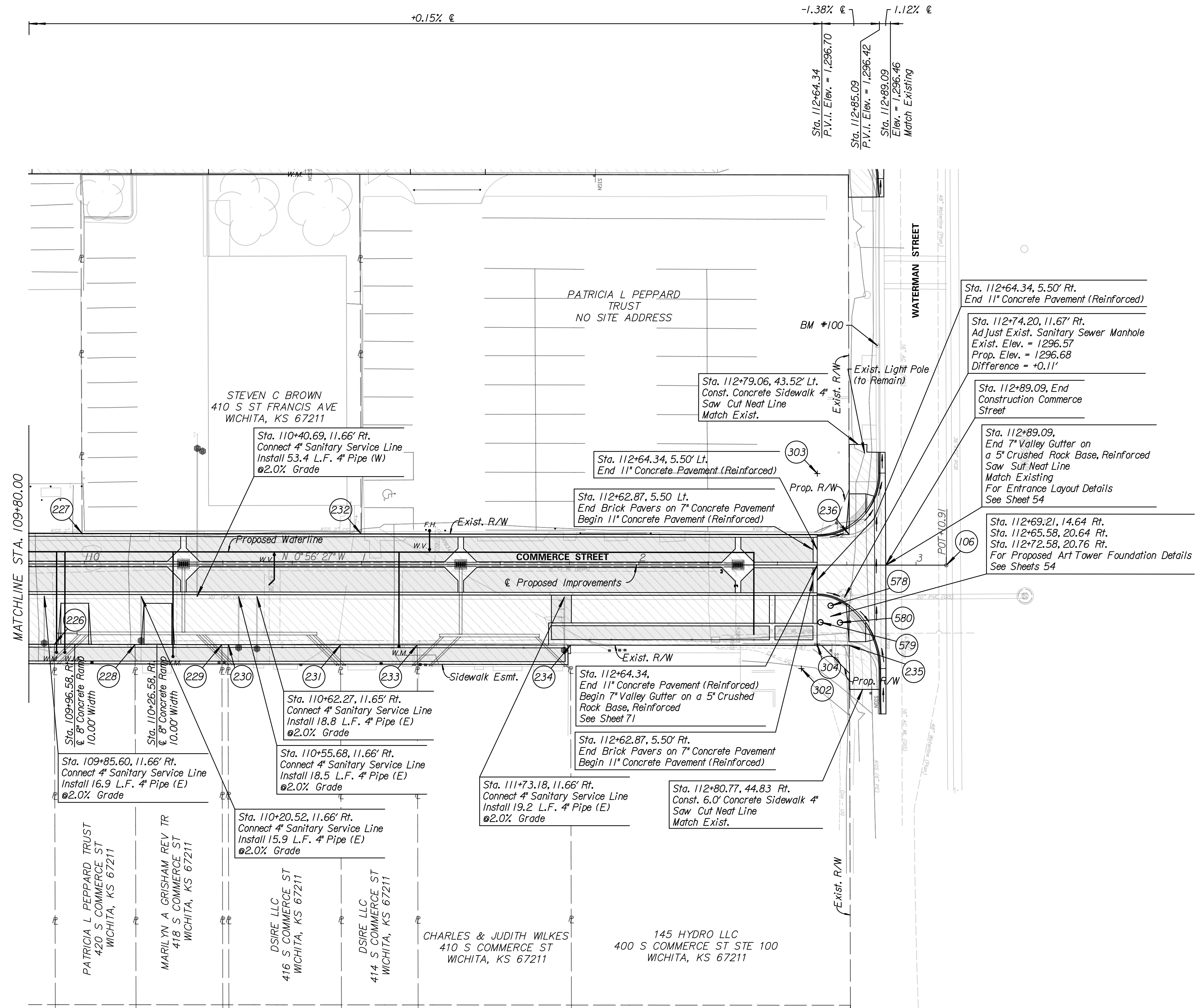


For proposed are tower foundation details, see sheets 26-27



TRANSYSTEMS
 245 N. WACO
 SUITE 222
 WICHITA, KANSAS 67202
 MAIN: 316-303-3000
 FAX: 316-462-5629

CONSULTANTS:

COMMERCE STREET & ST. FRANCIS AVENUE IMPROVEMENTS FROM WATERMAN TO KELLOGG



REVISIONS:	MARK	DATE	DESCRIPTION

PROJ NO: 472-2021
 SCALE: 1"=20'
 DATE: 2/21/2024
 DESIGNED BY: MLC
 DRAWN BY: DJK
 CHECKED BY: MDB

SHEET TITLE:
COMMERCE STREET IMPROVEMENTS
 STA. 109+80.00 TO STA. 112+89.09

SHEET NO.
10
 SHEET 10 OF 163

BM #100
 cut on top NW cor of electrical transformer pad.
 N: 1,684,287.2601
 E: 1,650,540.8426
 79.20 Lt., Sta. 112+85.98, Elevation = 1296.68

2/21/2024 11:43:07 AM c:\transystems\pwworking\localtransystems\pwworking\1254772C-RDWM-M02-103.dgn