

Sta. 7+00.00, Line G1-MH12 =  
 @ Sta. 16+20.00, 12.00' Rt.  
 Const. Inlet (Grated, Single), G1  
 Install 15' x 101.0' Storm Sewer  
 (RCP)(N)  
 See Sheets 29-38 (435)

Sta. 8+01.00, Line G1-MH12 =  
 @ Sta. 17+21.00, 12.00' Rt.  
 Const. Inlet (Grated, Single), G2  
 Install 15' x 109.0' Storm Sewer  
 (RCP)(N)  
 See Sheets 29-38 (437)

Sta. 9+10.03, Line G1-MH12 =  
 @ Sta. 18+30.00, 14.50' Rt.  
 Const. Inlet (Type 1) Curb Inlet, G3  
 (L=5.0')(W=4.0')  
 Install 18' x 51.5' Storm Sewer  
 (RCP)(NW)  
 See Sheets 29-38 (440)

Sta. 9+61.54, Line G1-MH12 =  
 Sta. 10+00.00, Line MH8-MH13 =  
 @ Sta. 18+80.97, 8.61' Rt.  
 Const. Reinforced Concrete Manhole, MH8  
 (L=4.0')(W=4.0')  
 Install 24' x 34.4' Storm Sewer  
 (RCP)(N)  
 See Sheets 29-38 (443)

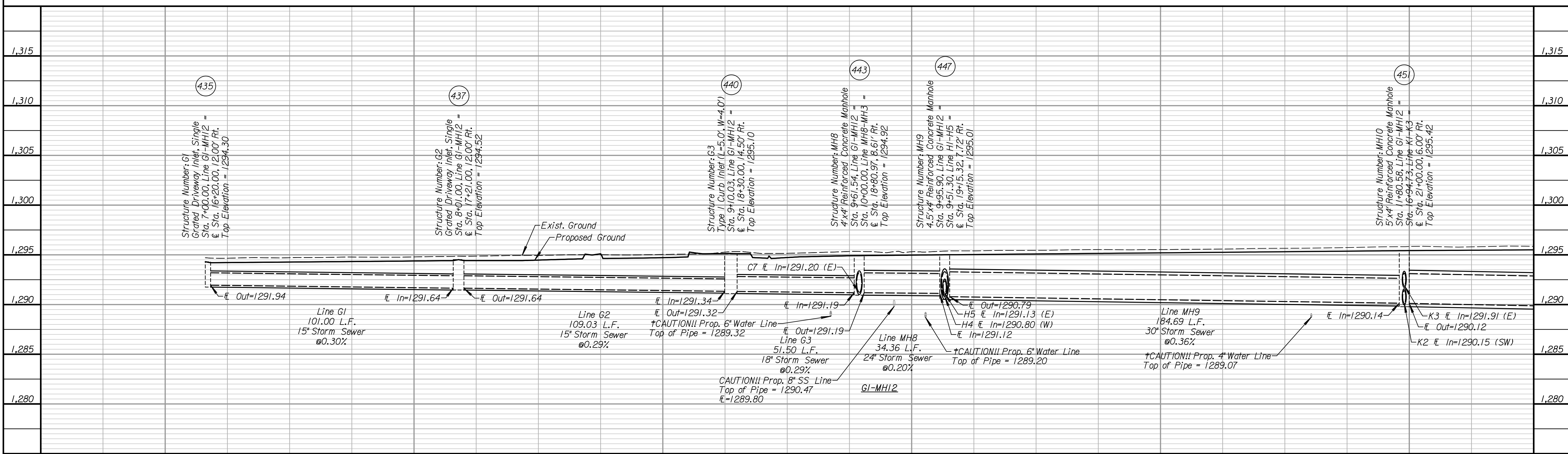
Sta. 18+71.07, 32.81' Rt.  
 Remove Exist. SWS Manhole  
 Remove 49.5 L.F. 10' VCP (SW)  
 (440)

Sta. 9+95.90, Line G1-MH12 =  
 Sta. 9+51.30, Line H1-H5 =  
 @ Sta. 19+15.32, 7.72' Rt.  
 Const. Reinforced Concrete Manhole, MH9  
 (L=4.5')(W=4.0')  
 Install 30' x 184.7' Storm Sewer  
 (RCP)(N)  
 See Sheets 29-38 (447)

Sta. 11+80.58, Line G1-MH12 =  
 Sta. 16+94.73, Line K1-K3 =  
 Sta. 21+00.00, 6.00' Rt.  
 Const. Reinforced Concrete Manhole, MH10  
 (L=5.0')(W=4.0')  
 Install 36' x 133.6' Storm Sewer  
 (RCP)(N)  
 See Sheets 29-38 (451)

Sta. 20+89.69, 3.20' Lt. to  
 Sta. 20+99.69, 3.19' Lt.  
 Remove 10.0 L.F. 24'x27' Brick Arch

Sta. 20+99.69, 3.19' Lt. to  
 Sta. 22+21.42, 3.12' Lt.  
 Abandon 121.7 L.F. 24'x27' Brick Arch  
 in place, plug both ends & fill with  
 20.3 C.Y. Flowable Fill



CONSULTANTS:

**COMMERCE STREET & ST. FRANCIS  
 AVENUE IMPROVEMENTS  
 FROM WATERMAN TO KELLOGG**

WICHITA, KANSAS

REVISIONS:	MARK	DATE	DESCRIPTION

PROJ NO: 472-2021  
 SCALE: 1"=20'  
 DATE: 2/21/2024  
 DESIGNED BY: MLC  
 DRAWN BY: DJK  
 CHECKED BY: MDB

**SHEET TITLE:**  
**ST. FRANCIS AVENUE  
 STORM SEWER  
 IMPROVEMENTS  
 SYSTEM G**

IF THIS DRAWING IS LESS THAN 22" X 36" IT IS A REDUCED SIZE DRAWING