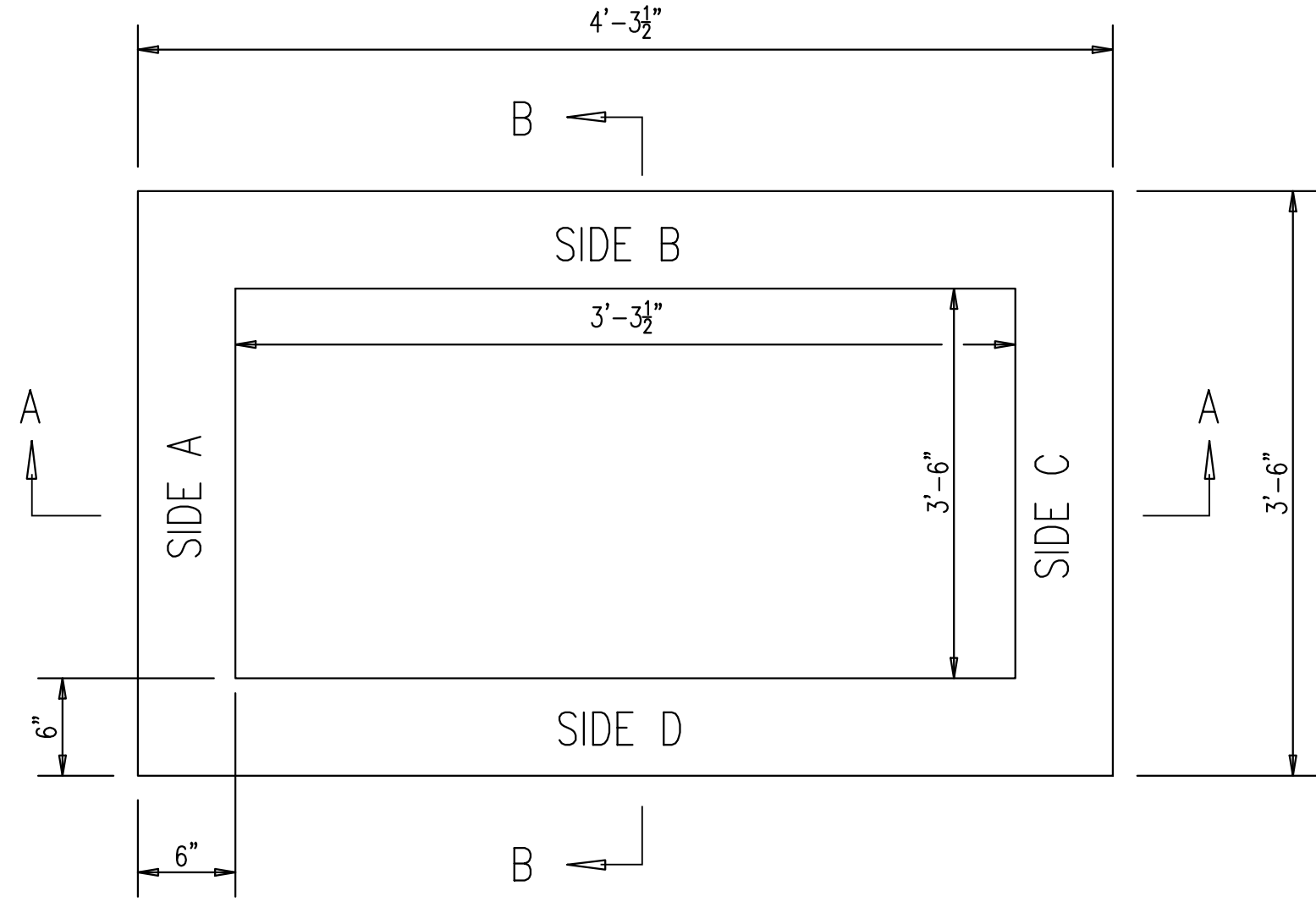
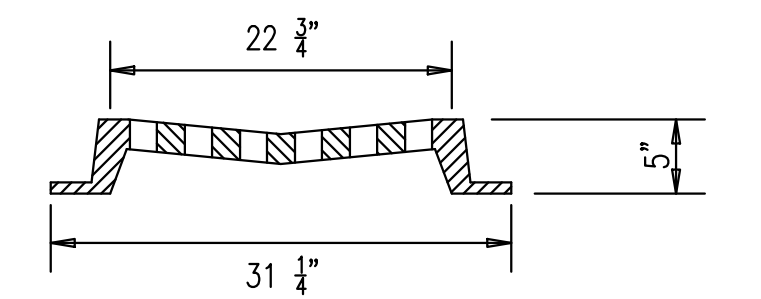
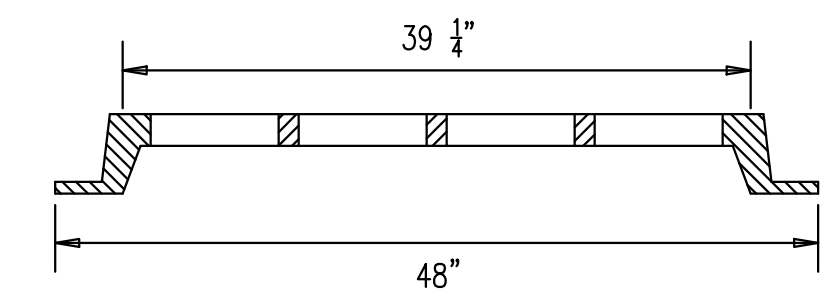
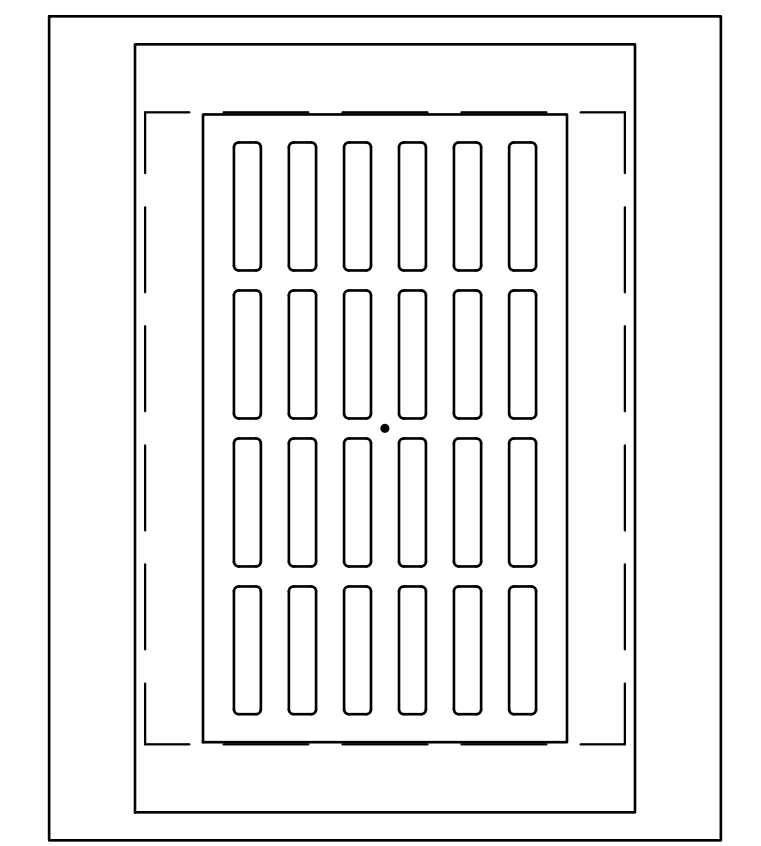
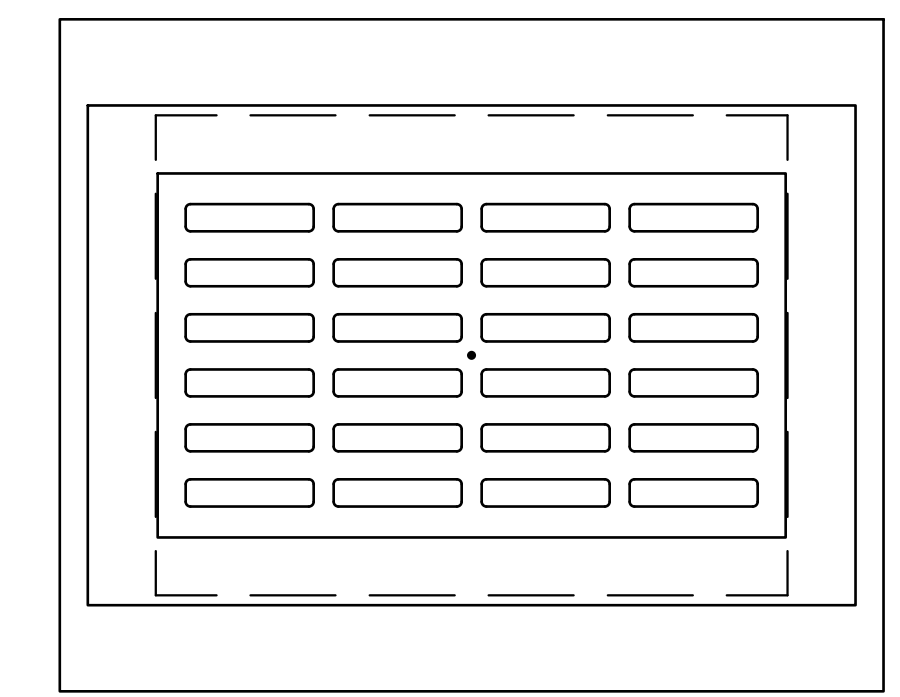


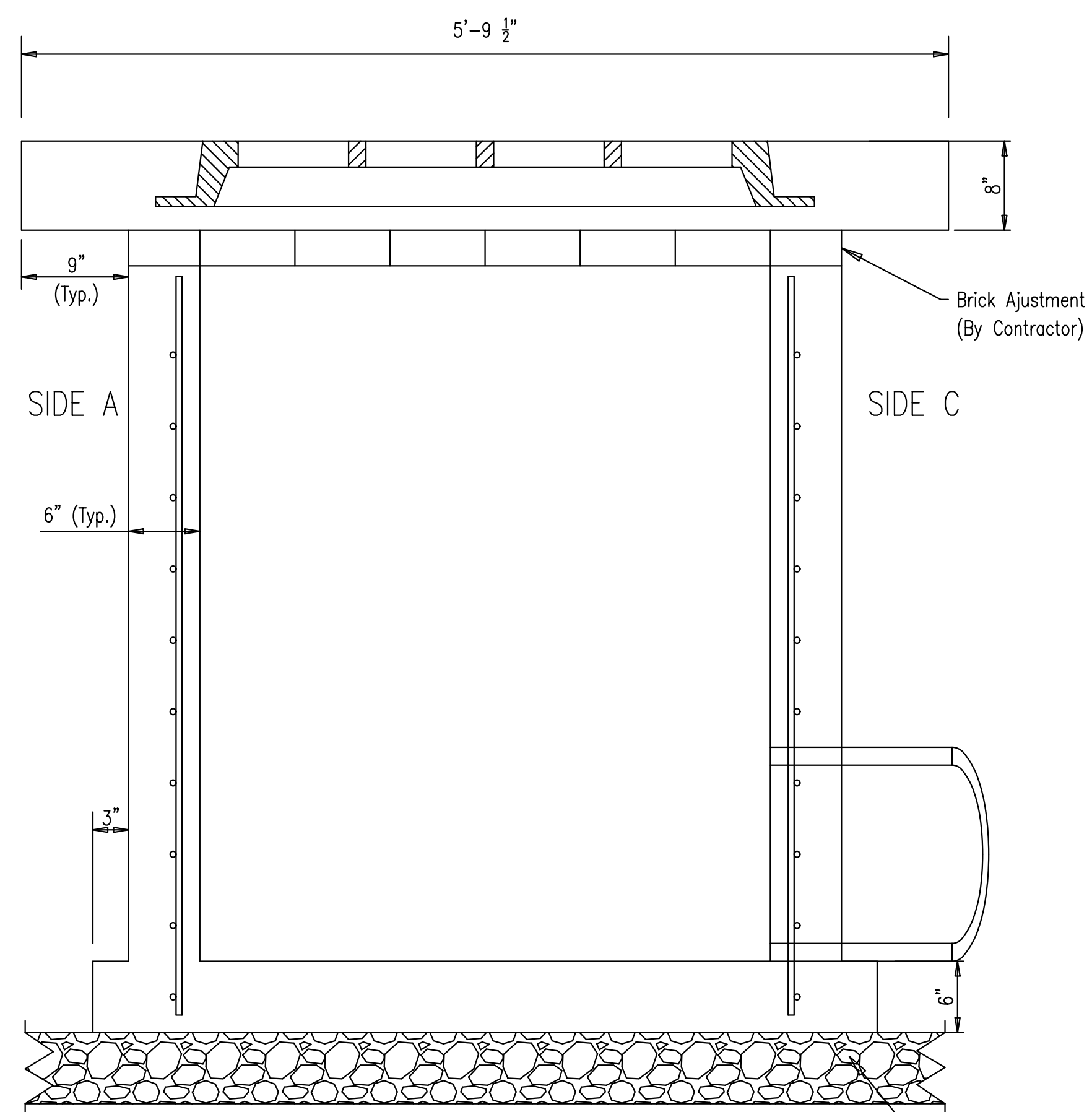
TOP VIEW



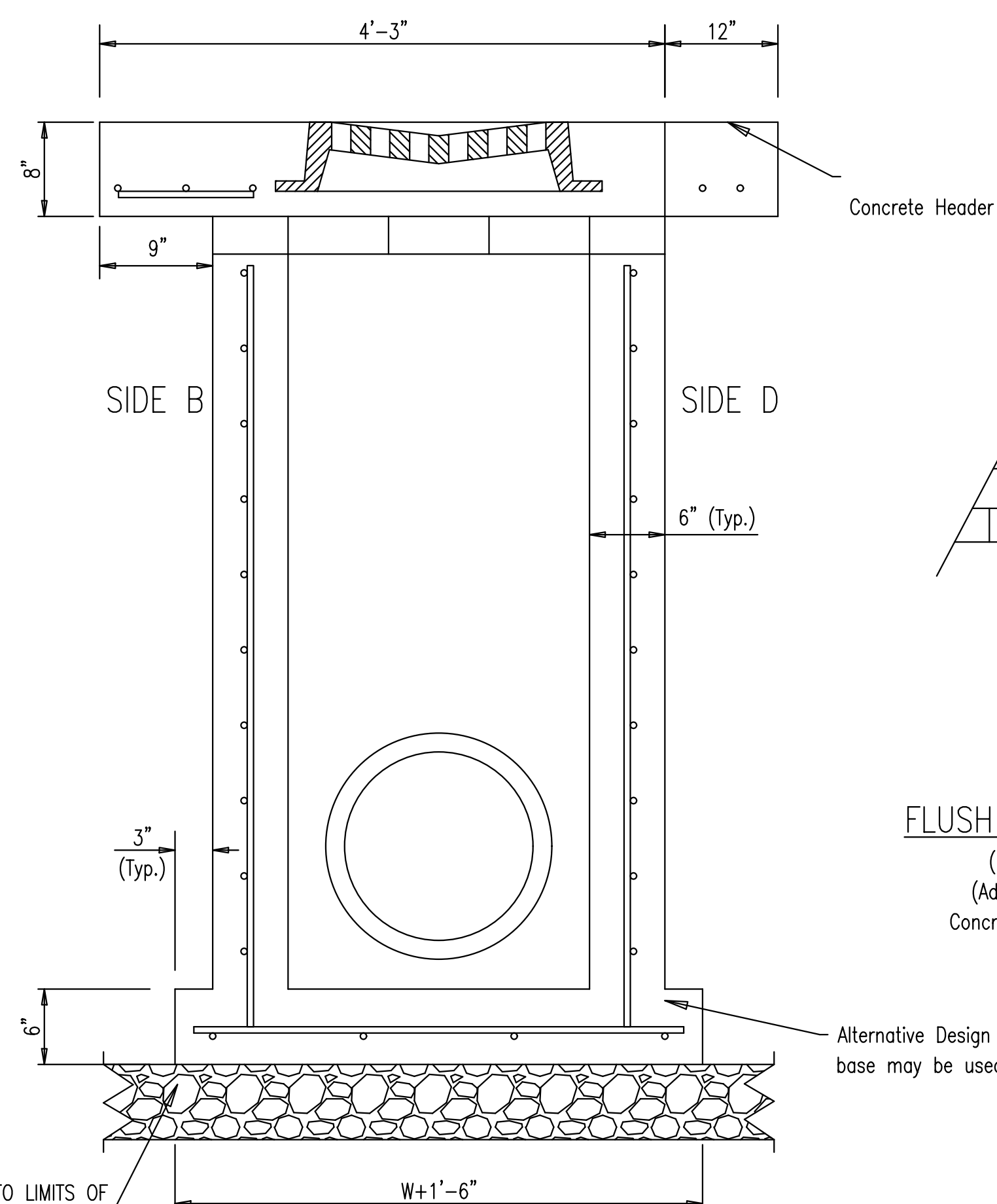
TOP VIEW



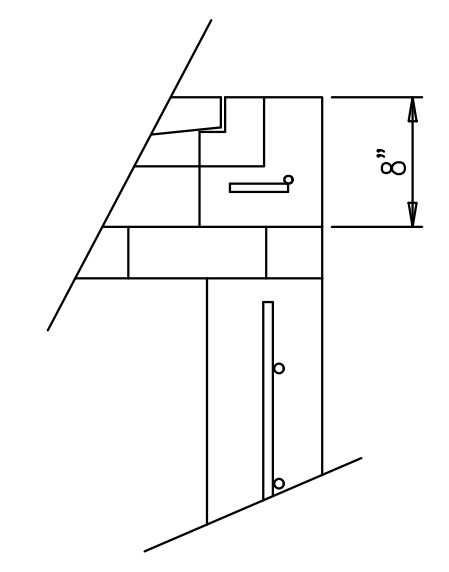
DEETER 2501 CATCH BASIN INLET GRATE & FRAME



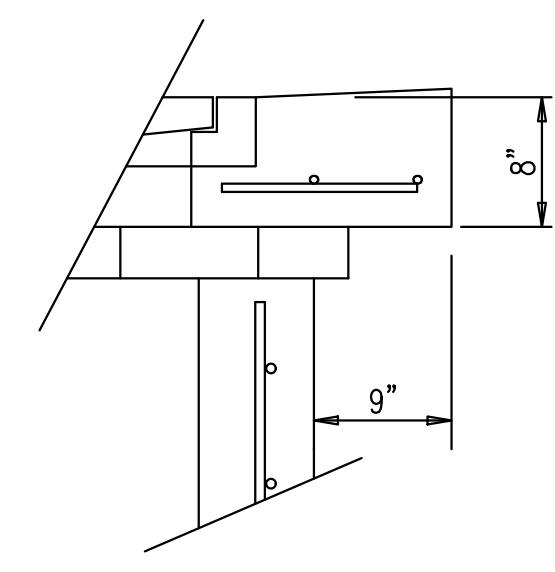
FRONT VIEW (SECTION A-A)



SIDE VIEW (SECTION B-B)



FLUSH STYLE TOP
(Side B)
(Adjacent to Concrete Header)



9" APRON
(Side A,C,D)
(Brick Areas)

GENERAL NOTES

1. GRATE FRAME TO BE INSTALLED ON THIN MORTAR CUSHION TO INSURE FULL SUPPORT ALONG BRICK. CONCRETE USED FOR INLET CONSTRUCTION SHALL CONFORM TO CITY OF WICHITA SPECIFICATIONS FOR CONCRETE PAVEMENT MIX.
2. INLET INVERT SHALL BE SHAPED WITH 8 SACK SAND MIX CONCRETE TO CREATE FLOW CHANNELS AND TO INCREASE HYDRAULIC EFFICIENCY SUCH THAT THE INLET WILL BE SELF CLEANING BETWEEN ALL INLET AND/OR OUTLET PIPES.
3. THE ENDS OF ALL PIPES INSTALLED IN INLETS SHALL BE CUT OFF FLUSH WITH THE INSIDE FACE OF THE INLET WALL.
4. INLET FRAME AND GRATE TO BE DEETER #2501, OR APPROVED EQUAL.

REVISED: MARCH 2015



SPECIAL DROP INLET		
CITY ENGINEER PAUL GUNZELMAN, P.E.		
PROJECT NUMBER 472-2021	OCA NUMBER	DATE 2/21/2024
CITY ENGINEER'S OFFICE CITY HALL - SEVENTH FLOOR 455 NORTH MAIN STREET WICHITA, KANSAS 67202-1620 (316) 268-4501		SHEET 45 of 163