

CONSULTANTS:

COMMERCE STREET & ST. FRANCIS AVENUE IMPROVEMENTS FROM WATERMAN TO KELLOGG

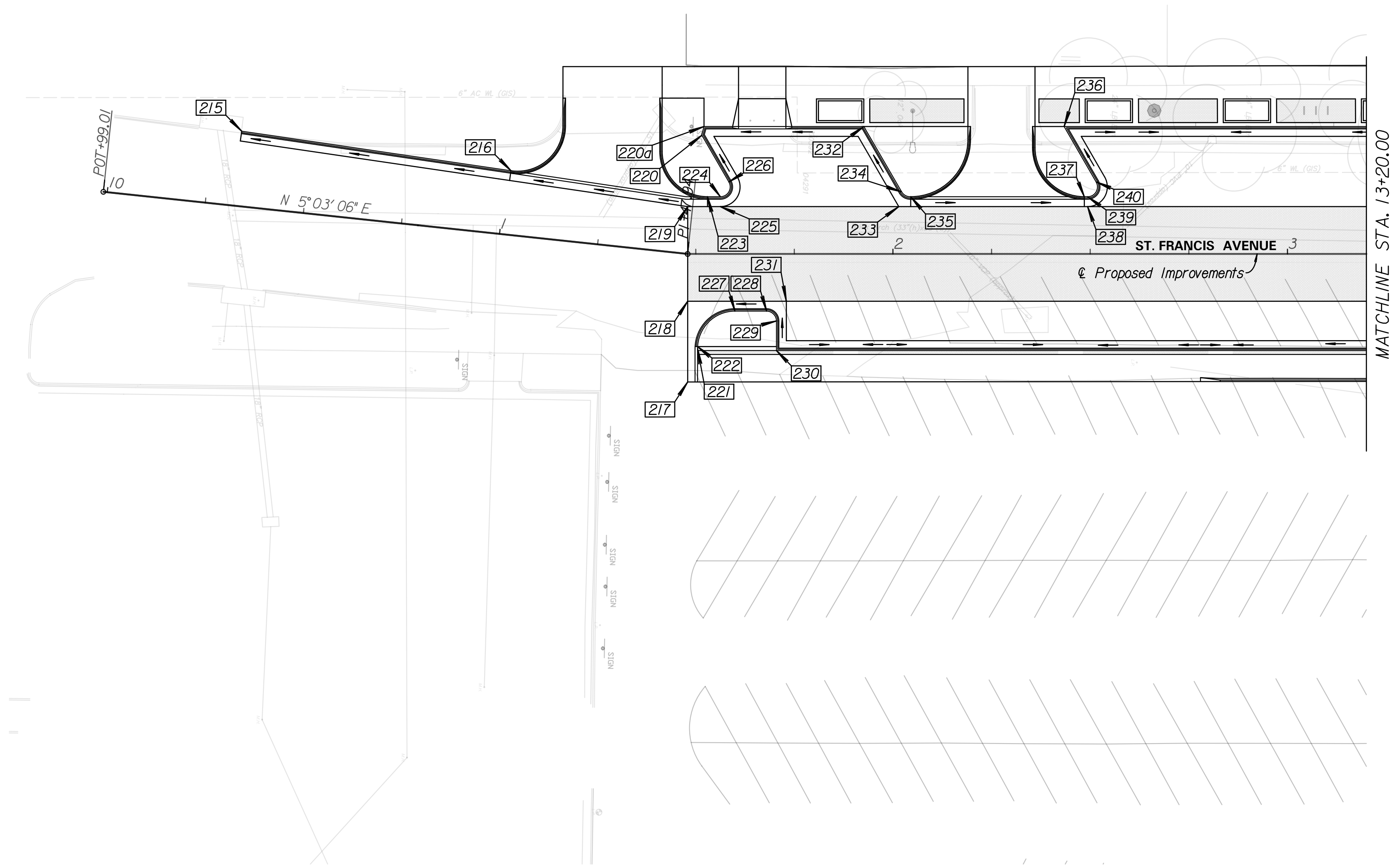


REVISIONS:	MARK	DATE	DESCRIPTION

PROJ NO: 472-2021
 SCALE: 1"=20'
 DATE: 2/21/2024
 DESIGNED BY: MLC
 DRAWN BY: LCV
 CHECKED BY: MDB

SHEET TITLE:
ST. FRANCIS AVENUE GEOMETRIC LAYOUT DETAILS

SHEET NO.
65
 SHEET 65 OF 163



STATION	OFFSET	DESCRIPTION
215	10+32.26 18.99' Lt.	Begin Curb & Gutter (6") (BOC); Match Existing
216	11+01.20 16.24' Lt.	Begin 11.5' Radius (BOC)
217	11+47.94 32.48' Rt.	Corner Point (E.O.P); Match Existing
218	11+47.94 12.00' Rt.	Edge of Brick Pavers on 7" Concrete Pavement; Match Existing
219	11+46.67 11.93' Lt.	Edge of Brick Pavers on 7" Concrete Pavement; Match Existing
220	11+51.52 30.17' Lt.	Corner Point (BOC)
220a	11+52.10 32.33' Lt.	Corner Point (BOC)
221	11+50.44 24.00' Rt.	Begin 9.5' Radius (BOC)
222	11+50.46 23.50' Rt.	Begin Type I Curb & Gutter (6")
223	11+52.99 14.50' Lt.	End 11.5' Radius (BOC)
224	11+56.23 14.50' Lt.	Begin 2.5' Radius (BOC)
225	11+56.23 12.00' Lt.	Begin 7" Concrete Pavement (Reinforced)
226	11+58.40 18.25' Lt.	End 2.5' Radius (BOC)
227	11+59.94 14.50' Rt.	End 9.5' Radius (BOC)
228	11+67.95 14.50' Rt.	Begin 2.5' Radius (BOC)
229	11+70.45 17.00' Rt.	End 2.5' Radius (BOC)
230	11+70.45 24.50' Rt.	Corner Point (BOC)
231	11+72.95 12.00' Rt.	Begin 7" Concrete Pavement (Reinforced)
232	11+92.61 32.33' Lt.	Corner Point (BOC)
233	12+01.46 12.00' Lt.	End 7" Concrete Pavement (Reinforced)
234	12+02.18 15.75' Lt.	Begin 2.5' Radius (BOC)
235	12+04.50 14.50' Lt.	End 2.5' Radius (BOC); Begin 14.5' Radius (BOC)
236	12+43.38 32.33' Lt.	Corner Point (BOC)
237	12+48.50 14.50' Lt.	End 12.5' Radius (BOC)
238	12+49.34 12.00' Lt.	Begin 7" Concrete Pavement (Reinforced)
239	12+49.34 14.50' Lt.	Begin 2.5' Radius (BOC)
240	12+51.50 18.25' Lt.	End 2.5' Radius (BOC)

IF THIS DRAWING IS LESS THAN 22" X 36" IT IS A REDUCED SIZE DRAWING