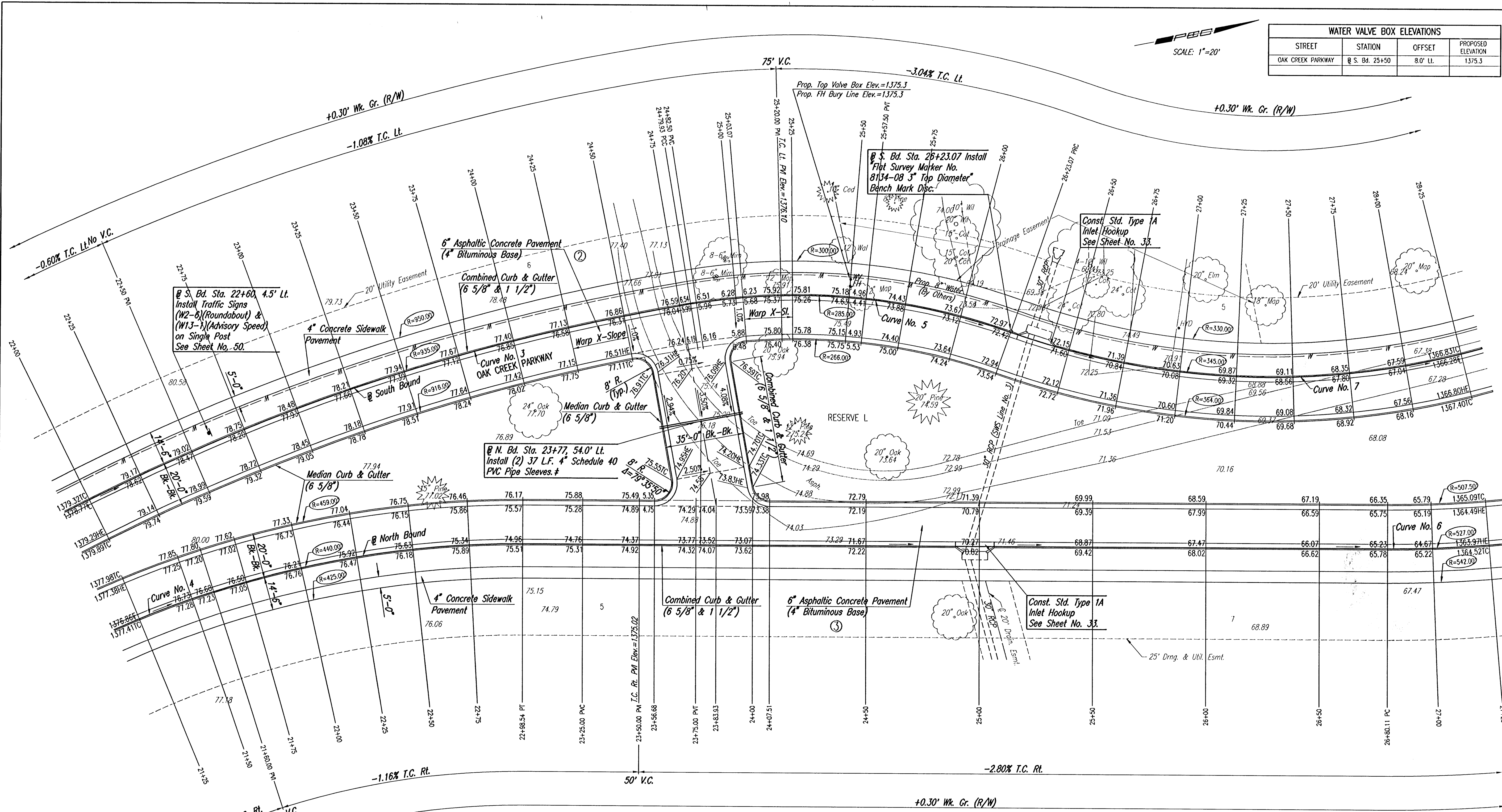


WATER VALVE BOX ELEVATIONS			
STREET	STATION	OFFSET	PROPOSED ELEVATION
OAK CREEK PARKWAY	@ S. Bd. 25+50	8.0' Lt.	1375.3

PBB
SCALE: 1"=20'



@ S. Bd. Sta. 22+60, 4.5' Lt.
Install Traffic Signs
(W2-8)(Roundabout) &
(W13-1)(Advisory Speed)
on Single Post
See Sheet No. 50.

@ N. Bd. Sta. 23+77, 54.0' Lt.
Install (2) 37 L.F. 4" Schedule 40
PVC Pipe Sleeves. #

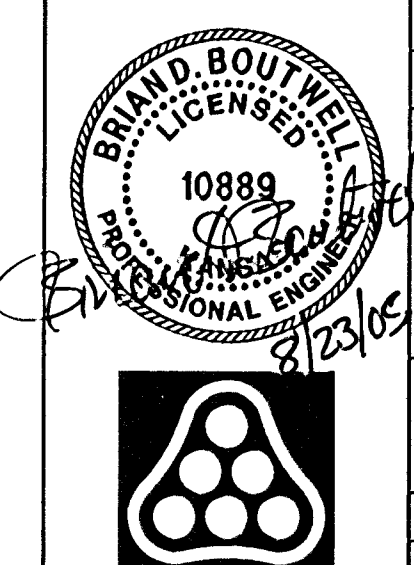
@ S. Bd. Sta. 26+23.07 Install
Flht Survey Marker No.
8134-08 3" Top Diameter
Bench Mark Disc.

Const. Std. Type IA
Inlet Hookup
See Sheet No. 33.

Const. Std. Type IA
Inlet Hookup
See Sheet No. 33.

Sleeves to be 42" below top of curb.
Each end of 4" PVC pipe sleeves shall be capped
and marked with steel "T" posts or 2" dia.
steel pipe a maximum of 12" above finished
grade. Pipe, caps, markers, and installation
thereof shall be Subsidiary to Median Comb. Curb
& Gutter (6 5/8").

DSNR: BLB OPER: BUS SCALE: 1"=20.00
 Q:\2004\04688\000\04688-000-C-S1R22-28 08-24-2005 12:23:13 am



No.	Revision	By	Date
	OAK CREEK - PHASE 1		
OAK CREEK PARKWAY			
@ N. Bd. STA. 22+00 TO STA. 27+25 @ S. Bd. STA 22+25 TO STA. 28+25			
JAMES L. ARMOUR, P.E. - CITY ENGINEER CITY OF WICHITA PROJECT NO. 472-84209			
Professional Engineering Consultants, P.A.			
303 S. TOPEKA • WICHITA, KANSAS 67202 316-262-2691 • FAX 316-262-3003			
Designed by	BDB, BLB	Job No.	35-04688-000
Drawn by	BJS	Date	October 2004
		Sheet	8 of 86