

STATE OF KANSAS
DEPARTMENT OF TRANSPORTATION



PLAN AND PROFILE OF PROPOSED
EASTERN STREET BRIDGE OVER GYPSUM CREEK

FEDERAL AID PROJECT
CITY OF WICHITA PROJECT NO. 472-83067
INDEX CODE 715673
WICHITA, SEDGWICK COUNTY

FHWA REG NO.	STATE	PROJECT NO.	YEAR	SHEET NO.	TOTAL SHEETS
7	KANSAS	87 N-0088-01	1999	1	38

FEDERAL AID NO. BRO-N008 (801)

GRADING
BRIDGE
SEEDING
SIGNING

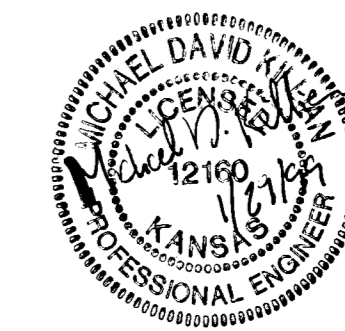
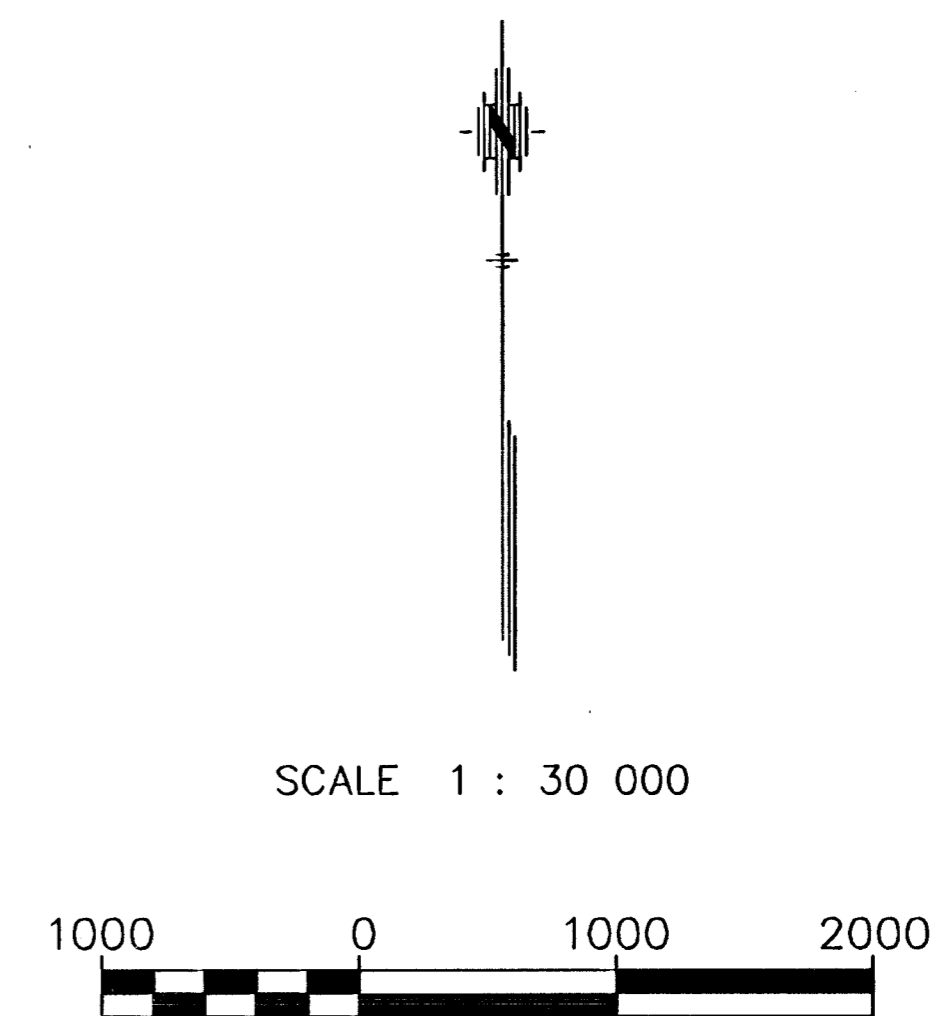
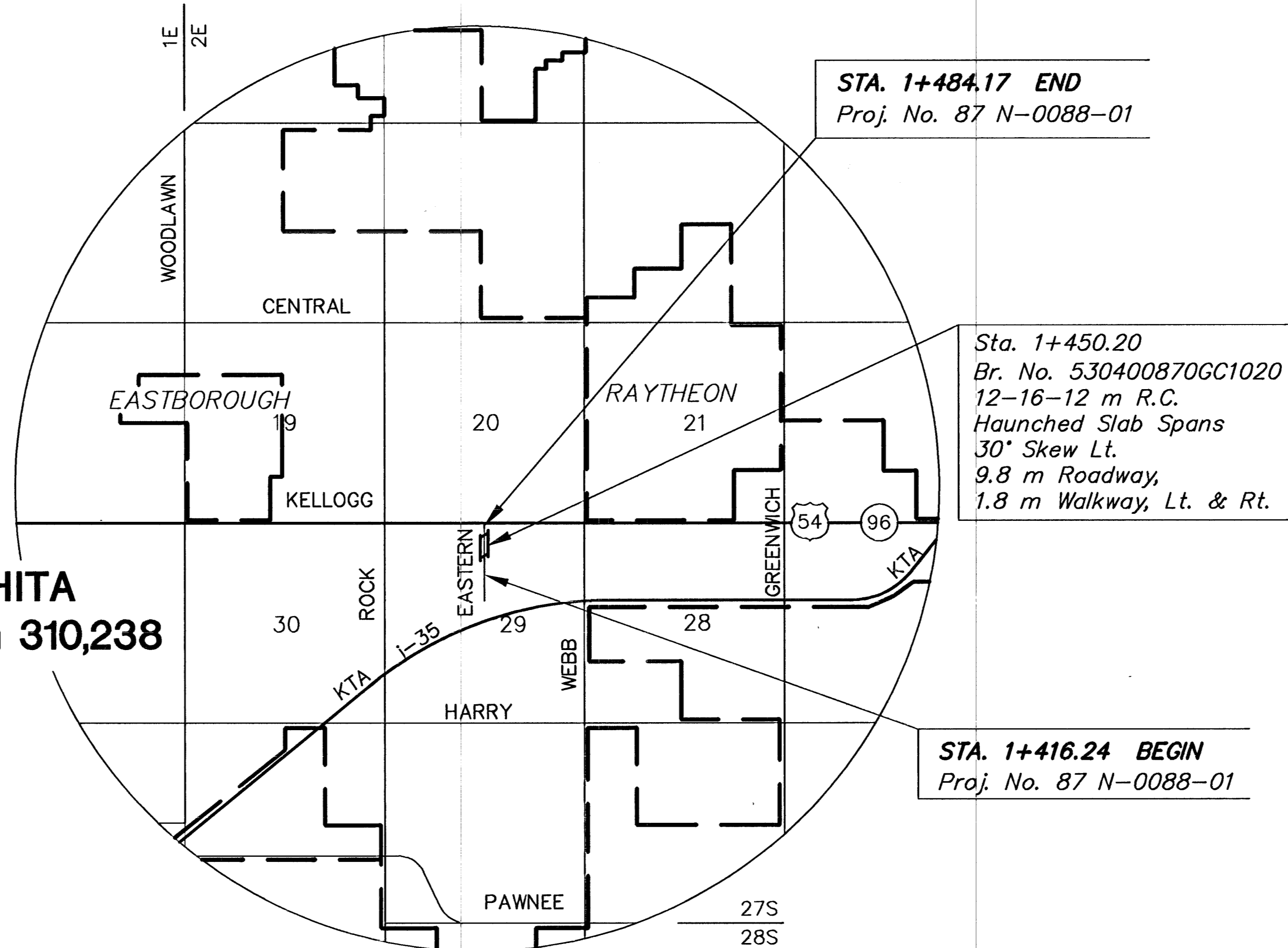
INDEX OF SHEETS

SHEET NO.	DESCRIPTION
1	Title Sheet
2	Typical Section
3	Plan and Profile
4-7	Pavement Details
8	Bridge Quantities & Notes
9	Contour Map
10	Construction Layout
11-19	Bridge Details
20	Standard Pile Details
21	Bridge Excavation
22	Supports and Spacers
23	Summary of Quantities
24-28	Temporary Project Water Pollution Control
29	Seeding
30-31	Signing
32-37	Traffic Control
38	Cross Sections

DESIGN DESIGNATION

AADT (1995)	=	400
AADT (2015)	=	530
DHV	=	80
D	=	60%
T	=	1%
V	=	50 km/h
Control of Access	=	NONE
Clear Zone	=	1.8 m

WICHITA
Population 310,238



PREPARED & SUBMITTED BY
MID-KANSAS ENGINEERING CONSULTANTS, INC.
WICHITA, KANSAS

All Dimensions shown, without a
SI suffix, are in millimeters. All
elevations shown are in meters.



NOTE: This project falls within the
purview of a nation wide permit
authorized under Federal Regulations
33 CFR Part 330 published in the
December 13, 1996 Federal Register.

APPROVED - DATE

MICHAEL E. LINDEBAK
CITY ENGINEER
PROJECT NO.

RECOM. FOR APPROVAL-DATE

CHIEF, BUREAU OF LOCAL PROJECTS
KANSAS DEPARTMENT OF TRANSPORTATION

APPROVED - DATE

STATE TRANSPORTATION ENGINEER
KANSAS DEPARTMENT OF TRANSPORTATION

CONVENTIONAL SIGNS	
COUNTY LINE	-----
CITY LIMITS	-----
STATE OR NATIONAL LINE	-----
TOWNSHIP, SECTION or GRANT LINE	-----
PROPERTY LINE	-----
HIGHWAY FENCE	-----
EXISTING FENCE	-----
GUARD FENCE	-----
CONSTRUCTION LIMITS	-----
RIGHT OF WAY LINE	-----
TRAVELED WAY	-----
RAILROADS	-----
CENTER LINE OF PROJECT	-----
TERRACE	-----
CULVERTS	-----
DROP INLET & STORM SEWER	-----
ACCESS CONTROL	-----
POWER POLE	-----
TELEPHONE POLE	-----
MARSH	-----
HEDGE	-----
TREES	-----
PROFILE ELEVATION	-----
STREAM or CREEK	-----

GROSS LENGTH OF PROJECT	67.930 m
EXCEPTIONS	0.000 m
NET LENGTH OF PROJECT	67.930 m
NET LENGTH OF BRIDGES	40.866 m
NET LENGTH OF ROAD	27.064 m