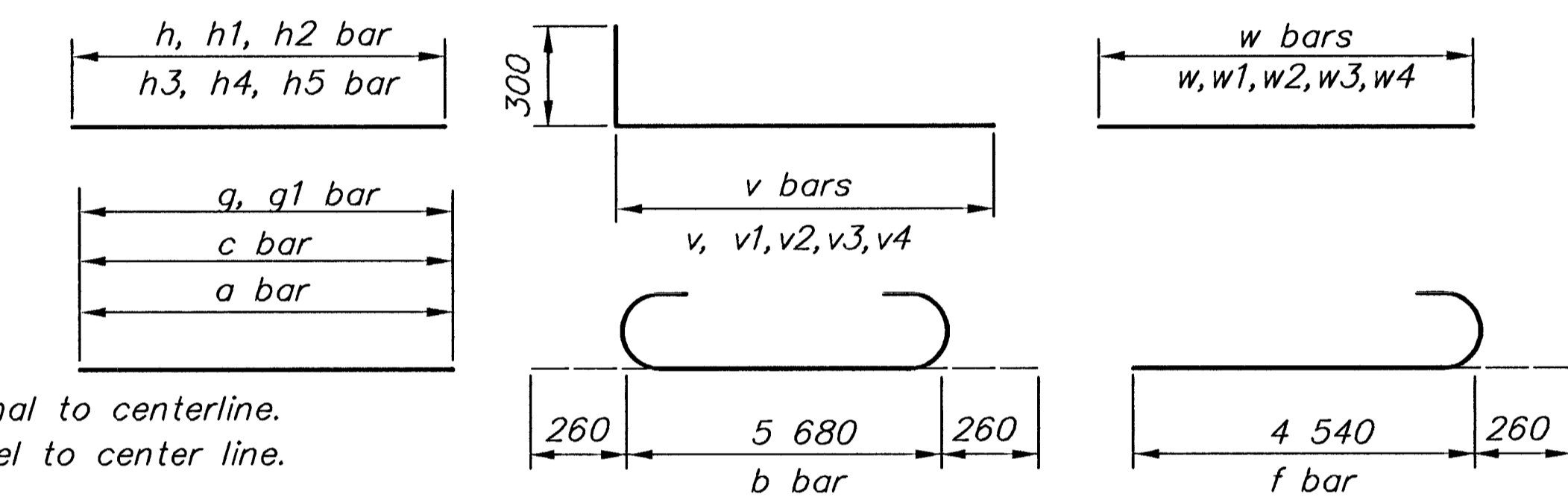
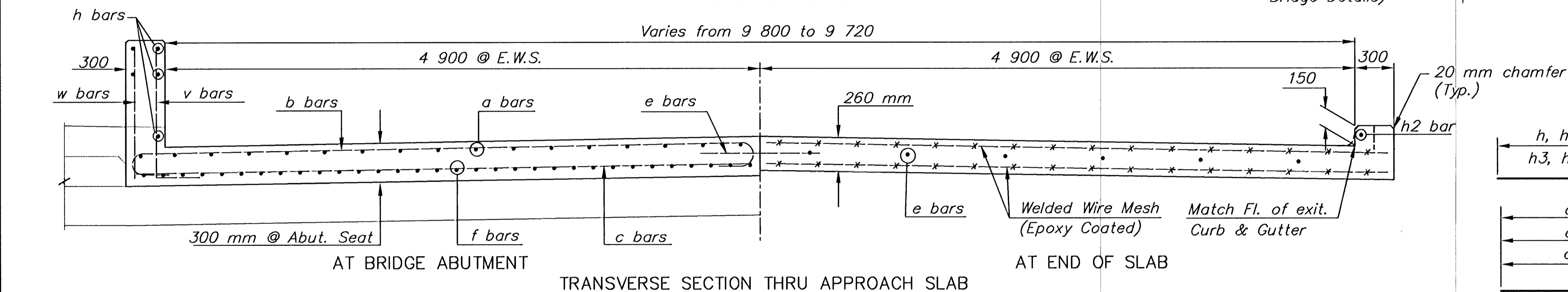


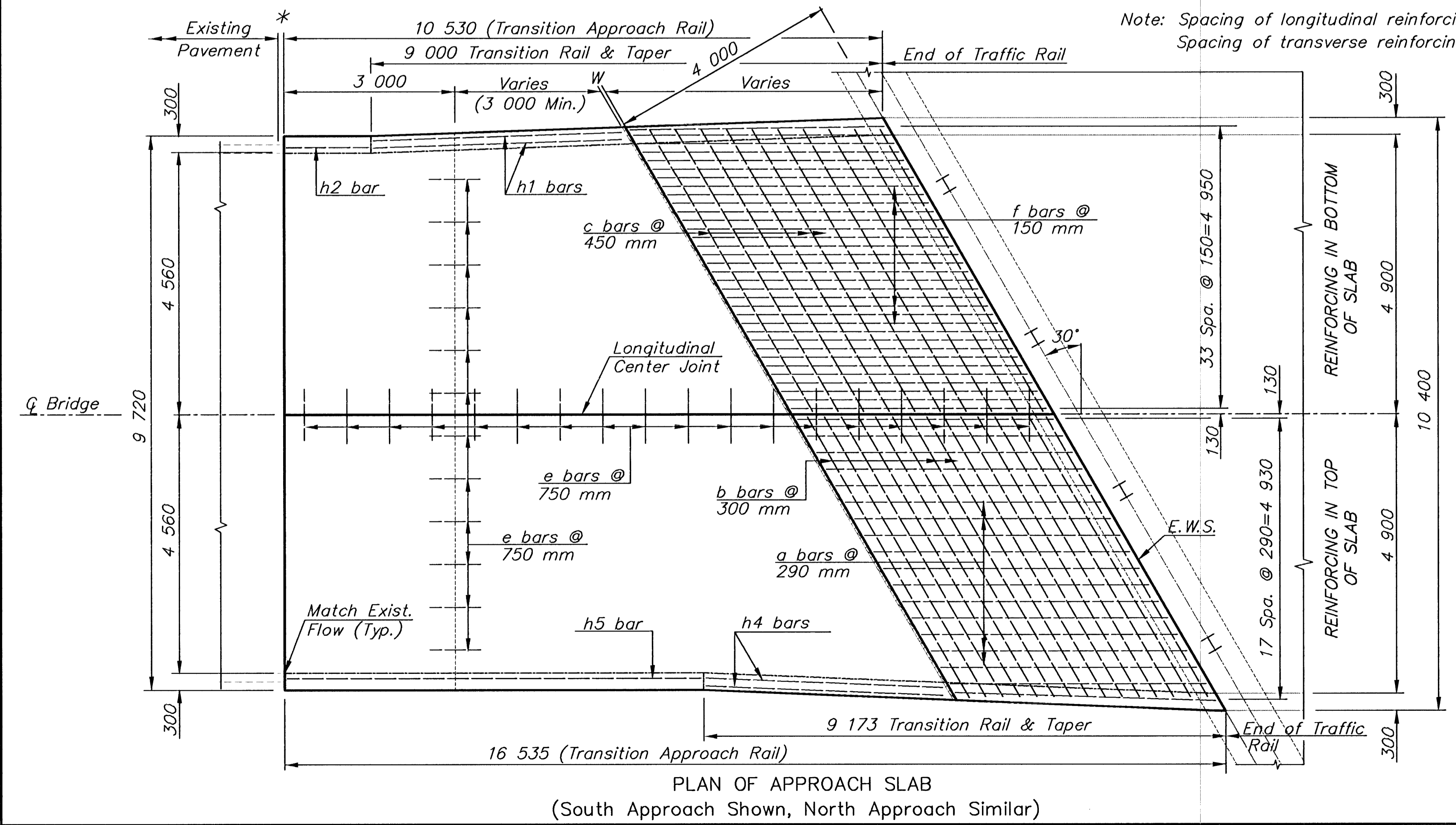
* 100 mm Pressure Relief Joint. See Std. RD661SI.
W Expansion Joint. See Std. RD662SI.
F Contractor has the option of substituting a Tied Keyed Construction Joint.

GENERAL NOTES

Special Concrete Bridge Approach shall be paid for as sq. m of Concrete Pavement (260 mm Unif.)(AE) and includes all work and materials required to construct the approach slab as shown on this sheet.
All work and materials required for installation of expansion joints and pressure relief joints shall be subsidiary to Concrete Pavement (260 mm Unif.)(AE).
Transition Approach Rail shall be paid as "Concrete Safety Barrier (Special)(AE)."
All preformed joint material shall be installed perpendicular to pavement surface. Formed joints shall be edged with 6 mm radius tool for length of joint.
At the Contractor's option #13 x 900 mm tie bars @ 380 centers may be substituted for the #19 e bars at 750 mm centers.
Clearance from the face of concrete for all reinforcing steel shall be 50 mm.
Standard reinforcing bar hooks in accordance with the latest ACI specifications shall be used throughout.



BENDING DIAGRAM
All dimensions are out to out unless otherwise noted.
All bars are epoxy coated



Note: Spacing of longitudinal reinforcing bars is normal to centerline.
Spacing of transverse reinforcing bars is parallel to center line.

| 30° SKEW BILL OF MATERIALS | | | | | | | | | | | |
|---|-------|-------|-------|-----|-------|-------|-------|-------|-------|-------|-------------|
| Bar Schedule | | | | | | | | | | | |
| Bar No. | a | b | c | e | f | h | h1 | h2 | h3 | h4 | h5 |
| Size | 16 | 16 | 16 | 19 | 19 | 16 | 16 | 16 | 16 | 16 | 16 |
| Length | 4 540 | 6 200 | 5 680 | 900 | 4 800 | 4 260 | 4 490 | 1 430 | 4 630 | 4 200 | 7 260 |
| Bar No. | v | v1 | v2 | v3 | v4 | w | w1 | w2 | w3 | w4 | |
| Size | 13 | 13 | 13 | 13 | 13 | 13 | 13 | 13 | 13 | 13 | |
| Length | 1 220 | 1 130 | 1 040 | 975 | 900 | 920 | 830 | 740 | 675 | 600 | |
| Reinforcing Steel | | | | | | | | | | | 1,730 kg |
| Concrete Pavement (260 mm Unif.)(AE) | | | | | | | | | | | 134.5 sq. m |
| Expansion Joint | | | | | | | | | | | 11.6 m |
| 100 mm Pressure Relief Joint | | | | | | | | | | | 9.4 m |
| Concrete Safety Barrier (300 mm)(Special)(AE) | | | | | | | | | | | 27.07 m |

Note: Quantities listed for one approach slab only. Two required per bridge.

Reinforcing steel, joint lengths and Concrete Safety Barrier shown for information only.

| | | | | |
|--|------|-------------|----------|----------|
| NO. | DATE | REVISIONS | BY | APP'D |
| 2 | | | | |
| 1 | | | | |
| KANSAS DEPARTMENT OF TRANSPORTATION | | | | |
| BR. NO. 530400870CC1020 STA. 1+450.20 | | | | |
| APPROACH SLAB & TRANSITION RAIL | | | | |
| (Eastern Street over Gypsum Creek) | | | | |
| PROJ. NO. 87 N-0088-01 SEDGWICK CO. | | | | |
| MID-KANSAS ENGINEERING CONSULTANTS, INC. | | | | |
| WICHITA, KANSAS | | | | |
| DESIGNED BY: | PAF | CHECKED BY: | MDK | |
| DRAWN BY: | DPG | DATE: | 11-19-98 | SHEET OF |