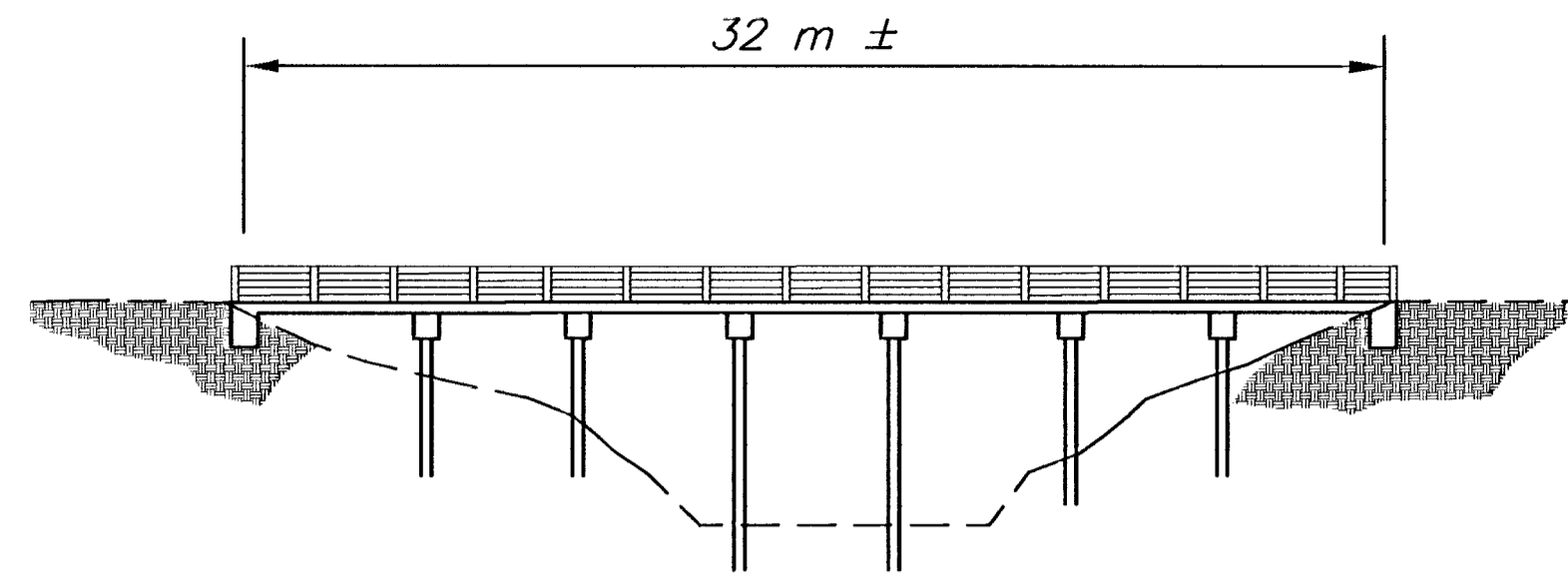


FHWA REG. NO.	STATE	PROJECT NO.	YEAR	SHEET NO.	TOTAL SHEETS
7	KANSAS	87 N-0088-01	1999	9	38

DATE	
BY	
REFERENCES NOTED	
REFERENCES CHECKED	



Total Waterway = 85.468 sq. m

EXISTING BRIDGE OPENING

- 7 Spans @ 4.6 m
- Timber Stringer
- Timber Pile
- 7.3 m Roadway, 915 mm Walkway Lt.

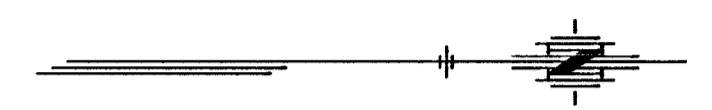
- P.O.T. @ Sta. 1+304.799
- Cut "V" Notch in pavement
N 304 800.00
E 304 800.00
 - "X" cut in top of curb
 - 3-60d nails on NW face of Power Pole
 - "X" cut on sidewalk

- 9.205 m SSW
- 22.519 m SE
- 9.205 m E

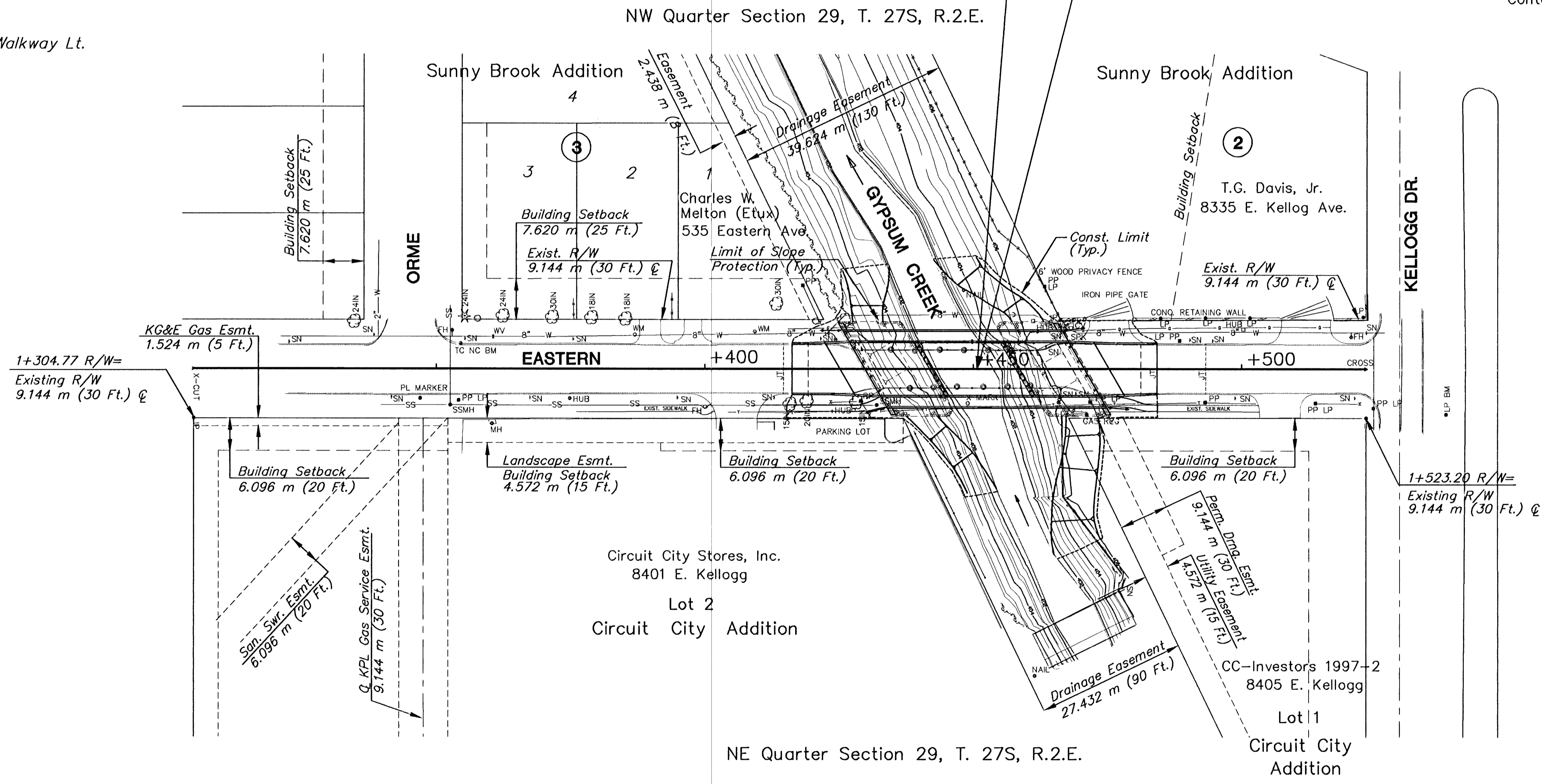
- P.O.T. @ Sta. 1+523.234
- Cut "X" in pavement
N 523 234.92
E 304 800.00
 - Top center of Fire Hydrant 6.538 m SW
 - 3-60d nails in NW face of Power Pole 11.018 m NW
 - 3-60d nails in W. face of Power Pole 7.163 m E

Sta. 1+450.20 Remove
Br. No. 530400870GC1020
7 @ 4.6 m Timber Stringer
7.3 m Roadway with
915 mm Walkway, Lt.

Sta. 1+450.20 Construct
Br. No. 530400870GC1020
12-16-12 m R. C.
Haunched Slab Spans, 30° Skew Lt.
9.8 m Roadway with
1.8 m Walkway, Lt. & Rt.



SCALE 1:500
Contour Interval = .5 m



UTILITIES

- City of Wichita Water/Sewer
8th Floor - City Hall
455 N. Main
Wichita, Ks. 67202
Bill Perkins (316) 268-4555
- Kansas Gas & Electric
1900 E. Central, Box 208
Wichita, Ks. 67214
Russ Chitwood (316) 261-6251
- Southwestern Bell Telephone Co.
154 N. Broadway
Wichita, Ks. 67202
Greg Sharpe (313) 268-2245
- Cablevision
701 East Douglas
Wichita, Ks. 67202
Don Sue (316) 262-4270

NO.	DATE	REVISIONS	BY	APP'D
2				
1				

KANSAS DEPARTMENT OF TRANSPORTATION
BR. NO. 530400870GC1020 STA. 1+450.20
CONTOUR MAP
(Eastern over Gypsum Creek)
PROJ. NO. 87 N-0088-01 SEDGWICK CO.

FHWA APPROVAL	DESIGNED - K.S. PAF	APP'D	QUANTITIES
DESIGN CK. MDK	DETAIL CK. MDK	QUAN. CK. MDK	CADD CK.