

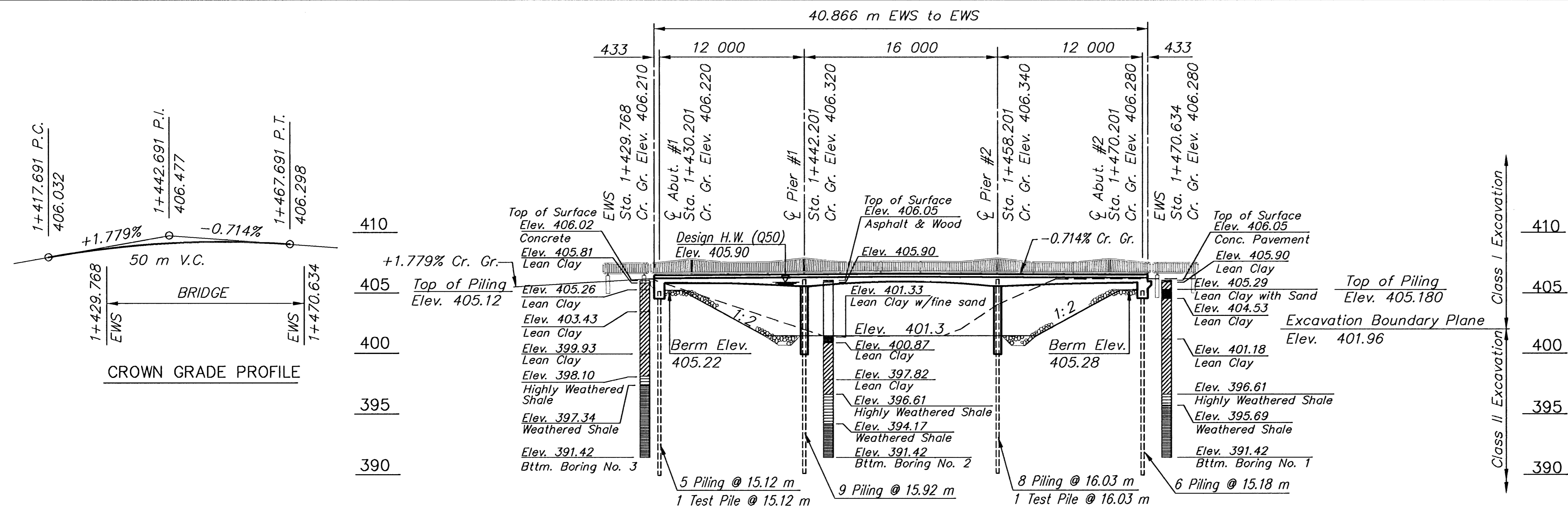
FHWA REG. NO.	STATE	PROJECT NO.	YEAR	SHEET NO.	TOTAL SHEETS
7	KANSAS	87 N-0088-01	1999	10	38

DRAINAGE DATA

Drainage Area	22.5	km ²
Design Frequency	50	years
Design Discharge (Q 50)	145.8	m ³ /s
Design Highwater Elevation	405.9	
Design Backwater	0.1	m
Design Backwater Elevation	405.0	
Overtopping Elevation (Sta. 1+365)	405.25	
Overtopping Discharge	160	m ³ /s
Overtopping Frequency	65	years
Discharge at Q 100	173.0	m ³ /s
Backwater at Q 100	0.51	m
Backwater Elevation at Q 100	406.3	
Total Waterway Provided	105.2	m ²
Design Waterway Provided	98.1	m ²
Average Design Velocity (Q 50)	1.37	m/s

The thermal movement at the abutment is ± 5 mm.
"W" = 25 mm

DATE	BY



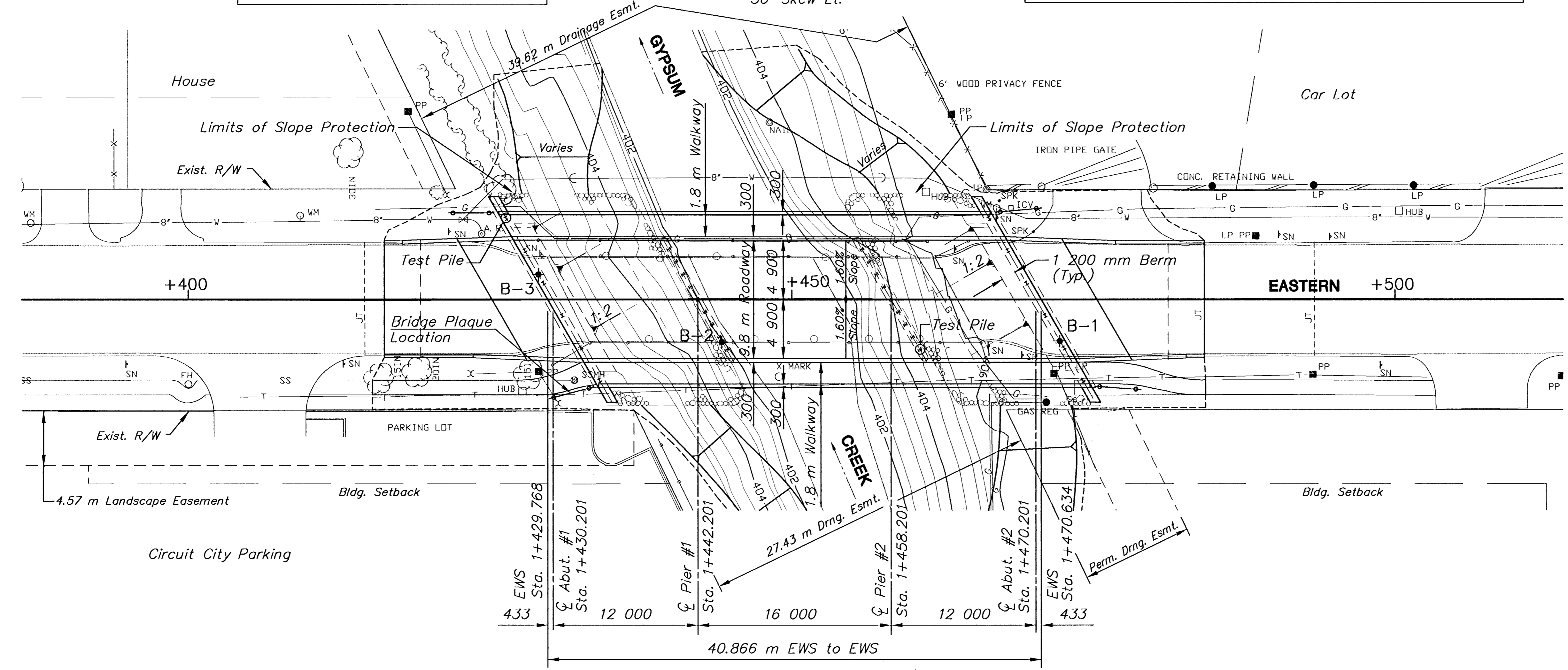
BM#1 ['] NW Return N. End Orme & Eastern St.
Sta. 1+354.50 Elev. 405.268

ELEVATION
12-16-12 m R.C. Haunched Slab
Pile Bent Abutments & Piers
9.8 m Roadway with 1.8 m Walkway Lt. & Rt.
30° Skew Lt.

BM#2 ['] Cut on S. side of L.P. N. side of Kellogg Dr./ E. side of Eastern St.
Sta. 1+538.09, 8.466 m Rt. Elev. 406.161



SCALE: 1:200



NO.	DATE	REVISIONS	BY	APP'D
2				
1				

KANSAS DEPARTMENT OF TRANSPORTATION
BR. NO. 530400870GC1020 STA. 1+450.20
CONSTRUCTION LAYOUT
(Eastern over Gypsum Creek)
PROJ. NO. 87 N-0088-01 SEDGWICK CO.

FHWA APPROVAL	APP'D	11-19-98
DESIGNED KJS, PAF	QUANTITIES	CADD
DESIGN CK. MDX	DETAIL CK. MDX	QUAN. CK. MDX
		CADD CK. CEH