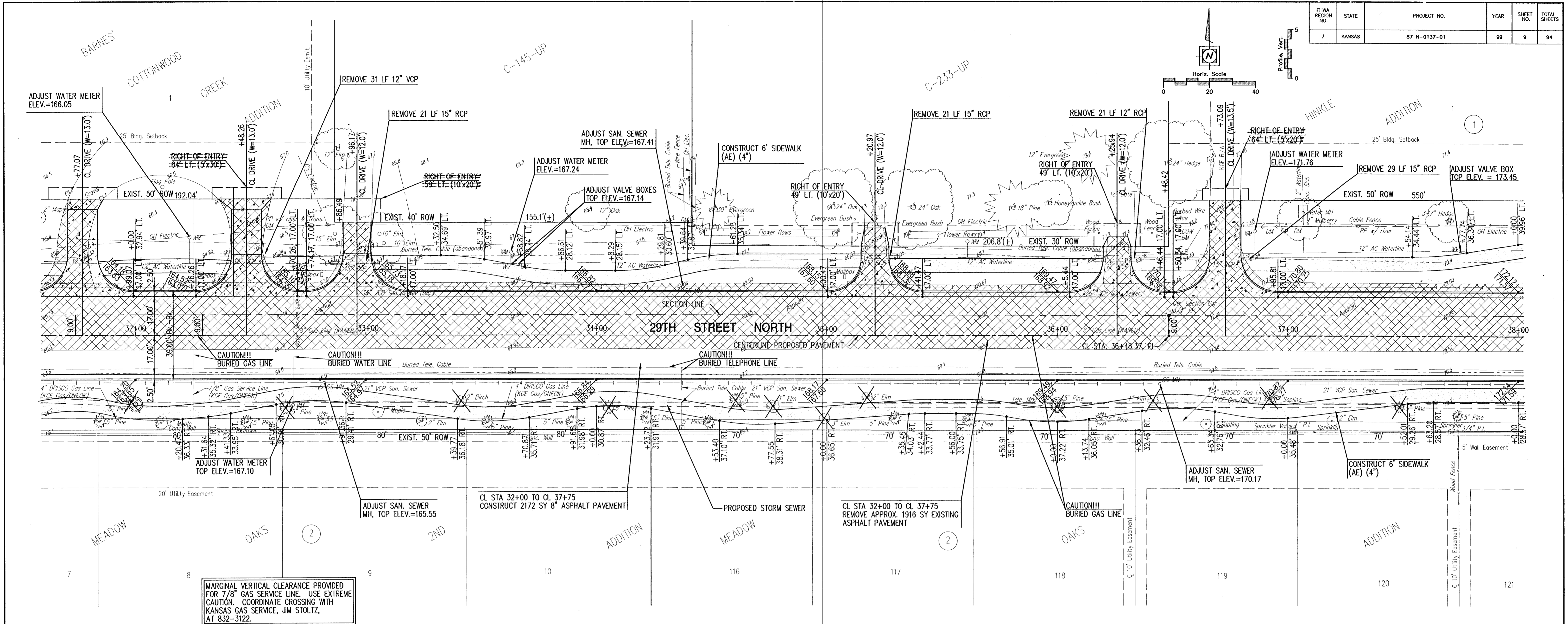
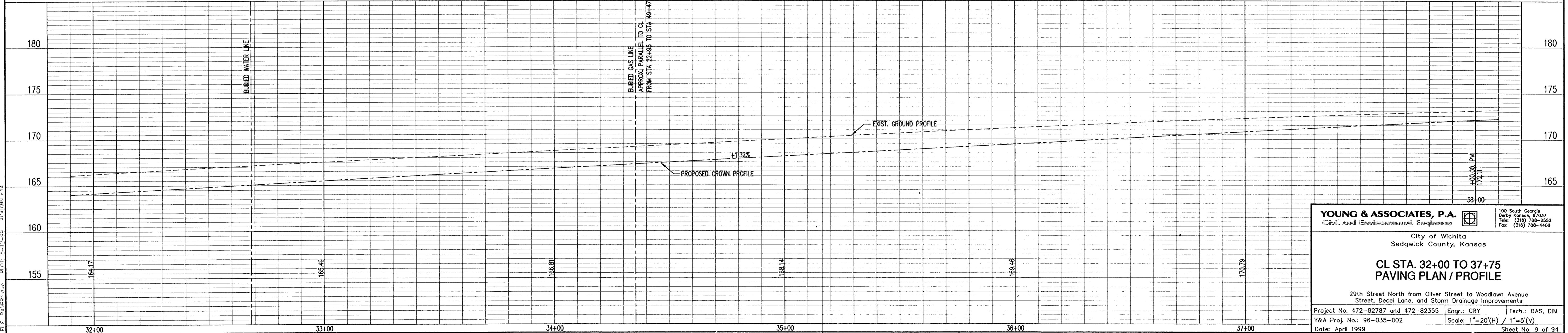


FHWA REGION NO.	STATE	PROJECT NO.	YEAR	SHEET NO.	TOTAL SHEETS
7	KANSAS	87 N-0137-01	99	9	94



MARGINAL VERTICAL CLEARANCE PROVIDED FOR 7/8" GAS SERVICE LINE. USE EXTREME CAUTION. COORDINATE CROSSING WITH KANSAS GAS SERVICE, JIM STOLTZ, AT 832-3122.



YOUNG & ASSOCIATES, P.A.
 Civil and Environmental Engineers
 100 South Georgia
 Olathe, Kansas, 67457
 Tel: (316) 788-2552
 Fax: (316) 788-4408

City of Wichita
 Sedgwick County, Kansas

**CL STA. 32+00 TO 37+75
 PAVING PLAN / PROFILE**

29th Street North from Oliver Street to Woodlawn Avenue
 Street, Decol Lane, and Storm Drainage Improvements

Project No. 472-82787 and 472-82355 Engr.: CRY Tech.: DAS, DIM
 Y&A Proj. No.: 96-035-002 Scale: 1"=20'(H) / 1"=5'(V)
 Date: April 1999 Sheet No. 9 of 94