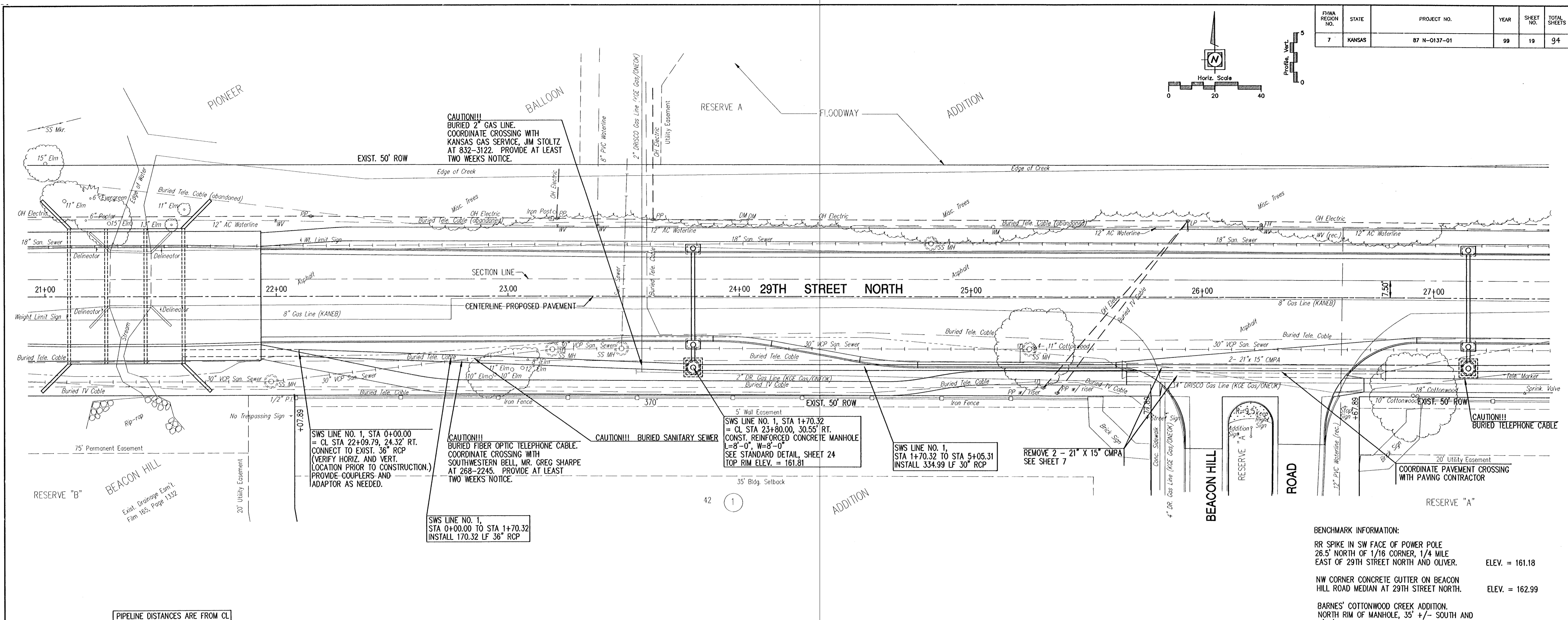
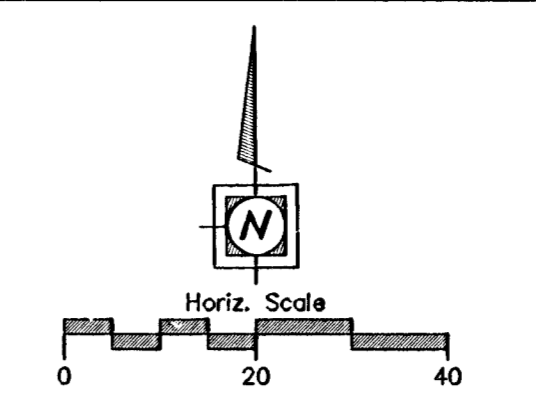


FEMA REGION NO.	STATE	PROJECT NO.	YEAR	SHEET NO.	TOTAL SHEETS
7	KANSAS	87 N-0137-01	99	19	94



SWS LINE NO. 1, STA 0+00.00 = CL STA 22+09.79, 24.32' RT. CONNECT TO EXIST. 36" RCP (VERIFY HORIZ. AND VERT. LOCATION PRIOR TO CONSTRUCTION.) PROVIDE COUPLERS AND ADAPTOR AS NEEDED.

CAUTION!!! BURIED FIBER OPTIC TELEPHONE CABLE. COORDINATE CROSSING WITH SOUTHWESTERN BELL, MR. GREG SHARPE AT 268-2245. PROVIDE AT LEAST TWO WEEKS NOTICE.

CAUTION!!! BURIED SANITARY SEWER. SWS LINE NO. 1, STA 1+70.32 = CL STA 23+80.00, 30.55' RT. CONST. REINFORCED CONCRETE MANHOLE L=8'-0", W=8'-0" SEE STANDARD DETAIL, SHEET 24 TOP RIM ELEV. = 161.81

SWS LINE NO. 1, STA 1+70.32 TO STA 5+05.31 INSTALL 334.99 LF 30" RCP

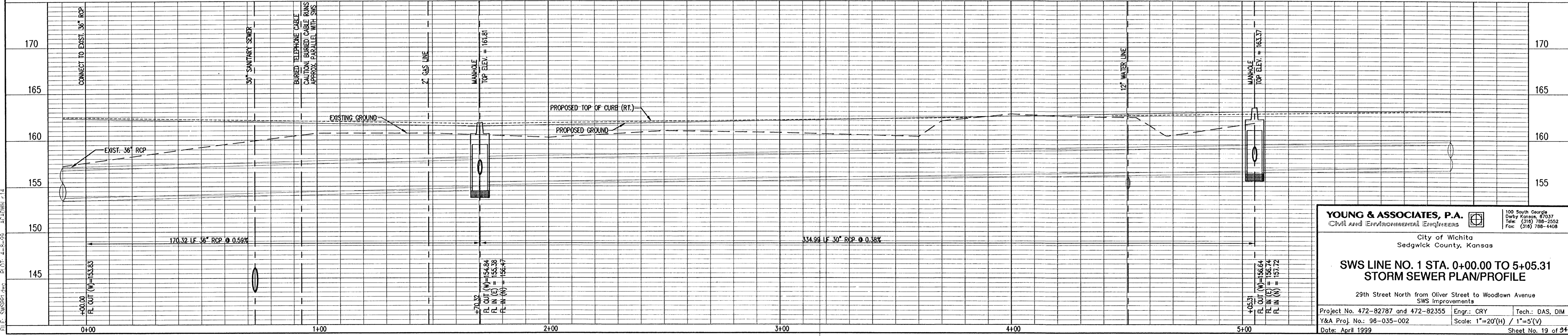
REMOVE 2 - 21" X 15" CMPA SEE SHEET 7

COORDINATE PAVEMENT CROSSING WITH PAVING CONTRACTOR

**BENCHMARK INFORMATION:**  
 RR SPIKE IN SW FACE OF POWER POLE 26.5' NORTH OF 1/16 CORNER, 1/4 MILE EAST OF 29TH STREET NORTH AND OLIVER. ELEV. = 161.18  
 NW CORNER CONCRETE GUTTER ON BEACON HILL ROAD MEDIAN AT 29TH STREET NORTH. ELEV. = 162.99  
 BARNES' COTTONWOOD CREEK ADDITION. NORTH RIM OF MANHOLE, 35' +/- SOUTH AND 3' +/- EAST OF SW CORNER OF LOT 1. ELEV. = 164.21

PIPELINE DISTANCES ARE FROM CL STRUCTURE TO CL STRUCTURE

STORM SEWER LINE NO. 1



**YOUNG & ASSOCIATES, P.A.**  
 Civil and Environmental Engineers  
 City of Wichita  
 Sedgewick County, Kansas

**SWS LINE NO. 1 STA. 0+00.00 TO 5+05.31  
 STORM SEWER PLAN/PROFILE**

29th Street North from Oliver Street to Woodlawn Avenue  
 SWS Improvements

Project No. 472-82787 and 472-82355 Engr.: CRY Tech.: DAS, DIM  
 Y&A Proj. No.: 96-035-002 Scale: 1"=20'(H) / 1"=5'(V)  
 Date: April 1999 Sheet No. 19 of 94