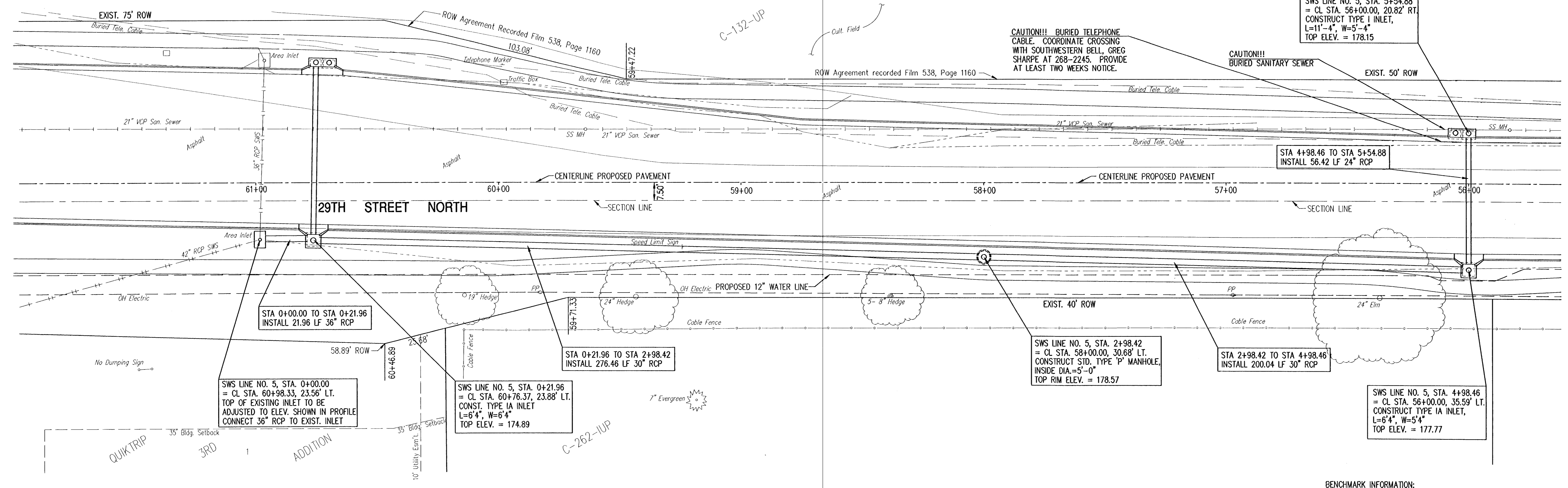
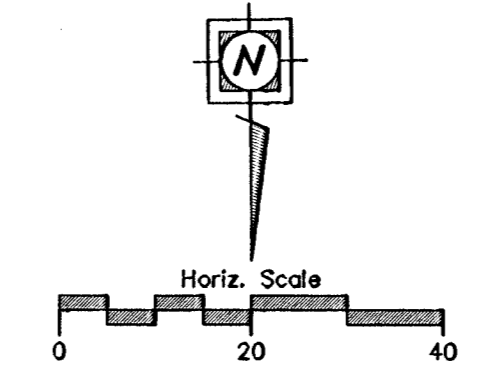


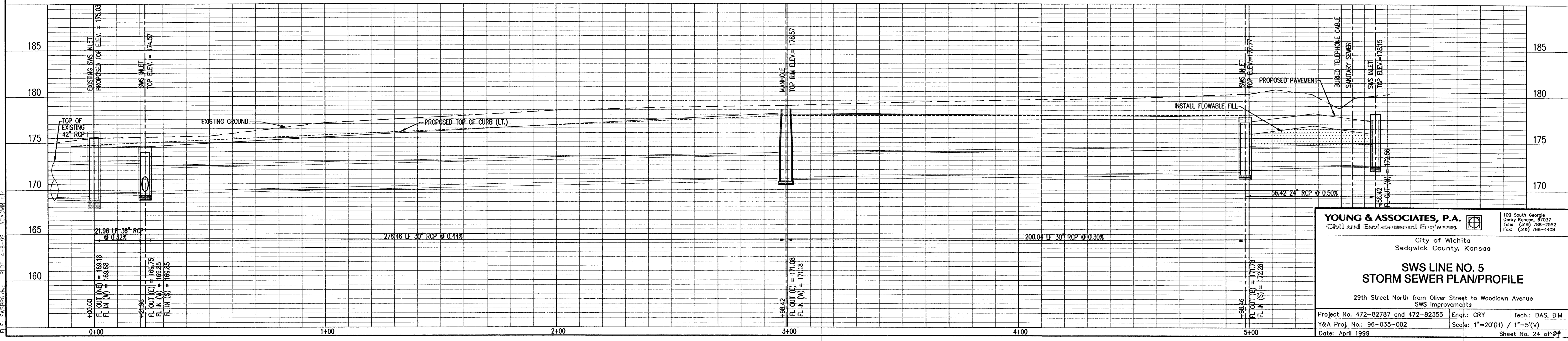
FEMA REGION NO.	STATE	PROJECT NO.	YEAR	SHEET NO.	TOTAL SHEETS
7	KANSAS	87 N-0137-01	99	24	34



PIPELINE DISTANCES ARE FROM CL STRUCTURE TO CL STRUCTURE

STORM SEWER LINE NO. 5

BENCHMARK INFORMATION:
WOODLAWN AND 29TH STREET NORTH,
CITY OF WICHITA BENCHMARK. RCBC ON
29TH STREET NORTH. NORTH HUBGUARD,
EAST END. 100+/- EAST OF CL WOODLAWN.
75+/- NORTH OF CL 29TH STREET NORTH. ELEV. = 172.41



YOUNG & ASSOCIATES, P.A.
Civil and Environmental Engineers
100 South George
Dexy Kansas, 67037
Tel: (316) 788-2552
Fax: (316) 788-4468

City of Wichita
Sedgwick County, Kansas

**SWS LINE NO. 5
STORM SEWER PLAN/PROFILE**

29th Street North from Oliver Street to Woodlawn Avenue
SWS Improvements

Project No. 472-82787 and 472-82355 Engr.: CRY Tech.: DAS, DIM
Y&A Proj. No.: 98-035-002 Scale: 1"=20'(H) / 1"=5'(V)
Date: April 1999 Sheet No. 24 of 34