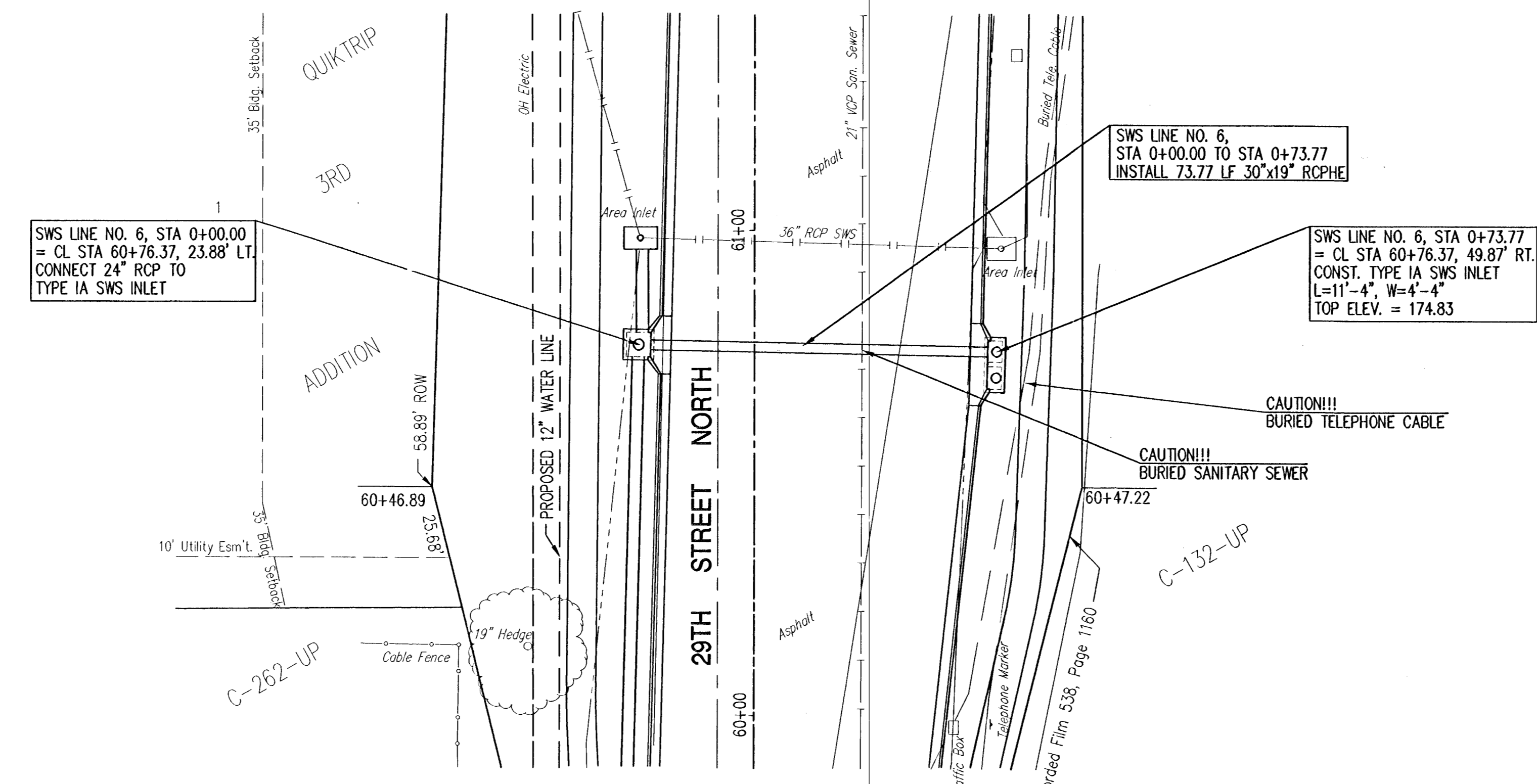
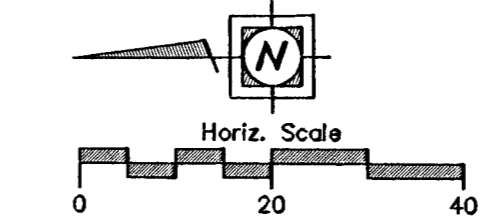


FHWA REGION NO.	STATE	PROJECT NO.	YEAR	SHEET NO.	TOTAL SHEETS
7	KANSAS	87 N-0137-01	99	25	94



SWS LINE NO. 6, STA 0+00.00
= CL STA 60+76.37, 23.88' LT.
CONNECT 24" RCP TO
TYPE IA SWS INLET

SWS LINE NO. 6,
STA 0+00.00 TO STA 0+73.77
INSTALL 73.77 LF 30"x19" RCPHE

SWS LINE NO. 6, STA 0+73.77
= CL STA 60+76.37, 49.87' RT.
CONST. TYPE IA SWS INLET
L=11'-4", W=4'-4"
TOP ELEV. = 174.83

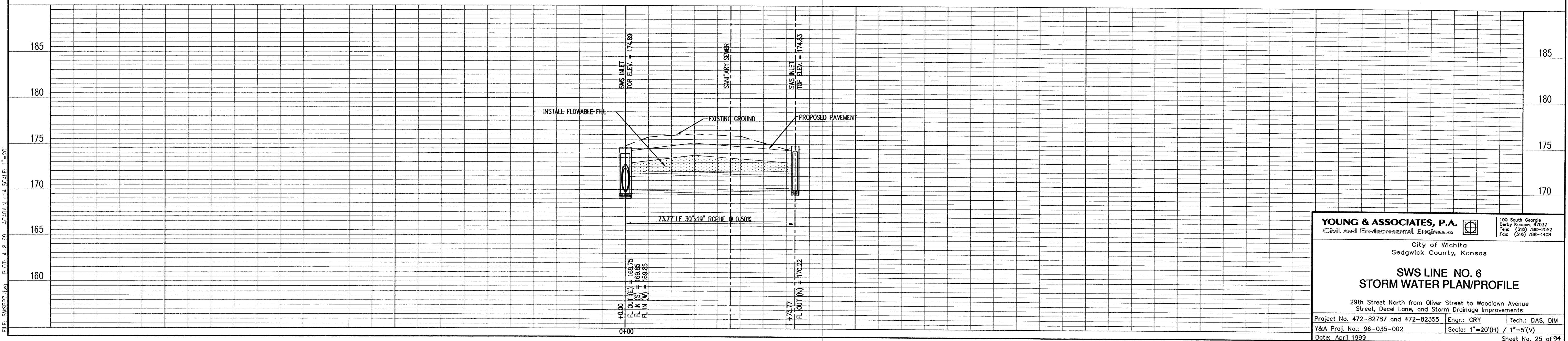
CAUTION!!!
BURIED TELEPHONE CABLE

CAUTION!!!
BURIED SANITARY SEWER

PIPELINE DISTANCES ARE FROM CL
STRUCTURE TO CL STRUCTURE

STORM SEWER LINE NO. 6

BENCHMARK INFORMATION:
WOODLAWN AND 29TH STREET NORTH,
CITY OF WICHITA BENCHMARK. RCBC ON
29TH STREET NORTH. NORTH HUBGUARD,
EAST END. 100+/- EAST OF CL WOODLAWN.
75+/- NORTH OF CL 29TH STREET NORTH. ELEV. = 172.41



YOUNG & ASSOCIATES, P.A.
CIVIL AND ENVIRONMENTAL ENGINEERS
100 South Georgia
Derby, Kansas, 67037
Tel: (316) 798-2552
Fax: (316) 798-4408

City of Wichita
Sedgewick County, Kansas

**SWS LINE NO. 6
STORM WATER PLAN/PROFILE**

29th Street North from Oliver Street to Woodlawn Avenue
Street, Decal Lane, and Storm Drainage Improvements

Project No. 472-82787 and 472-82355 Engr.: CRY Tech.: DAS, DIM
Y&A Proj. No.: 96-035-002 Scale: 1"=20'(H) / 1"=5'(V)
Date: April 1999 Sheet No. 25 of 94

FILE: SWS027.dwg PLOT: 4-16-99 ACADWIN, P14, 5:41 P., 1"=20'