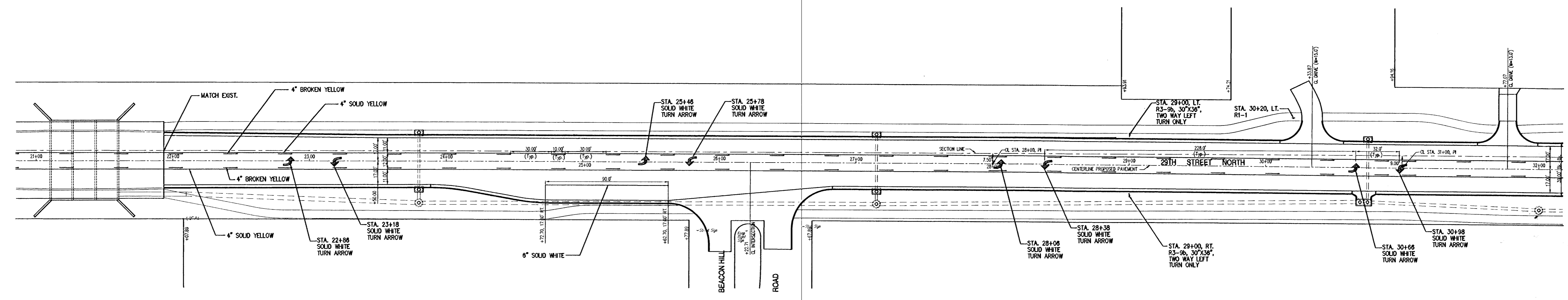
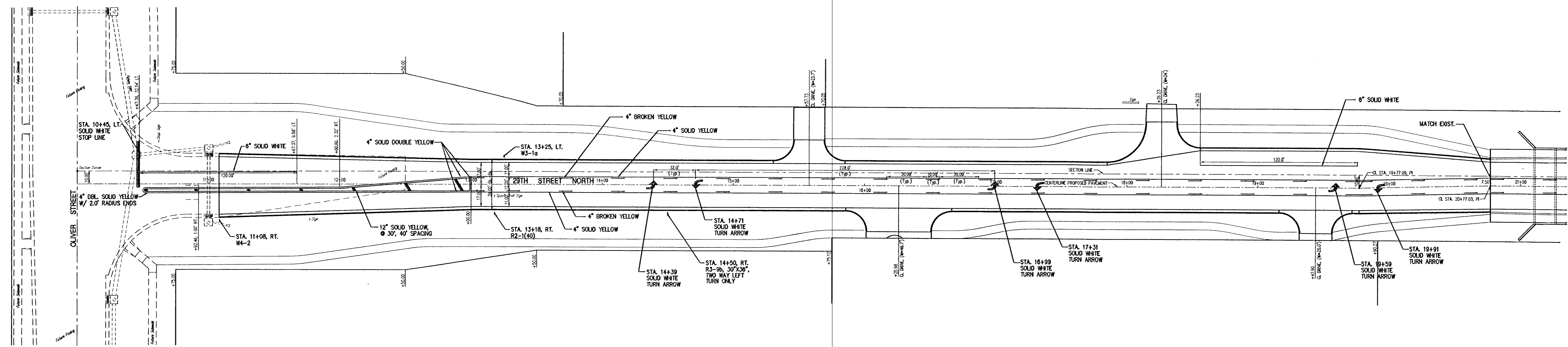
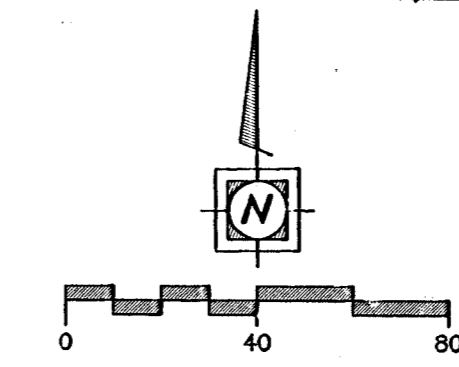


FHWA REGION NO.	PROJECT NO.	YEAR	SHEET NO.	TOTAL SHEETS
7	87 N-0137-01	99	34	94



- NOTE:
1. THE CONTRACTOR SHALL NOTIFY UTILITY COMPANIES TO REMOVE AND RESET THEIR EXISTING SIGNS AND MARKERS AS REQUIRED FOR NEW CONSTRUCTION.
 2. ALL SIGNS ARE TO BE FURNISHED AND INSTALLED BY THE CONTRACTOR.

YOUNG & ASSOCIATES, P.A.
 Civil and Environmental Engineers
 100 South Georgia
 Derby, Kansas, 67037
 Tel: (316) 788-2552
 Fax: (316) 788-4408

City of Wichita
 Sedgewick County, Kansas

**29TH STREET NORTH
 PAVEMENT MARKING PLAN**

29th Street North from Oliver Street to Woodtown Avenue
 Street, Decal Lane, and Storm Drainage Improvements

Project No. 472-82787 and 472-82355 Engr.: CRY Tech.: DAS, DIM
 Y&A Proj. No.: 96-035-002 Scale: 1"=40'
 Date: April 1999 Sheet No. 34 of 94

D:\E-24\WKR\29th DOT 4-8-99 3:07PM 1:4