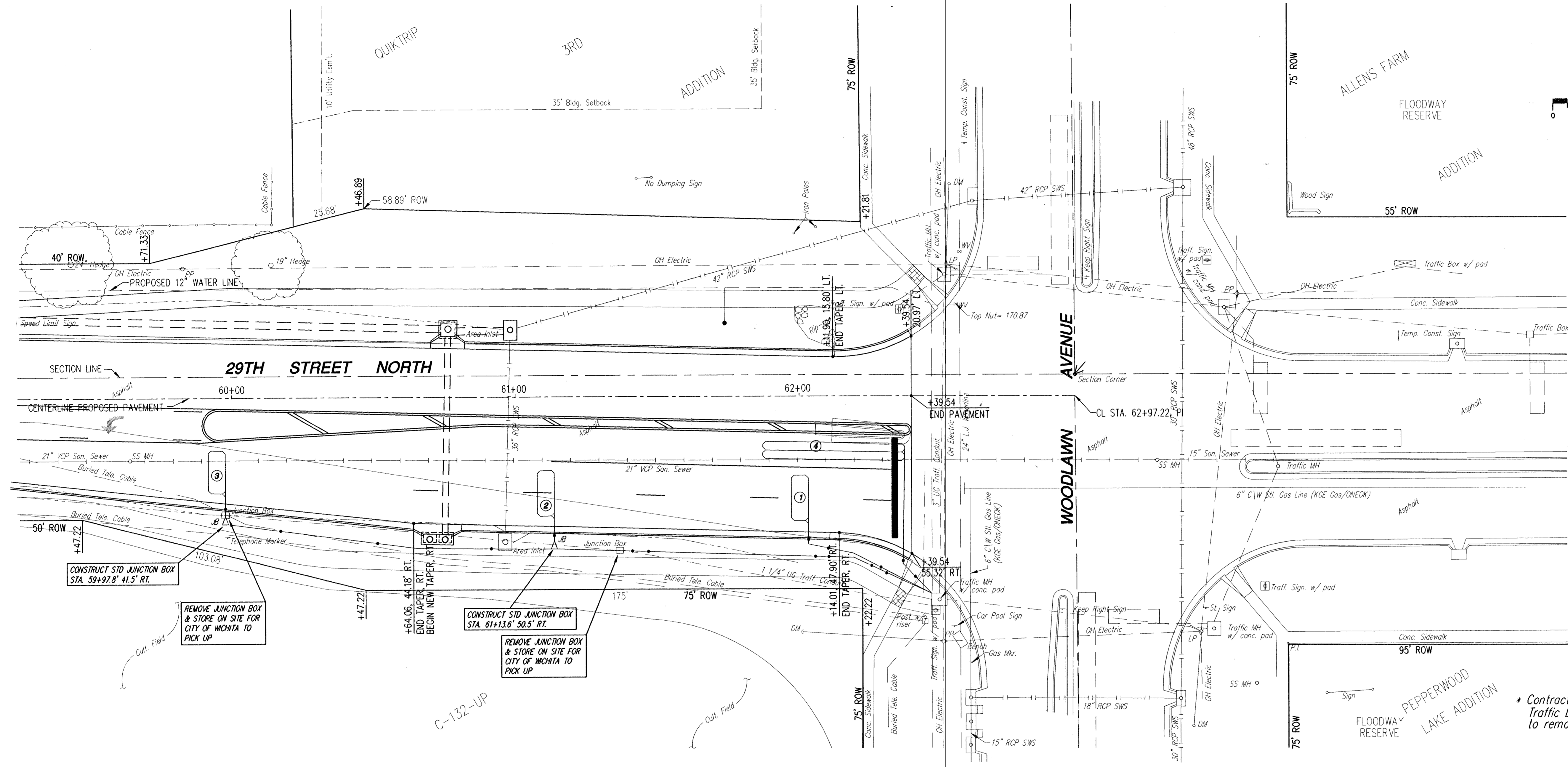
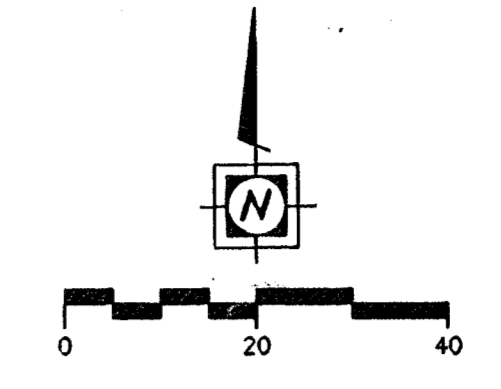


FEMA REGION NO.	STATE	PROJECT NO.	YEAR	SHEET NO.	TOTAL SHEETS
7	KANSAS	87 N-0137-01	99	42	94



LEGEND

- Signal Pole
- Pedestrian Indicator
- ⊠ Traffic Signal
- ⊞ Controller
- ⊙ Service Box
- △ Junction Box
- ⊕ Power Pole
- ⊙ Manhole
- Street Light
- ⊕ Fire Hydrant
- 3/4" conduit
- 1 1/4" conduit

LOOP DETECTOR CHART

LOOP	SIZE	No. OF TURNS	MOVEMENT CALLED
1	6'X16'	4	Ø2
2	6'X16'	4	Ø2
3	6'X15'	4	Ø2
4	6'X50'	2 - 4 - 2	Ø5

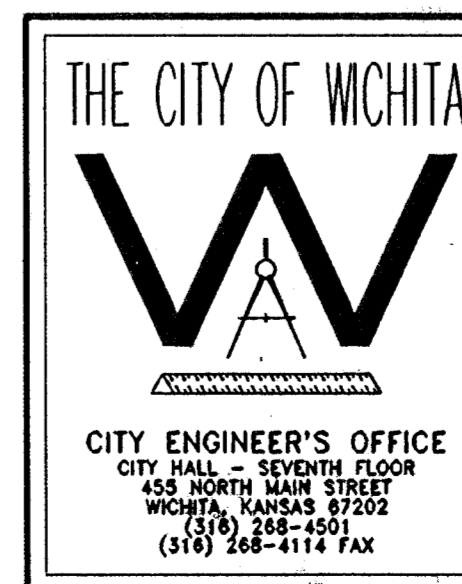
BILL OF MATERIALS

ITEM	UNIT	QUANTITIES
LOOP DETECTOR WIRE (THHN #14 AWG)	L.F.	2190'
PAVEMENT SAWING & SEALANT	L.F.	335'
RIGID GALVANIZED CONDUIT 3/4"	L.F.	210'
RIGID GALVANIZED CONDUIT 1 1/4"	L.F.	140'
JUNCTION BOXES	EACH	2

* Contractor to contact Jim Parks with the City of Wichita Traffic Department @ 268-4033 a minimum 48 hours prior to removing loops during construction.

GENERAL NOTES

- Utility locations shown are approximate. Contractor shall be responsible for verifying location of all underground utilities prior to construction.
- QUANTITIES ARE FOR INFORMATION ONLY. The Contractor shall supply and install all necessary materials and equipment for the complete installation and operation of the traffic signal system whether specifically mentioned or not.



TRAFFIC SIGNALIZATION PLAN

29th Street North from Oliver Street to Woodlawn Avenue
Streets, Decal Lane, and Storm Drainage Improvements

M. E. LINDEBAK P.E. - CITY ENGINEER

PROJECT NUMBER 472-82787	INDEX CODE XXXXXX
DATE MAY 98	SHEET 42 OF 94

CITY ENGINEER'S OFFICE
CITY HALL - SEVENTH FLOOR
458 NORTH MAIN STREET
WICHITA, KANSAS 67202
(316) 268-4501
(316) 268-4114 FAX