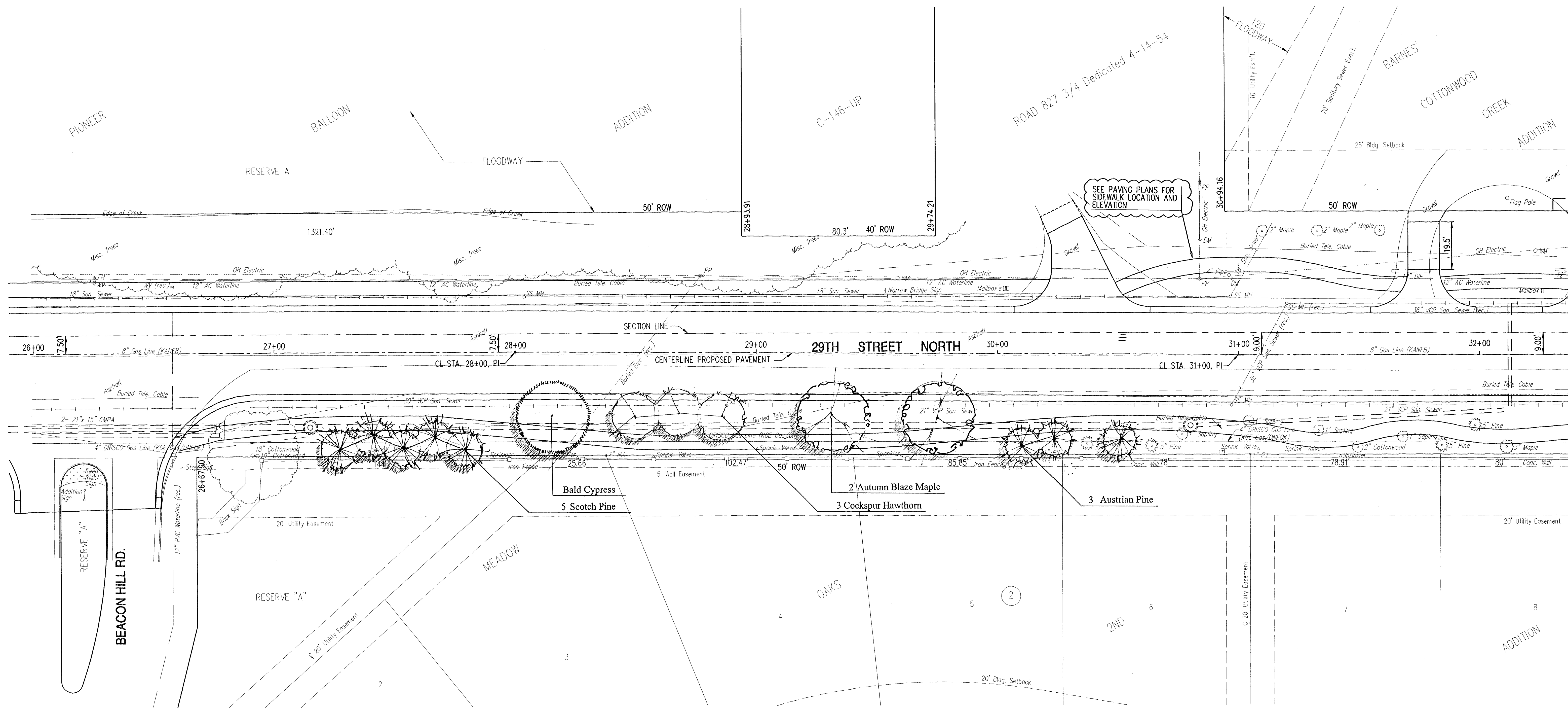
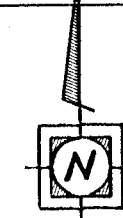


FHWA REGION NO.	STATE	PROJECT NO.	YEAR	SHEET NO.	TOTAL SHEETS
7	KANSAS	87 N-0137-01	99	48	94



Bid Items (per sheet)

Qty	Botanical Name	Common Name	Size
2	Acer fremanii 'Autumn Blaze'	'Autumn Blaze' Maple	2.5"
1	Taxodium distichum	Bald Cypress	3.0
3	Pinus nigra	Austrian Pine	5-6 ft.
5	Pinus sylvestris	Scotch Pine	5-6 ft.
3	Crataegus crusgalli var.inermis	Cocksbur Thornless Hawthorn	1.5
Seeding Turf type tall fescue			0.30 acres

YOUNG & ASSOCIATES, P.A.
 CIVIL AND ENVIRONMENTAL ENGINEERS
 100 South Georgia
 Derby, Kansas, 67037
 Tel: (316) 788-2552
 Fax: (316) 788-4408

City of Wichita
 Sedgwick County, Kansas

**CL STA. 26+22.71 TO 32+00
 LANDSCAPE PLAN**

29th Street North from Oliver Street to Woodlawn Avenue
 Street, Decel Lane, and Storm Drainage Improvements

Project No.: 96-035-002
 Date: January 1998

Design:
 Tech.:
 Sheet No. 48 of 94

FILE: I:\CUB24.dwg D:\T: 1-17-98 3:40PM PLOT SCALE: 1"=20'