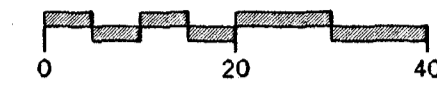
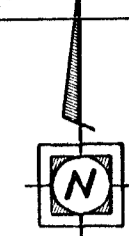
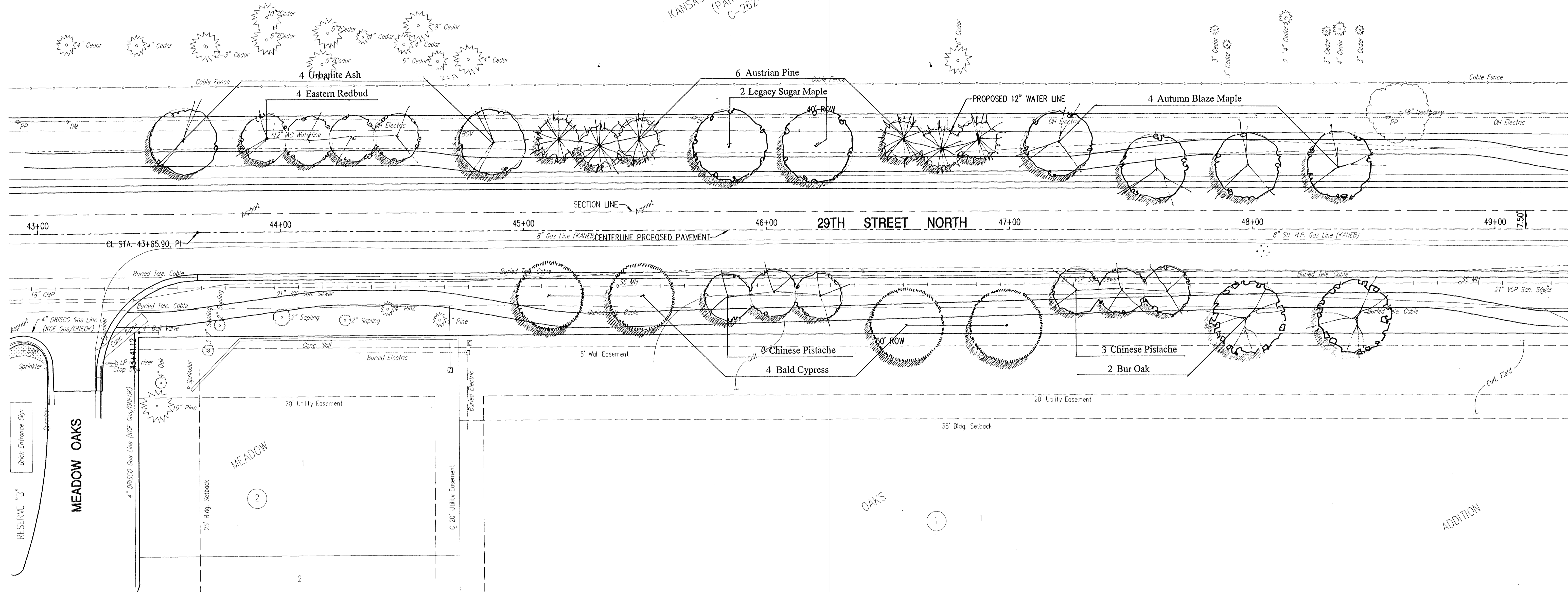


FHWA REGION NO.	STATE	PROJECT NO.	YEAR	SHEET NO.	TOTAL SHEETS
7	KANSAS	87 N-0137-01	99	51	94



KANSAS WILDLIFE AND PARKS
(PARK BOARD)
C-262-UP



Bid Items (per sheet)

Qty	Botanical Name	Common Name	Size
4	Acer freemanii 'Autumn Blaze'	'Autumn Blaze' Maple	2.5"
2	Fraxinus pennsylvanica	'Urbanite' Ash	2.5"
2	Quercus macrocarpa	Bur Oak	2.5"
2	Acer sacrum 'Legacy'	Legacy Sugar Maple	2.5"
4	Taxodium distichum	Bald Cypress	3.0"
6	Pinus nigra	Austrian Pine	5-6 ft.
4	Cercis canadensis	Eastern Redbud	1.5"
6	Pistache chinensis	Chinese Pistache	1.5"
Seeding Turf type tall fescue			0.45 acres

YOUNG & ASSOCIATES, P.A.
CIVIL AND ENVIRONMENTAL ENGINEERS

100 South George
Topeka, Kansas, 67601
Tel: (316) 788-2552
Fax: (316) 788-4408

City of Wichita
Sedgewick County, Kansas

CL STA. 43+65.90 TO 49+00
LANDSCAPE PLAN

29th Street North from Oliver Street to Woodlawn Avenue
Street, Decel Lane, and Storm Drainage Improvements

Project No.: 96-035-002 Design:
Date: January 1998 Tech.:
Sheet No. 51 of 94

FILE: 1-12-98... BLOT: 1-12-98... JCDOWN: 14 SCALE: 1"=20'