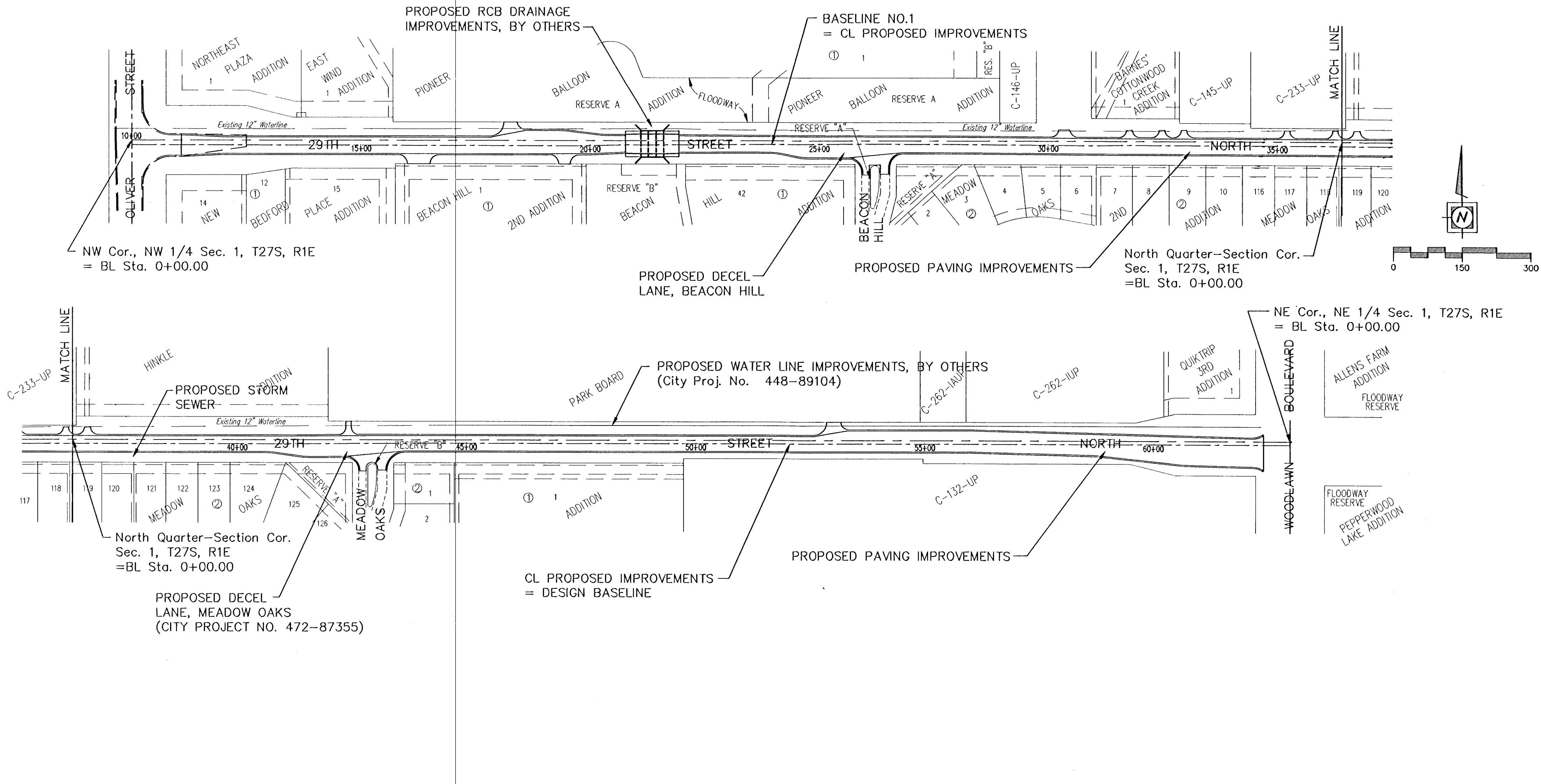


FHWA REGION NO.	STATE	PROJECT NO.	YEAR	SHEET NO.	TOTAL SHEETS
7	KANSAS	87 N-0137-01	99	55	94

EARTHWORK QUANTITIES: (29TH STREET NORTH)

STATION	TOTAL AREA CUT, SF	TOTAL AREA FILL, SF	AVG. VOLUME CUT, CY	AVG. VOLUME FILL, CY	CUMULATIVE TOTAL EXCAVATION, CY
11+00	00.00	0.00	0.00	0.00	0.00
11+08.03	98.12	16.52	14.59	2.46	12.13
11+50	29.14	30.33	15.31	36.88	128.57
12+00	125.13	19.28	46.49	289.74	289.74
12+50	83.12	41.99	192.82	56.73	425.83
13+00	88.13	25.92	158.56	62.88	521.51
13+50	71.38	40.41	147.69	61.42	607.79
14+00	63.24	29.93	124.65	65.13	667.31
14+50	51.35	39.71	108.10	64.48	708.33
15+00	50.21	44.53	78.24	78.00	709.17
15+30.38	23.22	66.97	31.71	62.73	678.16
15+50	28.60	38.99	18.50	38.49	658.56
15+57.13	54.49	39.59	11.25	11.25	650.39
15+85.63	14.34	42.41	25.23	42.36	639.24
16+00	28.14	17.21	10.77	15.87	634.15
16+25.98	28.24	62.88	25.20	38.53	620.82
16+50	22.09	75.84	21.50	61.70	580.61
16+66.32	14.37	95.84	11.02	51.89	539.74
17+00	14.43	84.66	17.96	112.98	445.15
17+50	20.26	101.68	32.12	172.54	304.71
17+84.79	23.71	85.95	28.33	120.88	212.16
18+00	32.17	54.83	15.74	39.65	188.24
18+26.23	59.49	11.07	44.52	31.99	200.78
18+50	55.65	24.45	50.68	15.61	235.85
18+55.83	46.08	28.20	10.98	5.68	241.15
19+00	48.56	43.00	77.40	58.32	280.22
19+15.94	53.38	43.44	30.09	25.55	264.77
19+43.90	85.61	50.61	71.97	48.70	288.04
19+50	88.69	57.94	57.94	19.71	295.49
19+71.66	61.08	111.69	60.15	68.04	287.60
19+77.00	59.71	110.18	11.94	21.94	277.61
20+00	57.78	111.52	60.04	94.34	233.31
20+50	40.99	111.73	91.45	206.53	118.23
20+77.03	50.03	112.97	45.56	112.47	51.32
21+53.39	43.25	101.12	101.12	461.32	-209.01
22+00	40.47	78.49	10.25	21.99	-220.74
22+50	43.04	70.57	77.32	138.02	-281.44
23+00	43.24	31.12	79.89	34.16	-295.71
23+50	40.77	21.99	51.03	-288.99	-247.77
23+88.63	47.32	34.41	63.02	41.78	-247.77
24+00	48.08	35.17	20.09	14.65	-242.27
24+50	43.50	17.77	53.76	49.02	-108.99
24+76.99	49.25	19.50	51.49	18.53	-164.04
25+00	48.95	18.59	41.89	18.15	-138.34
25+50	43.50	24.55	85.60	39.57	-92.31
25+62.70	47.84	24.85	21.43	11.52	-82.40
26+00	92.72	15.22	98.95	-13.12	-42.35
26+22.71	71.62	17.51	69.60	13.72	-35.63
26+50	90.19	19.27	82.89	18.41	-106.83
26+82.80	32.62	89.81	75.81	68.10	-116.53
27+00	29.63	76.35	19.83	52.93	-83.43
27+50	59.63	44.30	64.13	111.71	-35.95
28+00	49.37	40.09	82.41	78.14	40.12
28+50	60.97	38.43	102.17	72.70	69.58
29+00	60.21	21.45	112.20	128.54	128.54
29+50	73.02	14.91	123.36	33.67	218.04
30+00	96.58	3.17	157.04	16.74	356.33
30+08.87	100.29	0.59	25.02	0.48	350.89
30+33.87	134.71	0.00	117.42	0.30	498.00
30+50	135.27	0.00	80.65	0.00	578.65
30+63.26	134.91	1.39	66.34	0.34	644.65
31+00	163.07	0.00	202.74	1.29	848.09
31+50	139.49	0.00	280.15	0.47	1125.77
31+55.07	144.12	1.75	26.83	0.18	1152.22
31+77.07	200.83	0.00	140.84	0.71	1292.05
32+00	146.81	8.18	147.62	3.47	1436.20
32+26.26	138.66	9.87	138.82	8.78	1566.24
32+48.26	208.05	2.44	140.44	4.97	1701.71
32+50	205.88	2.14	13.27	0.14	1714.84
32+70.26	152.80	0.00	134.57	0.80	1848.60
32+74.17	154.44	1.31	22.25	0.09	1870.78
32+86.17	166.32	0.24	130.68	0.63	2000.80
33+00	164.31	0.33	23.45	0.04	2024.21
33+18.17	135.72	3.37	100.95	1.24	2123.92
33+50	136.23	6.29	100.30	5.69	2278.53
34+00	132.20	11.99	248.55	16.93	2510.15
34+50	132.10	5.61	244.72	18.30	2738.58
35+00	128.72	7.58	241.50	12.21	2967.86
35+20.97	137.69	3.07	103.46	4.14	3067.18
35+41.47	133.07	3.82	102.79	2.62	3167.36
35+50	133.52	3.81	1.21	42	3208.28
36+00	130.30	1.61	244.28	5.02	3447.52
36+05.44	127.04	1.75	25.92	0.34	3473.11
36+28.94	166.38	0.50	111.39	0.85	3583.84
36+46.44	150.85	2.17	112.84	3.69	3695.47
36+50	127.32	1.32	17.02	0.23	3712.28
36+73.09	159.61	1.71	122.69	1.30	3833.65
36+95.81	107.42	15.79	112.35	39.84	3938.64
37+00	105.22	18.70	16.50	2.68	3952.46
37+50	99.04	17.59	189.13	33.60	4107.99
38+00	84.32	38.47	169.78	41.19	4266.58
38+50	80.42	54.91	152.54	75.74	4313.38
39+00	77.28	56.25	148.02	102.93	4356.47
39+50	71.35	60.22	137.62	107.84	4386.25
40+00	69.57	51.80	130.48	103.72	4413.01
40+50	71.24	49.16	130.38	93.48	4449.91
40+61.68	70.89	46.79	30.74	20.75	4459.89
41+00	71.22	51.21	100.85	69.54	4491.20
41+50	71.90	51.45	132.52	95.08	4528.66
41+58.15	73.28	49.04	15.17	15.17	4535.40
42+00	72.46	36.62	112.97	65.61	4596.66
42+23.48	72.46	36.22	62.97	30.80	4614.83
42+35.74	82.59	10.55	35.20	10.39	4639.64
42+43.16	93.97	13.09	24.28	5.25	4660.95
42+50	114.75	6.15	26.44	2.44	4684.66
42+63.36	171.47	22.56	72.58	7.10	4748.38
42+65.80	124.67	16.89	177.90	23.70	4902.57
43+00	128.93	17.40	19.72	2.67	4919.63
43+50	77.48	59.78	191.12	71.46	5039.29
43+65.90	100.14	36.56	52.30	28.37	5063.22
44+00	114.38	31.21	135.47	42.80	5155.89
44+50	110.38	30.15	208.11	56.81	5307.18
44+80	107.32	29.88	201.87	55.58	5453.19
45+00	98.57	32.10	190.84	57.37	5588.46
46+00	80.69	36.47	175.24	63.49	5698.03
46+50	78.07	45.00	158.28	75.44	5779.03
47+00	79.38	43.41	145.79	81.86	5842.96
47+50	75.31	46.29	143.23	83.06	5903.14
48+00	70.17	50.73	138.08	89.83	5948.01
48+50	75.12	51.72	76.34	135.91	6066.19
49+00	79.75	27.75	143.60	55.08	6094.73
49+50	91.68	20.94	158.94	45.08	6208.58
50+00	82.46	23.49	152.94	42.46	6319.05
50+50	85.92	18.13	147.60	39.86	6426.79
51+00	99.22	1.65	171.43	18.31	6579.90
51+50	109.19	1.28	191.77	2.71	6770.28
52+00	127.99	0.00	215.88	11.19	6986.59
52+50	137.06	0.00	242.89	0.00	7234.01



EARTHWORK QUANTITIES: (29TH STREET NORTH)

STATION	TOTAL AREA CUT, SF	TOTAL AREA FILL, SF	AVG. VOLUME CUT, CY	AVG. VOLUME FILL, CY	CUMULATIVE TOTAL EXCAVATION, CY
52+57.97	136.42	0.00	40.36	0.00	7274.37
53+00	172.00	0.00	243.95	0.00	7518.32
53+19.84	178.18	0.00	210.08	0.00	7728.40
53+50	169.97	0.00	116.44	0.00	7844.83
54+00	169.59	0.00	314.41	0.00	8159.24
54+50	179.15	0.00	322.91	0.00	8482.15
55+00	213.63	0.00	369.24	0.00	8851.39
55+50	211.6	0.92	398.88	0.85	9249.42
56+00	228.17	0.00	404.94	0.85	9653.50
56+50	187.39	6.83	382.93	4.47	10031.98
57+00	168.18	9.62	329.23	13.38	10347.81
57+50	135.95	24.46	281.60	31.56	10597.85
58+00	127.49	20.49	243.93	41.62	10800.16
58+50	143.90	18.42	251.29	34.18	11017.27
58+75.49	150.59	17.63	139.01	16.07	11140.21
59+00	178.97	12.08	297.10	28.39	11287.98
59+50	194.62	6.94	344.06	17.61	11614.44
60+00	196.89	7.43	362.60	13.31	11983.73
60+50	184.00	8.37	352.77	14.63	12301.87
60+64.08	169.91	22.15	192.15	7.95	12386.07
61+00	168.54	12.47	218.60	23.04	12581.63
61+50	134.11	4.54	209.87	15.75	12856.66
62+00	111.47	10.62	227.39	14.04	13050.21
62+14.01	105.38	16.87	56.26	7.13	13099.34
62+38.44	133.38	7.23	112.58	11.39	13250.82
62+50	0.00	0.00	24.84	1.40	13224.28
			19087 CY	5755 CY	

TOTAL DECAL LANE CUT= 22 CY
 TOTAL DECAL LANE FILL= 17 CY
 TOTAL DECAL LANE COMPACTED FILL= 7 CY
 NOTES IN DESIGN NOTEBOOK

YOUNG & ASSOCIATES, P.A.
 Civil and Environmental Engineers
 100 South George
 Derby, Kansas, 67037
 Tel: (616) 788-2262
 Fax: (616) 788-4008

City of Wichita
 Sedgewick County, Kansas

EARTHWORK QUANTITIES

29th Street North from Oliver Street to Woodlawn Avenue
 Street, Decal Lane, and Storm Drainage Improvements

Project No. 472-82787 and 472-82355 Engr.: CRY Tech: DAS, DIM
 Y&A Proj. No.: 96-035-002 Scale: as noted
 Date: April 1999 Sheet No. 55 of 94