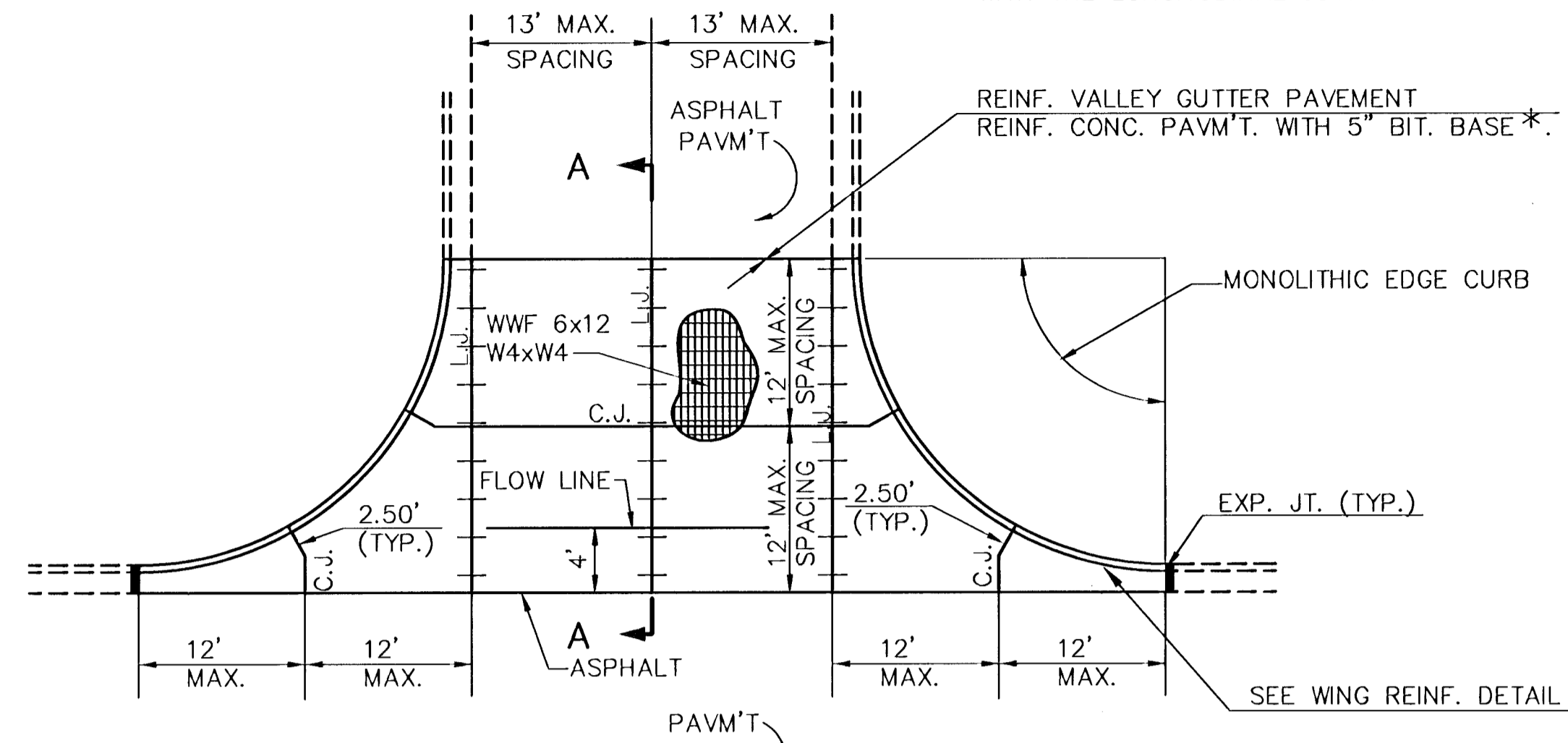
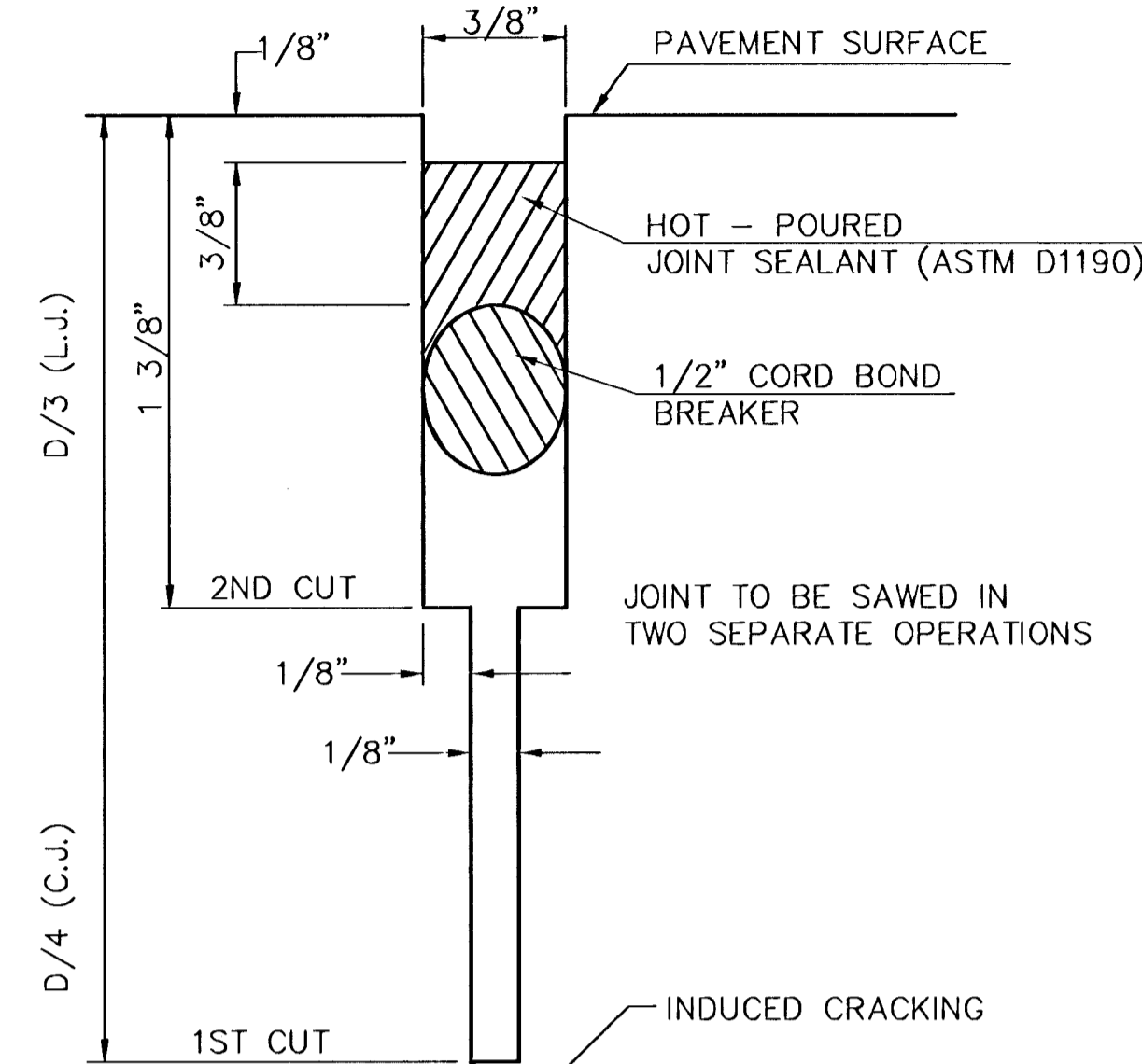


6"x12" W4xW4 WIRE FABRIC REINFORCING SHALL BE PLACED SUCH THAT THE WIRES WITH THE 6" SPACING WILL RUN PARALLEL WITH THE LONGITUDINAL JOINT.

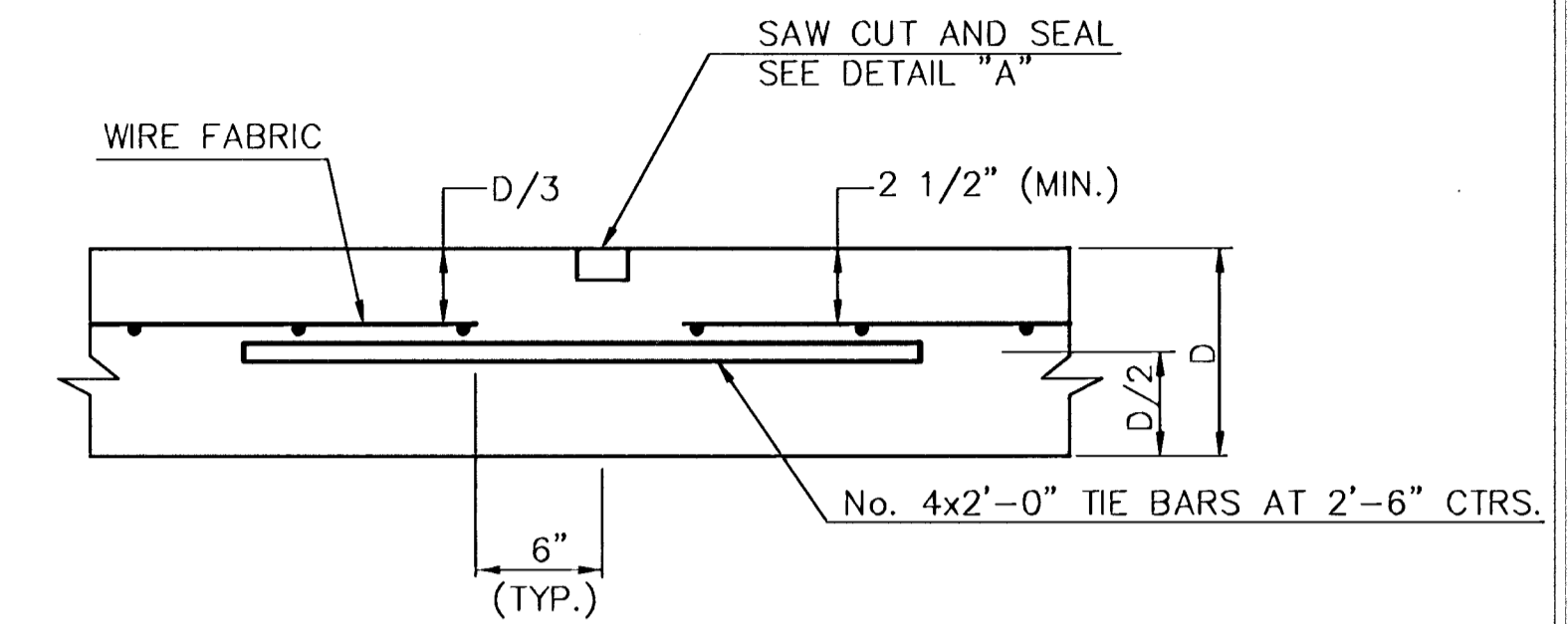


PLAN
REINFORCED VALLEY GUTTER
SCALE: NONE

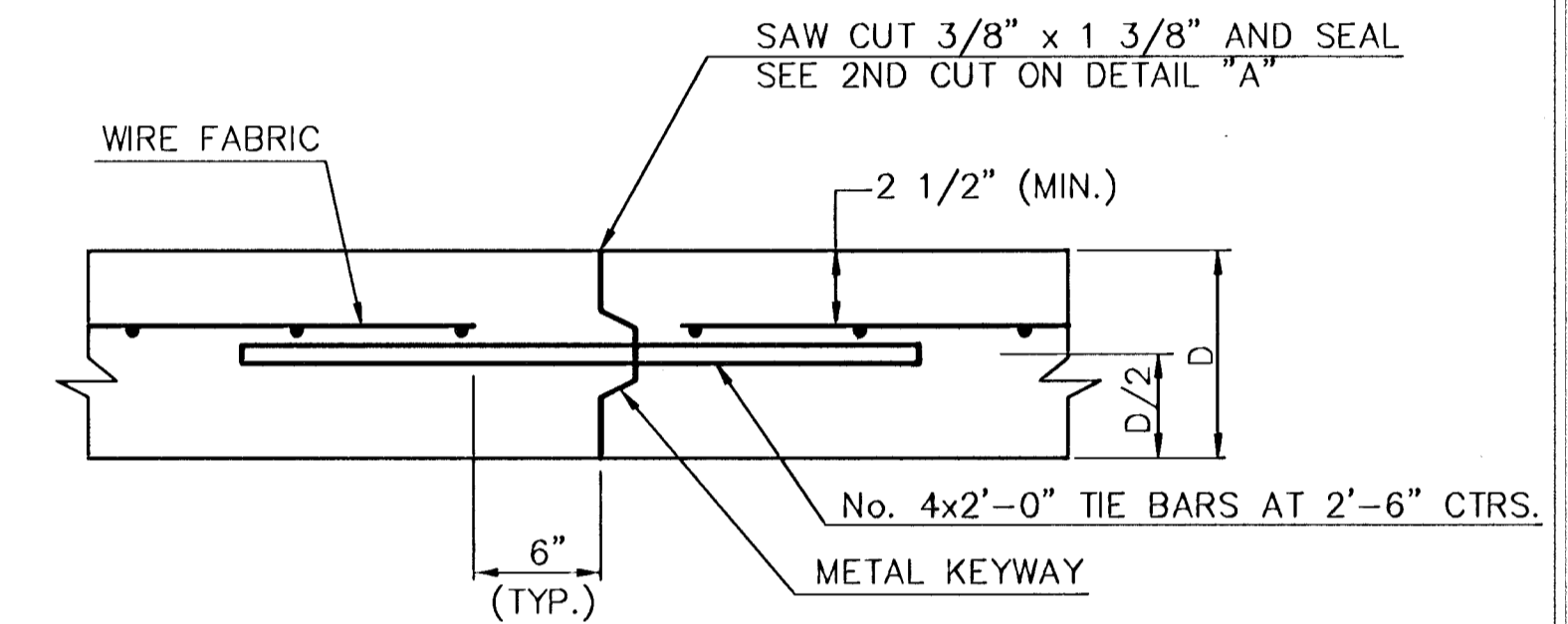
NOTE:
ALL CONCRETE VALLEY GUTTER REINFORCEMENT SHALL BE ADEQUATELY SUPPORTED BY BAR CHAIRS IN THE REQUIRED POSITION UNLESS APPROVED OTHERWISE BY THE ENGINEER.
*NOT TO BE USED WITH CRUSHED ROCK BASE.



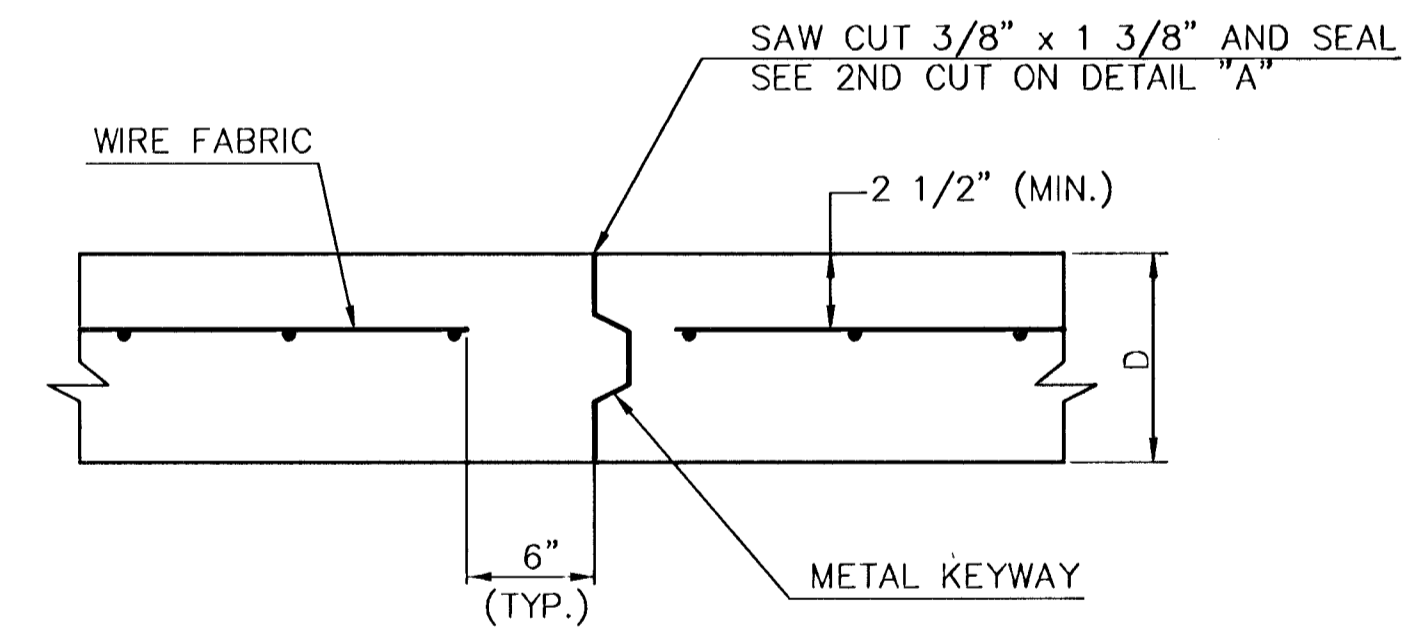
DETAIL "A"
SCALE: NONE



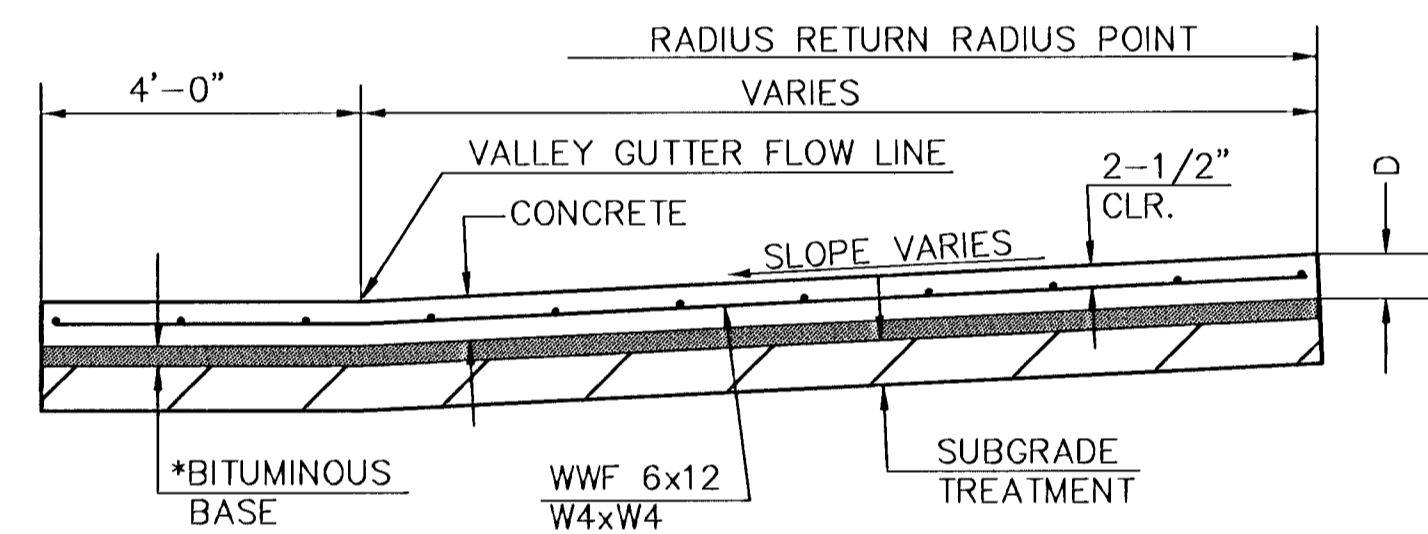
LONGITUDINAL JOINT DETAIL (L.J.)
SCALE: NONE



OPTIONAL LONGITUDINAL CONSTRUCTION JOINT (L.J.)
SCALE: NONE
(Alternate L.J.)

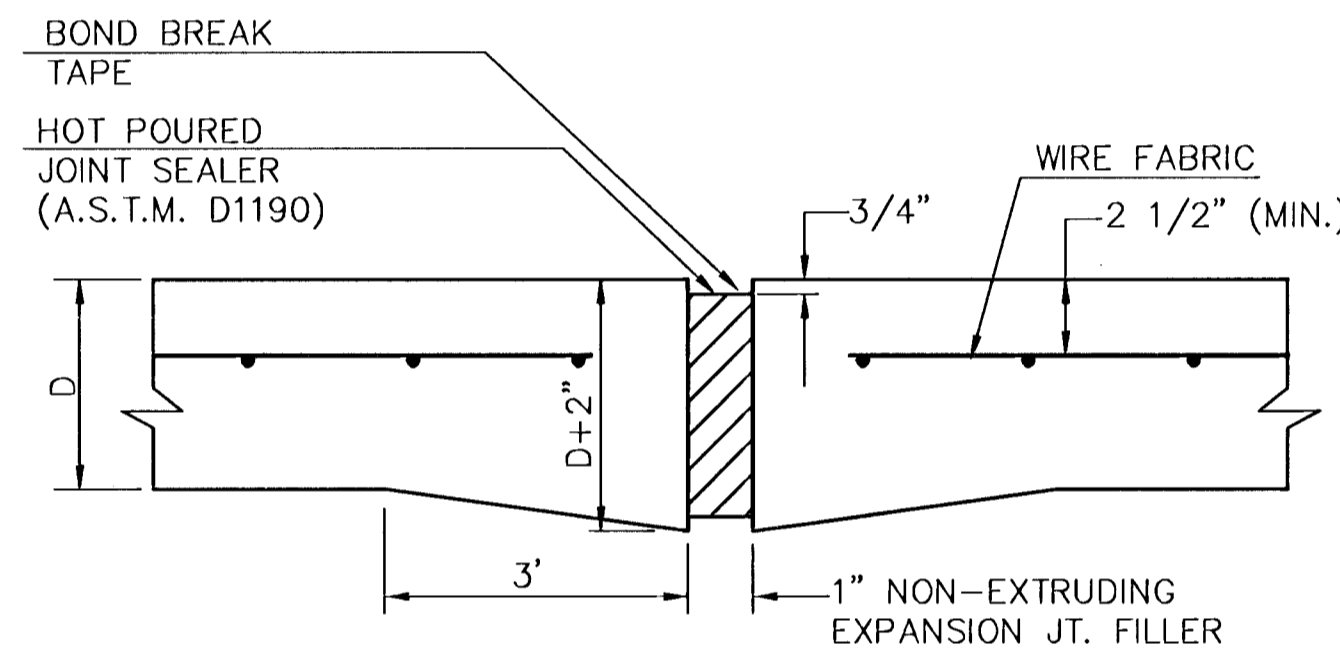


OPTIONAL CONTRACTION CONSTRUCTION JOINT (C.J.)
SCALE: NONE
(Alternate C.J.)



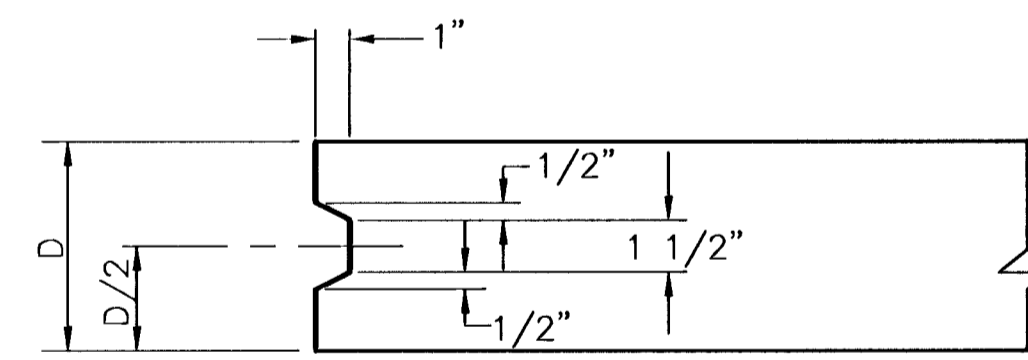
SECTION A-A
SCALE: NONE

*NOT TO BE USED WITH CRUSHED ROCK BASE

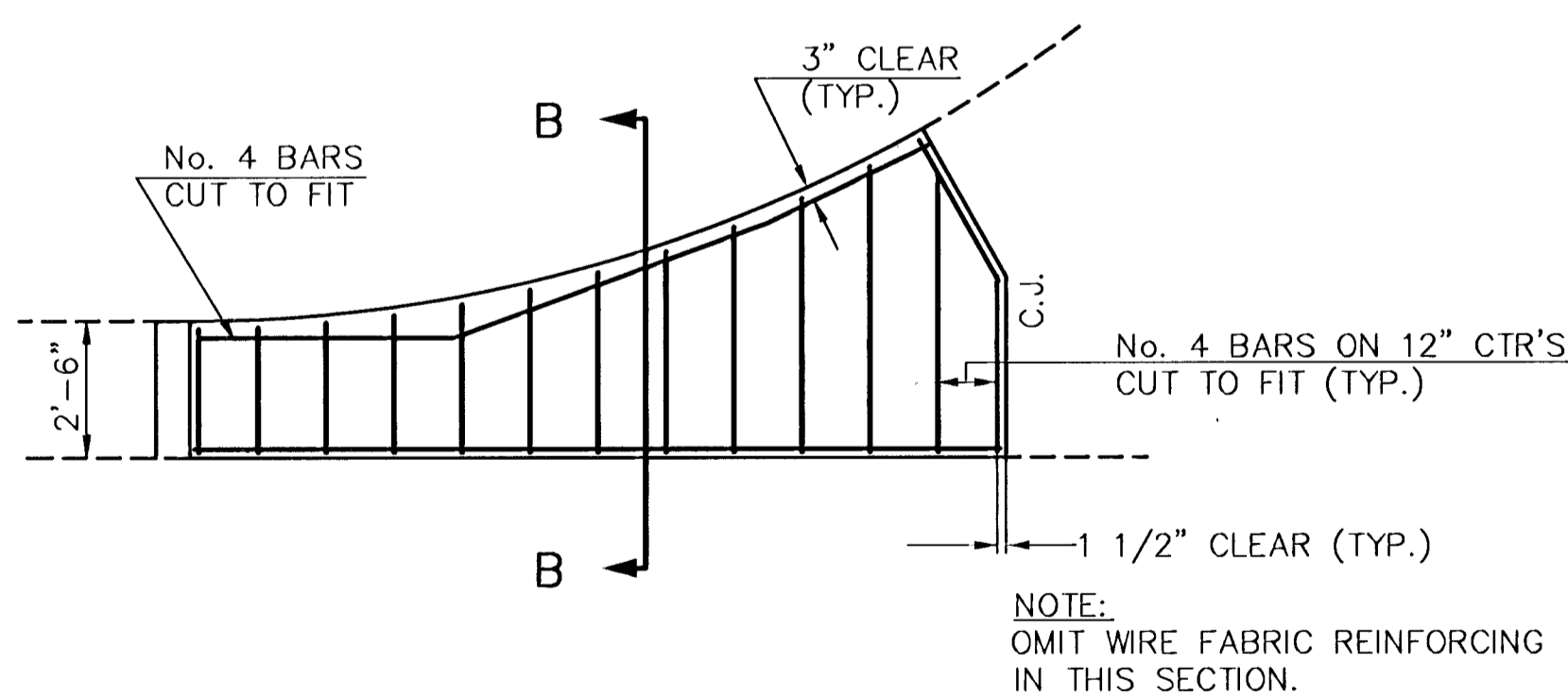


EXPANSION JOINT
SCALE: NONE

NOTE:
EXTRA THICKNESS TO BE SUBSIDIARY TO PRICE OF SQ. YDS. PAVEMENT.

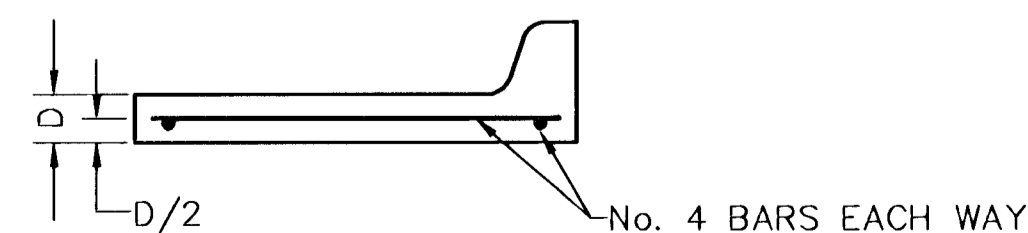


KEYWAY DETAIL
SCALE: NONE

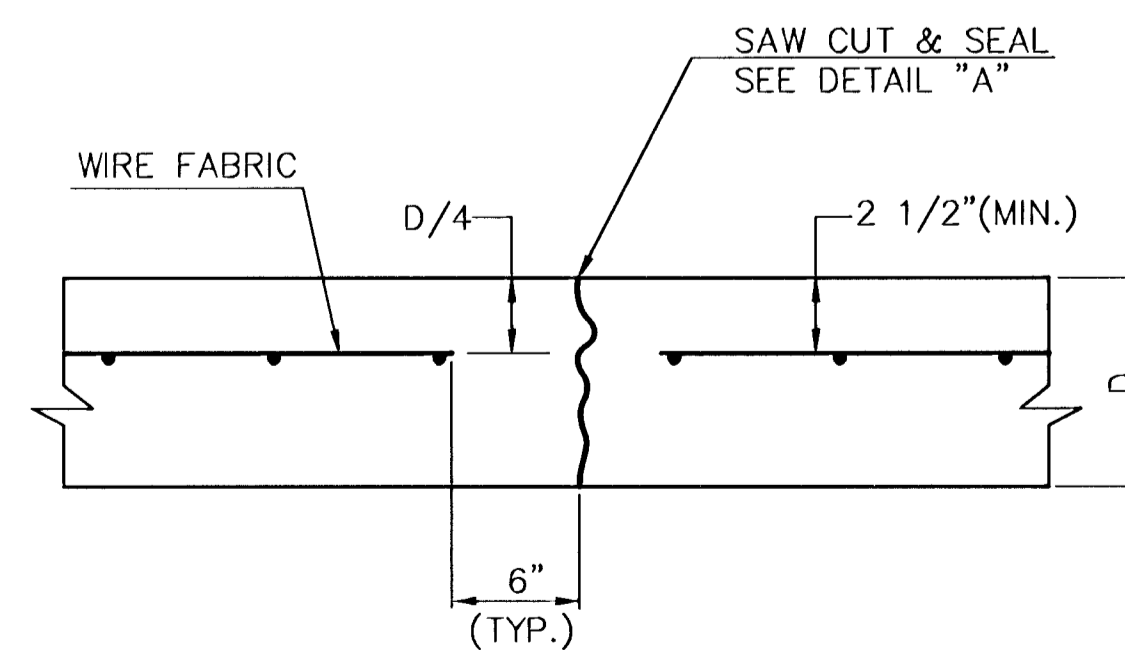


WING REINFORCING DETAIL
SCALE: NONE

NOTE:
OMIT WIRE FABRIC REINFORCING IN THIS SECTION.



SECTION B-B
SCALE: NONE



CONTRACTION JOINT DETAIL (C.J.)
SCALE: NONE

LEGEND
C.J. IDENTIFIES CONTRACTION JOINT
L.J. IDENTIFIES LONGITUDINAL JOINT

VALLEY GUTTER & MISC. DETAILS
CITY OF WICHITA, KANSAS

PROJECT NUMBER

CP 502
50