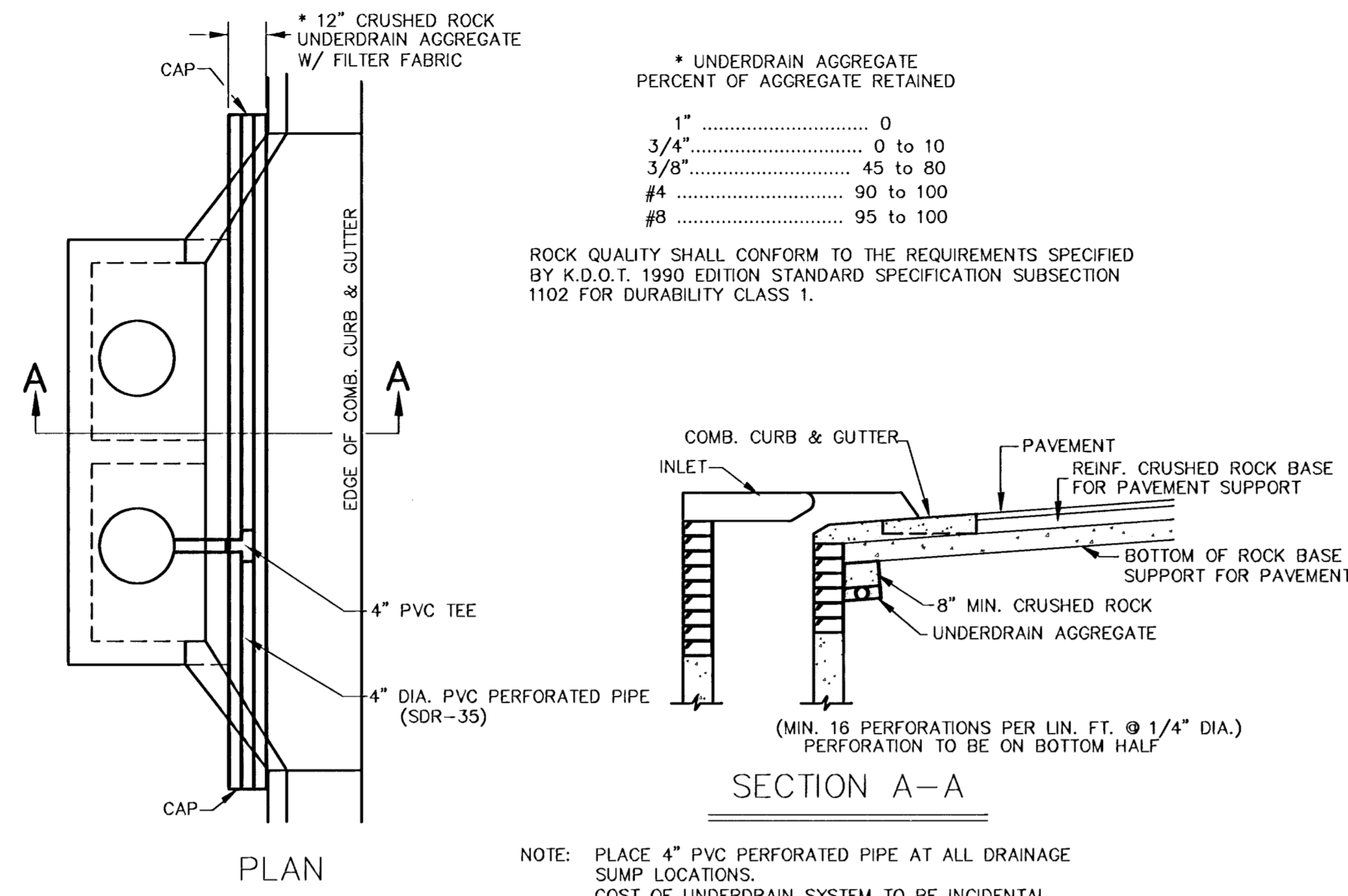
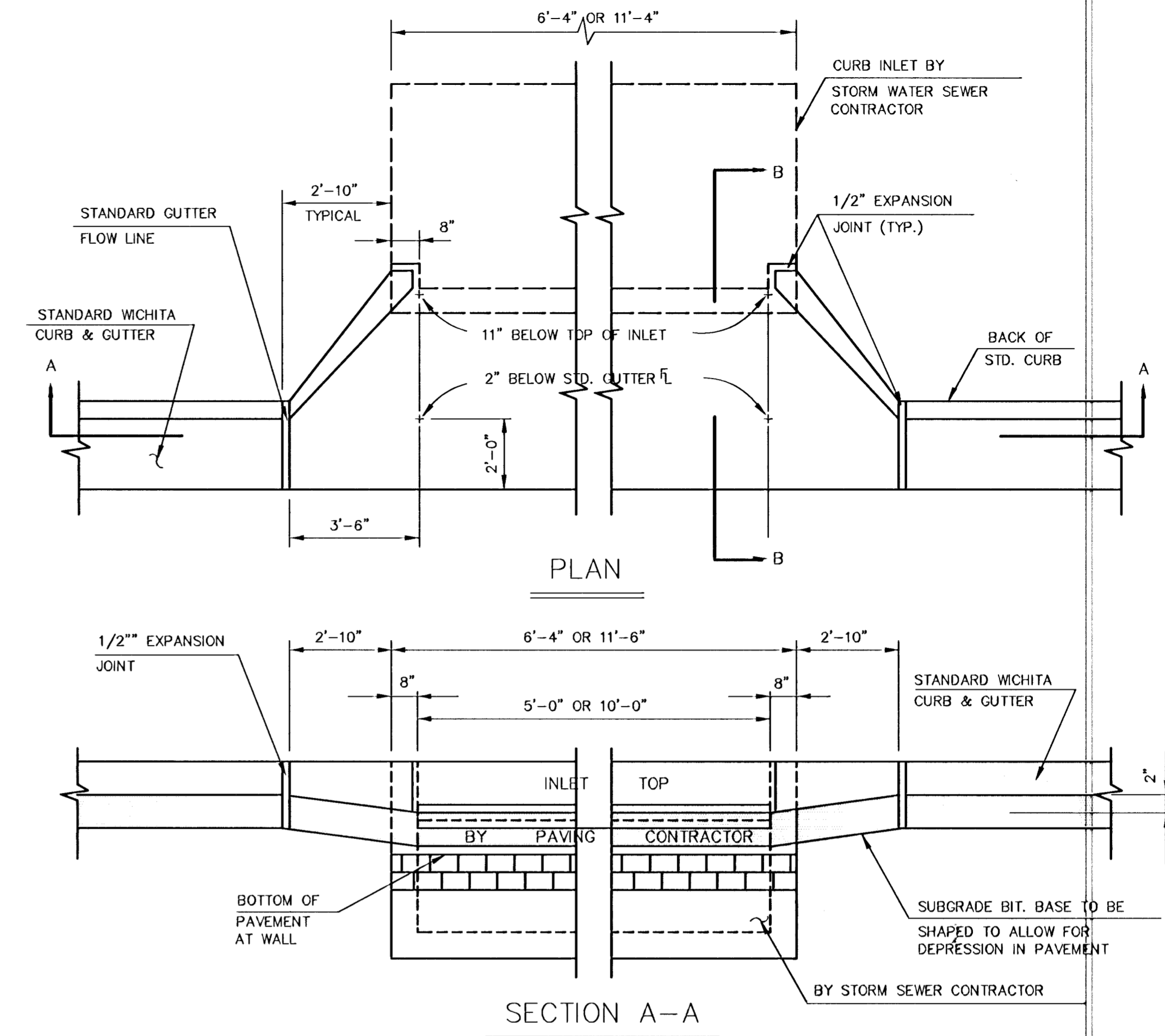


H.C. PAVEMENT SYMBOL

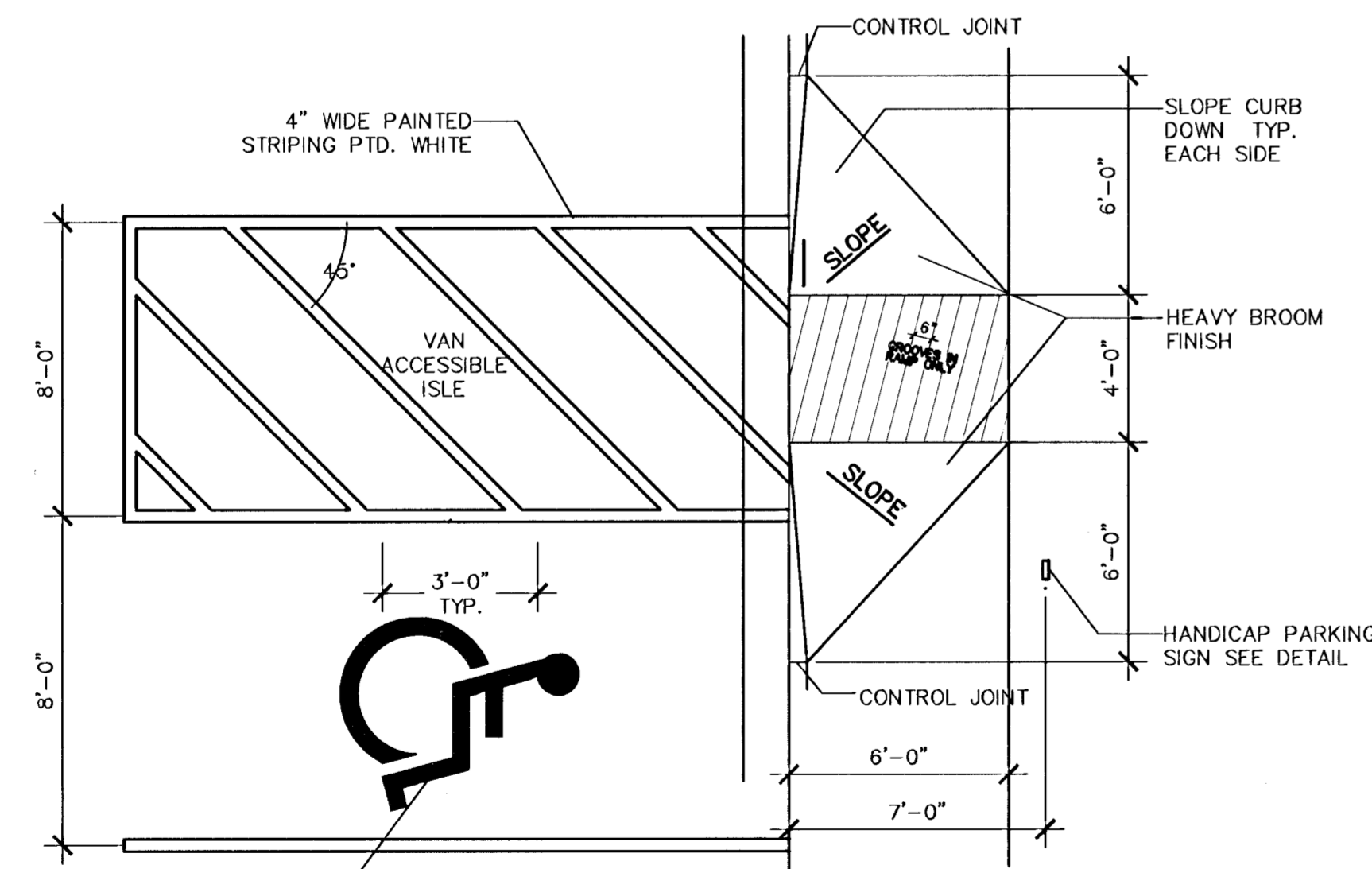
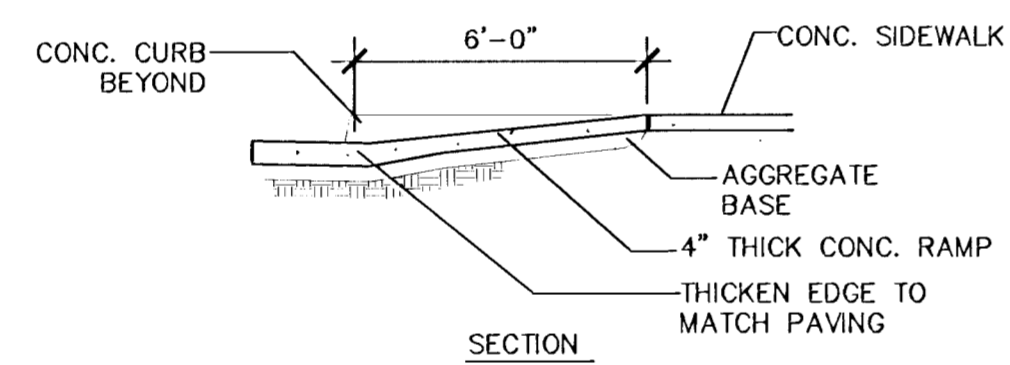


PAVEMENT UNDERDRAIN DETAIL



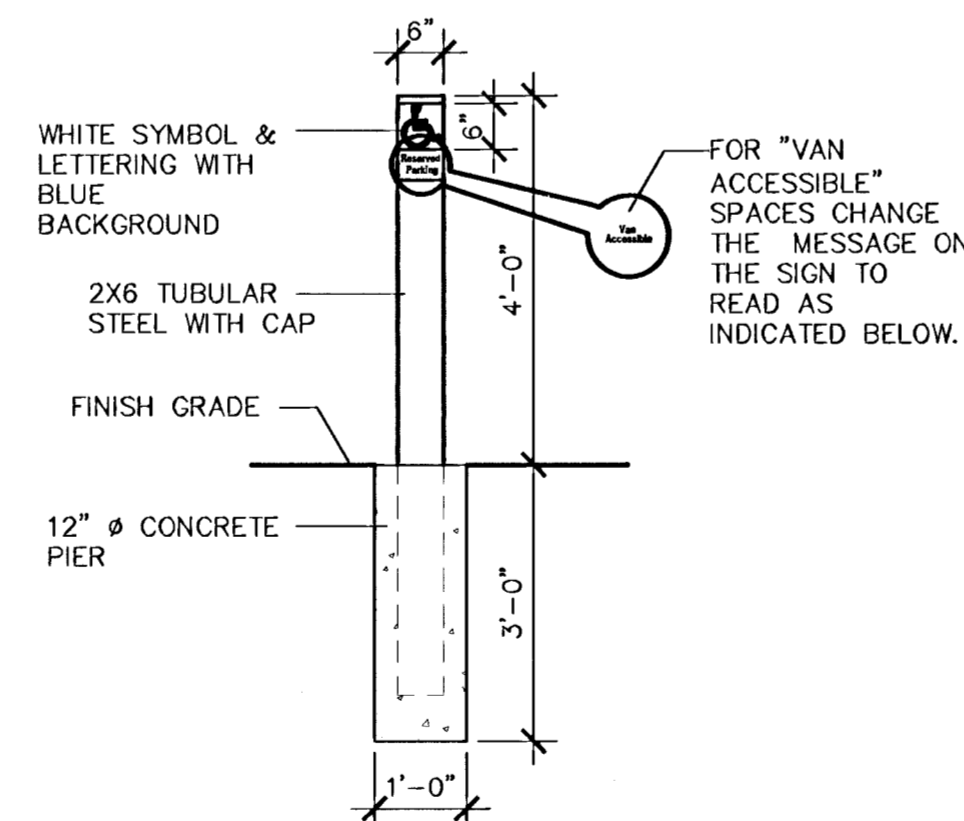
GENERAL NOTES

1. USE THE CONCRETE MIX SPECIFIED FOR CITY OF WICHITA CONCRETE PAVEMENT. ALL EXPOSED EDGES SHALL BE FINISHED WITH AN EDGING TOOL.
2. TYPE 1A INLET HOOKUP WILL BE PAID EACH REGARDLESS OF SIZE.
3. ADDITIONAL CURB & GUTTER CONSTRUCTION NECESSARY TO CONNECT SET BACK INLET TO PAVEMENT WILL BE PAID FOR AT THE UNIT PRICE BID FOR EACH INLET HOOKUP. (BY PAVING CONTRACTOR)

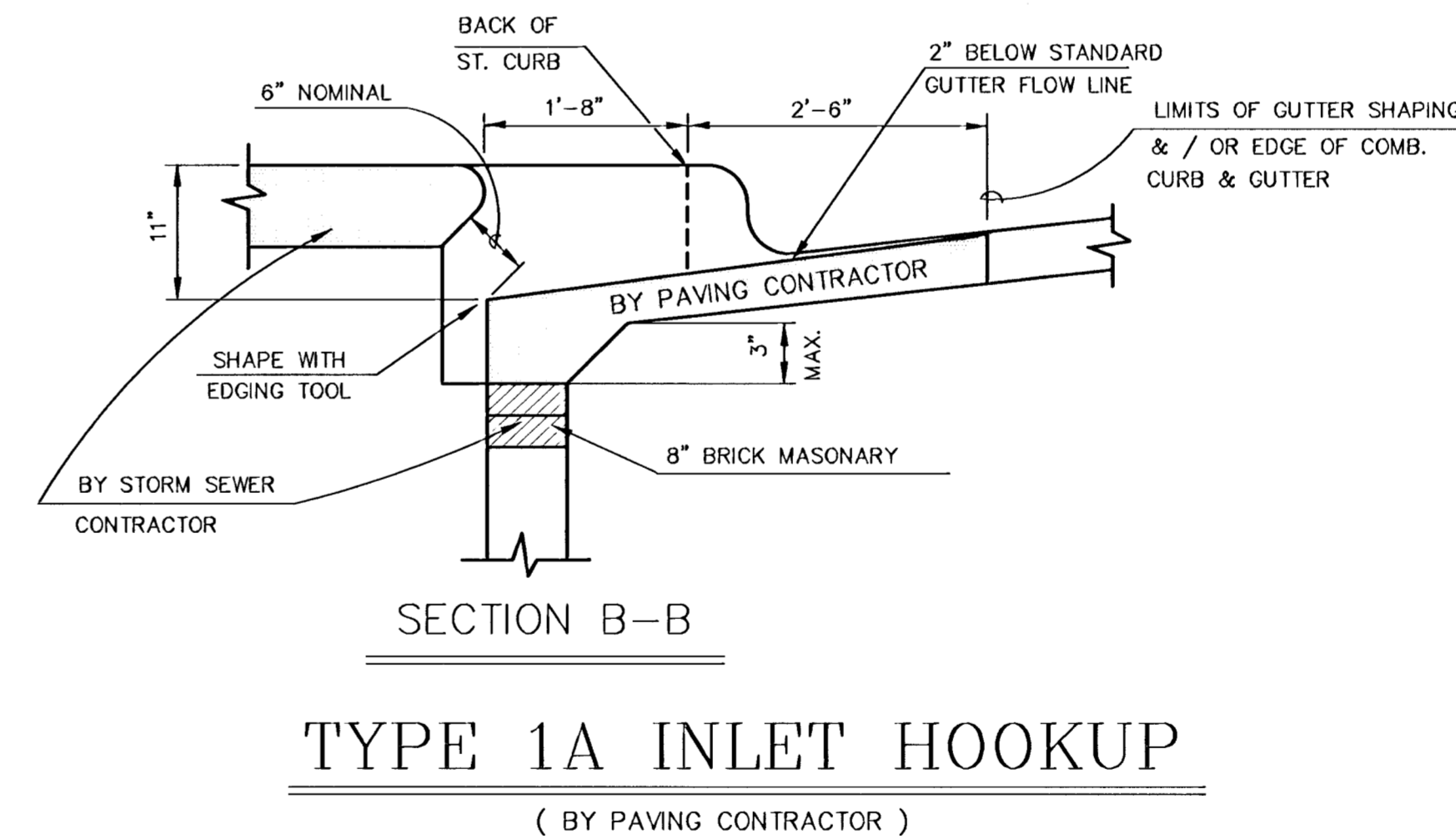


- NOTE:
1. BOTH HANDICAP PARKING SYMBOL & STALL STRIPING TO BE PAINTED WHITE
  2. ALL STRIPING FOR H.C. SYMBOL TO BE 6" ALL OTHER STRIPING TO BE 4" IN WIDTH.

H.C. STALL LAYOUT



H.C. PARKING SIGN



TYPE 1A INLET HOOKUP  
( BY PAVING CONTRACTOR )

<p>GossonLivingston Architect/Engineer 435 West Eugene Wichita, KS 67202 Tel: (316) 261-1900 Fax: (316) 261-3636</p>	<p>MKEC ENGINEERING CONSULTANTS 411 N. WEBB ROAD WICHITA, KS. 67206 316 - 684 - 9600</p>	<b>GROVE PARK IMPROVEMENTS</b> PROJECT NAME			
		<b>PAVEMENT DETAILS</b> SHEET TITLE			
		JTC DESIGN BY:	GJR DRAWN BY:	GJA CHECKED BY:	
		<b>OCTOBER 2001</b> DATE		01060ED6 JOB NO.	CP 503 / 50 SHEET/OF