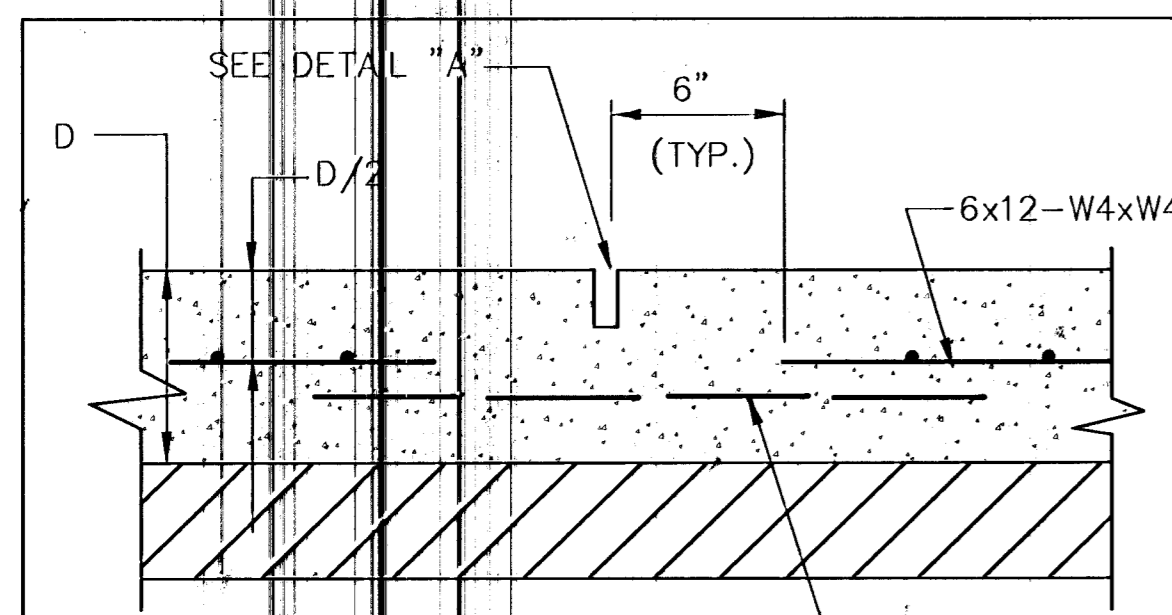
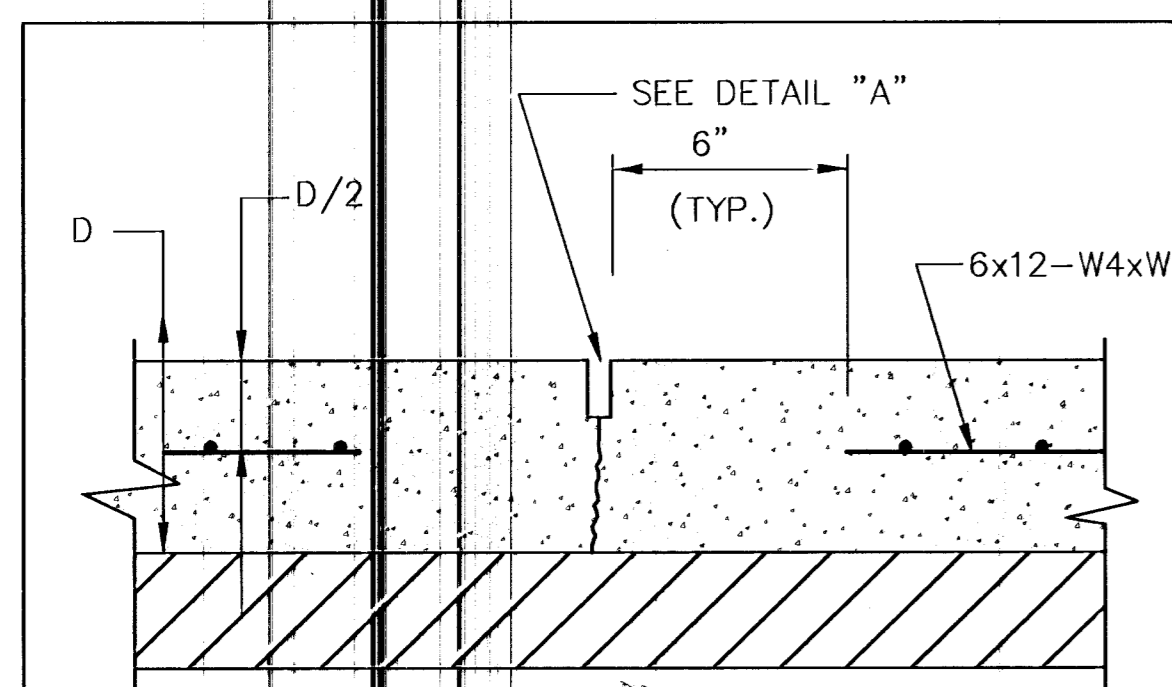


LONGITUDINAL & TRANSVERSE CONSTRUCTION JOINT



SAWED LONGITUDINAL JOINT (L.J.)



SAWED CONTRACTION JOINT (C.J.)

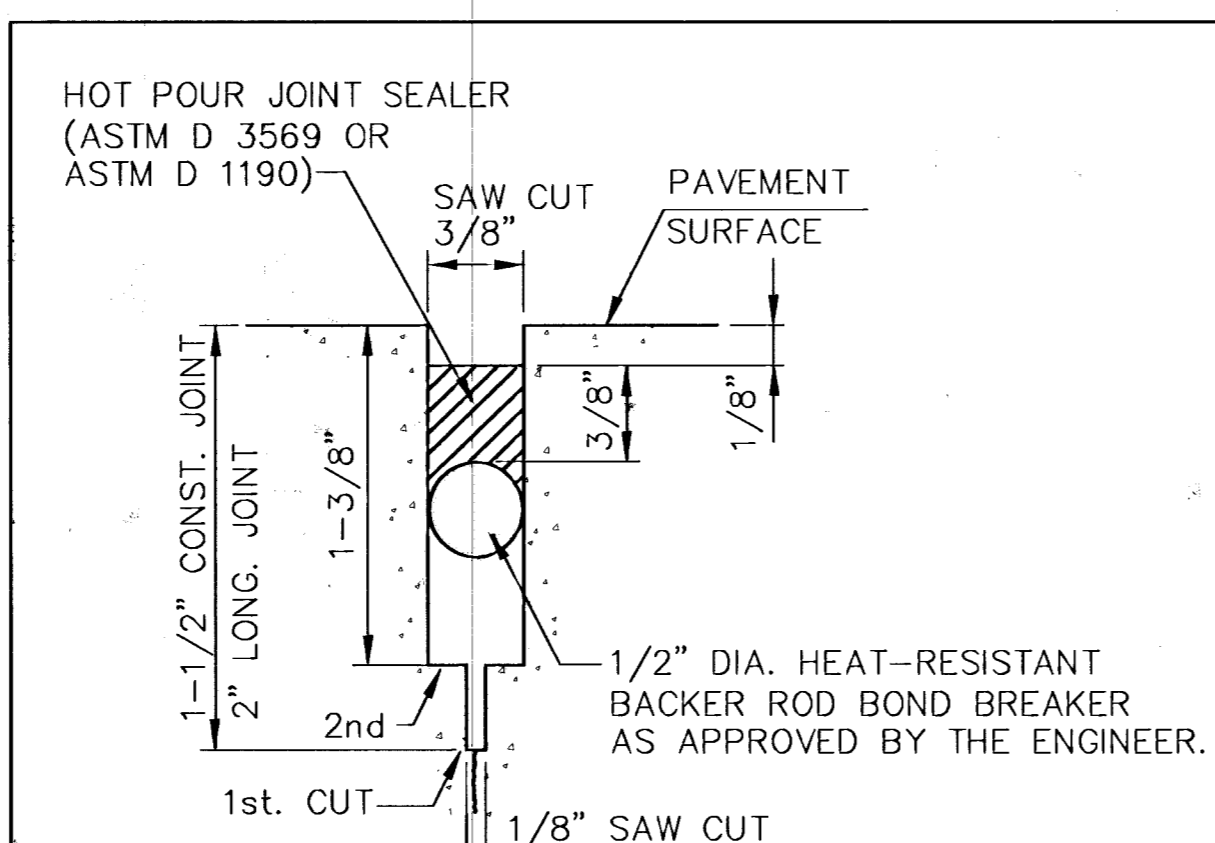
SPECIFICATIONS FOR BASEMENT WATERPROOFING

BASEMENT WALLS AND TOPS BENEATH SIDEWALKS WHICH ARE UNCOVERED DURING CONSTRUCTION SHALL BE PROTECTED FROM MOISTURE AND OTHER DAMAGE DURING AND AFTER CONSTRUCTION OPERATION. A PERMANENT VAPOR PROOFING MEMBRANE SHALL BE INSTALLED ON ALL EXPOSED EXTERIOR BASEMENT SURFACES. THE VAPOR PROOFING MEMBRANE SHALL EXTEND BEYOND THE LIMITS OF THE BASEMENT TOP AND 4' DOWN THE SIDES OF BASEMENT WALLS PROJECTING UNDER THE SIDEWALK. THE VAPOR PROOFING MEMBRANE SHALL TURN UP AT THE BUILDING FACE (4" H) TO THE TOP OF THE NEW WALK.

VAPOR MEMBRANE SHALL BE A SEVEN ELEMENT ASPHALT CORE BOARD WITH A PLASMATIC MATRIX FOR ADDED TENSILE AND FLEXURAL STRENGTH SUSPENDED IN A CORE OF FORTIFIED BITUMINOUS. A REINFORCED CARRIER SHEET ON THE BOTTOM AND ON THE TOP, AN INERT REINFORCING PLY THAT IS WEATHER COATED AND PROTECTED BY A PLASTIC ANTI-STICK SHEET. WATER VAPOR TRANSMISSION (ASTM E-96, METHOD B) SHALL BE 0.00 GRAINS/S.F./HR. AND MULLEN BURST STRENGTH SHALL BE 163 PSI MINIMUM. PREMOULDED MEMBRANE WITH PLASMATIC CORE (PM/PC) MANUFACTURED BY W.R. MEADOWS, INC. MEETS THE ABOVE REQUIREMENTS.

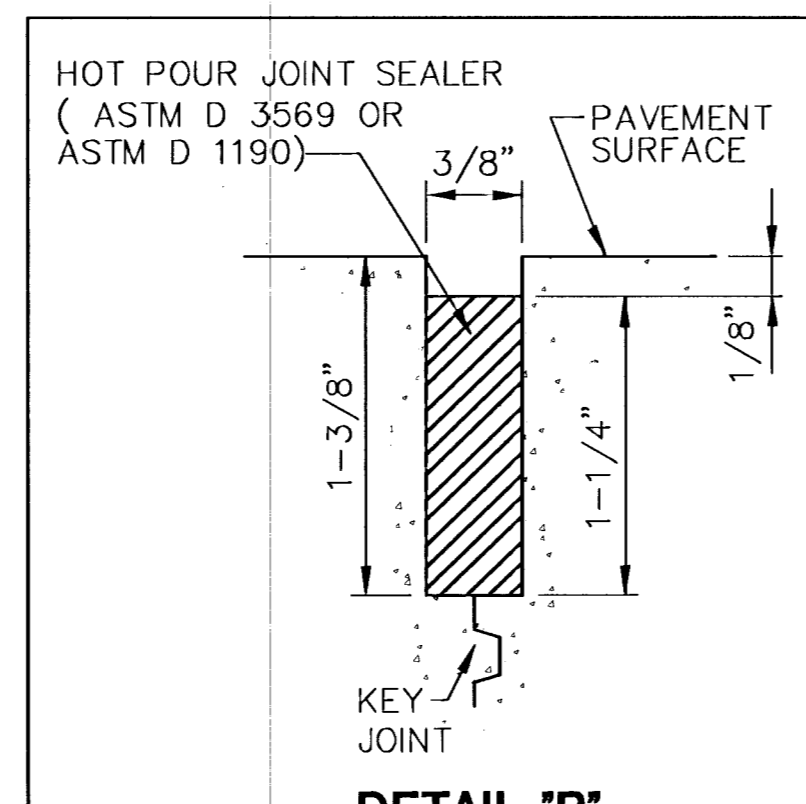
PREPARATION OF THE BASEMENT SURFACES, JOINT SEALING, BONDING AGENT, AND INSTALLATION SHALL BE IN ACCORDANCE WITH THE MANUFACTURER'S RECOMMENDATIONS. IF BASEMENT SURFACES ARE DISCOVERED TO BE UNSUITABLE FOR APPLICATION OF THE PM/PC, THE ENGINEER SHOULD BE NOTIFIED IMMEDIATELY.

THE INSTALLER SHALL BE A FIRM WITH AT LEAST 3 YEARS EXPERIENCE AND 5 WATERPROOFING PROJECTS SIMILAR TO THE REQUIREMENTS OF THIS PROJECT WITH SATISFACTORY PERFORMANCE AND WHICH IS APPROVED BY THE WATERPROOFING MATERIALS MANUFACTURER.



NOTE:
INITIAL CUT SHALL BE 1/8" WIDE.
3/8" CUT SHALL BE SAWED PRIOR TO SEALING, AFTER THE POSSIBILITY IF EDGE RAVELING.

DETAIL "A"



DETAIL "B"

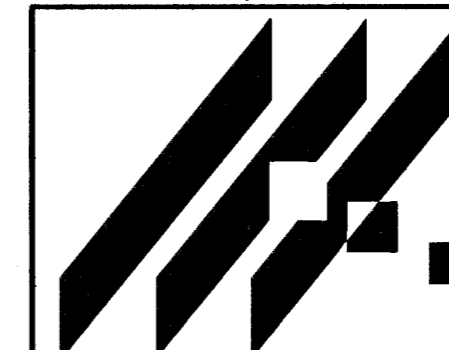
GENERAL NOTES

- CONTRACTOR WILL BE REQUIRED TO PROVIDE A MINIMUM ADVANCE NOTICE OF FORTY-EIGHT (48) HOURS TO UTILITY COMPANIES PRIOR TO STARTING ANY EXCAVATION AS FOLLOWS:
KANSAS ONE-CALL 1-800-344-7233
OR 687-2470 (LOCAL WCHITA)

THE CONTRACTOR MUST NOTIFY THE FOLLOWING IN CASE OF EMERGENCY:

SOUTHWESTERN BELL TELEPHONE COMPANY 1-800-246-8464 (press ## for assistance)
CABLEVISION 262-0661
KANSAS GAS SERVICE 383-8650
KGE 383-8600
CITY OF WICHITA WATER & SEWER 268-4908
PEOPLES NATURAL GAS 1-800-303-0357
MCI (MICHAEL WARNER) 214-918-1977
CITY OF WICHITA TRAFFIC MAINTENANCE (Jim Parks) 268-4033/4034
- THE CONTRACTOR SHALL GIVE ALL PROPERTY OWNERS AND/ OR TENANTS OF DEVELOPED PROPERTY ADJUTING THE PROJECT LIMITS A MINIMUM OF TEN (10) DAYS ADVANCE NOTICE PRIOR TO START OF CONSTRUCTION.
- UTILITY SERVICE LINES, POLES, VALVE BOXES, METERS, AND ETCETERA ARE TO BE ADJUSTED AS NECESSARY BY OTHERS PRIOR TO CONSTRUCTION UNLESS THE PLANS SPECIFICALLY CALL FOR THEIR ADJUSTMENT BY THE CONTRACTOR OR UNLESS THE PLANS OR CONTRACT DOCUMENTS SPECIFICALLY IDENTIFY A UTILITY TO BE ADJUSTED BY ITS OWNER DURING CONSTRUCTION. EXISTING UTILITIES AND THEIR LOCATION, AS SHOWN ON THE PLANS, REPRESENT THE BEST INFORMATION OBTAINABLE FOR DESIGN. THE CONTRACTOR WILL BE REQUIRED TO WORK AROUND EXISTING UTILITIES WITHIN THE RIGHT-OF-WAY WHICH DO NOT CONFLICT WITH PROPOSED CONSTRUCTION.
- ALL ADJACENT BUILDINGS, STRUCTURES, PARKING LOTS, DRIVES, STREET PAVEMENTS, UTILITY LINES, UTILITY STRUCTURES AND APPURTENANCES OTHER THAN SHOWN FOR REPLACEMENT SHALL BE PROTECTED FROM DAMAGE DURING CONSTRUCTION OF THE PROJECT. DAMAGED ITEMS SHALL BE REMOVED AND REPLACED BY THE CONTRACTOR AT NO ADDITIONAL COST TO THE OWNER. SHEETING AND SHORING MAY BE REQUIRED TO PROTECT THE ITEMS MENTIONED ABOVE.
- A FULL DEPTH SAW CUT OF EXISTING SURFACE COURSES OR ONE-FOURTH THE DEPTH OF THE EXISTING TOTAL PAVEMENT THICKNESS SHALL BE PROVIDED AT LOCATIONS WHERE PROPOSED CONSTRUCTION ADJUTS AN EXISTING SURFACE COURSE OR PAVEMENT FOR WHICH PARTIAL REMOVAL OF THAT SURFACE OR PAVEMENT IS REQUIRED. SAWS CUT TO FACILITATE REMOVAL WITHIN THREE (3) FEET OF EXISTING JOINTS WILL NOT BE PERMITTED AND FOR SUCH INSTANCES THE LIMITS OF REMOVAL SHALL EXTEND TO THE EXISTING JOINT. SUCH SAW CUTS WILL NOT BE PAID FOR DIRECTLY AND THIS COST SHALL BE CONSIDERED AS SUBSIDIARY TO THE REMOVAL OF THE SURFACE OR PAVEMENT.
- RUBBLE FROM THE REMOVAL OF PAVEMENT, MISCELLANEOUS STRUCTURES AND EXCESS EXCAVATION WHICH IS TO BE WASTED SHALL BE DISPOSED OF ON SITES TO BE PROVIDED BY THE CONTRACTOR. THESE SITES SHALL BE APPROVED BY THE ENGINEER AS TO SUITABILITY, APPEARANCE AND SITE LOCATION. LOCATIONS THAT, IN THE OPINION OF THE ENGINEER, WILL LEAVE AN UNSIGHTLY APPEARANCE WILL NOT BE APPROVED. ALL DISPOSAL SITES MUST BE APPROVED BY THE KANSAS DEPARTMENT OF HEALTH AND ENVIRONMENT. MATERIAL EITHER STOCKPILED OR DISPOSED OF IN A FLOOD PLAIN WOULD REQUIRE A KANSAS STATE BOARD OF AGRICULTURE PERMIT. ANY MATERIAL DUMPED IN WATERS OF THE UNITED STATES OR WETLANDS IS SUBJECT TO U.S. CORPS OF ENGINEERS PERMITTING REGULATIONS. ANY MATERIAL BURIED OR STOCKPILED BEYOND APPROVED CONSTRUCTION LIMITS WOULD REQUIRE ADDITIONAL ARCHEOLOGICAL INVESTIGATIONS UNLESS BURIED IN A PREVIOUSLY APPROVED BORROW LOCATION.
- THE CITY OF WICHITA'S SEWER MAINTENANCE DIVISION OF THE DEPARTMENT OF WATER AND WATER POLLUTION CONTROL HAS TELEVISED SEWERS WITHIN THE LIMITS OF THE PROJECT. THE DIVISION SHALL BE NOTIFIED AND AFFORDED THE OPPORTUNITY TO RE-TELEVISE SEWER LINES AFTER SUBGRADE WORK HAS BEEN COMPLETED AND PRIOR TO PAVEMENT CONSTRUCTION TO DETERMINE IF SUCH SEWER LINES HAVE BEEN DAMAGED BY THE CONTRACTOR'S OPERATIONS. DAMAGED SEWER LINES WILL BE REPAIRED BY THE CONTRACTOR, AS DIRECTED BY THE ENGINEER, AT THE CONTRACTOR'S EXPENSE. TELEVISION LOGS ARE AVAILABLE FOR INSPECTION BY THE CONTRACTOR DURING NORMAL OFFICE HOURS AT THE SEWER MAINTENANCE DIVISION'S OFFICE AT CITY HALL.
- PROPERTIES WITHIN THE PROJECT LIMITS MAY HAVE PRIVATE IMPROVEMENTS, I.E., SPRINKLER SYSTEMS, FENCES, PLANTERS, SIGNS, ETC., IN PUBLIC RIGHT-OF-WAY WHICH CONFLICT WITH NEW CONSTRUCTION. CONTRACTOR WILL BE REQUIRED TO REMOVE SUCH IMPROVEMENTS SHOULD THEY NOT BE REMOVED BY THEIR OWNER AT THE TIME OF CONSTRUCTION OF THE PROJECT. THE CONTRACTOR WILL BE REQUIRED TO SALVAGE ALL SPRINKLER HEADS, VALVES AND OTHER REUSABLE MATERIALS AND GIVE SUCH TO THEIR OWNER. IMPROVEMENTS NOT IN CONFLICT WITH NEW CONSTRUCTION SHALL BE PROTECTED FROM DAMAGE AND SHALL REMAIN IN PLACE. ALL WORK IN CONNECTION WITH REMOVAL OF THESE ITEMS SHALL BE CONSIDERED AS SUBSIDIARY TO THE PROJECT.
- DRIVEWAY WIDTHS AND LOCATIONS SHOWN ARE TENTATIVE. CONTRACTOR WILL BE REQUIRED TO OBTAIN A PROPERLY EXECUTED DRIVEWAY REQUEST FORM SIGNED BY PROPERTY OWNER OR HIS AUTHORIZED REPRESENTATIVE VERIFYING SUCH DRIVEWAY WIDTHS AND LOCATIONS. SUCH FORMS SHALL BE SUBMITTED TO THE ENGINEER FOR HIS REVIEW AND APPROVAL.
- NO MORE THAN 4 DRIVES 30 FEET IN WIDTH, OR EQUIVALENT COMBINATIONS THEREOF, ARE TO BE CONSTRUCTED WITH THIS PROJECT.
- TREES AND SHRUBS IN PUBLIC RIGHT-OF-WAY WHICH ARE IN DIRECT CONFLICT WITH PROPOSED NEW CONSTRUCTION SHALL BE REMOVED BY THE CONTRACTOR WITH THE ENGINEER'S APPROVAL. TREES AND SHRUBS WHICH ARE NOT IN DIRECT CONFLICT WITH PROPOSED NEW CONSTRUCTION SHALL BE SAVED AND PROTECTED FROM DAMAGE.
- THE CONTRACTOR SHALL BE RESPONSIBLE FOR PRESERVING PROPERTY IRONS. THE CONTRACTOR WILL BE REQUIRED TO RE-ESTABLISH ANY PROPERTY IRONS WHICH ARE DAMAGED OR DESTROYED BY HIS CONSTRUCTION OPERATIONS. SUCH IRONS SHALL BE RE-ESTABLISHED BY A REGISTERED LAND SURVEYOR IN ACCORDANCE WITH STATE LAWS.
- THE CONTRACTOR SHALL ADJUST WATER VALVE AND FIRE HYDRANTS AS DIRECTED BY THE ENGINEER. THE WATER DEPARTMENT SHALL FIELD LOCATE WATER VALVES ONE TIME DURING CONSTRUCTION WHEN REQUESTED BY THE CONTRACTOR. IT SHALL BE THE CONTRACTOR'S RESPONSIBILITY TO PRESERVE SUCH FIELD LOCATIONS DURING THE CONSTRUCTION PROCESS. WATER VALVES OR FIRE HYDRANTS DAMAGED DURING CONSTRUCTION SHALL BE REPAIRED BY THE CONTRACTOR AT HIS OWN EXPENSE.
- THE CONTRACTOR SHALL INSTALL AND OPERATE A TEMPORARY TRAFFIC SIGNAL AT THE MARKET, BROADWAY, TOPEKA, AND DOUGLAS INTERSECTIONS. THE CONTRACTOR SHALL PREPARE PLANS FOR TEMPORARY TRAFFIC SIGNALS IN CONSULTATION WITH THE CITY TRAFFIC ENGINEER, AND IN CONFORMANCE WITH THE CONTRACTOR'S CONSTRUCTION TRAFFIC CONTROL PLAN. COST OF TEMPORARY TRAFFIC SIGNALS SHALL BE SUBSIDIARY TO THE BID ITEM FOR TRAFFIC SIGNAL INSTALLATION. EXISTING TRAFFIC SIGNAL APPURTENANCES, EXCEPT AS OTHERWISE NOTED ON THE PLANS, SHALL BE REMOVED BY CONTRACTOR AND TAKEN TO THE CITY YARD. NOTIFY TRAFFIC MAINTENANCE 14 DAYS PRIOR TO START OF CONSTRUCTION.
- STREET SIGNS, STREET FURNITURE, ETCETERA REMOVED BY THE CONTRACTOR SHALL BE TAKEN TO THE CITY YARD FOR STORAGE.
- ALL POLE FOOTINGS AND/OR FOUNDATIONS LOCATED WITHIN THE CONSTRUCTION LIMITS SHALL BE REMOVED TO A MINIMUM DEPTH OF 18" BELOW THE SUBGRADE IN AREAS TO BE PAVED OR TO A MINIMUM OF 18" BELOW THE GROUNDLINE IN AREAS TO BE SEEDED.
- INSTALL NEW STANDARD MANHOLE FRAMES AND COVERS ON ALL EXISTING STORM WATER AND SANITARY SEWER MANHOLES LOCATED IN NEW PAVEMENT. OLD FRAMES AND COVERS SHALL BE TAKEN TO THE CITY YARD FOR SALVAGE.
- ALL ELEVATIONS SHOWN ARE CITY DATUM. CITY DATUM = NGVD - 1187.40
- CONTRACTOR SHALL ADJUST SIDEWALK ALIGNMENT IF NECESSARY TO CLEAR EXISTING UTILITIES AND IMPROVEMENTS AND LANDSCAPING (GAS METERS, TELEPHONE PEDESTALS, TREES ETC.) LOCATED AT RIGHT-OF-WAY LINE, AND AS APPROVED BY THE ENGINEER. PAYMENT FOR ALIGNMENT ADJUSTMENT SHALL BE SUBSIDIARY TO THE BID ITEM FOR SIDEWALK CONCRETE BANDS.
- NOTIFY CITY OF WICHITA TRAFFIC MAINTENANCE 14 DAYS PRIOR TO START OF CONSTRUCTION FOR REMOVAL OF PARKING METERS.
- CONTRACTOR SHALL NOTIFY KGE (SHANE PRICE, 261-6865) FOR ANY COORDINATION OF CONFLICTS WITH KGE AND 48 HOURS PRIOR TO ANY WORK REQUIRING ACCESS TO KGE VAULTS, MANHOLES, OR POWER SUPPLY LOCATIONS.
- CONTRACTOR SHALL ADJUST WATER METER BOXES AND CONCRETE WATER METER/VALVE VAULTS AS REQUIRED TO MATCH ELEVATIONS OF ADJOINING PAVEMENT. PAYMENT SHALL BE SUBSIDIARY TO THE PROJECT.
- WATER SERVICE CONNECTIONS, AS SHOWN ON THE DRAWINGS, REPRESENT THE BEST INFORMATION OBTAINABLE FOR DESIGN. AT LOCATIONS DETERMINED BY THE ENGINEER, THE CONTRACTOR SHALL REPLACE THE EXISTING CONNECTIONS WITH NEW MATERIALS TO MEET CURRENT CODE AND PRACTICE. WORK SHALL BE COORDINATED WITH THE PROJECT FOR WATER SYSTEM IMPROVEMENTS #448-88965. PAYMENT SHALL BE SUBSIDIARY TO THE PROJECT.

REVISED 4/99



STREETSCAPES
PROJECT NAME

GENERAL NOTES & MISC. DETAILS
SHEET TITLE

MID-KANSAS ENGINEERING
CONSULTANTS, INC.
411 N. WEBB ROAD
WICHITA, KS. 67206
316-684-9600

DCH
DESIGN BY:

WNJ
DRAWN BY:

DCH
CHECKED BY:

MARCH 1999
DATE

9210NOTE
JOB NO.

2 / 61
SHEET/OF

G:\CIVIL\9210\9210NOTE.DWG Tue May 11 15:25:01 1999