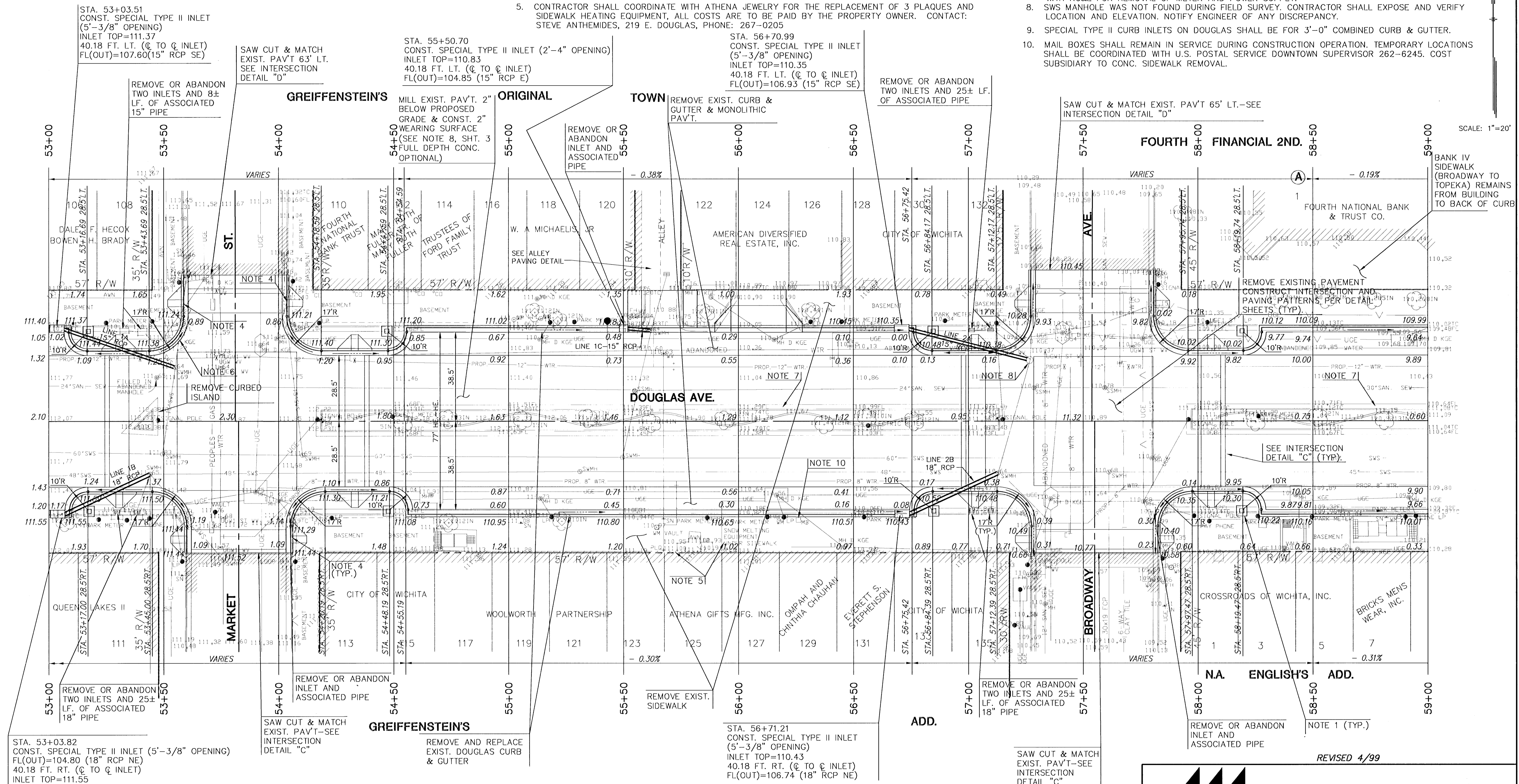


**NOTES:**

- SEE LS SERIES SHEETS FOR TOWER AND SIDEWALK CONSTRUCTION, DETAILS AND PATTERNS.
- ALL STATIONING, RADII, PAVEMENT WIDTHS AND OFFSETS ARE MEASURED TO THE HIGH EDGE OF CURB, UNLESS NOTED OTHERWISE. ELEVATIONS ARE HIGH EDGE AND TOP OF CURB.

- ENTRANCE CONSTRUCTION PER APPLICABLE DETAIL SHEETS. CONCRETE THICKNESS SHALL BE 6" MIN. OVER 6" CRUSHED ROCK ON GEOGRID REINFORCEMENT. PROVIDE SIDEWALK AT EACH ENTRANCE WITH 1% TO 2% PER FOOT SLOPE TOWARDS STREET.
- ADJUST RAMP ELEVATION AT BACK OF CURB, IF NECESSARY, TO ALLOW CONCRETE PAVER INSTALLATION ABOVE BASEMENT TOP AND TO PROVIDE POSITIVE DRAINAGE.
- CONTRACTOR SHALL COORDINATE WITH ATHENA JEWELRY FOR THE REPLACEMENT OF 3 PLAQUES AND SIDEWALK HEATING EQUIPMENT, ALL COSTS ARE TO BE PAID BY THE PROPERTY OWNER. CONTACT: STEVE ANTHEMIDES, 219 E. DOUGLAS, PHONE: 267-0205

- CITY TV LOGS SHOW 15" RCP WITH OFFSET JOINT LOCATED APPROX. 12' N. OF SWMH AT STA. 53+55 L. REMOVE AND REPLACE APPROX. 40 LF. OF 15" RCP. MATCH EXISTING FLOWLINES AT CURB INLET AND SWMH. PAYMENT SUBSIDIARY TO BID ITEM 15" RCP.
- REMOVE CURBED MEDIAN, PLANTINGS, BRICKWALL, AND ELECTRICAL SYSTEM. COORDINATE WITH KC&E FOR REMOVAL OF METER AND POWER SUPPLY.
- SWS MANHOLE WAS NOT FOUND DURING FIELD SURVEY. CONTRACTOR SHALL EXPOSE AND VERIFY LOCATION AND ELEVATION. NOTIFY ENGINEER OF ANY DISCREPANCY.
- SPECIAL TYPE II CURB INLETS ON DOUGLAS SHALL BE FOR 3'-0" COMBINED CURB & GUTTER.
- MAIL BOXES SHALL REMAIN IN SERVICE DURING CONSTRUCTION OPERATION. TEMPORARY LOCATIONS SHALL BE COORDINATED WITH U.S. POSTAL SERVICE DOWNTOWN SUPERVISOR 262-6245. COST SUBSIDIARY TO CONC. SIDEWALK REMOVAL.



SCALE: 1"=20'

STA. 53+03.82  
CONST. SPECIAL TYPE II INLET (5'-3/8" OPENING)  
FL(OUT)=104.80 (18" RCP NE)  
40.18 FT. RT. (C TO C INLET)  
INLET TOP=111.55

SAW CUT & MATCH  
EXIST. PAV'T-SEE  
INTERSECTION  
DETAIL "C"

GREIFFENSTEIN'S  
REMOVE AND REPLACE  
EXIST. DOUGLAS CURB  
& GUTTER

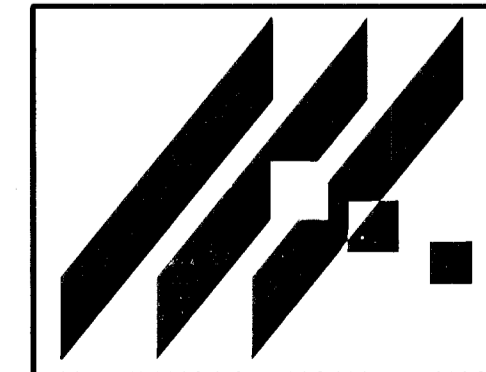
STA. 56+71.21  
CONST. SPECIAL TYPE II INLET  
(5'-3/8" OPENING)  
INLET TOP=110.43  
40.18 FT. RT. (C TO C INLET)  
FL(OUT)=106.74 (18" RCP NE)

SAW CUT & MATCH  
EXIST. PAV'T-SEE  
INTERSECTION  
DETAIL "C"

REVISED 4/99

DRIVE ENTRANCES - SEE GENERAL NOTES				
LOCATION	TYPE	W	C WG	NOTES
56+09 LT.	FULL RAMP COMMERCIAL	24'	MATCH EXIST.	SEE NOTE 3

See Dimension Changes, Sheet 7.



**STREETSCAPES**  
PROJECT NAME

**DOUGLAS AVE. STA. 53+00 TO 59+00**  
SHEET TITLE

MID-KANSAS ENGINEERING  
CONSULTANTS, INC.  
411 N. WEBB ROAD  
WICHITA, KS. 67206  
316-684-9600

DSS DESIGN BY:	WNJ DRAWN BY:	RLB CHECKED BY:
OCT. 1995 DATE	92010 JOB NO.	8 / 61 SHEET/OF