

BANK IV SIDEWALK (BROADWAY TO TOPEKA) REMAINS FROM BUILDING TO BACK OF CURB.

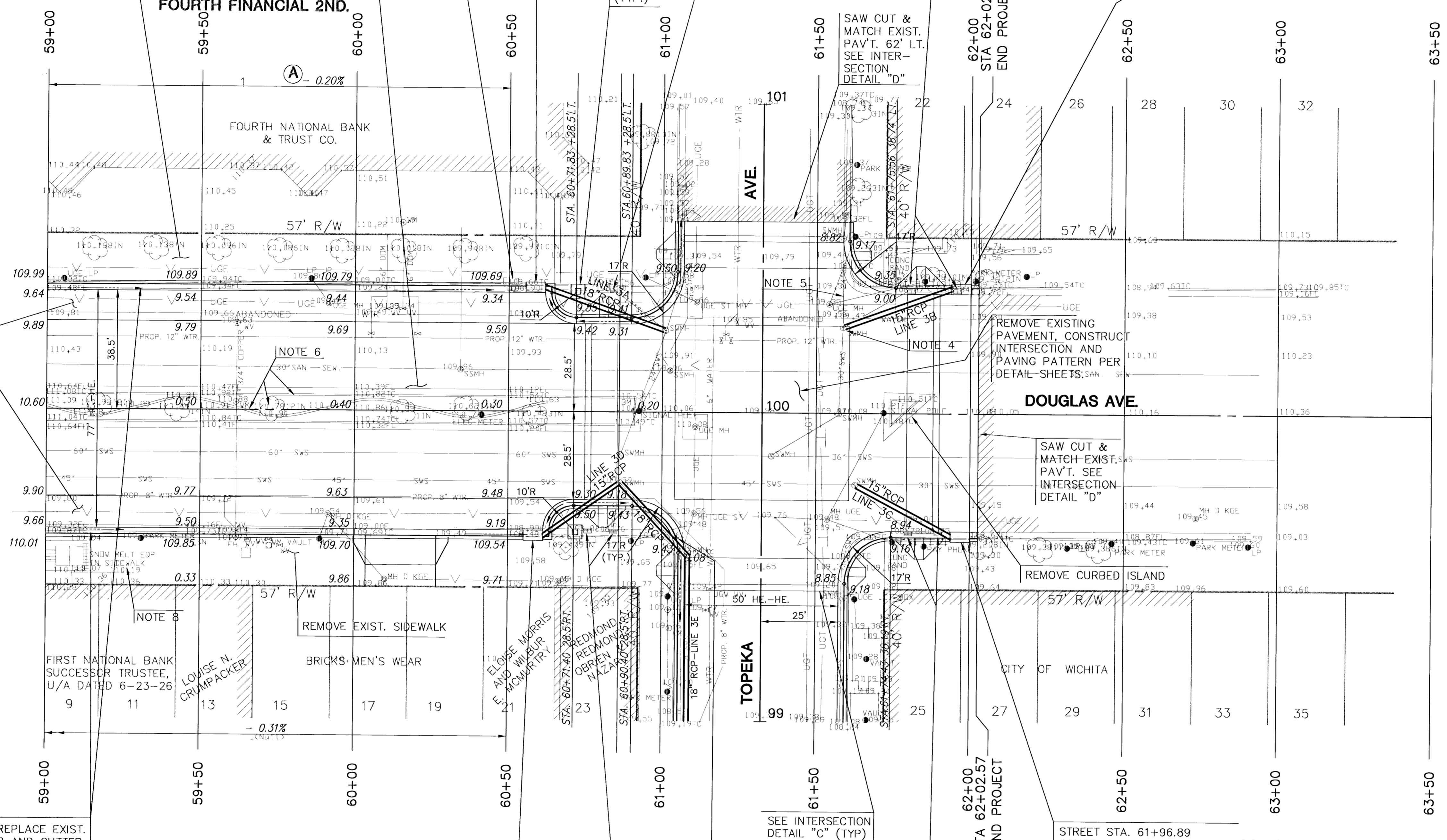
REMOVE OR ABANDON INLET AND 33± LF OF ASSOCIATED PIPE

MILL EXIST. PAV'T. 2" BELOW PROPOSED GRADE & CONST. 2" WEARING SURFACE (SEE NOTE 8, SHT. 3 FULL DEPTH CONC. OPTIONAL)

STREET STA. 60+58.64
CONST. SPECIAL TYPE II INLET (5'-3/8" OPENING)
INLET TOP=109.69
FL(OUT)=101.91 (18" RCP SE)
40.18' LT. (☉ TO ☉ INLET)

REMOVE OR ABANDON TWO INLETS AND 40± LF OF ASSOCIATED 15" PIPE

STREET STA. 61+96.89
CONST. SPECIAL TYPE II INLET (5'-3/8" OPENING)
INLET TOP=109.24
FL(OUT)=104.57 (15" RCP SW)
40.39' LT. (☉ TO ☉ INLET)



REMOVE EXIST. CURB AND GUTTER AND MONOLITHIC PAV'T.

REMOVE AND REPLACE EXIST. DOUGLAS CURB AND GUTTER

STREET STA. 60+58.23
CONST. SPECIAL TYPE II INLET (5'-3/8" OPENING)
INLET TOP=109.54
FL(OUT)=107.00(15" RCP NE)
40.18' RT (☉ TO ☉ INLET)

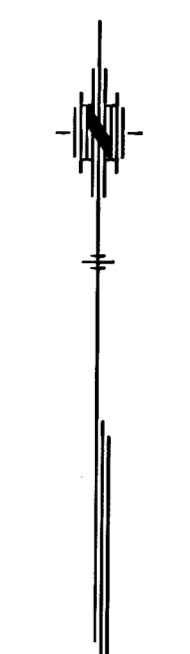
REMOVE OR ABANDON TWO INLETS AND 25± LF OF ASSOCIATED 15" PIPE

REMOVE OR ABANDON TWO INLETS AND 30± LF OF ASSOCIATED 15" PIPE

NOTES:

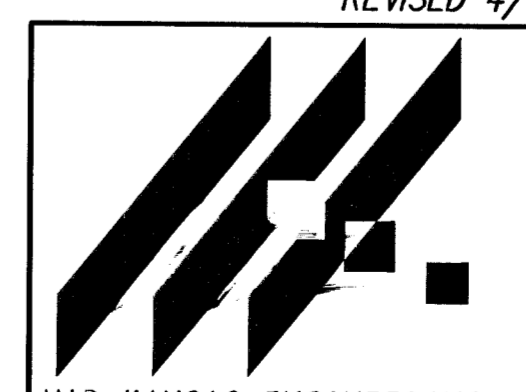
- SEE LS SERIES SHEETS FOR TOWER AND SIDE-WALK CONSTRUCTION, DETAILS AND PATTERNS.
- ALL STATIONING, RADII, PAVEMENT WIDTHS AND OFFSETS ARE MEASURED TO THE HIGH EDGE OF CURB, UNLESS NOTED OTHERWISE. ELEVATIONS ARE HIGH EDGE AND TOP OF CURB.
- ENTRANCE CONSTRUCTION PER APPLICABLE DETAIL SHEETS. CONCRETE THICKNESS SHALL BE 6" MIN. OVER 6" CRUSHED ROCK ON GEOGRID REINFORCEMENT. PROVIDE SIDEWALK AT EACH ENTRANCE WITH 1% TO 2% PER FOOT SLOPE TOWARDS STREET.
- MANHOLE WAS NOT FOUND DURING FIELD SURVEY. CONTRACTOR SHALL EXPOSE AND VERIFY LOCATION AND ELEVATION OF EXISTING PIPES. NOTIFY ENGINEER OF ANY DISCREPANCY. RESHAPE EXISTING INLET TO PROVIDE A SMOOTH FLOW, COST SUBSIDIARY TO BID ITEM FOR PIPE INSTALLATION.
- CITY TV LOGS SHOW 24" SWS WITH SAG BETWEEN SWMH'S AT STA. 61+61 L. REMOVE AND REPLACE APPROX. 30 LF. OF 24" RCP. MATCH EXISTING FLOWLINES AT SWMH'S. PAYMENT SUBSIDIARY TO BID ITEM FOR 24" RCP.
- REMOVE CURBED MEDIAN, BRICK WALL, PLANTINGS AND ELECTRICAL SYSTEM. COORDINATE WITH KG&E FOR REMOVAL OF POWER SUPPLY AND METER.
- SPECIAL TYPE II CURB INLETS ON DOUGLAS SHALL BE FOR 3'-0" COMBINED CURB AND GUTTER.
- REMOVE OR ABANDON SNOW MELTING EQUIPMENT.

SCALE: 1"=20'



DRIVE ENTRANCES - SEE GENERAL NOTES				
LOCATION	TYPE	W	☉ WG	NOTES
60+15 RT.	FULL RAMP COMMERCIAL	24'	MATCH EXIST.	SEE NOTE 3

See Dimension Changes, Sheet 7.



STREETSCAPES
PROJECT NAME

DOUGLAS AVE. STA. 59+00 TO 63+00
SHEET TITLE

MID-KANSAS ENGINEERING CONSULTANTS, INC.
411 N. WEBB ROAD
WICHITA, KS. 67206
316-684-9600

DSS
DESIGN BY:

WNU
DRAWN BY:

RLB
CHECKED BY:

OCT 1995
DATE

92010
JOB NO.

9 / 61
SHEET/OF