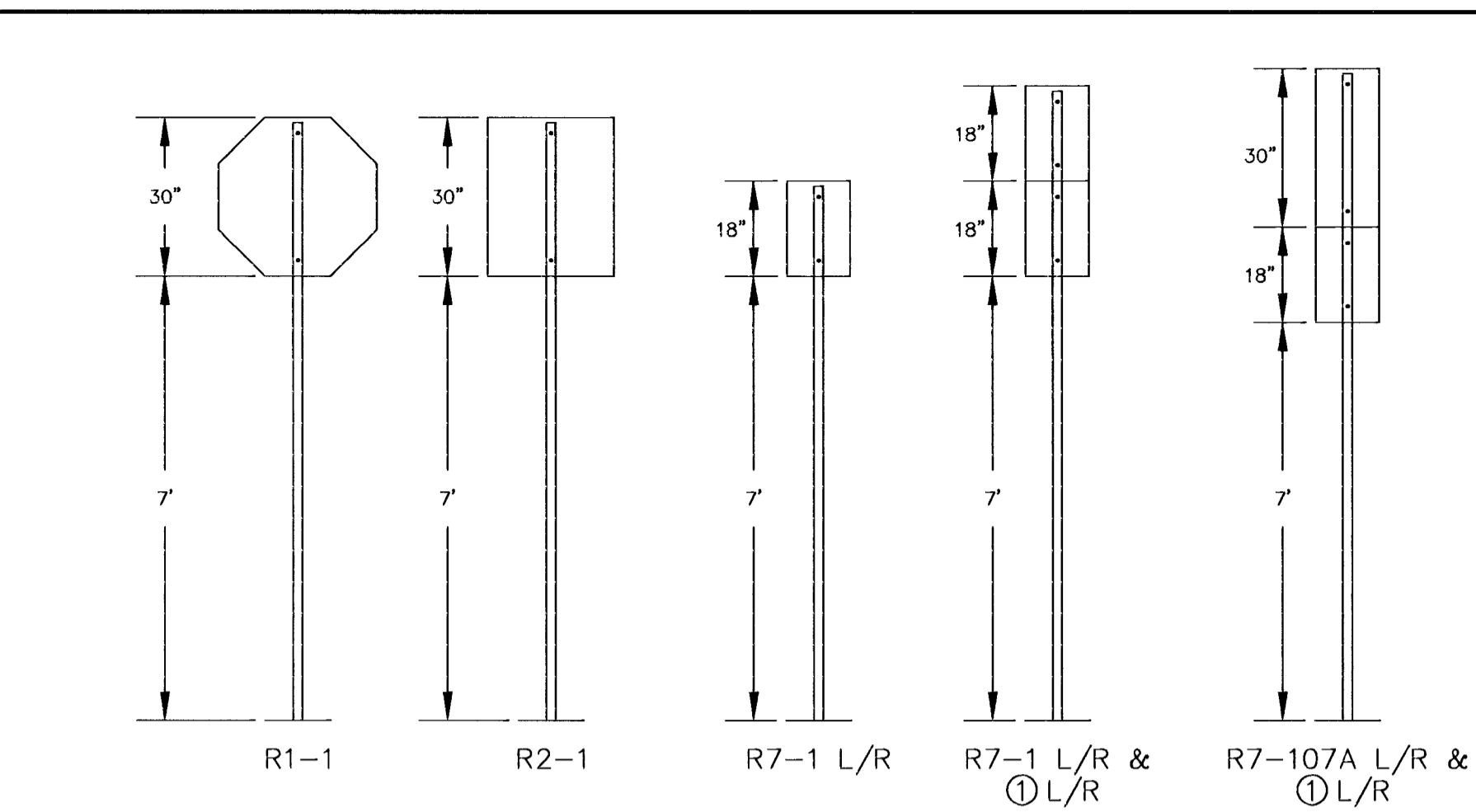


STATION	LOCATION	SIGN CLASSIFICATION - EACH								SIGN POST LENGTH	
		R2-1	R7-1L	R7-1R	⓪	⓪R	⓪L&R	R7-107AR	R7-107AL	Breakaway	"U" Channel
51+32	LT.			1	1						ON LIGHT POLE
51+48	RT.	1									ON LIGHT POLE
51+88	RT.		1								9.5'
52+05	LT.	1									11'
52+44	LT.										ON LIGHT POLE
52+44	RT.						1				ON LIGHT POLE
55+18	LT.			1	1						ON LIGHT POLE
55+40	RT.			1	1						12'
56+20	RT.							1			ON LIGHT POLE
56+31	LT.	1			1						ON LIGHT POLE
59+05	LT.				1						ON LIGHT POLE
59+08	RT.			1				1			12'
59+48	RT.	1			1						ON LIGHT POLE
59+86	LT.						1				ON LIGHT POLE
60+44	RT.		1	1							11'
TOPEKA											
97+31	RT.							1			ON LIGHT POLE
97+92	RT.	1			1						11'
98+00	LT.		1	1							ON LIGHT POLE
98+30	LT.	1			1						11'
98+50	RT.		1	1							11'
98+70	LT.	1									10.5'
98+71	RT.	1					1				ON LIGHT POLE
99+21	LT.		1	1							11'

SIGN POST LENGTH SUMMARY		SIGN DESCRIPTION		PROCESS	SIZE
BREAKAWAY SIGN POST: 1 3/4" X 1 3/4" X VARIES					
LENGTH	# OF POSTS	CLASSIFICATION	TYPE		
12'	2	R2-1	SPEED LIMIT	DIRECT SCREEN	24"X30"
11'	7	R3-5L	LT. LANE MUST TURN LT.	DIRECT SCREEN	30"X36"
10'-6"	1	R3-2	NO LEFT TURN	DIRECT SCREEN	24"X24"
9'-6"	1	R6-2L	ONE-WAY W/ ARROW LT.	DIRECT SCREEN	18"X24"
8'	1	R6-2R	ONE-WAY W/ ARROW RT.	DIRECT SCREEN	18"X24"
2 1/4" X 2 1/4" X 18" SLEEVE	11	R7-1L	NO PARKING ANY TIME W/ ARROW LEFT	DIRECT SCREEN	12"X18"
2" X 2" X 36" ANCHOR	11	R7-1R	NO PARKING ANY TIME W/ ARROW RIGHT	DIRECT SCREEN	12"X18"
"U" CHANNEL					
LENGTH	# OF POSTS	R7-107AL	BUS STOP W/ ARROW LEFT	DIRECT SCREEN	12"X30"
STUBS @ 3'		R7-107AR	BUS STOP W/ ARROW RIGHT	DIRECT SCREEN	12"X30"
POSTS @ 11'		⓪L	2 HOUR PARKING W/ ARROW LEFT	DIRECT SCREEN	12"X18"
POSTS @ 10'		⓪R	2 HOUR PARKING W/ ARROW RIGHT	DIRECT SCREEN	12"X18"
POSTS @ 9'-6"		⓪L&R	2 HOUR PARKING W/ ARROW LEFT AND RIGHT	DIRECT SCREEN	12"X18"
POSTS @ 9'					
POSTS @ 8'					



RECAPITULATION OF MATERIALS		TOTAL	UNIT
SIGN FACE, HIGH INTENSITY REFLECTIVE SHEETING	72		S.F.
STEEL "U" CHANNEL SIGN POST			
BREAKAWAY SIGN POST, 1-3/4"X1-3/4"XVARIES	121		L.F.
BREAKAWAY ANCHOR SLEEVE, 2-1/4"X2-1/4"X18"	16.5		L.F.
BREAKAWAY SIGN POST ANCHOR, 2"X2"X36"	33		L.F.

SUMMARY OF QUANTITIES		TOTAL	UNIT
SIGNING	BID ITEMS	1	L.S.

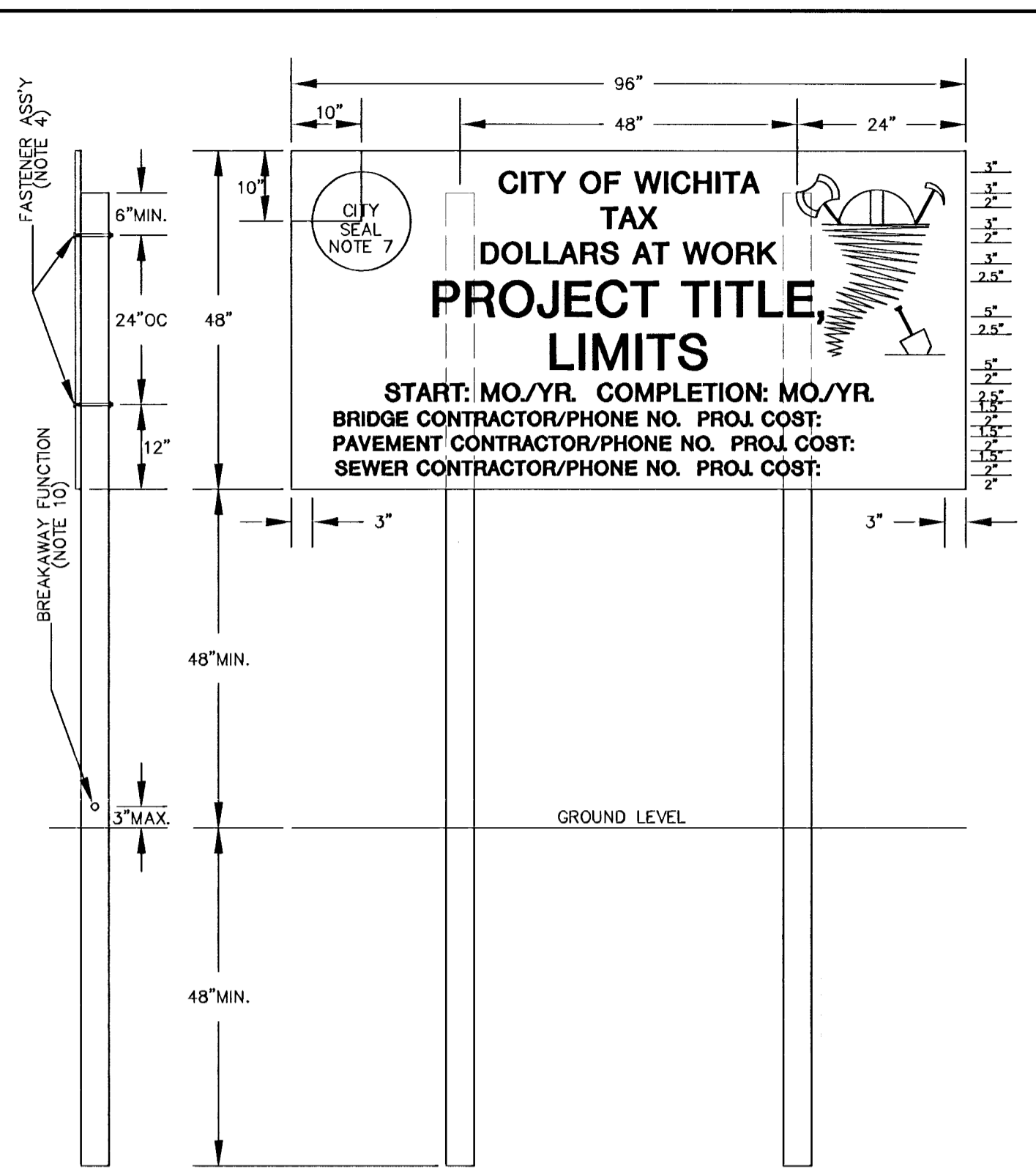
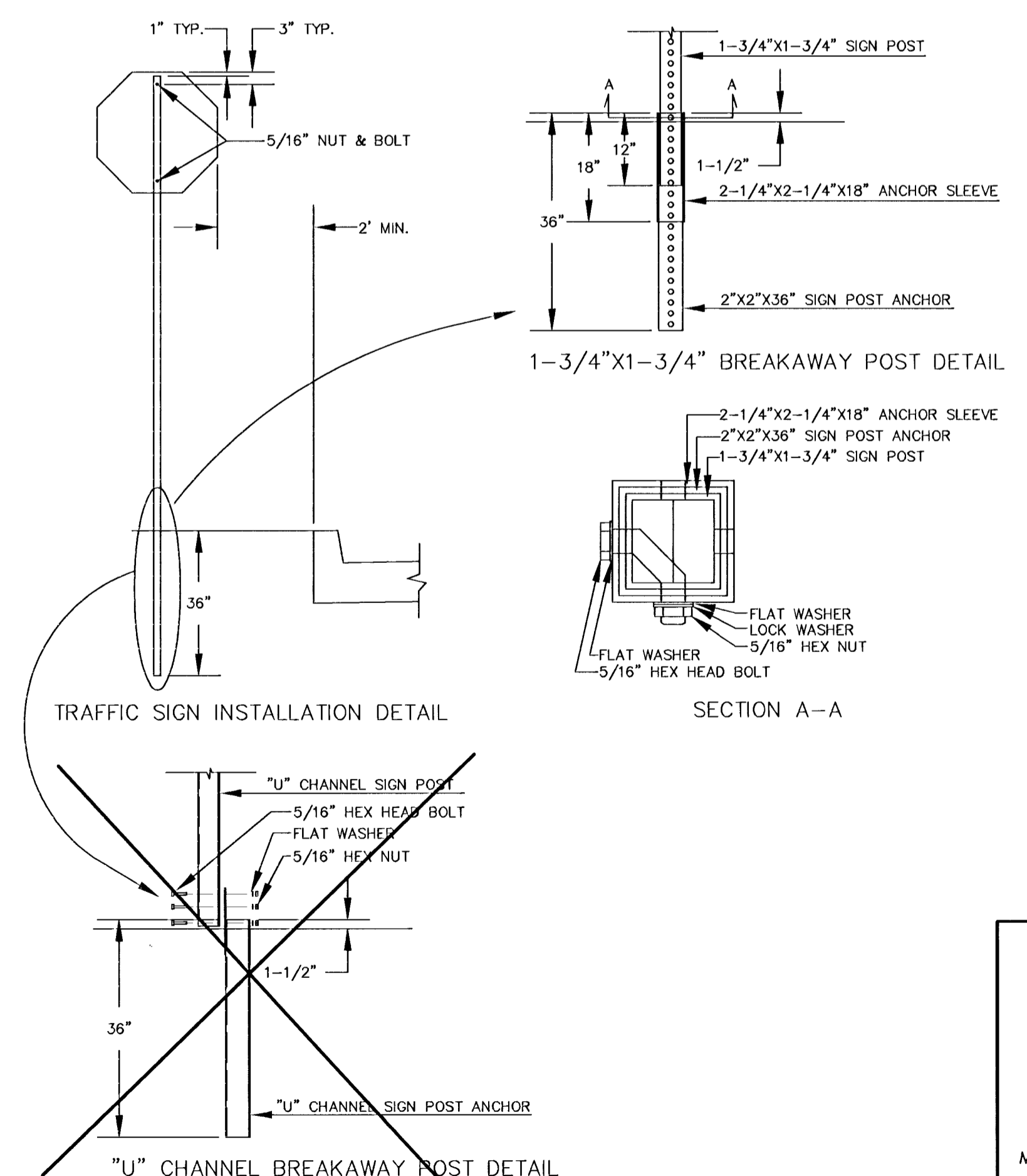
- PAVEMENT INSTALLATION SEQUENCE**
- SIGN POST ANCHOR DRIVEN INTO SUBGRADE PRIOR TO THE PLACEMENT OF THE PAVEMENT.
 - ANCHOR SLEEVE DRIVEN INTO SUBGRADE OVER THE SIGN POST ANCHOR PRIOR TO THE PLACEMENT OF THE PAVEMENT.
 - INSERT SIGN POST INTO THE SIGN POST ANCHOR AND BOLT IN PLACE.
- GROUND INSTALLATION SEQUENCE**
- SIGN POST ANCHOR DRIVEN INTO THE GROUND.
 - ANCHOR SLEEVE DRIVEN INTO GROUND OVER THE SIGN POST ANCHOR.
 - INSERT SIGN POST INTO THE SIGN POST ANCHOR AND BOLT IN PLACE.
- NOTE: IN ALL INSTALLATIONS THE FIRST HOLE ABOVE THE FINISHED GRADE LEVEL IN ALL THREE UNITS MUST BE IN LINE FOR INSERTION OF THE BOLT.
- ALL BOLTS AND NUTS FOR FASTENING THE SIGNS AND SIGN POST ASSEMBLY SHALL COMPLY WITH SECTION 1614 AND ALL WASHERS SHALL COMPLY WITH SECTION 1614 OF THE STANDARD SPECIFICATION FOR STATE ROAD AND BRIDGE CONSTRUCTION (1980 EDITION) AND SHALL BE A SUBSIDIARY BID ITEM.

SIGN POST LENGTH SUMMARY		SIGN DESCRIPTION		PROCESS	SIZE
BREAKAWAY SIGN POST: 1 3/4" X 1 3/4" X VARIES					
LENGTH	# OF POSTS	CLASSIFICATION	TYPE		
12'	2	R2-1	SPEED LIMIT	DIRECT SCREEN	24"X30"
11'	7	R3-5L	LT. LANE MUST TURN LT.	DIRECT SCREEN	30"X36"
10'-6"	1	R3-2	NO LEFT TURN	DIRECT SCREEN	24"X24"
9'-6"	1	R6-2L	ONE-WAY W/ ARROW LT.	DIRECT SCREEN	18"X24"
8'	1	R6-2R	ONE-WAY W/ ARROW RT.	DIRECT SCREEN	18"X24"
2 1/4" X 2 1/4" X 18" SLEEVE	11	R7-1L	NO PARKING ANY TIME W/ ARROW LEFT	DIRECT SCREEN	12"X18"
2" X 2" X 36" ANCHOR	11	R7-1R	NO PARKING ANY TIME W/ ARROW RIGHT	DIRECT SCREEN	12"X18"
"U" CHANNEL					
LENGTH	# OF POSTS	R7-107AL	BUS STOP W/ ARROW LEFT	DIRECT SCREEN	12"X30"
STUBS @ 3'		R7-107AR	BUS STOP W/ ARROW RIGHT	DIRECT SCREEN	12"X30"
POSTS @ 11'		⓪L	2 HOUR PARKING W/ ARROW LEFT	DIRECT SCREEN	12"X18"
POSTS @ 10'		⓪R	2 HOUR PARKING W/ ARROW RIGHT	DIRECT SCREEN	12"X18"
POSTS @ 9'-6"		⓪L&R	2 HOUR PARKING W/ ARROW LEFT AND RIGHT	DIRECT SCREEN	12"X18"
POSTS @ 9'					
POSTS @ 8'					

NOTE: ALL LETTER, NUMBER & SYMBOL SIZES, SPACING & COLORS SHALL CONFORM TO THE CURRENT "MANUAL ON UNIFORM TRAFFIC CONTROL DEVICES".

ALL SIGN MATERIAL TO BE 0.080" ALUMINUM.

SEE TRAFFIC SIGNAL POLE DETAILS FOR ADDITIONAL TRAFFIC SIGN REQUIREMENTS. THE COLOR OF SIGN BACKS, POSTS & ADJOINING HARDWARE SHALL BE BLACK TO MATCH THE TRAFFIC SIGNAL POLES.



- PROJECT CONSTRUCTION SIGN NOTES**
- MATERIALS:** THE SIGN SHALL BE MANUFACTURED FROM BACKING MATERIALS COMPOSED OF (1) METAL: 10GA. STEEL OR 0.156" THICK FLAT SHEET ALUMINUM; (2) 3/4" EXTERIOR TYPE FIR PLYWOOD. THE SIGN POSTS SHALL BE (1) 4"X4" COMMERCIAL GRADE, TREATED WOOD SIGN POSTS; (2) FLANGED CHANNEL POSTS, 3 LBS. PER FOOT.
 - COLOR:** THE FRONT, BACK AND ALL EDGES OF THE SIGN SHALL BE PAINTED ONE COAT OF WHITE PRIMER TO BE FOLLOWED BY TWO COATS OF SEMIGLOSS WHITE ENAMEL. ALL ENAMEL PAINTS SHALL BE OPAQUE AND OF EXTERIOR QUALITY. WHITE: SIGN BLANK, BLACK: LEGEND
 - LEGEND AND INTERLINE SPACING:** ALL LEGEND SHALL BE SERIES 'C' ALPHABET AS IS SPECIFIED IN THE STANDARD ALPHABETS FOR HIGHWAY SIGNS PUBLICATION. INTERLINE SPACING SHALL BE AS SPECIFIED ON THE LAYOUT WITH EXCEPTION OF LINES 4 & 5. USE APPROPRIATE LETTER SERIES TO CENTER VARIABLE LENGTH PROJECT TITLE AND PROJECT LIMITS DISCRPTION ON LINES 4 & 5 RESPECTIVELY. LEGEND SHALL BE BLACK ENAMEL.
 - HARDWARE:** ALL BOLTS, NUTS AND WASHERS SHALL BE ELECTROPLATED WITH ZINC OR CADMIUM. THE FASTENER ASS'Y. FOR THE 4"X4" WOOD POSTS SHALL INCLUDE: 1 3/8"X5-1/4" HEX HEAD BOLT; 2 FLAT WASHERS; 1 3/8"X16NC HEX NUT. THE FASTENER ASS'Y. FOR THE FLANGED CHANNEL POSTS SHALL INCLUDE: 1 3/8"X3-1/2" HEX HEAD BOLT; 1 FLAT WASHER; 1 LOCK WASHER; 1 3/8"X16NC HEX NUT.
 - LOCATION OF SIGNS:** SIGNS SHALL BE ERECTED WITHIN THE STREET RIGHT-OF-WAY AT LOCATIONS AS DESIGNATED ON THIS SHEET OR AS DIRECTED BY THE FIELD ENGINEER. THE SIGN SHALL FACE APPROACHING TRAFFIC AND BE LOCATED SO AS NOT TO OBSCURE OR DETRACT FROM THE EFFECTIVENESS OF OTHER OFFICIAL STREET SIGNING AND MARKERS OR OBSTRUCT THE VISION OF MOTORISTS. SIGNS SHALL BE ERECTED IN ADVANCE OF ISSUING WORK ORDER.
 - THE CONTRACTOR SHALL SUPPLY ALL SIGN CONSTRUCTION MATERIALS AND SHALL BE RESPONSIBLE FOR ITS FABRICATION, INSTALLATION, MAINTENANCE, AND REMOVAL.
 - THE 14" DIA. CITY SEAL DECAL MAY BE PURCHASED FROM THE CITY OF WICHITA DEPARTMENT OF ENGINEERING FOR \$10.00 A SET.
 - PRIOR TO SIGN FABRICATION THE CONTRACTOR SHALL CONTACT THE CONSTRUCTION ENGINEER, DEPT. OF PUBLIC WORKS, TO OBTAIN THE REQUIRED INFORMATION FOR THE SIGN LEGEND.

REVISED 4/99

STREETSCAPES
PROJECT NAME

SIGNING DETAILS
SHEET TITLE

MO-KANSAS ENGINEERING CONSULTANTS, INC.
411 N. WEBB ROAD
WICHITA, KS. 67206
316-684-9600

DCH DESIGN BY: JTC DRAWN BY: DCH CHECKED BY:

Oct. 1995 DATE: 92010 JOB NO.: 19 / 61 SHEET/OF