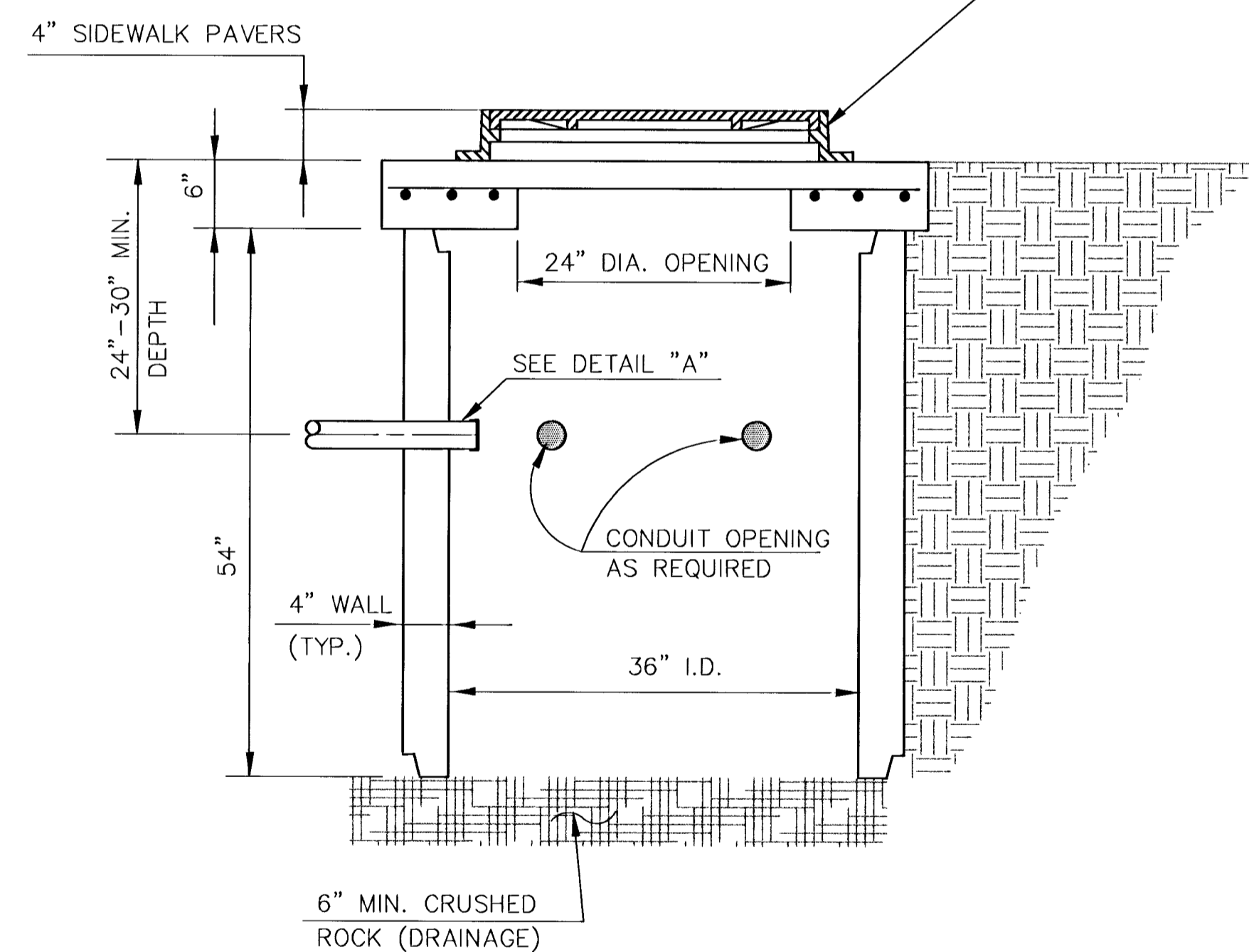
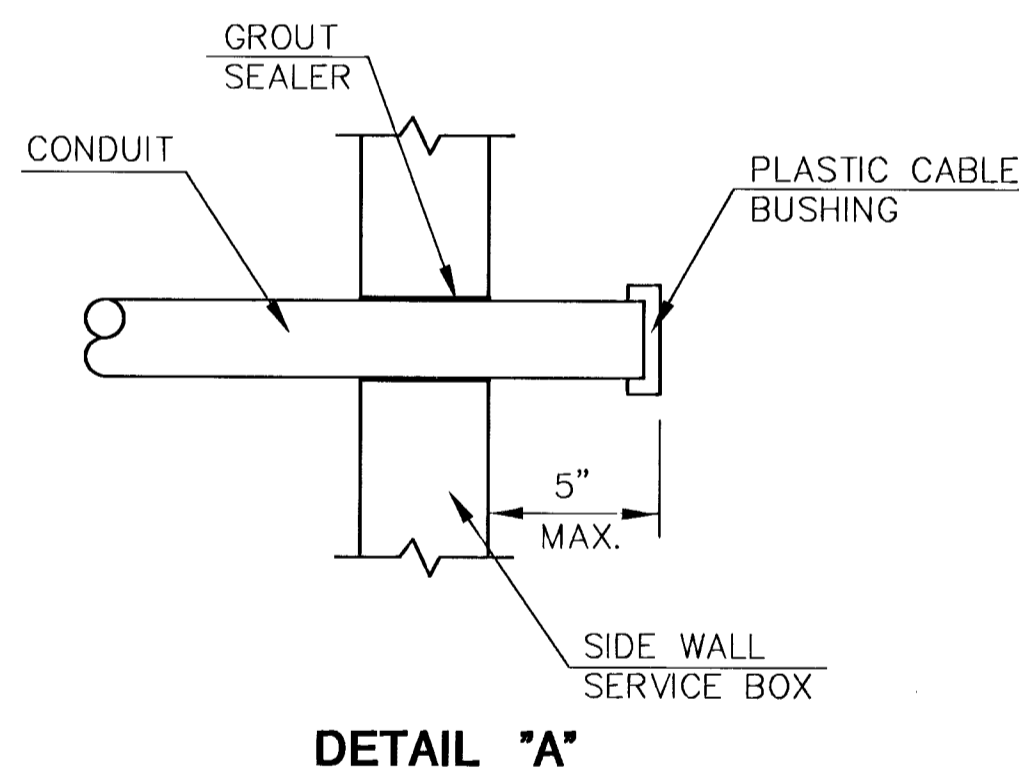


ELEVATION
PRE FABRICATED JUNCTION BOX
(24" I.D. X 36" RCP)



ELEVATION
PRE FABRICATED SERVICE BOX
(36" I.D. X 54" RCP & 6" CAP)



NOTES

SERVICE BOX:

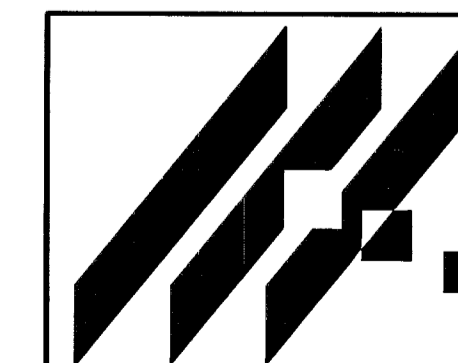
1. CONDUIT CONNECTION TO BE FLUSH TO WITHIN 5" OF INSIDE FACE OF SIDE WALL WITH ABILITY TO DRAIN CONDUIT INTO SERVICE BOX.
2. CONDUIT CONNECTIONS TO SERVICE BOX SHALL BE TERMINATED WITH PLASTIC CABLE BUSHING.
3. CONDUIT SHALL BE SEALED WITH APPROVED SEALER AT INSIDE WALL FACE.

TRENCHING:

1. CONDUIT DEPTH TO BE 30" MINIMUM AS SHOWN WITH ROCK AND RUBBLE FREE BACKFILL TO SERVE AS BEDDING MATERIAL. MAINTAIN MINIMUM CONDUIT DEPTH IN TRENCH.
2. BACKFILL TO BE COMPACTED IN 6" LOOSE LIFTS BY HAND OR MECHANICAL TAMPING TO A 95% STANDARD DENSITY.
3. SLOPE CONDUIT TO DRAIN AS DIRECTED BY THE ENGINEER.
4. INSTALL 3" RIGID GALVANIZED STEEL CONDUIT BETWEEN SERVICE BOXES.
5. 2" RIGID GALV. STL. CONDUIT BETWEEN JUNCTION BOXES.

JUNCTION BOX

1. BOX FRAME & COVER TO BE INSTALLED FLUSH WITH SIDEWALK PAVERS.



MID-KANSAS ENGINEERING
CONSULTANTS, INC.
411 N. WEBB ROAD
WICHITA, KS. 67206
316-684-9600

CITY OF WICHITA
PROJECT NAME
**TRAFFIC SIGNAL SERVICE BOX
AND JUNCTION BOX DETAILS**
SHEET TITLE

DCH DESIGN BY. SWM DRAWN BY. DCH CHECKED BY.
DATE JOB NO. 29 61 SHEET/OF

REVISION DATE	COMMENTS	INITIALS