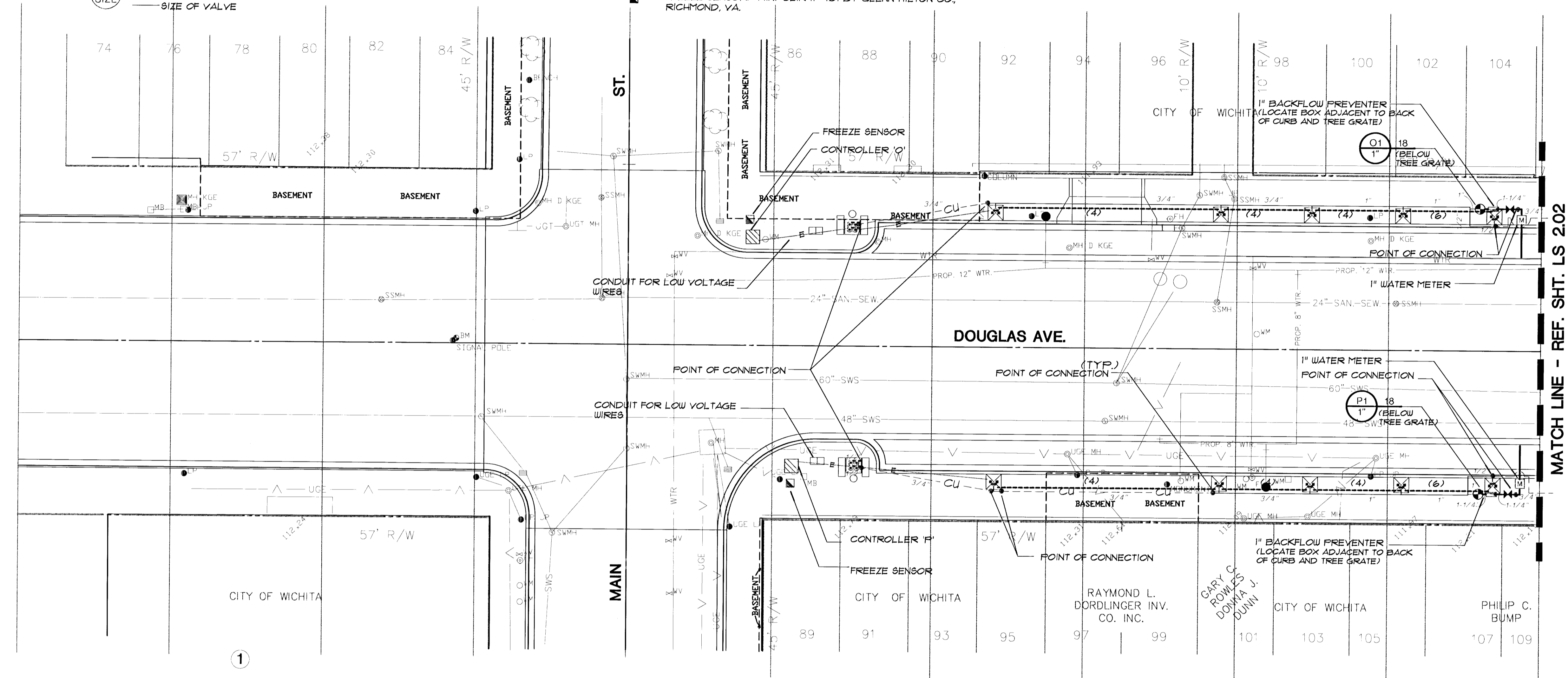


IRRIGATION LEGEND:

- BUBBLER HEAD: RAINBIRD #1404 ON 1/2" COPPER MALE ADAPTER AND COPPER RISER BELOW THE TREE GRATE (LOCATE AT OPPOSITE SIDES OF THE TREE TRUNK--TWO PER TREE)
- BUBBLER HEAD AT TOWER PLANTER: RAINBIRD #1404 BUBBLER HEAD ON 1/2" COP-UP ASSEMBLY. (INSTALL 4 UNITS PER PLANTER)
- ELECTRIC REMOTE CONTROL VALVE: RAINBIRD #FE-3 SERIES, OR EQUAL, WEATHERMATIC #11024 CR, EITHER WITH FLOW CONTROL
- MAIN LINES-SCHEDULE 40 PVC
- LATERAL LINE-CLASS 200 PVC, EXCEPT 1/2" PIPE-CLASS 315 PVC
- VALVE SEQUENCE NUMBER
- GPM THROUGH VALVE
- SIZE OF VALVE
- TYPE 'K' COPPER LINE UNDERNEATH PAVING AT BASEMENTS
- MANUAL GATE VALVE-LINE SIZE
- BACKFLOW PREVENTER: FEBCO #165-1", INSTALL IN ACCORDANCE TO CITY CODE
- POINT OF CONNECTION
- 1" WATER METER
- 4" DIA. SCH. 40 PVC SLEEVE
- 6" DIA. SCH. 40 PVC SLEEVE
- 2" DIA. CONDUIT FROM CONTROLLER LOCATION TO EXTERIOR PLANT BED
- FREEZE SENSOR: MINI-CLIK II #401 BY GLENN HILTON CO., RICHMOND, VA.



SCALE: 1"=20'

CONTROLLER INDEX:

- CONTROLLER 'O': RAINBIRD MODEL RC-4C, 4 STATION-MOUNTED IN TRAFFIC STANDARD BOX. COORDINATE WITH THE LOCAL UTILITY COMPANY. INSTALL WITH ALL SURGE PROTECTION ON BOTH INCOMING POWER SUPPLY ON ALL OF THE FIELD WIRES. CONTRACTOR SHALL VERIFY LOCATION ON-SITE WITH CITY OF WICHITA, BEFORE BEGINNING ANY WORK ON THIS PROJECT. 117 VOLT A.C. FROM A 15 AMP CIRCUIT EXISTING AT THIS LOCATION. CONTRACTOR SHALL MAKE ALL ELECTRICAL CONNECTIONS TO RENDER THE SYSTEM 100% OPERABLE. OBTAIN APPLICABLE PERMITS IMMEDIATELY AFTER THE CONTRACT IS LET. INSTALL TO MEET ALL LOCAL AND STATE CODES.
- CONTROLLER 'F': RAINBIRD MODEL RC-4C, 4 STATION-MOUNTED IN TRAFFIC STANDARD BOX. SAME NOTES AS CONTROLLER 'O' ABOVE.
- CONTROLLER 'R': RAINBIRD MODEL RC-4C, 4 STATION-MOUNTED IN TRAFFIC STANDARD BOX. SAME NOTES AS CONTROLLER 'O' ABOVE.
- CONTROLLER 'S': RAINBIRD MODEL RC-4C, 4 STATION-MOUNTED IN TRAFFIC STANDARD BOX. SAME NOTES AS CONTROLLER 'O' ABOVE.
- CONTROLLER 'T': RAINBIRD MODEL RC-4C, 4 STATION-MOUNTED IN TRAFFIC STANDARD BOX. SAME NOTES AS CONTROLLER 'O' ABOVE.

IRRIGATION NOTES:

1. LINE LAYOUT IS DIAGRAMMATIC. ADJUST HEAD AND LINE LOCATIONS ON-SITE TO ACCOMMODATE EXISTING JOB CONDITIONS AND TO ACHIEVE COMPLETE COVERAGE.
2. GROUP VALVE BOXES (AS MUCH AS POSSIBLE) AND ALIGN ENDS-INSTALL WITH SIDES PARALLEL.
3. ALL SPRINKLER HEADS SHALL BE SET PLUMB TO FINISHED GRADE UNLESS OTHERWISE SPECIFIED.
4. THE IRRIGATION CONTRACTOR SHALL FLUSH AND ADJUST ALL SPRINKLER HEADS AND VALVES TO INSURE FOR OPTIMUM COVERAGE WITH MINIMAL OVERSPRAY ONTO WALKS, STREETS, ETC.
5. THE IRRIGATION CONTRACTOR SHALL HAND TRENCH WITHIN THE DRIP LINES OF ANY EXISTING TREES. PAINT WITH SEALANT ANY ROOTS CUT OVER 1" IN DIA. --TRENCH RADIALLY TOWARD TREE TRUNK WITHIN DRIP LINE.
6. LOCATE BUBBLER HEADS AT 2" BELOW THE TREE GRATE AND AT UNIFORM HEIGHT. ALL CONTROLLERS ARE TO BE LOCATED INSIDE BOXES AFFIXED TO TRAFFIC SIGNAL STANDARDS, PER EXISTING CITY OF WICHITA DETAIL ON MAIN STREET.

GENERAL LEGEND

- PROPERTY LINE
- - - CONTRACT LIMIT LINE
- CENTER LINE
- WTR
- UG+ GAS
- SWS
- UGE
- EXISTING UTILITY LINES
- EDGE OF BASEMENT
- DETAIL REFERENCE
- DETAIL NO.
- SHEET NO.
- EXISTING VAULTS

Revised 4/99

the swa group

Landscape Architecture 2211 N. Lamar, Suite 400
 Site Planning Dallas, TX 75202
 Urban Design 214-954-0018

STREETSCAPES
 PROJECT NAME
IRRIGATION PLAN
DOUGLAS AVE. @ 45+00 TO 53+00
 SHEET TITLE

MID-KANSAS ENGINEERING CONSULTANTS, INC.
 411 N. WEBB ROAD
 WICHITA, KS. 67206
 316-684-9600

DT DESIGN BY: EG
 J.M. CHECKED BY:
 OCT '95 DATE: SWA MKC-251 LS 201
 JOB NO. SHEET/OF

G:\CIVIL\9210\SMAL\9210-14.DWG Tue May 11 15:52:09 1999