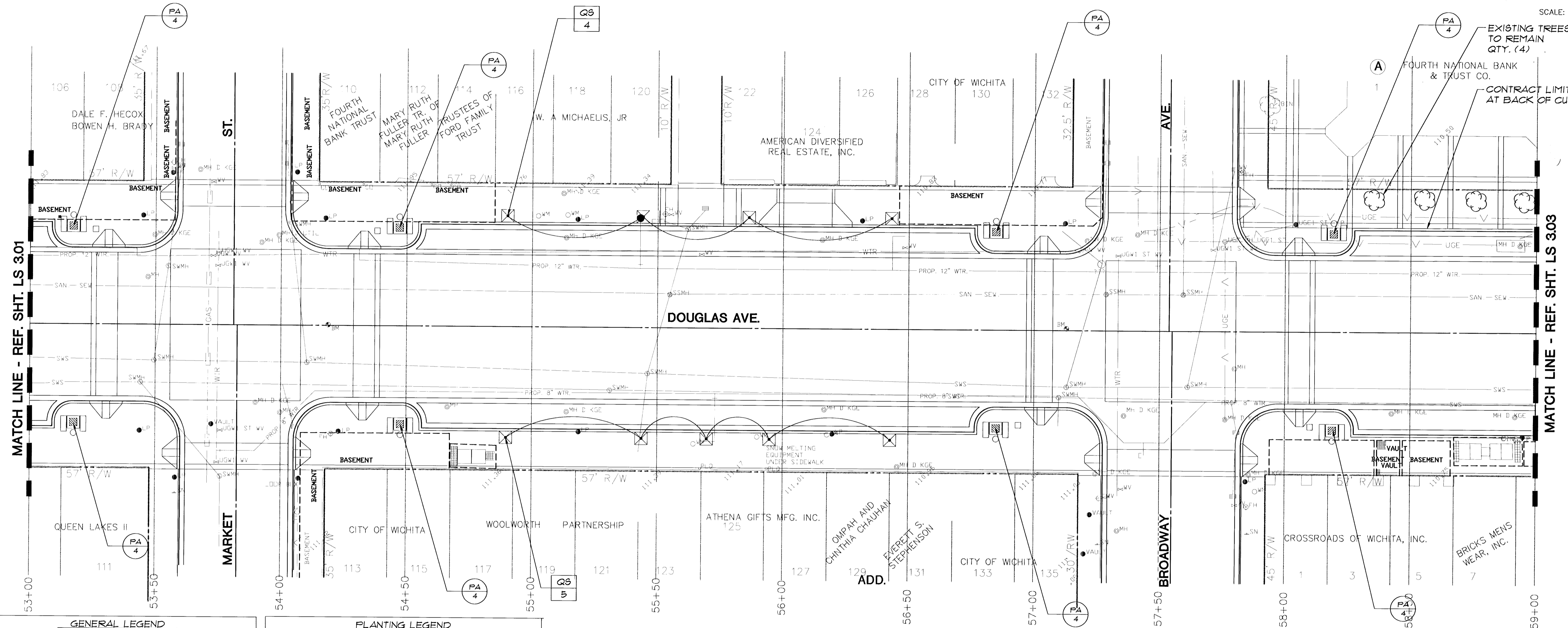


PLANT MATERIAL SCHEDULE

| SYMBOL | QTY. | BOTANICAL NAME/ COMMON NAME | SIZE/CAL. | HEIGHT | SPREAD | ROOT | REMARKS |
|--------|------|---|-------------------------|----------|---------|----------|---|
| GB | 13 | Ginkgo Biloba 'Autumn Gold' / 'Autumn Gold' Ginkgo | 4 1/4" - 4 1/2" 16'-18' | 8 - 10' | 8 - 10' | B & B | Full, Matched, Upright, 'or equal' male cultivar |
| GS | 24 | Quercus shumardii / Shumard Red Oak | 3 1/2 - 4" | 14 - 16' | 8 - 10' | 100 Gal. | Full, Matched, Upright |
| PA | 48 | Polygonum Aubertii / Chinese Fleeca Vine | 24" | - | - | 1 Gal. | Full |

SCALE: 1"=20'



GENERAL LEGEND

- PROPERTY LINE
- CONTRACT LIMIT LINE
- CENTER LINE
- EXISTING UTILITY LINES
- EDGE OF BASEMENT
- EXISTING VAULTS

DETAIL REFERENCE

1 - DETAIL NO.
L 100 - SHEET NO.

PLANTING LEGEND

- GROUND COVER
- PROPOSED TREES
- EXISTING TREES
- G.C. REFERENCE
- GROUND COVER SYM.
- TREE REFERENCE
- TREE SYMBOL
- QUANTITY
- STEEL EDGE

NOTE:
REF. SHEET LS 301 FOR PLANTING NOTES.

the swa group

Landscape Architecture 2211 N. Lamar, Suite 400
Site Planning Dallas, TX 75202
Urban Design 214-954-0018

STREETSCAPES
PROJECT NAME

PLANTING PLAN
DOUGLAS AVE. @ 53+00 TO 59+00
SHEET TITLE

MID-KANSAS ENGINEERING CONSULTANTS, INC.
411 N. WEBB ROAD
WICHITA, KS. 67206
316-684-9600

DESIGN BY: PM, EM, LJ
DRAWN BY: JM
CHECKED BY:

DATE: OCT '95
JOB NO.: SWA MKC-251
SHEET OF: LS 302

Revised 4/93

6:\CIVIL\9210\SMAL9210-2A.DWG Tue May 11 15:54:23 1993