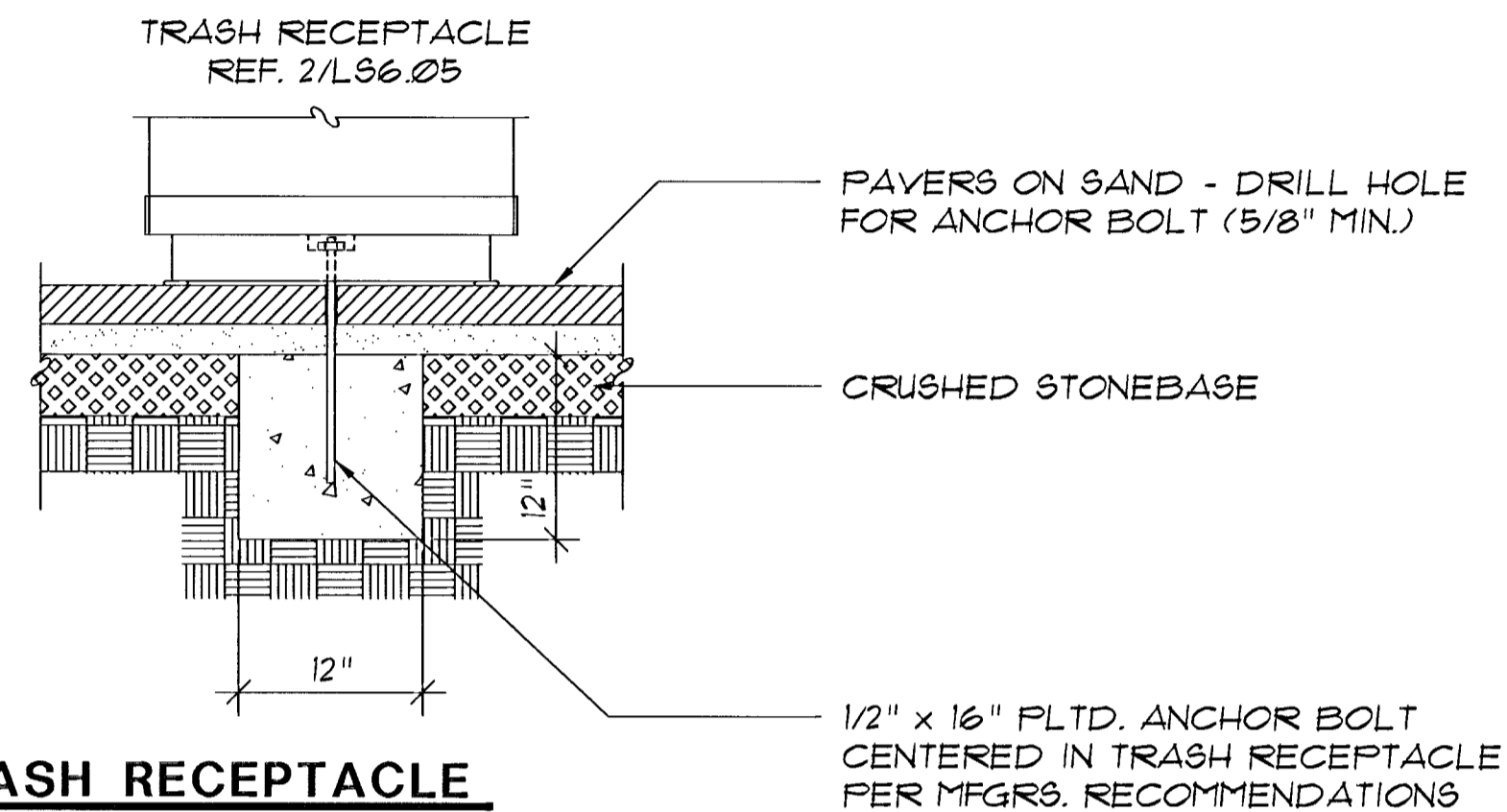


**BENCH**



**TRASH RECEPTACLE**

**4 MOUNTING DETAILS**  
1" = 1'-0"

**CHANGES TO STREET FURNISHINGS LAYOUT**

In lieu of Newspaper Stand Enclosure and Trash Receptacle locations and quantities shown on Sheets LS 101, 102, & 103, provide as follows:

**Newspaper Stand Enclosures**

Furnish and install 12 each double unit enclosures and 2 each single unit enclosures at project area locations as directed by the Engineer.

\* Furnish and deliver to the City, 2 each double unit enclosures and 2 each single unit enclosures.

**Trash Receptacle**

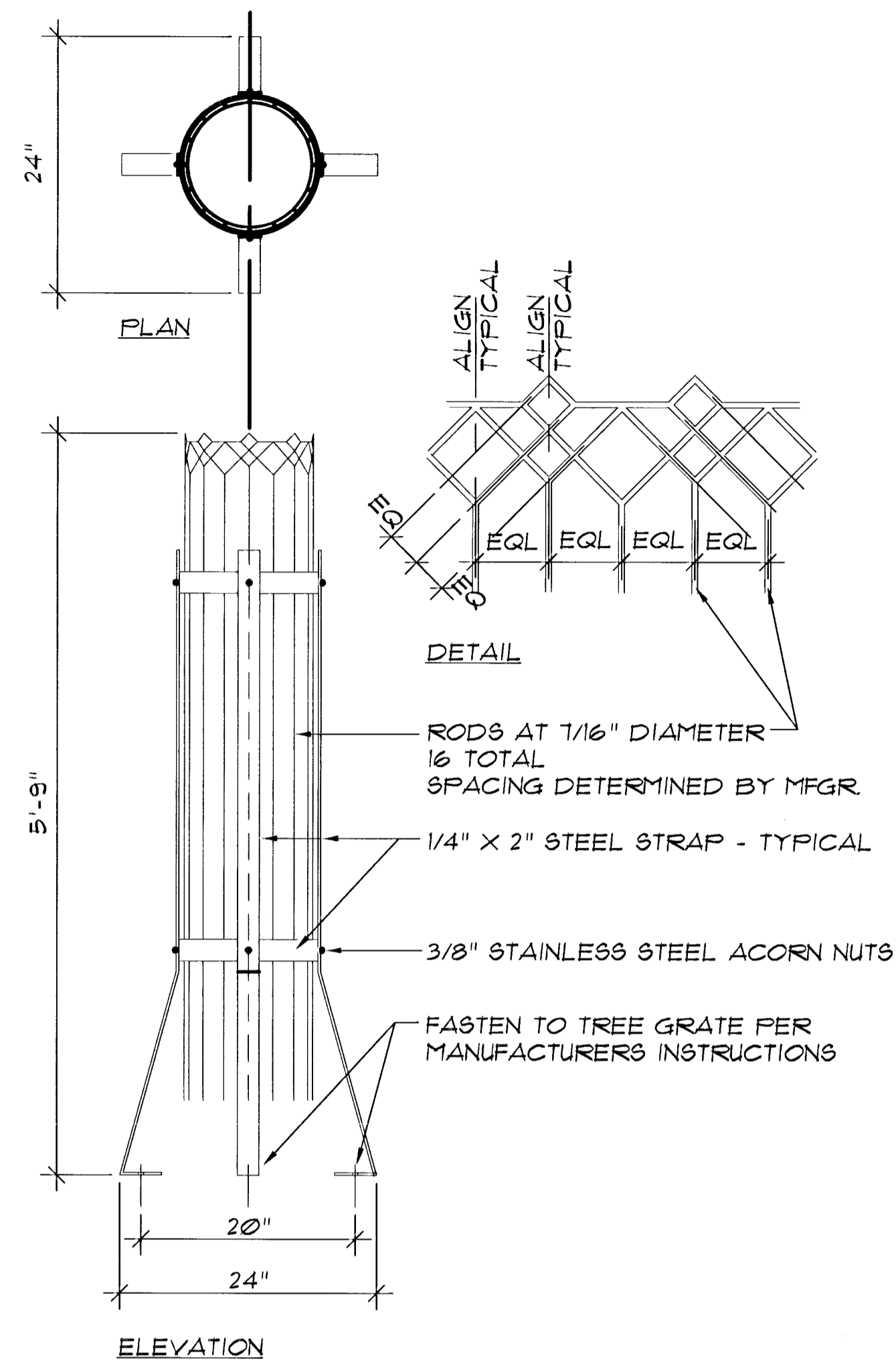
\* Furnish and deliver to the City, 2 each new trash enclosures.

Furnish and install 4 each new trash enclosures at project location shown below.

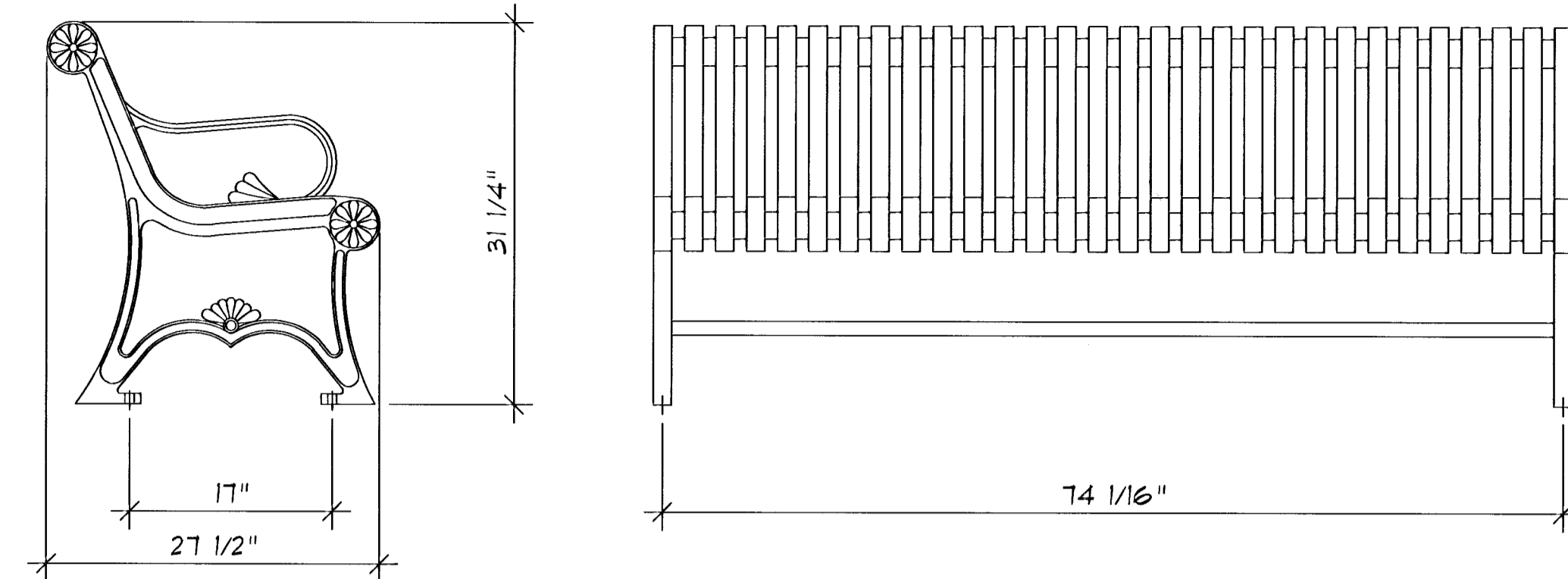
Remove and install 12 each existing trash enclosures at project location shown below.

LOCATION	INSTALL NEW	REINSTALL EXISTING
DOUGLAS # MAIN NE		
DOUGLAS # MAIN SE		
MAIN TO MARKET MIDPOINT, LEFT		
MAIN TO MARKET MIDPOINT, RIGHT		
DOUGLAS # MARKET NW		
DOUGLAS # MARKET NE		
DOUGLAS # MARKET SE		
DOUGLAS # MARKET SW		
DOUGLAS # BROADWAY NW		
DOUGLAS # BROADWAY NE		
DOUGLAS # BROADWAY SE		
DOUGLAS # BROADWAY SW		
DOUGLAS # TOFEKA NW		
DOUGLAS # TOFEKA NE		
DOUGLAS # TOFEKA SE		
DOUGLAS # TOFEKA SW		

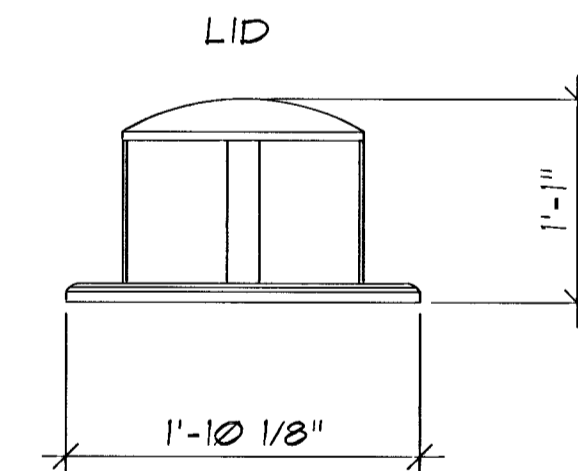
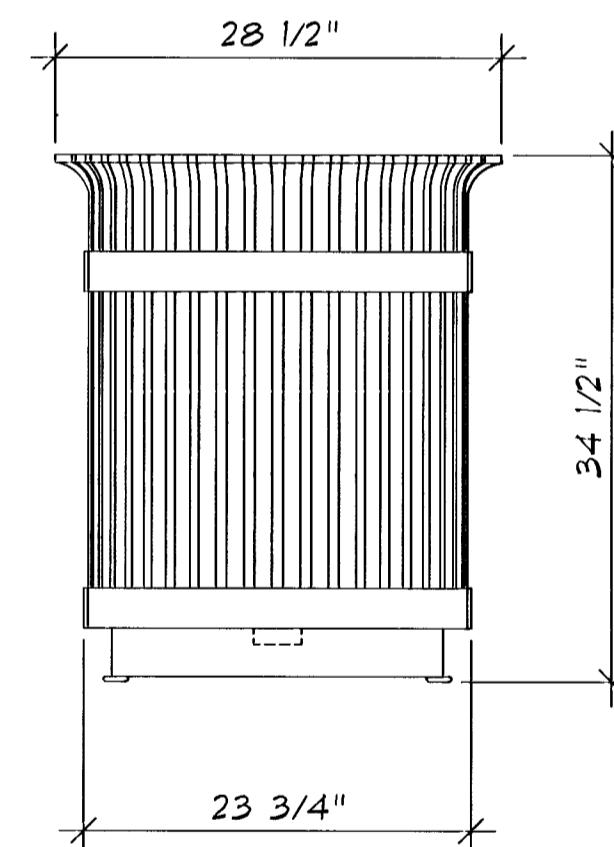
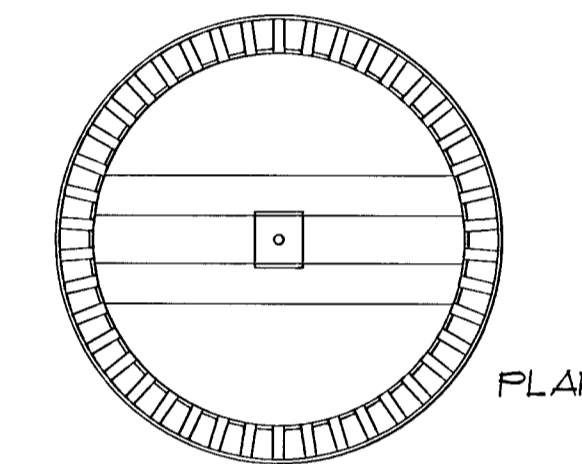
\* These are to be delivered assembled to the City's Central Maintenance Facility (CMF) at 1001 S. McLean. Contact Mike Hampel at 268-4079 to coordinate delivery of the items.



**3 TREE GUARD**  
1" = 1'-0"



**1 BENCH SECTION/ELEVATION**  
1" = 1'-0"

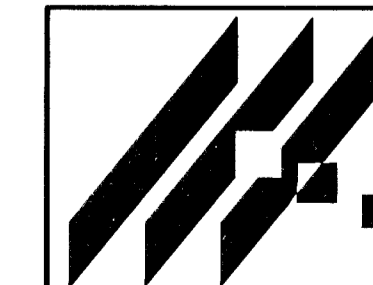


**2 TRASH RECEPTACLE**  
1" = 1'-0"

Revised 4/99

**the swa group**

Landscape Architecture 2211 N. Lamar, Suite 400  
Site Planning Dallas, TX 75202  
Urban Design 214-954-0016



**DOUGLAS STREETSCAPES**

PROJECT NAME

**STREET FURNISHINGS DETAILS**

SHEET TITLE

MID-KANSAS ENGINEERING CONSULTANTS, INC.  
411 N. WEBB ROAD  
WICHITA, KS. 67206  
316-684-9600

DESIGN BY: DT

DRAWN BY: PM, EM, LJ

CHECKED BY: JM

DATE: OCT '95

SWA MKC-251

LS 6.05

JOB NO.

SHEET/OF