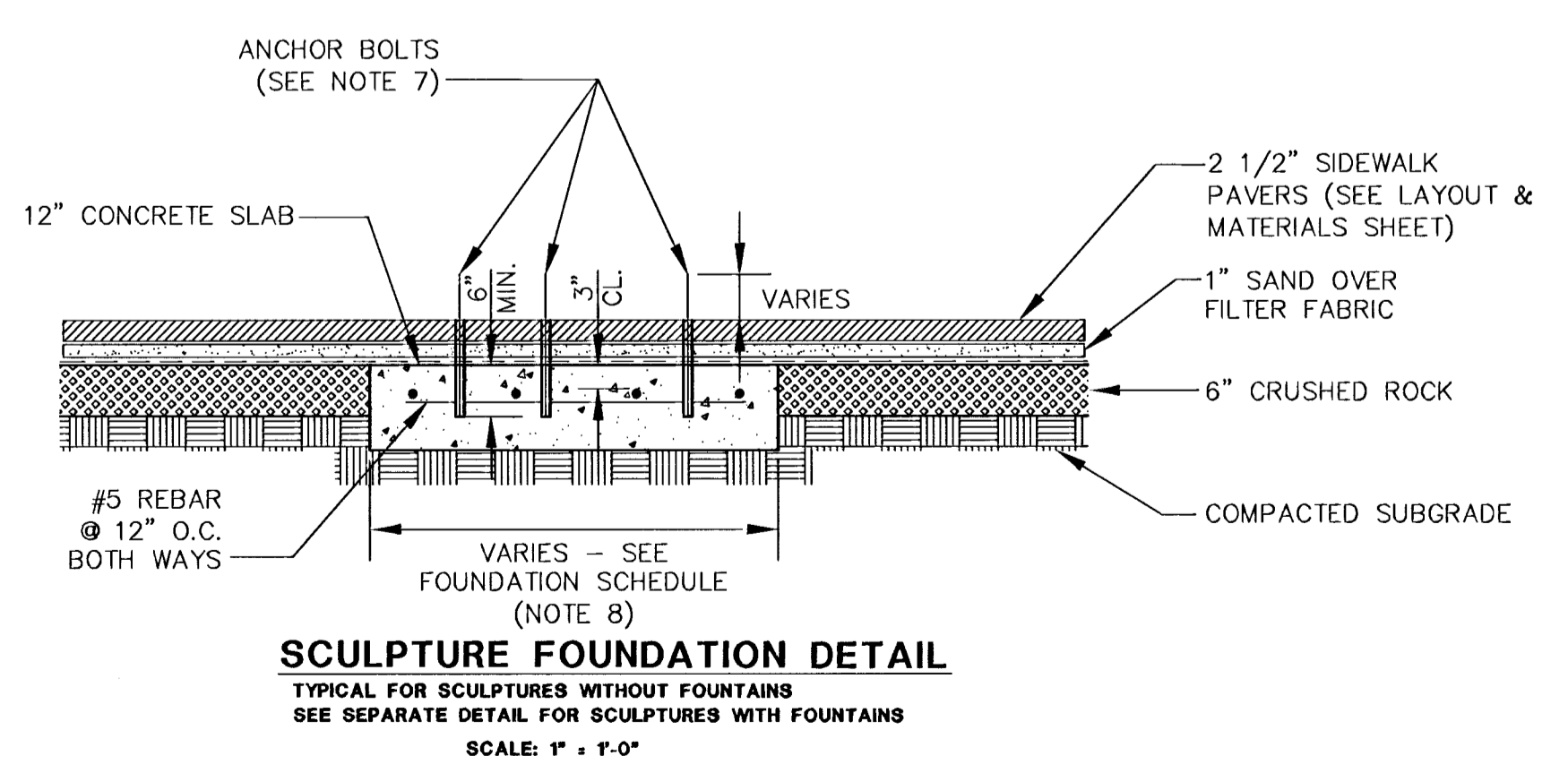
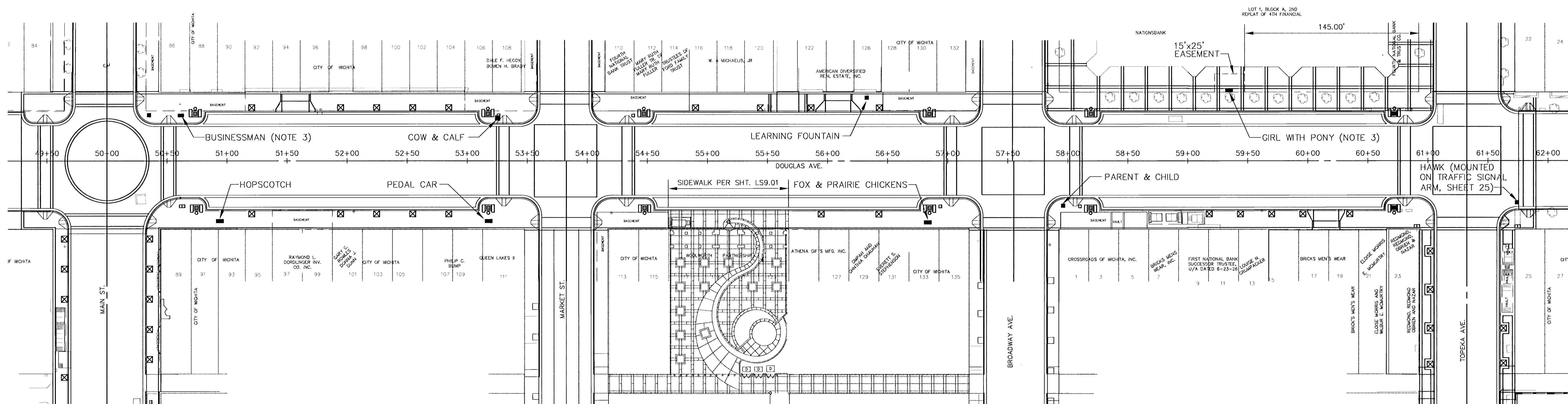
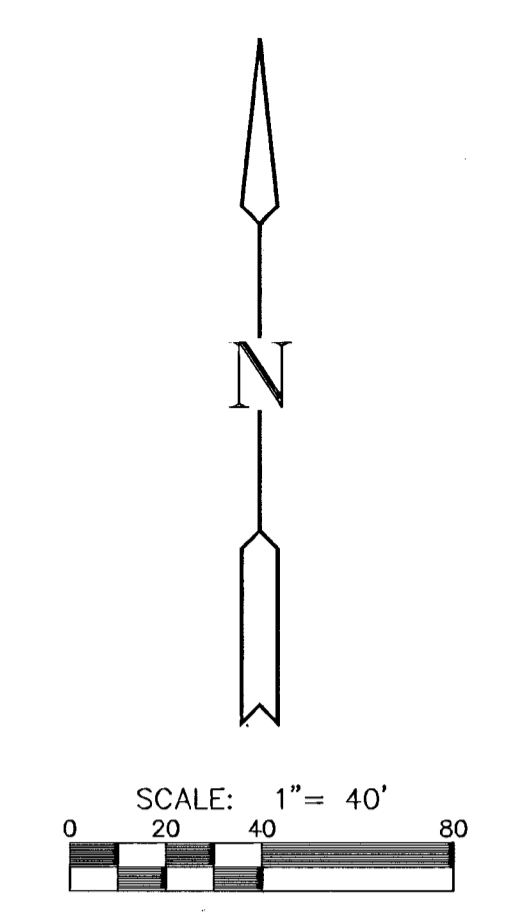


NOTES:

- ALL WORK PERTAINING TO SCULPTURES/FOUNTAINS SHALL BE COORDINATED WITH THE WORK OF OTHER CONSTRUCTION TRADES ON THE PROJECT.
- UTILITIES SHALL BE MARKED AND LOCATED AT EACH AREA PRIOR TO ANY EXCAVATION.
- EXISTING SIDEWALK PAVEMENT SHALL REMAIN IN PLACE AS MUCH AS POSSIBLE. PAVEMENT REMOVAL REQUIRED BY CONSTRUCTION SHALL BE REPLACED IN LIKE KIND.
- WATER SUPPLY FOR THE FOUNTAINS SHALL BE OBTAINED FROM THE SERVICE SIDE OF THE NEAREST IRRIGATION SYSTEM BACK FLOW PREVENTER, UNLESS OTHERWISE APPROVED BY THE ENGINEER. COORDINATE WITH INSTALLATION OF THE IRRIGATION SYSTEM.
- FOUNTAIN DRAINS SHALL BE CONNECTED TO THE NEAREST CONVENIENT SANITARY OR STORM WATER SEWER (SEE PAVING PLANS), AND AS APPROVED BY THE ENGINEER.
- EXACT ORIENTATION OF SCULPTURES AT DESIGNATED LOCATION SHALL BE AS DETERMINED BY THE CITY OF WICHITA PARK AND RECREATION DEPARTMENT (JOHN D'ANGELO, 337-9040 OR DESIGNATED REPRESENTATIVE).
- ANCHOR BOLTS SHALL BE STAINLESS STEEL THREADED ROD. SIZES & QUANTITIES WILL VARY WITH SCULPTURE. EXPECTED SIZES ARE 3/4" - 1" DIA. AND QUANTITIES ARE 4-8 BOLTS PER SCULPTURE. CITY WILL PROVIDE TEMPLATE FROM ARTIST FOR BOLT PLACEMENT. DRILL HOLES THROUGH PAVERS AND INTO CONCRETE SLAB. EPOXY BOLTS INTO CONCRETE SLAB ONLY. COORDINATE SPECIFIC REQUIREMENTS, SIZES AND PROTRUDED HEIGHTS WITH CITY OF WICHITA PARK AND RECREATION DEPARTMENT.
- VERIFY FOUNDATION DIMENSION REQUIREMENTS WITH CITY FURNISHED SCULPTURE AND ANCHOR BOLT TEMPLATE BEFORE CONSTRUCTING FOUNDATION. CONFIRM PRECISE LOCATION WITH CITY PARK AND RECREATION DEPARTMENT. LOCATION MAY BE ADJUSTED SLIGHTLY TO AVOID CONFLICT WITH UTILITIES, BUILDING ENTRANCES, OR OTHER IMPROVEMENTS, AND AS APPROVED BY BOTH THE ENGINEER AND REPRESENTATIVE OF THE CITY PARK AND RECREATION DEPARTMENT.
- COORDINATE LOCATION OF FOUNTAIN PUMP AND EQUIPMENT VAULTS WITH CITY PARK AND RECREATION DEPARTMENT.
- SEE OTHER PROJECT DRAWINGS FOR KNOWN UTILITY LOCATIONS AND PROPOSED STREETSCAPE IMPROVEMENTS.



SCULPTURE FOUNDATION SCHEDULE		
NAME	DIMENSION	ESTIMATED WEIGHT (LBS.)
BUSINESSMAN (W/ FOUNTAIN)	SEE FOUNTAIN DETAILS SHEET	800
HOPSCOTCH	36"x36"	300
PEDAL CAR (W/ FOUNTAIN)	SEE FOUNTAIN DETAILS SHEET	500
COW & CALF	48"x96"	900
FOX & PRAIRIE CHICKEN	18"x36"	200
PARENT & CHILD	48"x48"	1000
LEARNING FOUNTAIN	SEE FOUNTAIN DETAILS SHEET	600
GIRL WITH PONY	48"x96"	700
HAWK	N/A	100

STREETSCAPES
PROJECT NAME

SCULPTURE LOCATIONS
SHEET TITLE

MID-KANSAS ENGINEERING CONSULTANTS, INC.
411 N WEBB ROAD
WICHITA, KS. 67206
316-684-9600

<p>DCH DESIGN BY:</p> <p>APRIL 1998 DATE</p>	<p>GJR DRAWN BY:</p> <p>92010 JOB NO.</p>	<p>DCH CHECKED BY:</p> <p>LS 908 SHEET OF</p>
--	---	---

6: CIVIL\3210\BASE2A.DWG Tue May 11 15:31:10 1998