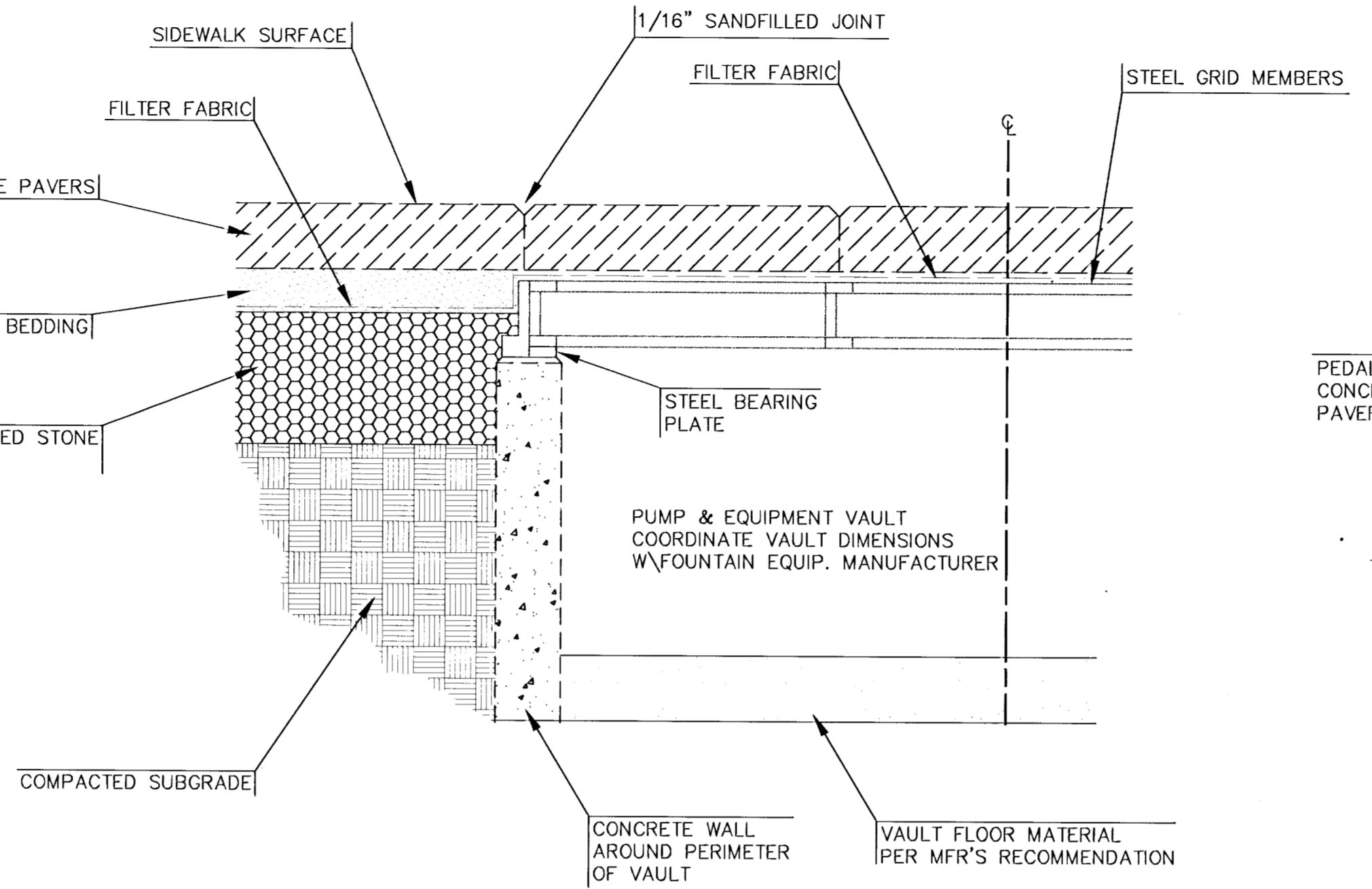


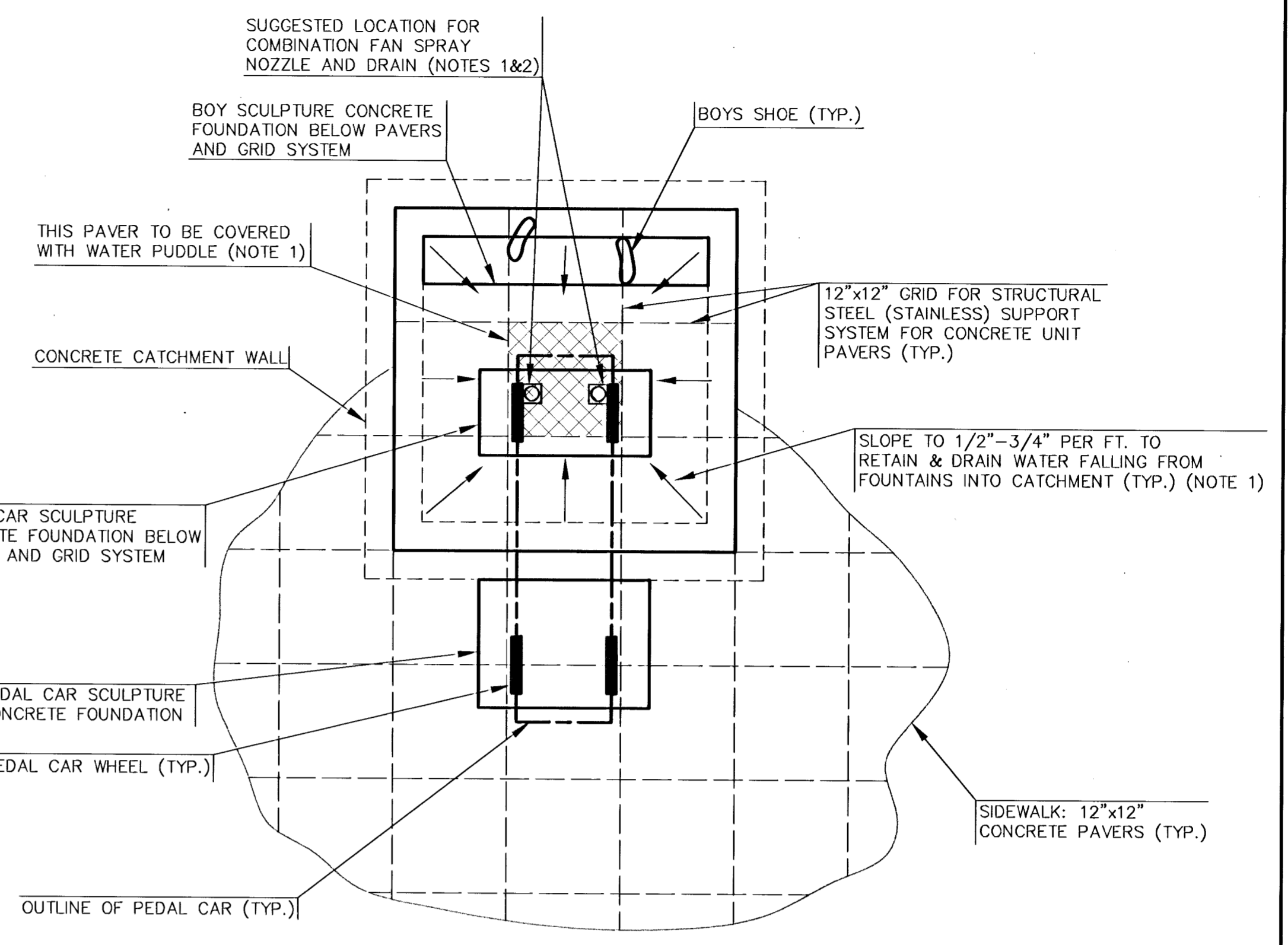
LEARNING FOUNTAIN - PLAN

- NOTES:
- INTERNAL PLUMBING IS BUILT WITH THE BOY SCULPTURE, AND WILL BE DELIVERED TO THE CONTRACTOR WITH A 1/2" SOFT COPPER PIPE PROTRUDING OUT THE BOTTOM OF ONE FOOT. THERE ARE NO EXTERNAL NOZZLES REQUIRED FOR THIS DISPLAY.
 - SEE SPECIFICATIONS FOR DESCRIPTION OF FOUNTAIN CONCEPT.
 - SEE FOUNTAIN CATCHMENT DETAIL FOR A SIMILAR CROSS SECTION VIEW.



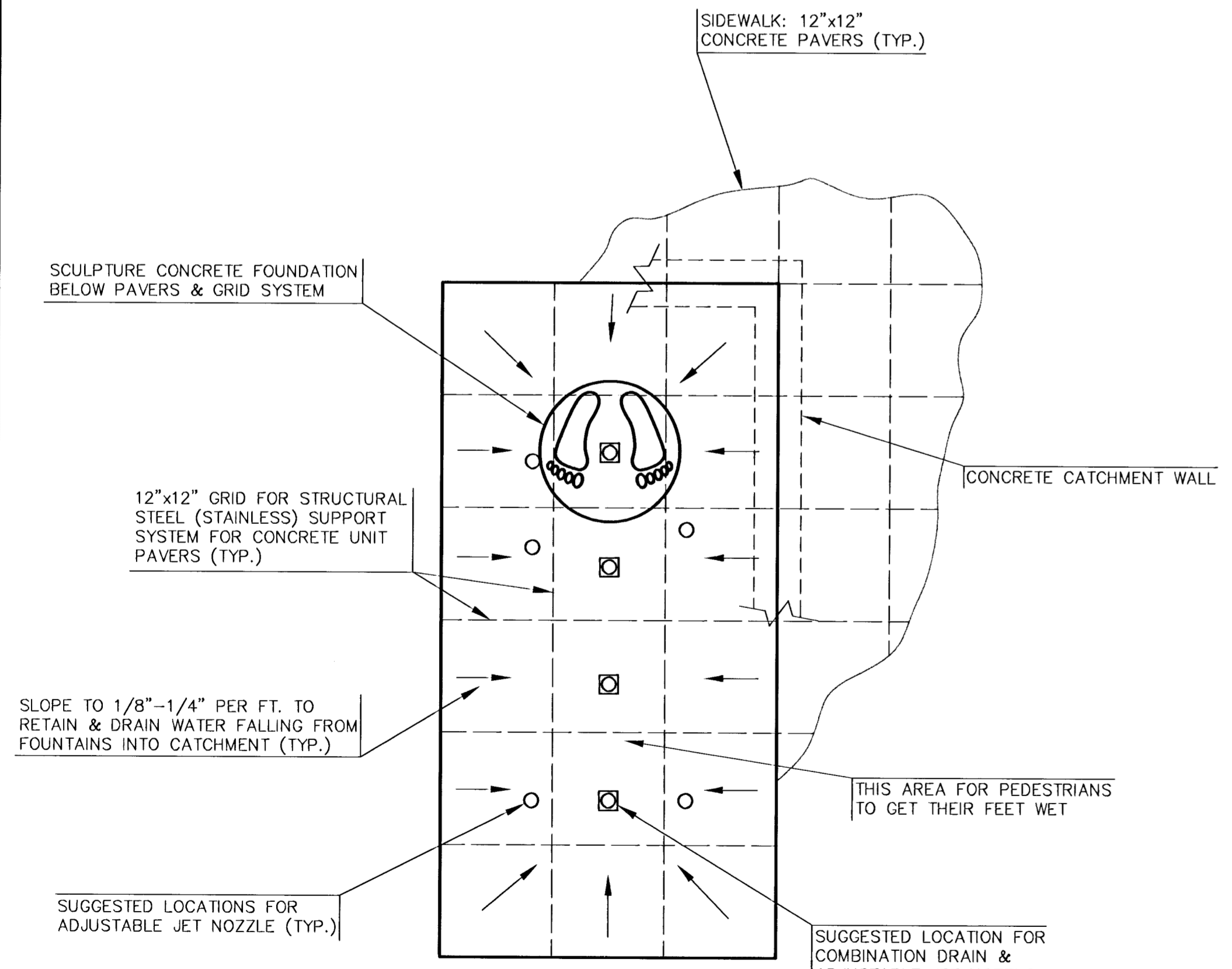
VAULT ACCESS COVER DETAIL

- NOTES:
- ALL STRUCTURAL STEEL, BOLTS AND FASTENERS SHALL BE STAINLESS STEEL, TYPE 304, OR APPROVED EQUAL.
 - DESIGN COMPUTATIONS AND SHOP DRAWINGS SHALL BE SUBMITTED PER SPECIFICATIONS.
 - FILTER FABRIC ABOVE VAULT SHALL HAVE A VERTICAL WATER FLOW RATE OF 90 GPM MINIMUM.



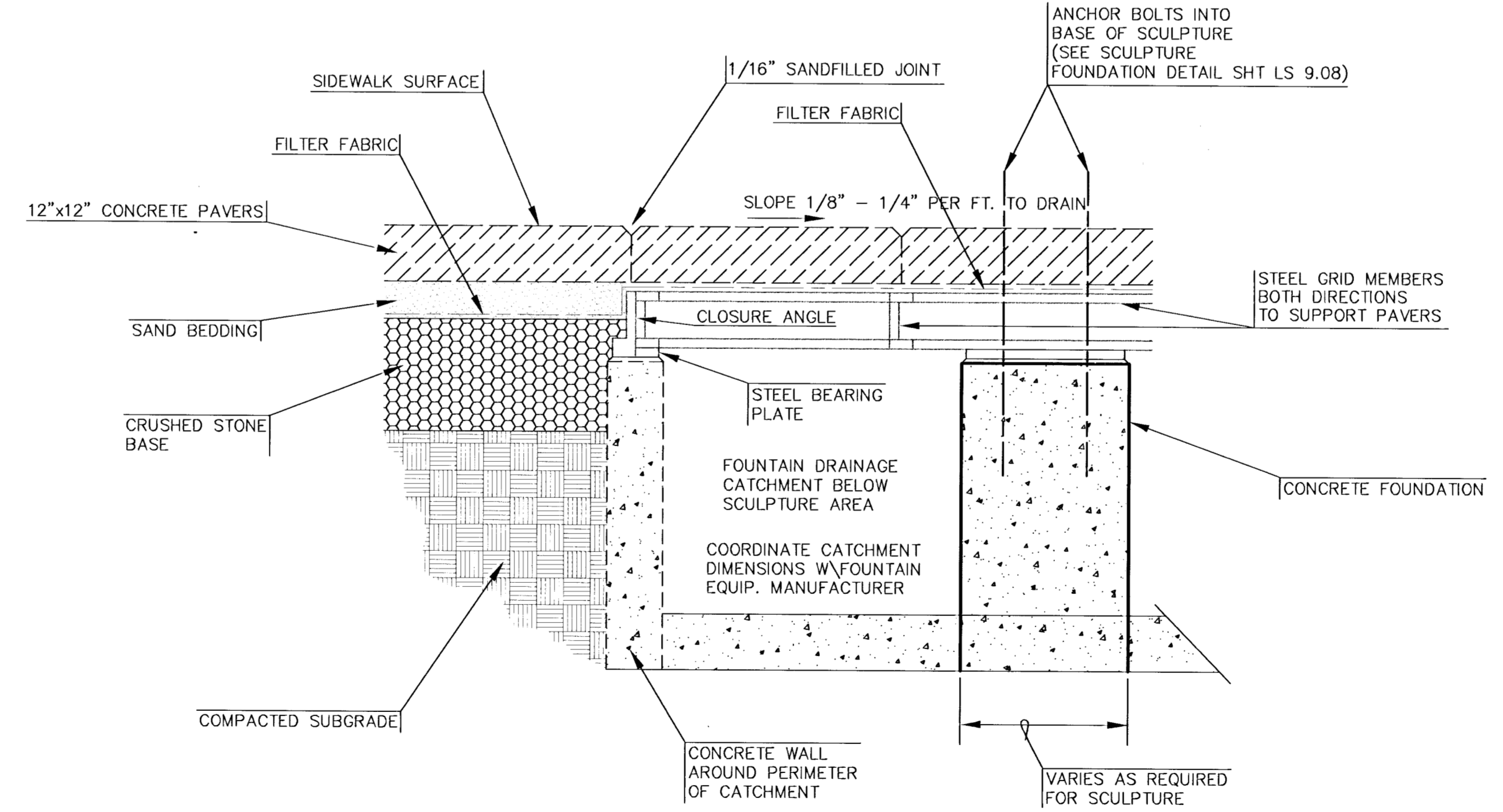
PEDAL CAR - PLAN

- NOTES:
- DRAIN TO BE DESIGNED AND INSTALLED TO CREATE AN APPROXIMATELY 1/8"-1/4" DEEP PUDDLE CONTAINED IN 12"x12" PAVES AREA.
 - SEE SPECIFICATIONS FOR DESCRIPTION OF FOUNTAIN CONCEPT.
 - SEE FOUNTAIN CATCHMENT DETAIL FOR A SIMILAR CROSS SECTION VIEW.



BUSINESSMAN - PLAN

- NOTES:
- SEE SPECIFICATIONS FOR DESCRIPTION OF FOUNTAIN CONCEPT.
 - SEE FOUNTAIN CATCHMENT DETAIL FOR A SIMILAR CROSS SECTION VIEW.

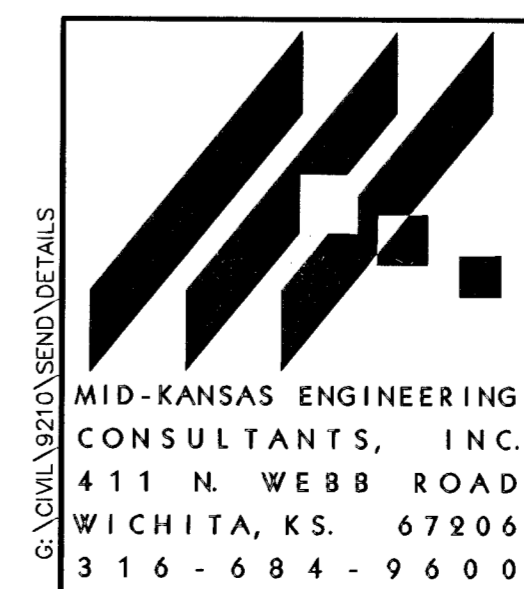


FOUNTAIN CATCHMENT DETAIL
TYPICAL FOR SCULPTURES WITH FOUNTAINS

- NOTES:
- ALL STRUCTURAL STEEL, BOLTS AND FASTENERS SHALL BE STAINLESS STEEL, TYPE 304, OR APPROVED EQUAL.
 - DESIGN COMPUTATIONS AND SHOP DRAWINGS SHALL BE SUBMITTED PER SPECIFICATIONS.
 - FILTER FABRIC ABOVE CATCHMENT SHALL HAVE A VERTICAL WATER FLOW RATE OF 90 GPM MINIMUM.

GENERAL NOTES:

- Fountain Details are provided for information only. Complete structural computations and shop drawings shall be submitted per specifications.
- Coordinate with requirements for paving, sculpture and fountain equipment installations.
- Coordinate location of vault with City Park and Recreation Dept.



STREETSCAPES
PROJECT NAME

FOUNTAIN DETAILS
SHEET TITLE

MID-KANSAS ENGINEERING CONSULTANTS, INC.
411 N. WEBB ROAD
WICHITA, KS. 67206
316-684-9600

DESIGN BY: **DCH**
DRAWN BY: **GJR**
CHECKED BY: **DCH**

DATE: **MAY 1998**
JOB NO.: **DETAILS (92010)**
SHEET OF: **LS 909**