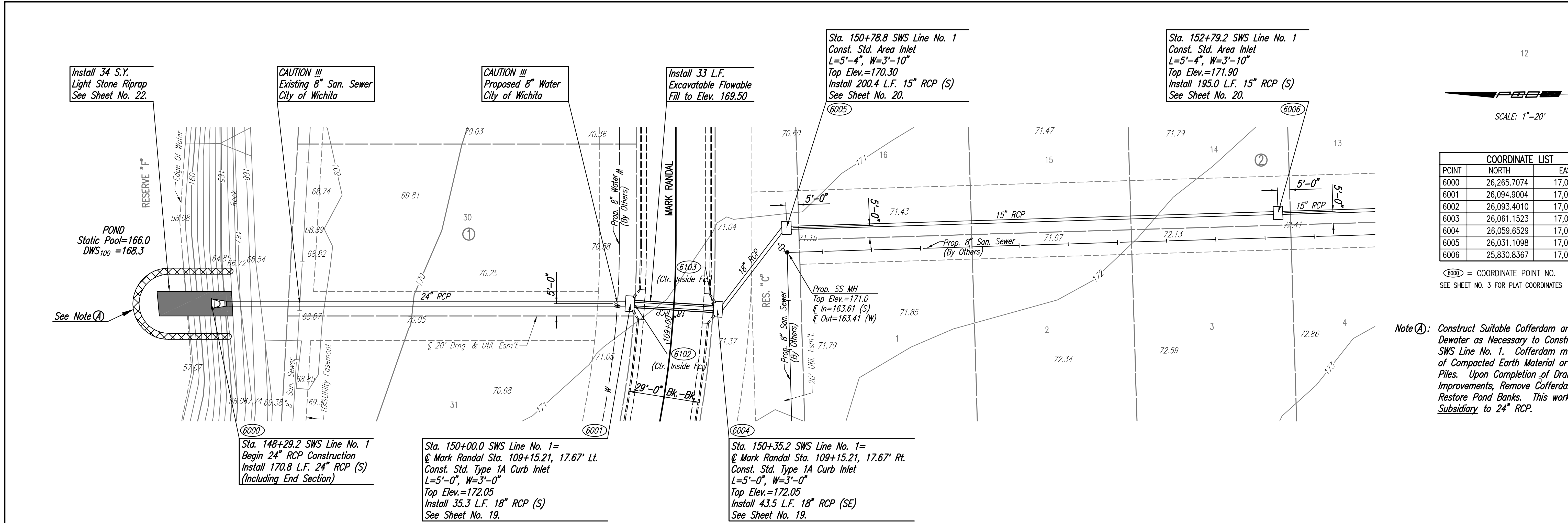


PLAN	CHECKED	DATE
	CHECKED	

PROFILE	CHECKED	DATE
	CHECKED	

S:\05-05-2007 6:45:06 AM by BJS
 Plot Scale 1:20 06-11-2007 10:06:59 AM by BEJ
 J:\SENTOU\2006\0611\2007-06-05 to Wichita\Street\DWG\17-SWS LINE NO 1

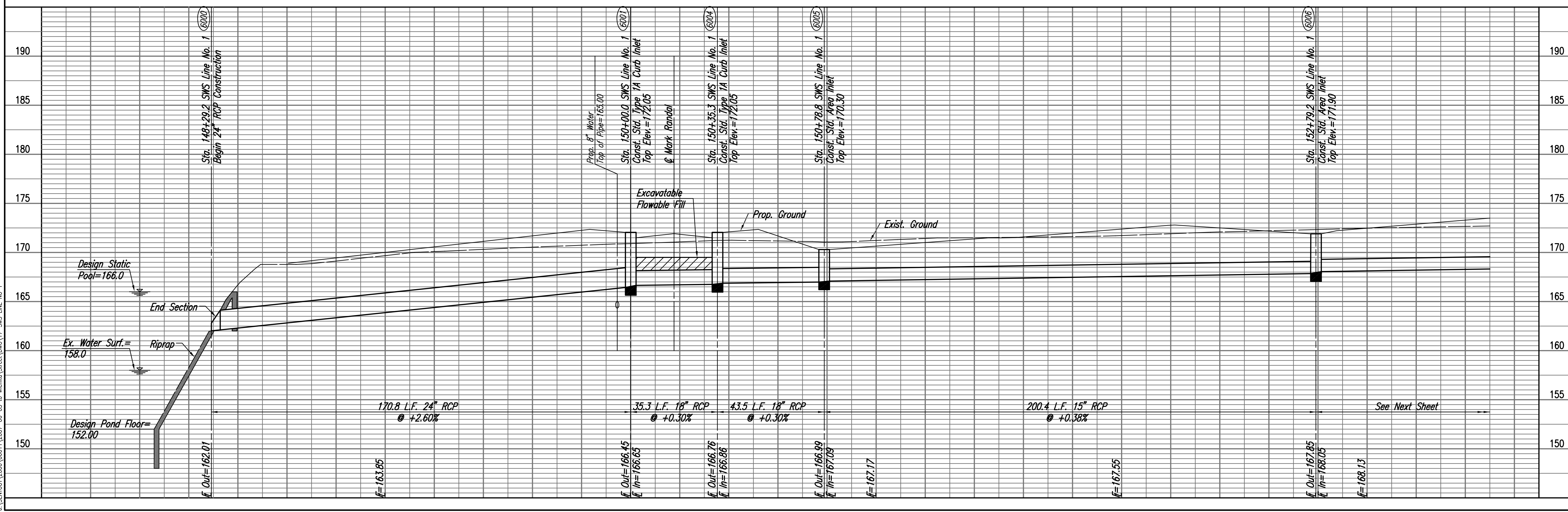


SCALE: 1"=20'

COORDINATE LIST		
POINT	NORTH	EAST
6000	26,265.7074	17,005.3259
6001	26,094.9004	17,003.6770
6002	26,093.4010	17,003.5683
6003	26,061.1523	17,001.2309
6004	26,059.6529	17,001.1222
6005	26,031.1098	17,033.9532
6006	25,830.8367	17,038.0858

(6000) = COORDINATE POINT NO.
 SEE SHEET NO. 3 FOR PLAT COORDINATES

Note (A): Construct Suitable Cofferdam and Dewater as Necessary to Construct SWS Line No. 1. Cofferdam may be of Compacted Earth Material or Sheet Piles. Upon Completion of Drainage Improvements, Remove Cofferdam and Restore Pond Banks. This work shall be Subsidiary to 24" RCP.



Professional Engineering Consultants, P.A.
 303 S. TOPEKA AVENUE, WICHITA, KANSAS 67202
 316-262-2291 • FAX 316-262-3063
 Designed By: EDB, BMM
 Drawn By: BJS, BMM
 Job No.: 35-06611-000
 Date: November 2006
 Sheet 17 of 58

JAMES L. ARMOUR, P.E.-CITY ENGINEER
 CITY OF WICHITA PROJECT NO. 472-94091