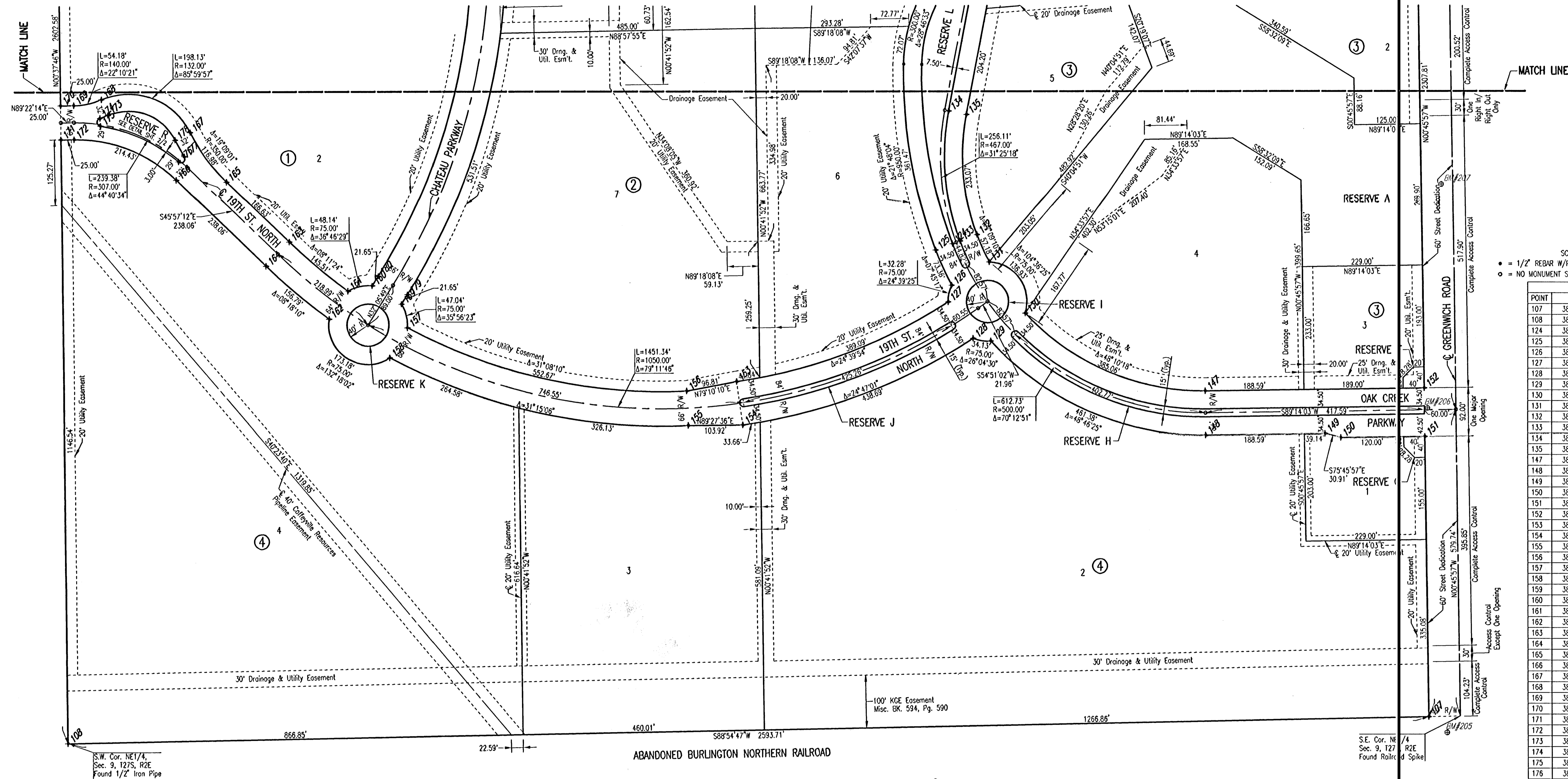


OAK CREEK

AN ADDITION TO WICHITA, SEDGWICK COUNTY, KANSAS

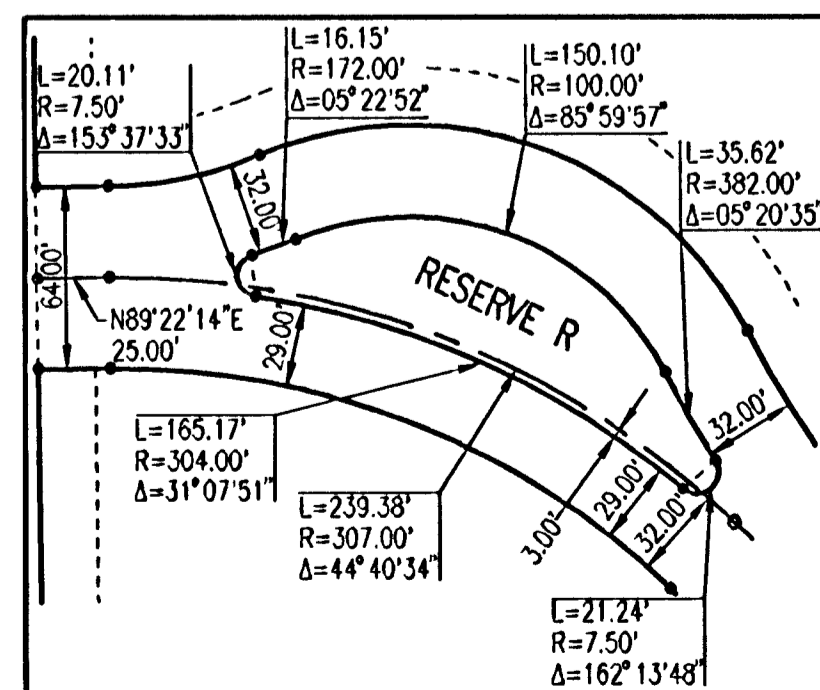


SCALE: 1" = 100'
 • = 1/2" REBAR W/PEC CAP UNLESS OTHERWISE NOTED
 ○ = NO MONUMENT SET

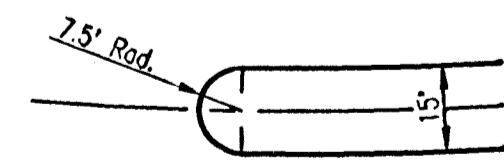
COORDINATE LIST

POINT	NORTH	EAST
107	384637.8588	2374056.3889
108	384588.6570	2371463.1420
124	385534.0985	2373149.2004
125	385521.9872	2373116.8961
126	385455.2479	2373147.2112
127	385423.9155	2373140.5759
128	385354.6162	2373188.0980
129	385349.6419	2373221.5686
130	385402.2814	2373287.2380
131	385499.3278	2373218.9075
132	385551.4755	2373195.5500
133	385539.3642	2373163.2457
134	385787.3250	2373142.2457
135	385780.8190	2373176.1267
147	385254.2983	2373630.5230
148	385170.3058	2373631.6458
149	385173.3498	2373859.3571
150	385165.7496	2373889.3177
151	385167.8883	2374049.3034
152	385259.8801	2374048.0737
153	385272.6760	2372737.4282
154	385189.5413	2372749.4518
155	385188.5620	2372645.5345
156	385254.4847	2372642.3402
157	385375.3698	2372110.0021
158	385318.3324	2372076.7271
159	385420.3058	2372098.9404
160	385455.3751	2372043.0285
161	385445.2194	2371998.8154
162	385392.1009	2371961.0565
163	385538.5800	2371885.3616
164	385492.5784	2371840.8660
165	385654.4253	2371765.5952
166	385658.0857	2371669.7568
167	385748.1728	2371696.5335
168	385810.3348	2371527.5589
169	385793.4021	2371474.8401
170	385799.1275	2371449.8417
171	385735.1313	2371450.5448
172	385735.4060	2371475.5435
173	385780.8357	2371539.9604
174	385775.2832	2371524.7972
175	385760.7186	2371525.8754
176	385693.0134	2371674.3133
177	385702.7423	2371685.4929
178	385733.7433	2371667.9716
179	385438.6497	2372110.4461
180	385473.7190	2372054.5342

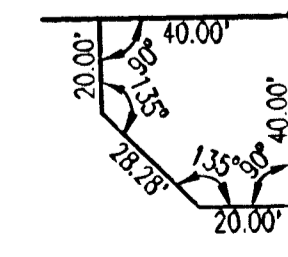
× 1000 = COORDINATE POINT NO.



RESERVE R DETAIL

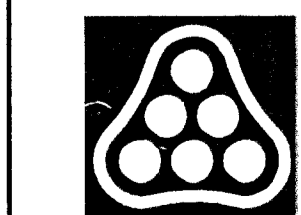


TYPICAL MEDIAN RESERVE DETAIL



TYPICAL ENTRY MONUMENT RESERVE DETAIL

Saved: 05-24-2006 8:24:02 AM by BLS
 Plot Scale: 1:100 05-01-2006 6:19:55 AM by BLS
 C:\2004\04688\03\04688-C-04cnew.dwg



No.	Revision	By	Date
OAK CREEK-PHASE 1 21ST ST. N. DECEL LANE PLAT JAMES L. ARMOUR, P.E. - CITY ENGINEER CITY OF WICHITA PROJECT NO. 472-84206 Professional Engineering Consultants, P.A. 303 S. TOPEKA • WICHITA, KANSAS 67202 316-262-2691 • FAX 316-262-3003			
Designed by	BDB, BLB	Job No.	35-04688-003
Drawn by	JTS	Date	January 2005
			Sheet 3 of 28