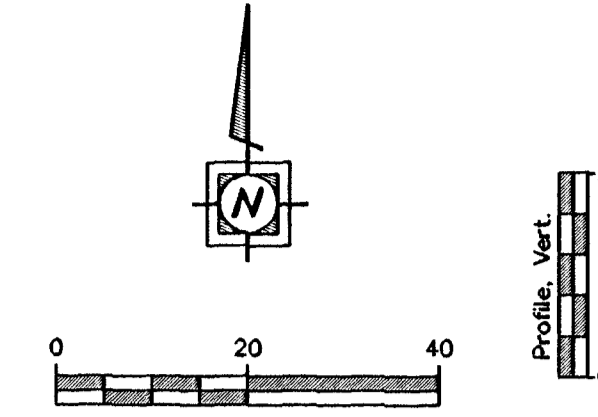
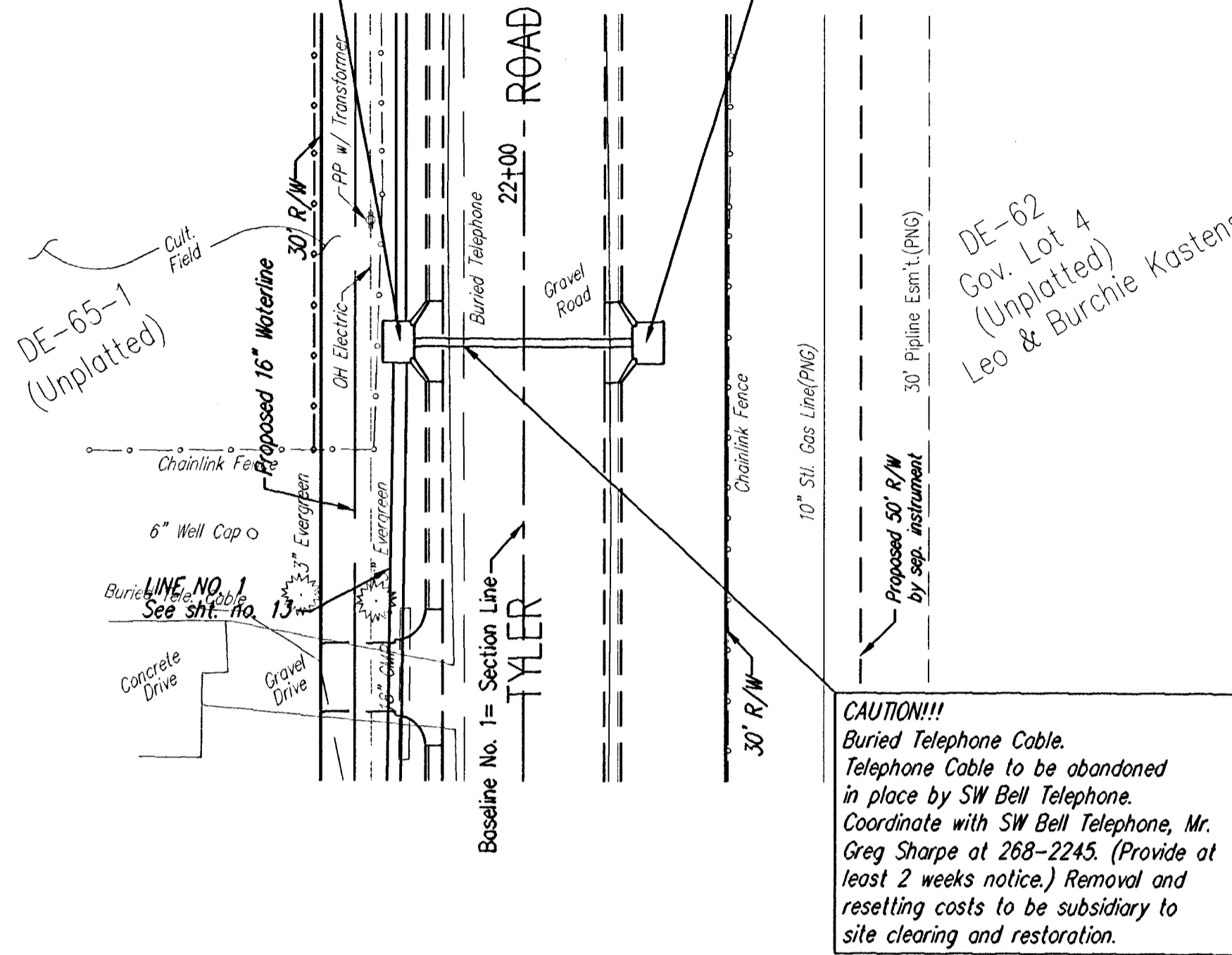
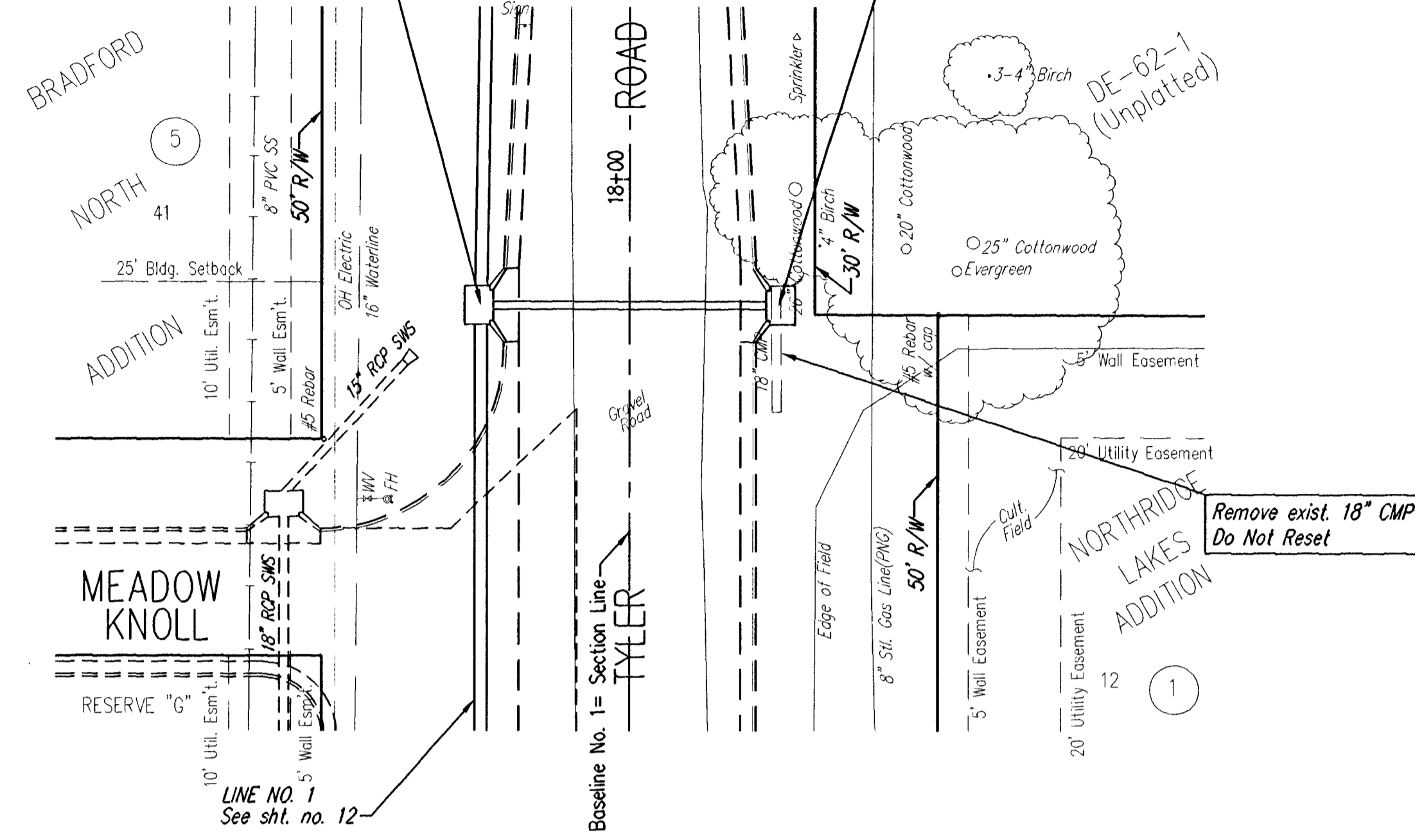


BL NO. 1, Sta. 17+79.50=
Sta. 0+00.00, LINE NO. 2=
Sta. 1+42.88, LINE NO. 1, Inlet 1-1
Std. Type 1A Curb Inlet

BL NO. 1, Sta. 17+79.50=
Sta. 0+39.38, LINE NO. 2
Const. Std. Type 1A Curb Inlet, 2-1
L=6'-4", W=5'-4"
Top Elev.= 170.70

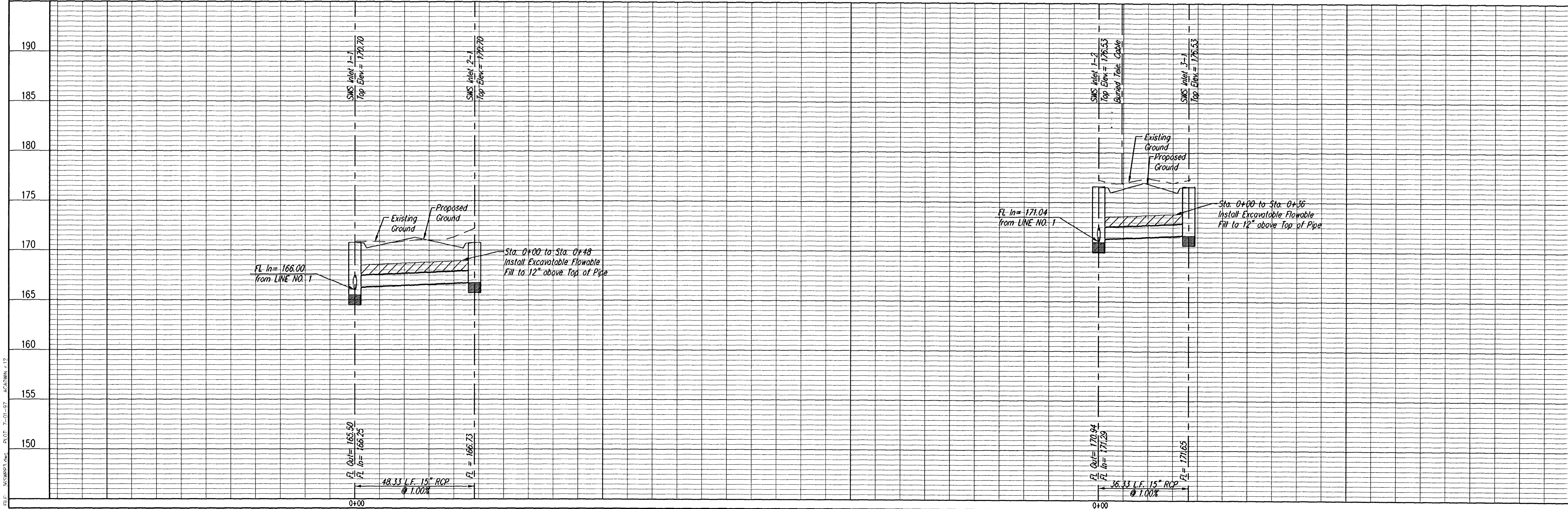
BL NO. 1, Sta. 21+74.99=
Sta. 0+00.00, LINE NO. 3=
Sta. 5+38.50, LINE NO. 1, Inlet 1-2
Std. Type 1A Curb Inlet

BL NO. 1, Sta. 21+74.99=
Sta. 0+36.33, LINE NO. 3
Const. Std. Type 1A Curb Inlet, 3-1
L=6'-4", W=5'-4"
Top Elev.= 176.53



STORM SEWER LINE NO. 2

STORM SEWER LINE NO. 3



City of Wichita
Sedgewick County, Kansas

STORM SEWER LINE NO. 2 & 3
(SWS No. 2 Sta. 0+00.00 to SWS Sta. 0+42.18)
(SWS No. 3 Sta. 0+00.00 to SWS Sta. 0+36.33)
Plan and Profile

Tyler Road from 25th Street North to 1/4 mile South
Street and Storm Drainage Improvements

100 South Central
Davenport, Kansas 67032
Phone: (316) 788-4408
Fax: (316) 788-4408

YOUNG & ASSOCIATES, P.A.
Civil and Environmental Engineers

Project No.: 96-036-002
Date: February 1997

Eng.: C.F. Young
Tech.: J.L. Murphy

Sheet No. 14 of 27