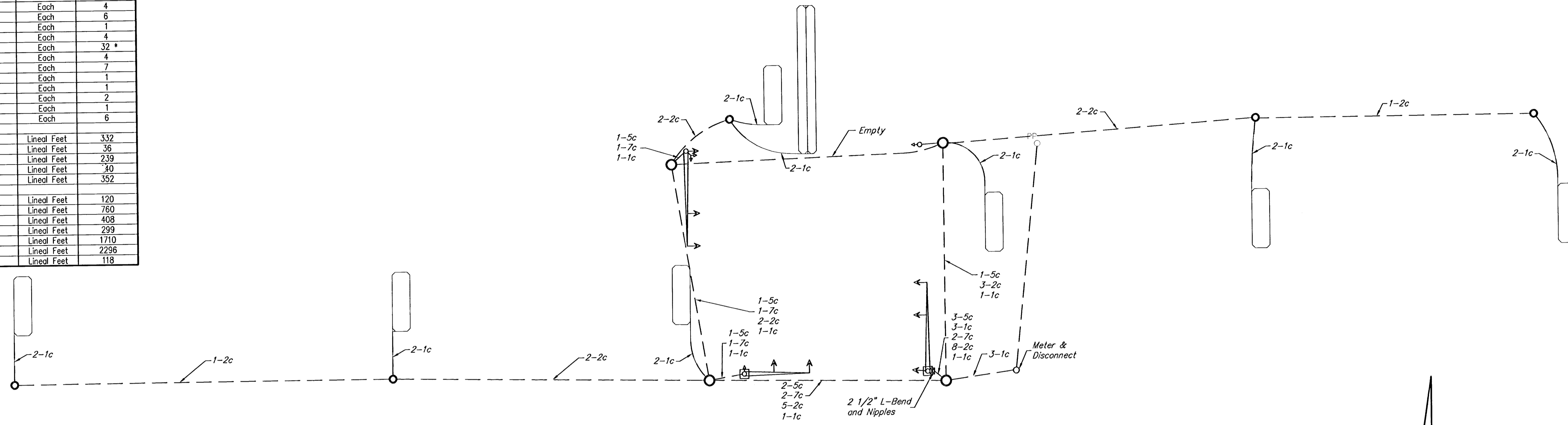


**BILL OF MATERIALS**

ITEM	UNIT	QUANTITY
Model 170E Controller System	Each	1
Traffic Signal Pedestal	Each	1
Traffic Signal Pole	Each	2 **
Traffic Signal Pole (Joint Use)	Each	1 **
Most Arm	Each	3 **
Concrete Base for Traffic Signal Pole/Pedestal (15' Pedestal)	Each	4
Traffic Signal Head (Type A)	Each	8
Traffic Signal Head (Type K)	Each	4
Mounting Bracket (Type I)	Each	6
Mounting Bracket (Type II)	Each	1
Mounting Bracket (Type III)	Each	4
Traffic Signal Lamp	Each	32 *
Pedestrian Push Button (One piece with sign)	Each	4
Ground Rod and Clamp	Each	7
Meter Enclosure (Meter by K.G.&E.)	Each	1
Power Disconnect	Each	1
Service Box	Each	2
Junction Box	Each	1
Backplates	Each	6
3" Conduit (Rigid Galvanized Conduit)	Lineal Feet	332
2" Conduit (Rigid Galvanized Conduit)	Lineal Feet	36
1 1/4" Conduit (Rigid Galvanized Conduit)	Lineal Feet	239
1" Conduit (Rigid Galvanized Conduit)	Lineal Feet	40
3/4" Conduit (Rigid Galvanized Conduit)	Lineal Feet	352
Multi Conductor Cable 2C #14 AWG	Lineal Feet	120
Multi Conductor Cable 5C #14 AWG	Lineal Feet	760
Multi Conductor Cable 7C #14 AWG	Lineal Feet	408
Ground Wire (Type THHN Stranded) #8 AWG	Lineal Feet	299
Shielded Loop Feeder Cable 2C #14 AWG	Lineal Feet	1710
Loop Detector Wire (Type THHN) #14 AWG	Lineal Feet	2296
Power Lead-in Wire (Type USE) #6 AWG	Lineal Feet	118

\* TRAFFIC SIGNAL LAMPS SHALL BE 130 VOLT, 8000 HOUR RATING  
 \*\* PROVIDED BY CITY OF WICHITA. CONTACT JIM PARKS 268-4033.



**CONDUCTOR RUNS  
47TH ST. S. AND PALISADE**

**WIRING NOTES:**

EACH SEPARATE MOST ARM MOUNTED SIGNAL HEAD SHALL HAVE ONE CONTINUOUS RUN OF MULTI CONDUCTOR FROM THE POLE BASE TO THE SIGNAL HEAD. A ONE-CONDUCTOR #8 AWG (GREEN) SHALL BE INSTALLED TO CONNECT ALL GROUNDING LUGS IN POLE BASES AND CONTROLLER BASE.

THE CONTRACTOR SHALL FURNISH AND INSTALL ALL LOOP WIRE, SHIELDED LOOP LEAD-IN WIRE, POWER SUPPLY CABLE, AND TRAFFIC SIGNAL CABLE FOR THE COMPLETE OPERATION OF THE TRAFFIC SIGNAL. THE STREET LIGHT WIRING SHALL BE INSTALLED BY OTHERS.

ONE, FIVE-CONDUCTOR CABLE SHALL BE RUN FROM THE CONTROLLER TO EACH SIGNAL POLE FOR EACH PEDESTRIAN MOVEMENT. THE FOLLOWING COLOR CODE SHALL BE USED:

BLACK	PUSHBUTTON
WHITE	COMMON SIGNAL
RED	DON'T WALK
GREEN	WALK
ORANGE	COMMON PUSHBUTTON

ONE, FIVE-CONDUCTOR CABLE SHALL BE RUN FROM THE CONTROLLER TO EACH SIGNAL POLE FOR THE THROUGH MOVEMENT INDICATORS. THE FOLLOWING COLOR CODE SHALL BE USED:

BLACK	STREET NAME SIGN WHERE APPLICABLE
WHITE	COMMON
RED	RED BALL
GREEN	GREEN BALL
ORANGE	YELLOW BALL

ONE, SEVEN-CONDUCTOR CABLE SHALL BE RUN FROM THE CONTROLLER TO EACH SIGNAL POLE SUPPORTING A LEFT TURN SIGNAL. THE FOLLOWING COLOR CODE SHALL BE USED:

BLACK	YELLOW ARROW
WHITE	COMMON
RED	RED BALL
GREEN	GREEN BALL
ORANGE	YELLOW BALL
BLUE	GREEN ARROW
WHITE W/BLACK TRACER	STREET NAME SIGN WHERE APPLICABLE

EACH FIVE SECTION SIGNAL HEAD SHALL HAVE ONE CONTINUOUS RUN OF FIVE-CONDUCTOR CABLE FROM THE POLE BASE TO THE TERMINAL BLOCK WITHIN THE HEAD. THE FOLLOWING COLOR CODE SHALL BE USED:

BLACK	YELLOW ARROW
WHITE	COMMON
RED	RED BALL
GREEN	GREEN BALL
ORANGE	YELLOW BALL
BLUE	GREEN ARROW
WHITE W/BLACK TRACER	STREET NAME SIGN WHERE APPLICABLE

EACH TWO SECTION SIGNAL HEAD SHALL HAVE ONE CONTINUOUS RUN OF FIVE-CONDUCTOR CABLE FROM THE POLE BASE TO THE TERMINAL BLOCK WITHIN THE HEAD. THE FOLLOWING COLOR CODE SHALL BE USED:

BLACK	WALK
WHITE	COMMON
RED	DON'T WALK

EACH PEDESTRIAN PUSHBUTTON SHALL HAVE ONE CONTINUOUS RUN OF TWO-CONDUCTOR CABLE FROM THE BASE OF THE SIGNAL POLE TO THE PUSHBUTTON. THE FOLLOWING COLOR CODE SHALL BE USED:

BLACK	PUSHBUTTON
WHITE	COMMON

**THE CONTROLLER AND CABINET SHALL INCLUDE THE FOLLOWING:**

- MODEL 170E CONTROLLER UNIT WITH WAJKS (53A OR LATEST REVISION) TRAFFIC PROGRAM ON 412B2 SYSTEM - MEMORY MODULE AND MODEL 400 MODEM.
- ONE MODEL 336 CABINET (MEETING CITY OF WICHITA SPECIFICATIONS) COMPLETE WITH ALL ACCESSORIES INCLUDING 1 - MODEL 210PC CONFLICT MONITOR (ECL OR MS).
- 3 - MODEL 242 TWO CHANNEL ISOLATORS
- 2 - MODEL 200 SWITCH PACKS
- 5 - MODEL CB22 TWO CHANNEL LOOP DETECTOR UNITS
- 4 - MODEL 430 TRANSFER RELAYS
- 2 - MODEL 204 FLASHER UNITS

THE CONTRACTOR SHALL BE RESPONSIBLE FOR FURNISHING AND INSTALLING THE CONTROLLER, CABINET AND SOFTWARE AND FOR ALL EQUIPMENT NECESSARY FOR THE COMPLETE AND SATISFACTORY OPERATION OF THE TRAFFIC SIGNAL, WHETHER OR NOT SAID EQUIPMENT IS SPECIFICALLY MENTIONED.

<b>47TH ST. S. &amp; PALISADE SIGNAL WIRING &amp; NOTES WICHITA, KANSAS</b>			
		924 NORTH MAIN WICHITA KANSAS 67203 316-264-8008 FAX 264-4621 http://www.srb1.com E-mail: srb@srb1.com	
<b>SAVOY, RUGGLES &amp; BOHM, P. A. ENGINEERING &amp; SURVEYING</b>			
PROJECT NUMBER <b>472-83261</b>			
DESIGN TCR	DRAWN JTS	UTILITY REVIEW	DATE Dec. 7, 2000
		REVISD Jan. 10, 2001	
SHEET <b>3</b>			OF <b>10</b>