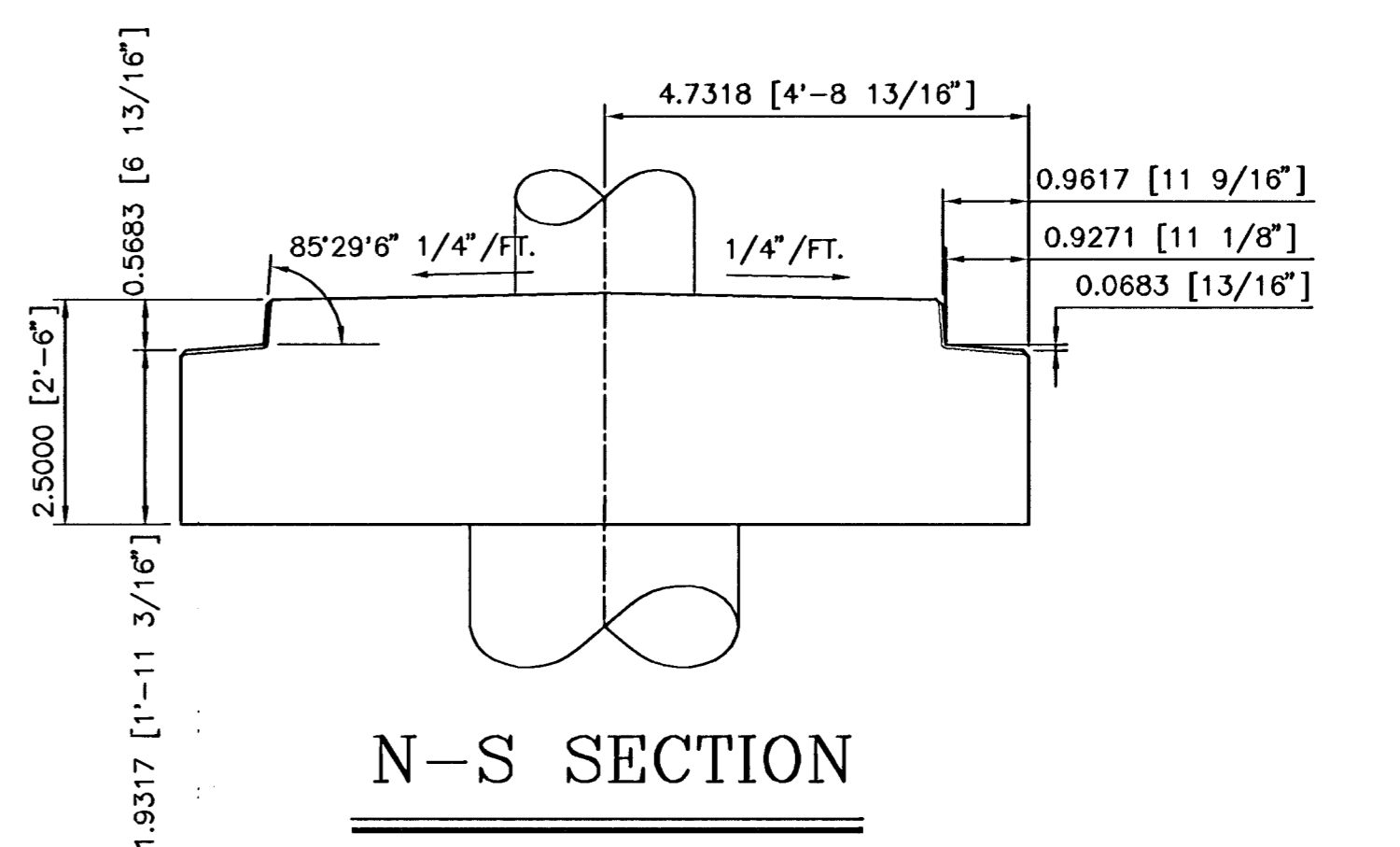
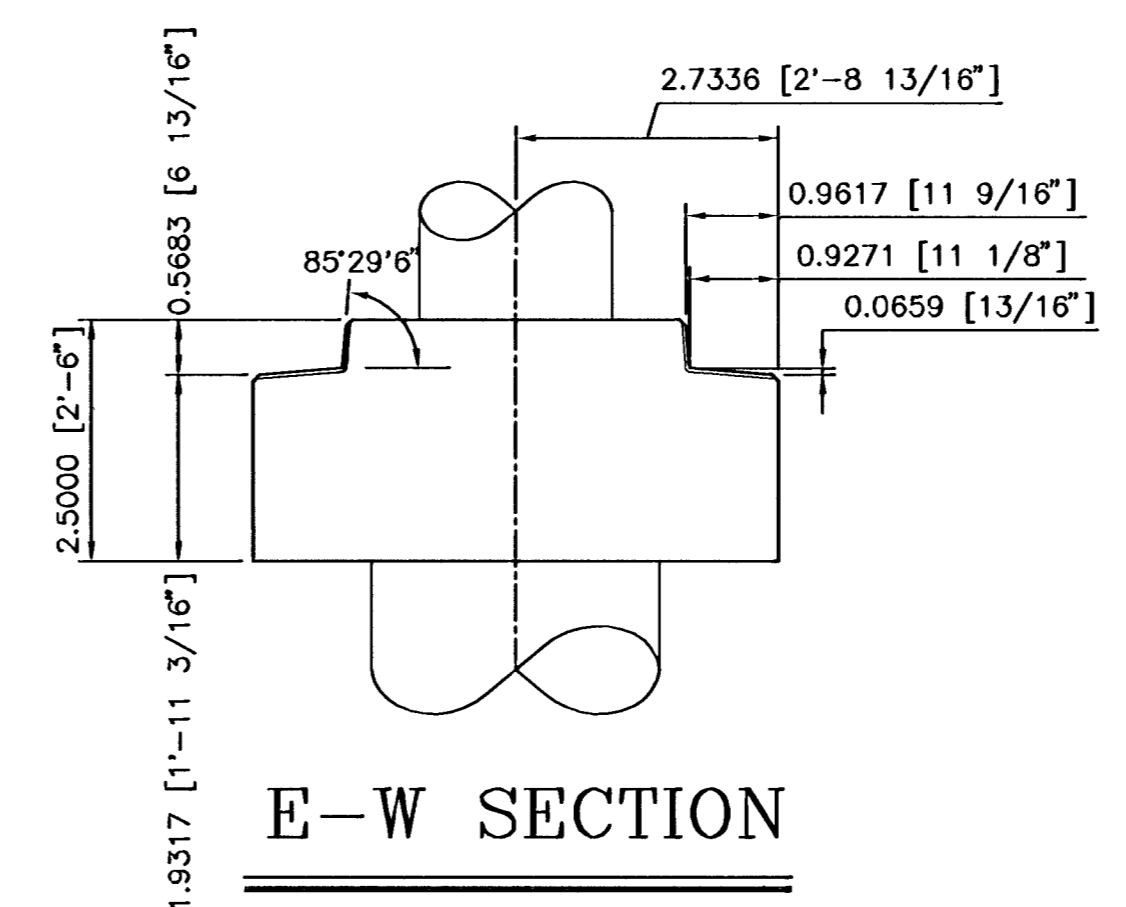
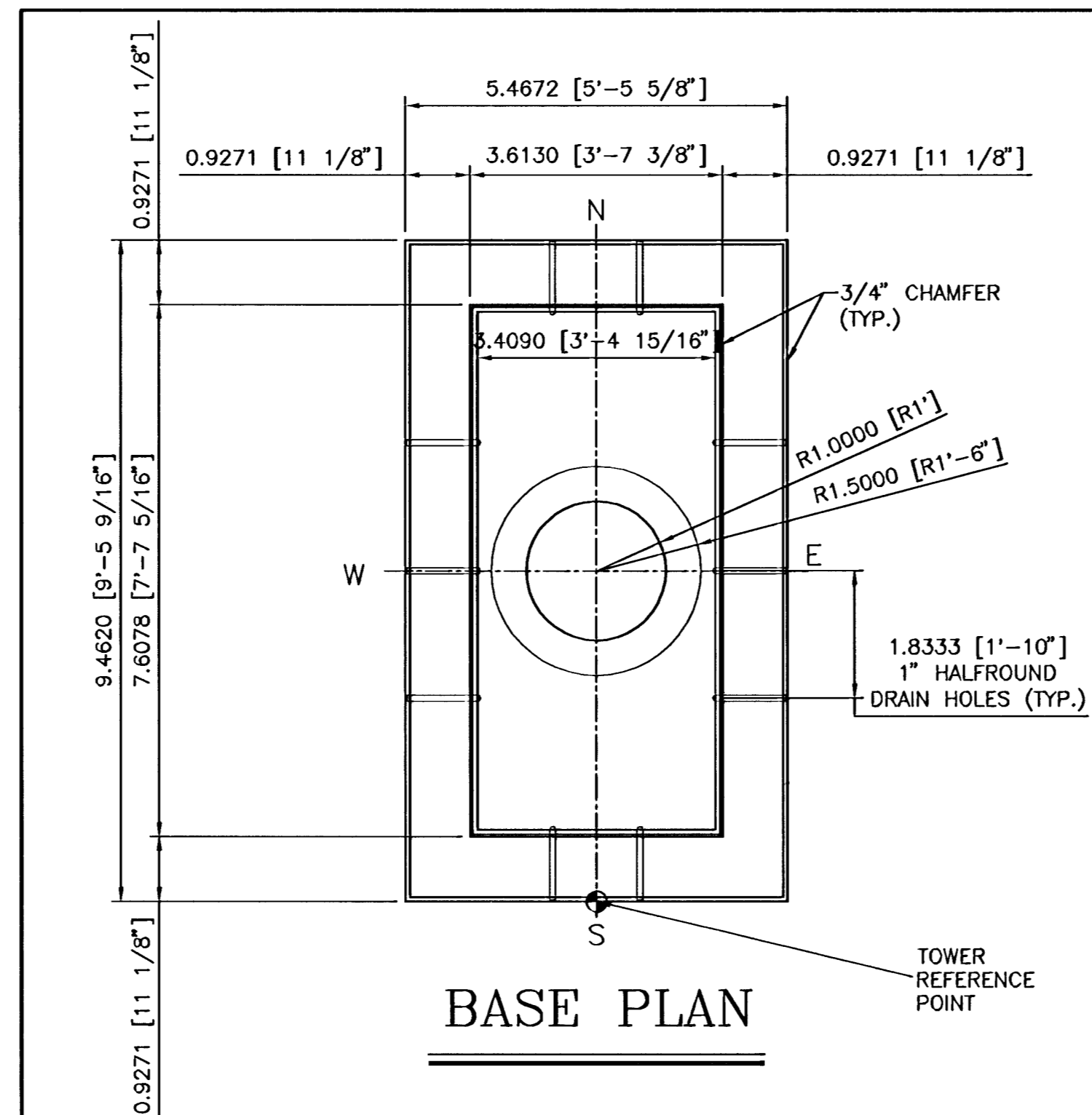


SCALE: 1/4" = 1'



NOTE:
 1. SEE TOWER #3 & #4 REINFORCING DETAILS SHEET FOR REINFORCING LAYOUT.
 2. DIMENSIONS SHOWN REFERENCE THE WORKING POINTS SHOWN ON THE MISC. DETAIL SHEET.

TOWER BASE DETAIL
 SCALE: 1/2" = 1'

MKEC
 ENGINEERING CONSULTANTS
 411 N. WEBB ROAD
 WICHITA, KS. 67206
 316-984-9600

SENECA STREET
 PROJECT NAME

TOWER #4 (STA. 42+01.80 SENECA ST.)
 SHEET TITLE

KJS/RSB DESIGN BY: **RSB** DRAWN BY: **KJS** CHECKED BY:

NOVEMBER/2002 DATE: **98092** JOB NO.: **6 / 12** SHEET/OF