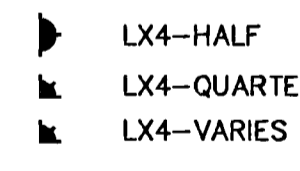


**IRRIGATION LEGEND**

IRRIGATION HEADS AND NOZZLES  
POP-UP HEADS (WEATHER MATIC OR APPROVED EQUAL)



NOZZLE SYMBOLS  
H = HALF  
Q = QUARTER  
V = ADJUSTABLE ARC

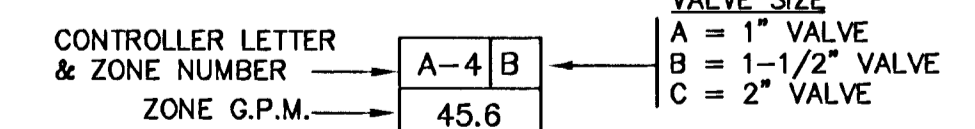
PIPE SIZE SYMBOLS  
A = 3/4"  
B = 1"  
C = 1-1/4"  
D = 1-1/2"  
E = 2"  
F = 2-1/2"

IRRIGATION EQUIPMENT

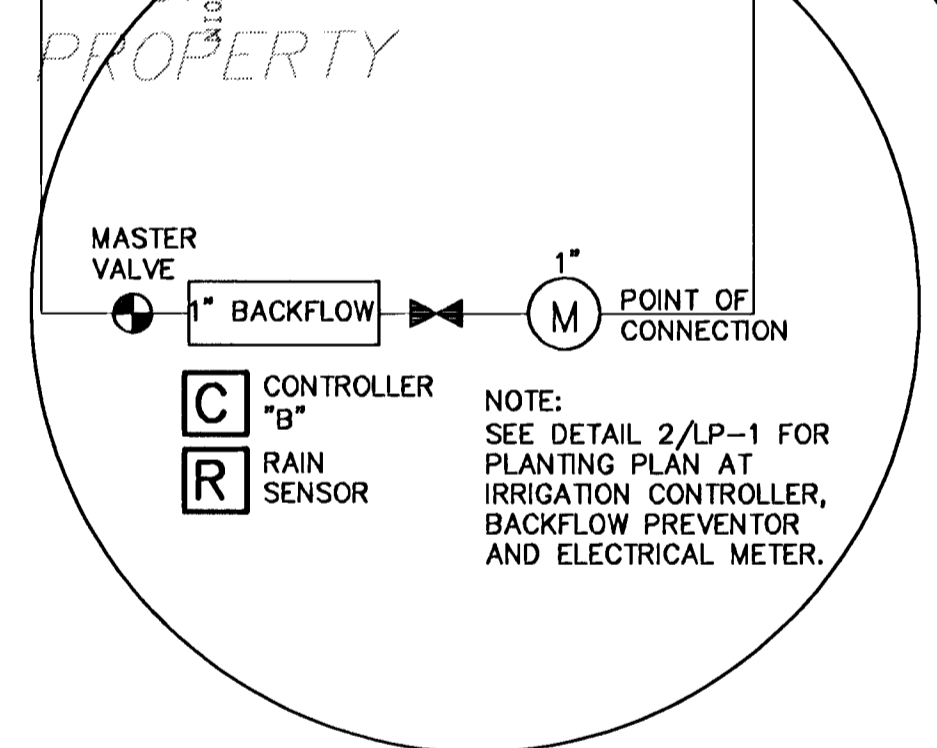
- WEATHERMATIC ELECTRIC VALVE MODEL 2100 WITH PRESSURE REGULATOR, OR APPROVED EQUAL.
- STEEL GATE VALVE, NON-RISING STEM, SIZE AS SHOWN OR PIPE SIZE
- WEATHERMATIC CONTROLLER MODEL RM7, 7 STATIONS, LMSP PEDESTAL MOUNT (OR APPROVED EQUAL) LOCATE WHERE DIRECTED BY THE OWNER'S REPRESENTATIVE - COORDINATE ELECTRICAL SUPPLY
- RAIN SENSOR - MINI-CLIK II OR APPROVED EQUAL. MOUNT RAIN SENSOR ON CONTROLLER PEDESTAL.

--- EXISTING 6" PVC SLEEVES OR NEW SLEEVE (AS INDICATED)

ZONE INFORMATION BOX



NOTE:  
LATERAL LINES ARE CLASS 200 PVC SOLVENT WELD PIPE.  
MAIN LINES ARE SCHEDULE 40 SOLVENT WELD PIPE.



NOTE:  
SEE DETAIL 2/P-1 FOR PLANTING PLAN AT IRRIGATION CONTROLLER, BACKFLOW PREVENTOR AND ELECTRICAL METER.

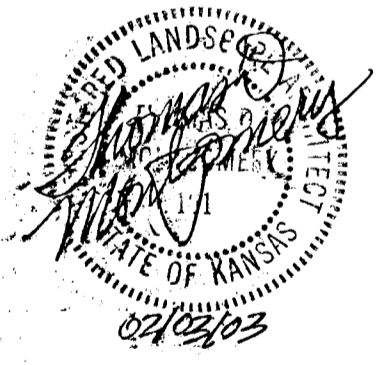
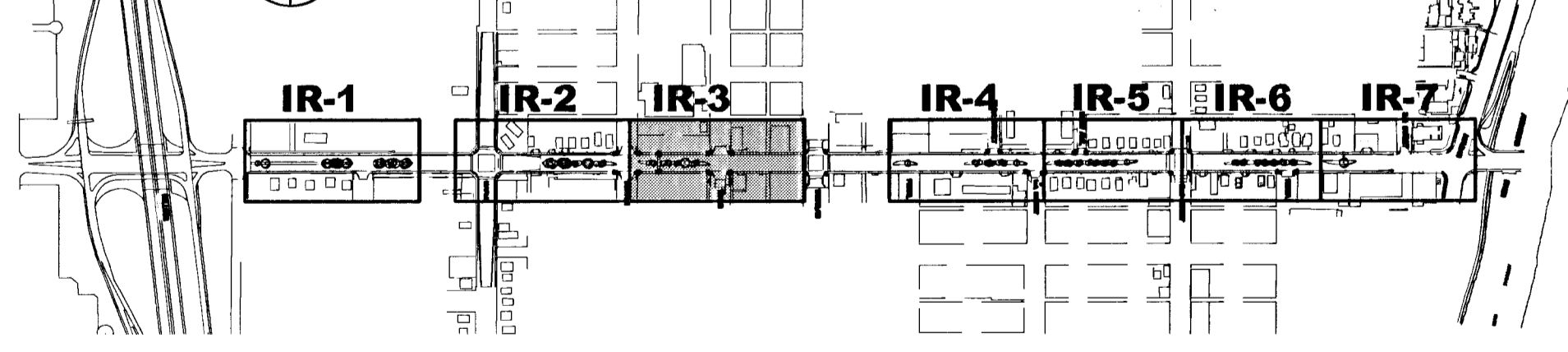
**A IRRIGATION PLAN NO. 3**



GENERAL NOTES:

1. REFERENCE THE CITY OF WICHITA STANDARD SPECIFICATIONS FOR IRRIGATION REQUIREMENTS.
2. IRRIGATION PLANS ARE DIAGRAMMATIC. EXACT PLACEMENT OF LINES AND EQUIPMENT TO BE COORDINATED WITH THE OWNER'S REPRESENTATIVE.
3. REFERENCE SHEET LI101 FOR IRRIGATION INSTALLATION DETAILS.

KEYMAP



**1 IRRIGATION LEGEND AND NOTES**

**MKEC**  
ENGINEERING CONSULTANTS  
411 N. WEBB ROAD  
WICHITA, KS. 67208  
316-684-9600

**SENECA STREET**  
PROJECT NAME

**IRRIGATION PLAN NO. 3**  
SHEET TITLE

DESIGN BY: **JDM**  
DATE: **02/03/03**

DRAWN BY: **LES**  
DRAWING NAME: **LI103**

CHECKED BY: **TDM**  
SHEET OF: **LI3 / 6**