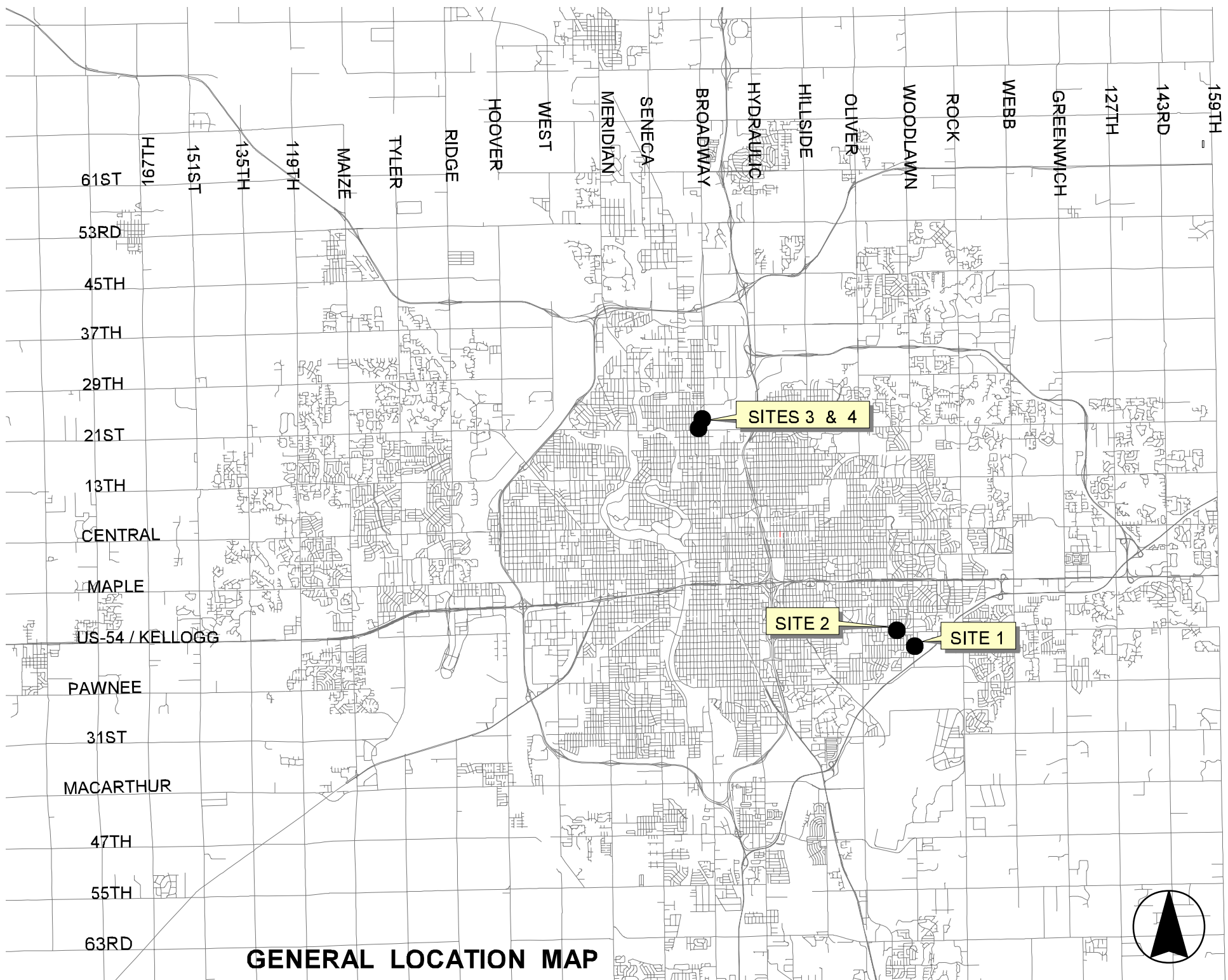


# 2007 SANITARY SEWER RECONSTRUCTION

## PHASE 7

**OCA # 620483 / 468-84378**  
( VARIOUS LOCATIONS )

SITE NO.	<u>GENERAL LOCATION</u>	<u>PIPE SIZE</u>	<u>UPSTREAM MANHOLE</u>	<u>DOWNSTREAM MANHOLE</u>	<u>UPSTREAM INVERT ELEVATION</u> (City Datum)	<u>DOWNSTREAM INVERT ELEVATION</u> (City Datum)	<u>LENGTH (FT.)</u>
1	Easement between Woodlawn and Mission, south of Harry Street	8" 8" 8"	5945-041 5945-040 5945-039	5945-016	Manhole Work Manhole Work Manhole Work & Point Repair		
2	Easements north of Harry and west of Waverly Street	8" 8" 8" 8"	5846-271E 5846-282CO 5846-271CO 5846-263	5846-267 5846-280 5846-280	Manhole Work Manhole Work Manhole Work Manhole Work		
3	Alley between Market & Broadway, from 22nd St. N. to 23rd St. N.	8" 8" 8"	5450-356 5450-354 5450-353	5450-354 5450-353 5450-002			210 203 250
4	Alley between Market & Park Place, from 21st St. North to north of 22nd St. North	8" 8" 8"	5450-272 5450-271 5450-269	5450-271 5450-270 5450-268	Service Connection Service Connection Service Connection & Manhole Work		
						Total linear feet =	663



**GENERAL LOCATION MAP**

## Bid Items by Site Reference

2007 Sanitary Sewer Reconstruction, Phase 7 (various locations)

<b>Bid Item</b>	<u>Site 1</u>	<u>Site 2</u>	<u>Site 3</u>	<u>Site 4</u>	<u>Totals</u>	
8" Pipe Removed & Replaced			663		663	lf
Point Repair	1				1	ls
Reconstruct Outside Drop	1				1	ea
Replace Service Connection				3	3	ea
Construct Manhole		3			3	ea
Reconstruct Manhole		1			1	ea
Replace Manhole Frame & Cover	5	2	3	1	11	ea
Remove & Replace Manhole Bench & Invert	1	1			2	ea
Pavement Removed & Replaced			665		665	lf
Soil Erosion BMPs					1	ls
Site Preparation & Restoration					1	ls